



BAHLEN / AUSTIN FOODS - PROPOSED SPECIALTY FOODS FACILITY
 MCGREGOR PARK - CARY, NORTH CAROLINA

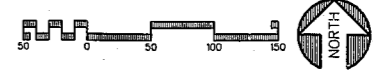
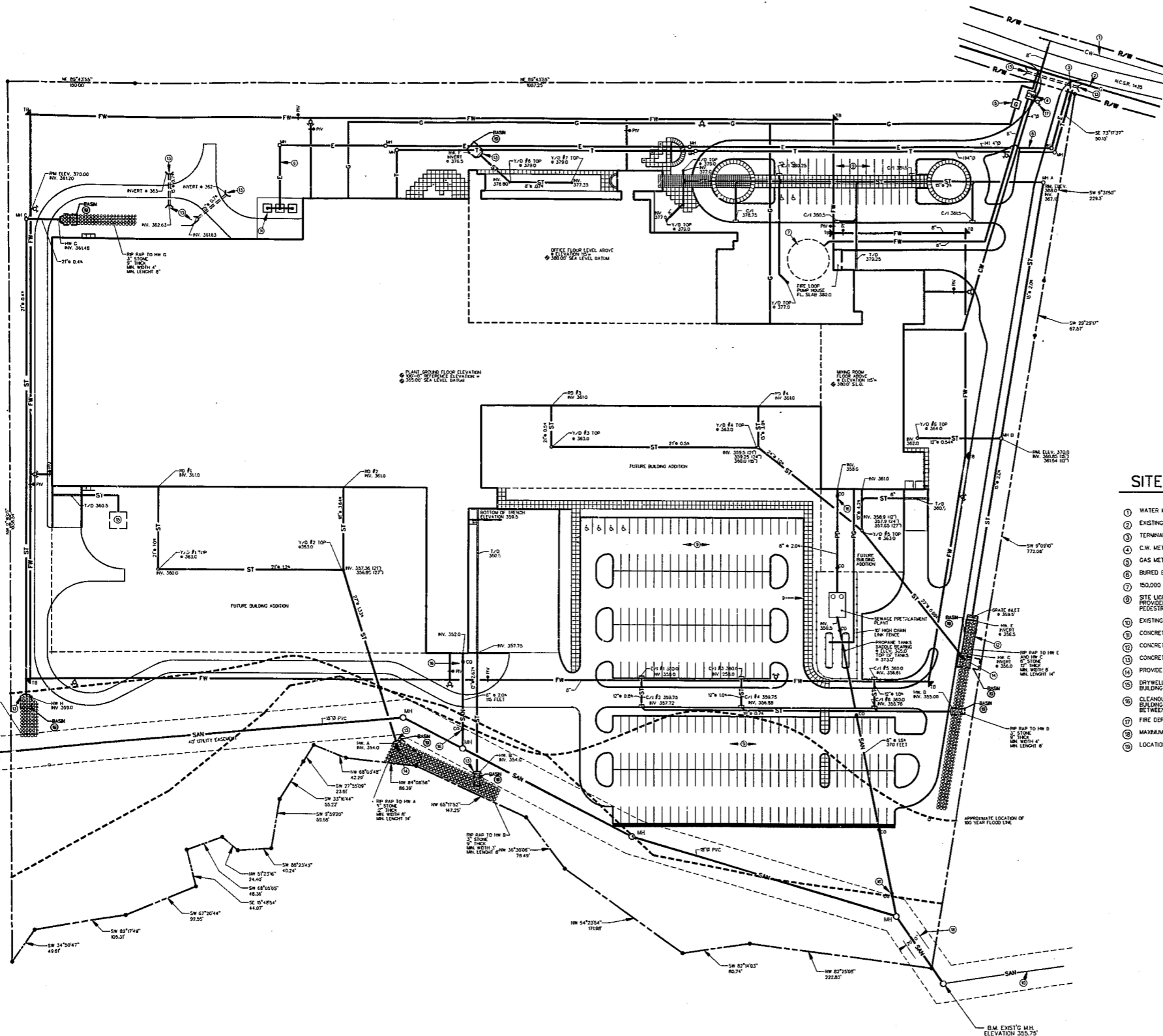
BEELGAN CORPORATION
 ARCHITECTS-ENGINEERS - (513) 881-0972
 10200 ANDERSON WAY, CINCINNATI, OHIO 45242

SITE UTILITIES LEGEND

- SAN — SANITARY SEWER
- ST — STORM WATER SEWER
- - - PST - PERFORATED SUBSOIL DRAIN TILE
- FW — FIRE WATER
- CW — DOMESTIC COLD WATER
- G — GAS
- E — ELECTRIC
- T — TELEPHONE
- PD — PROCESS DRAIN
- PG — PROPANE GAS
- C — CLEVERT W/ CONCRETE HEADWALL
- YD — YARD DRAIN
- CIB — CURB INLET
- MH — MANHOLE
- R/R — RIPRAP
- FWT — FIREWATER LINE THRUST BLOCK
- PML — POLE MOUNTED LIGHT FIXTURES
- FH — FIRE HYDRANT
- PIV — POST INDICATOR VALVE (PIV)
- CO — CLEANOUT (CO)

SITE UTILITIES PLAN KEYNOTES

- 1 WATER MAIN TO BE EXTENDED FROM MACKENON RD BY LOCAL UTILITY CO.
- 2 EXISTING 8" GAS MAIN
- 3 TERMINAL POLE AND EXTENSION OF ELECTRIC AND TELEPHONE SERVICE BY LOCAL UTILITY CO.
- 4 C.W. METER PIT WITH FIRE ALARM CHECK VALVE, BACKFLOW PREVENTOR, AND 8" METER
- 5 GAS METER PIT AND PRESSURE REDUCING STATION, 60 PSIG TO 5 PSIG.
- 6 BURIED ELECTRIC CONDUIT TO BE CONCRETE ENCASED FROM ELECTRIC PRIMARY DROP TO TRANSFORMERS
- 7 150,000 GALLON FIREWATER STORAGE TANK WITH 3,000 GPM DIESEL DRIVEN FIRE PUMP.
- 8 SITE LIGHTING REQUIREMENTS HAVE NOT BEEN DEVELOPED AS OF THIS DATE. LIGHTING WILL BE PROVIDED TO PROVIDE AN AVERAGE OF 1 FC OF ILLUMINATION FOR ALL PARKING AREAS AND PEDESTRIAN WALKWAYS
- 9 EXISTING 18" SANITARY SEWER
- 10 CONCRETE TRANSFORMER PADS
- 11 CONCRETE HEADWALL DRAINAGE STRUCTURE. SEE SHEET 3
- 12 CONCRETE DRAINAGE STRUCTURE HEADWALL
- 13 PROVIDE RODENT GATE ON CONCRETE DRAINAGE STRUCTURE
- 14 DRYWELL FOR TRUCK DOCK TRENCH DRAIN DOCK AND DRYWELL WILL BE REMOVED WHEN FUTURE BUILDING ADDITION IS CONSTRUCTED.
- 15 CLEANOUTS ON EXTERIOR SANITARY SEWERS TO BE 6" SEE LOCATE @ 10'-0" MAX. FROM EXTERIOR BUILDING WALL, AT POINTS WHERE SEWER CROSSES CASEMENT AND AT 100'-0" MAXIMUM INTERVALS BETWEEN THESE POINTS.
- 16 FIRE DEPT. SAMESSE CONNECTION
- 17 MAXIMUM PERMITTED WIDTH FOR TREE CLEARING AND SEWER EXCAVATION IS LIMITED TO 20'-0"
- 18 LOCATION OF FILTER BASIN. SEE SHEET NO. 3.1



THIS DOCUMENT SHALL BE USED ONLY FOR:

PLAN APPROVAL

DRAWN: E.M.KRECH
 CHECKED: W.G. WILLIAMS
 DATE: 6-9-85
 ISSUED: PLANNING/DESIGN REVIEW

REVISIONS	
NO.	DATE

PROJECT NUMBER: 3840

DRAWING TITLE: **SITE UTILITIES PLAN**

SHEET 4 OF