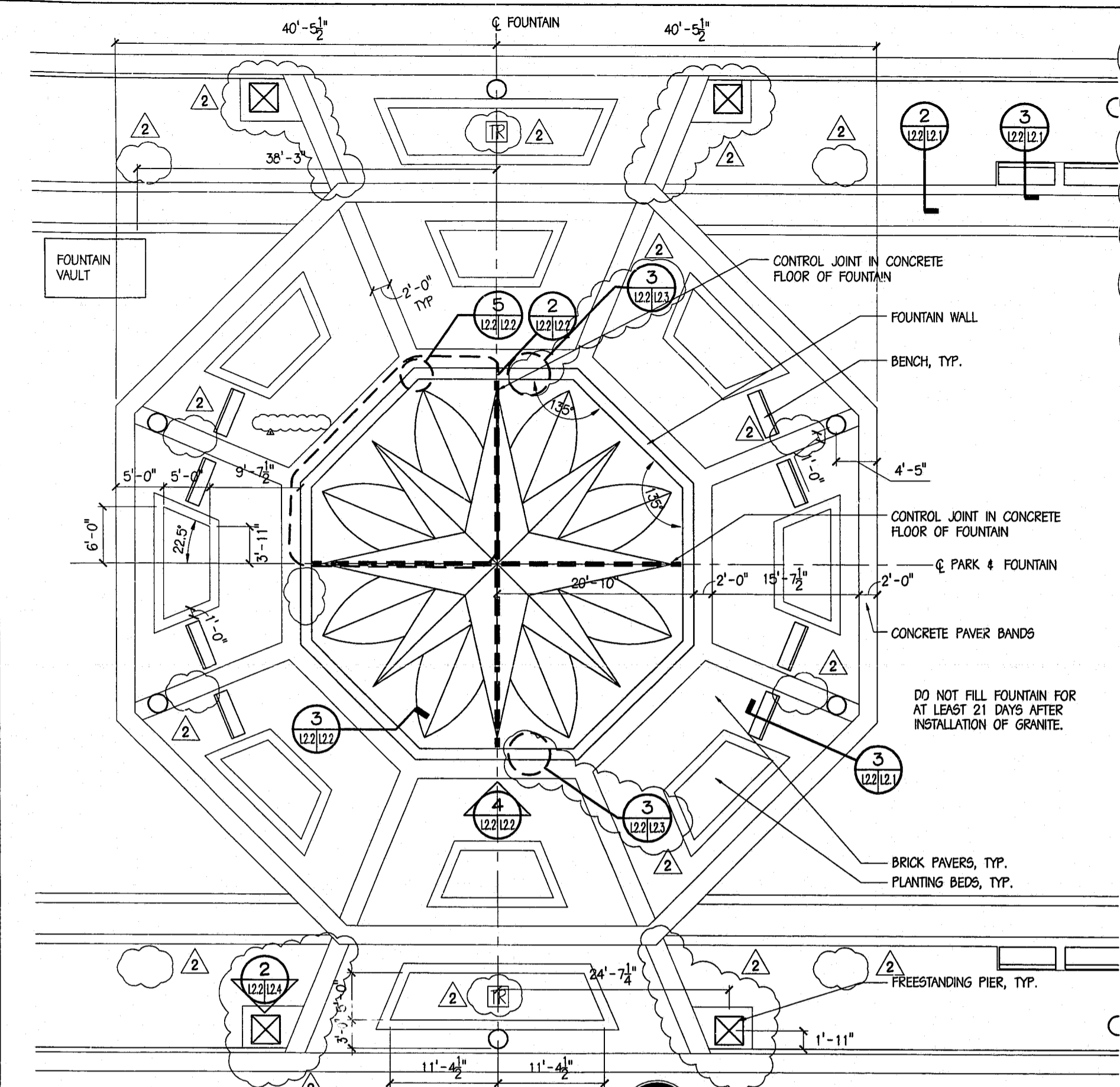
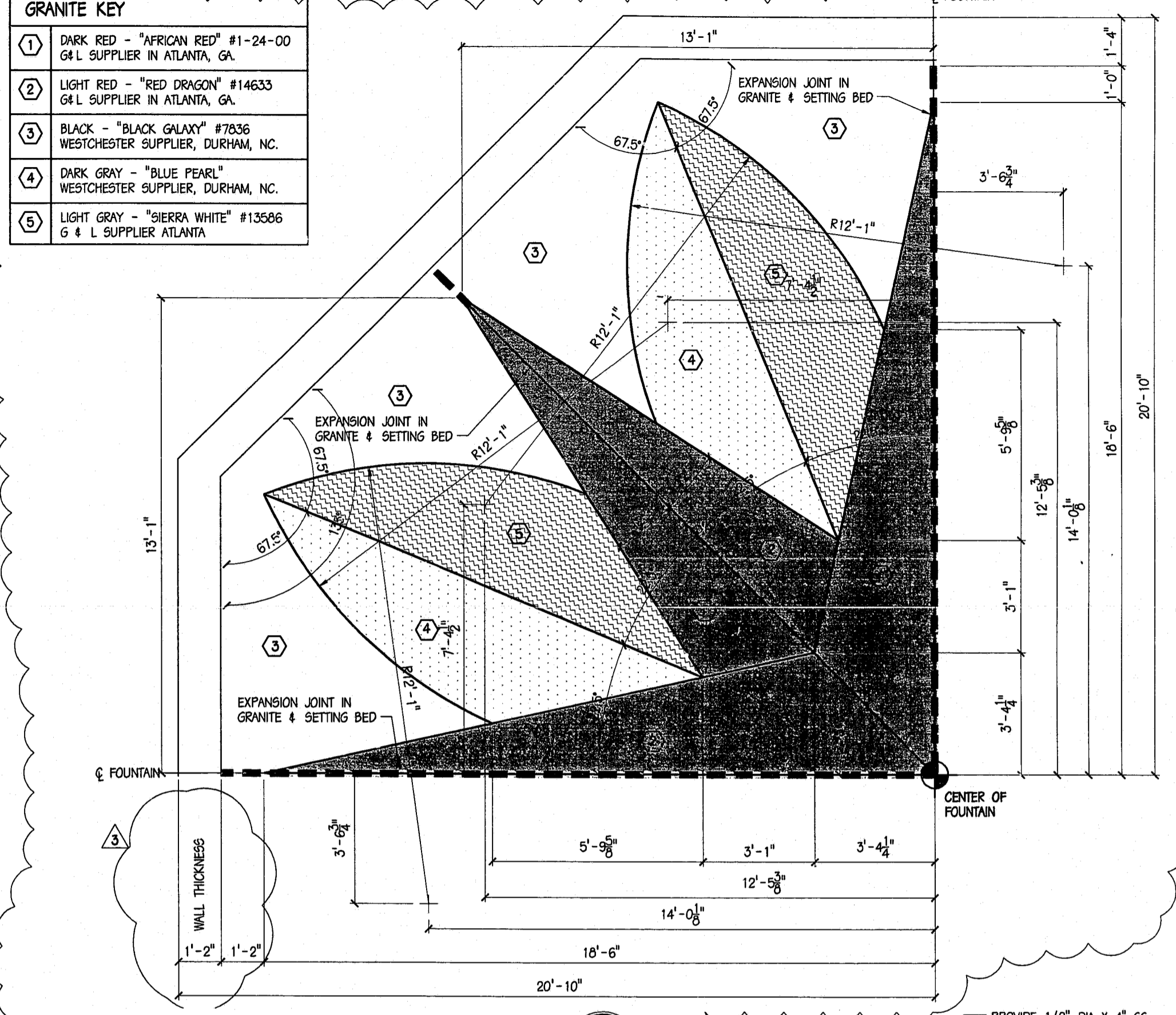


GRANITE KEY

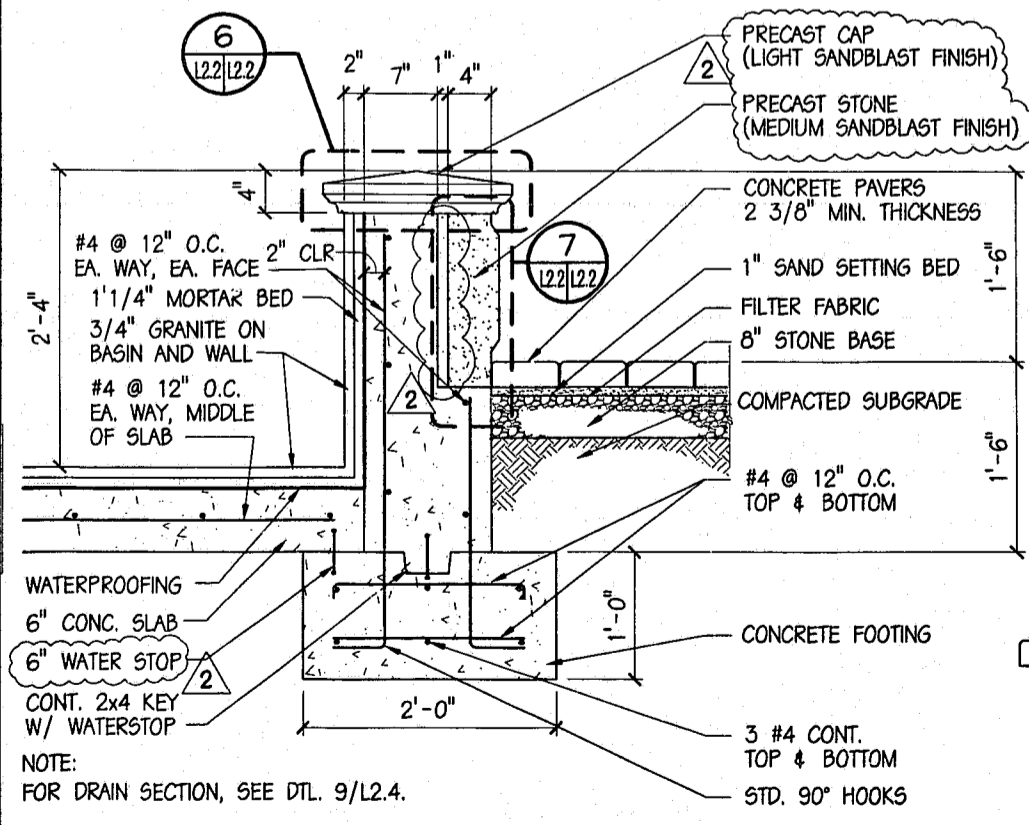
1	DARK RED - "AFRICAN RED" #1-24-00 G&L SUPPLIER IN ATLANTA, GA.
2	LIGHT RED - "RED DRAGON" #14633 G&L SUPPLIER IN ATLANTA, GA.
3	BLACK - "BLACK GALAXY" #7836 WESTCHESTER SUPPLIER, DURHAM, NC.
4	DARK GRAY - "BLUE PEARL" WESTCHESTER SUPPLIER, DURHAM, NC.
5	LIGHT GRAY - "SIERRA WHITE" #13586 G & L SUPPLIER ATLANTA



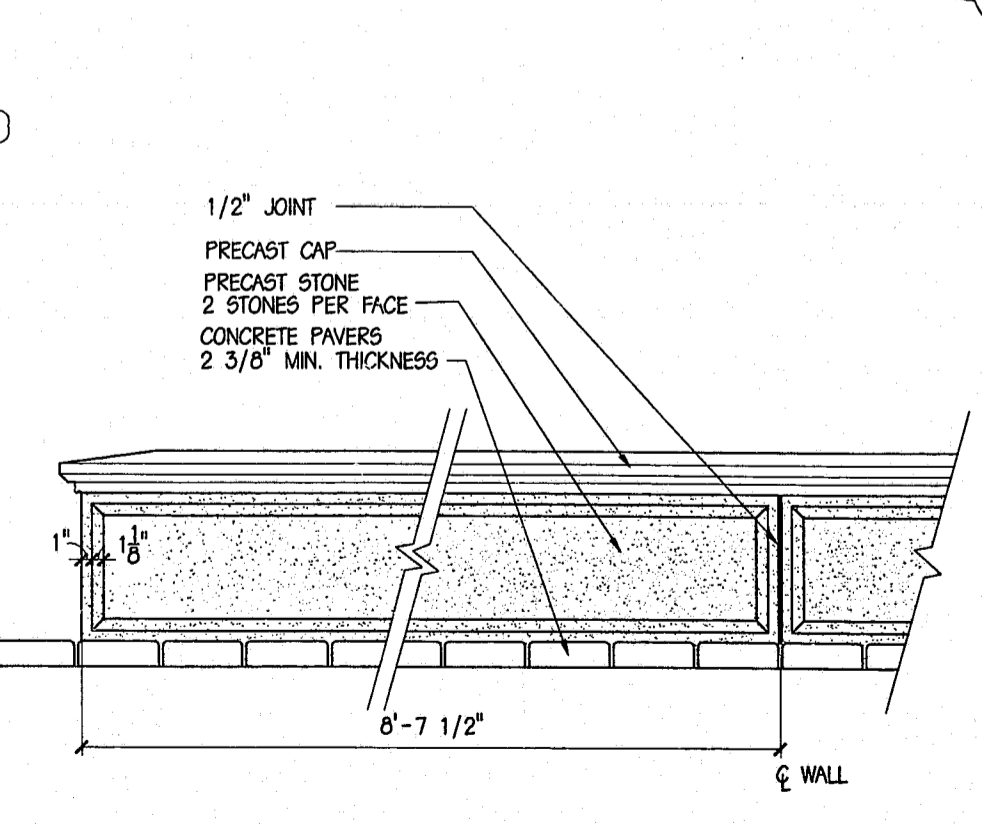
1 ENLARGED FOUNTAIN PLAN
 SCALE: 1/8" = 1'-0"



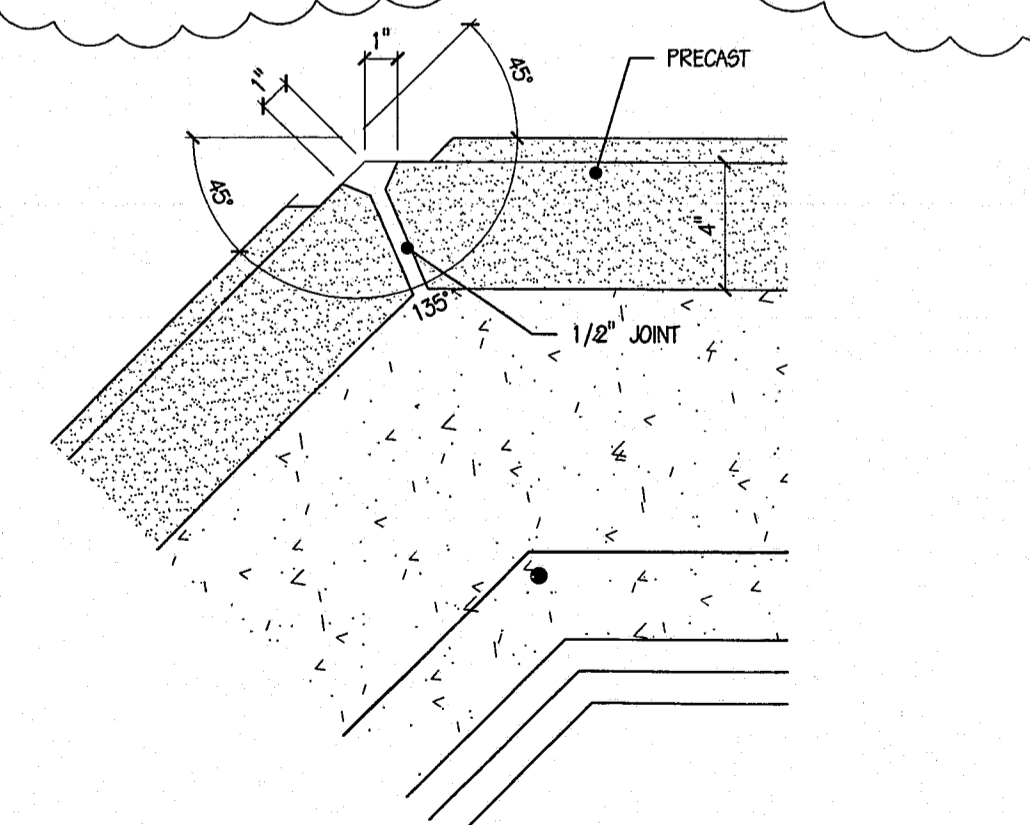
2 PARTIAL FOUNTAIN PLAN
 SCALE: 1/2" = 1'-0"



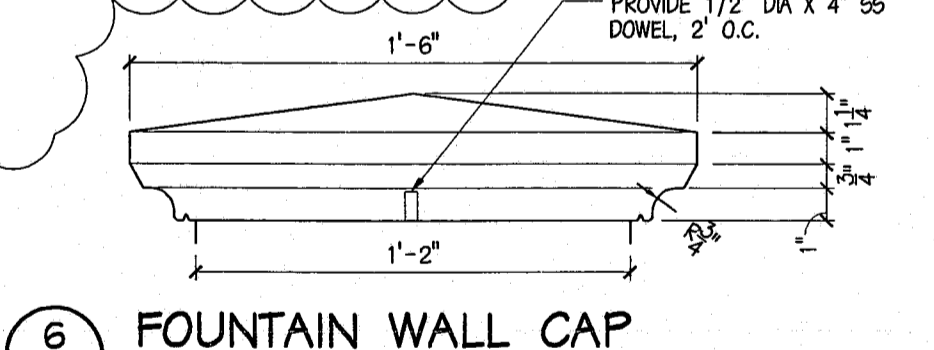
3 FOUNTAIN SECTION
 SCALE: 1" = 1'-0"



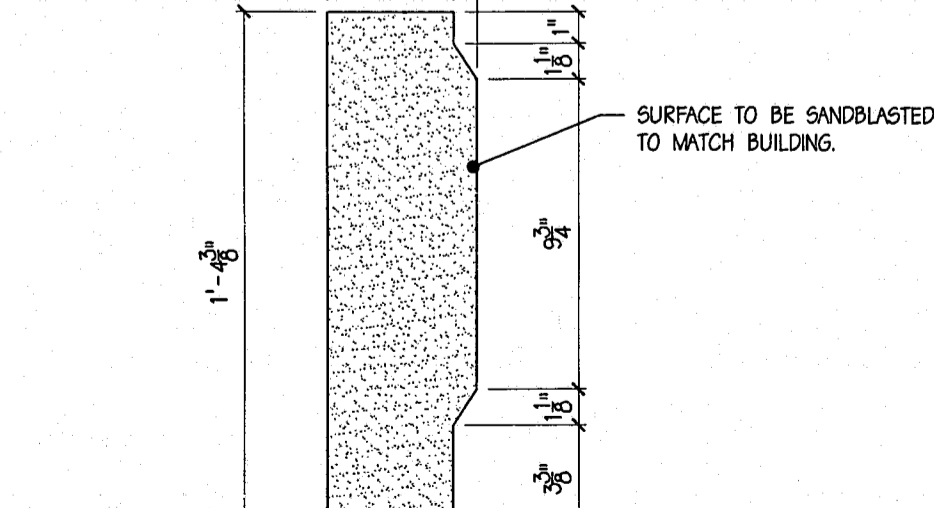
4 FOUNTAIN WALL PRECAST
 SCALE: 1" = 1'-0"



5 FOUNTAIN WALL CORNER DETAIL
 SCALE: 3" = 1'-0"



6 FOUNTAIN WALL CAP
 SCALE: 3" = 1'-0"



7 FOUNTAIN WALL PRECAST
 SCALE: 3" = 1'-0"

NOTE:
FOR DRAIN SECTION, SEE DTL. 9/L2.4.

DO NOT FILL FOUNTAIN FOR AT LEAST 21 DAYS AFTER INSTALLATION OF GRANITE.

CMS ARCHITECTS, P.C. expressly reserves the rights under common law copyright and ownership rights in connection with the designs, concepts, and drawings presented in this document. This document, its contents, and drawings shall not be reproduced, changed, or copied in any form or manner whatsoever, nor shall they be assigned to any third party without expressed written consent of CMS ARCHITECTS, P.C. in writing.