

CROSSROADS FORD SERVICE CENTER

Cary, North Carolina

Amended Site Plan Submittal

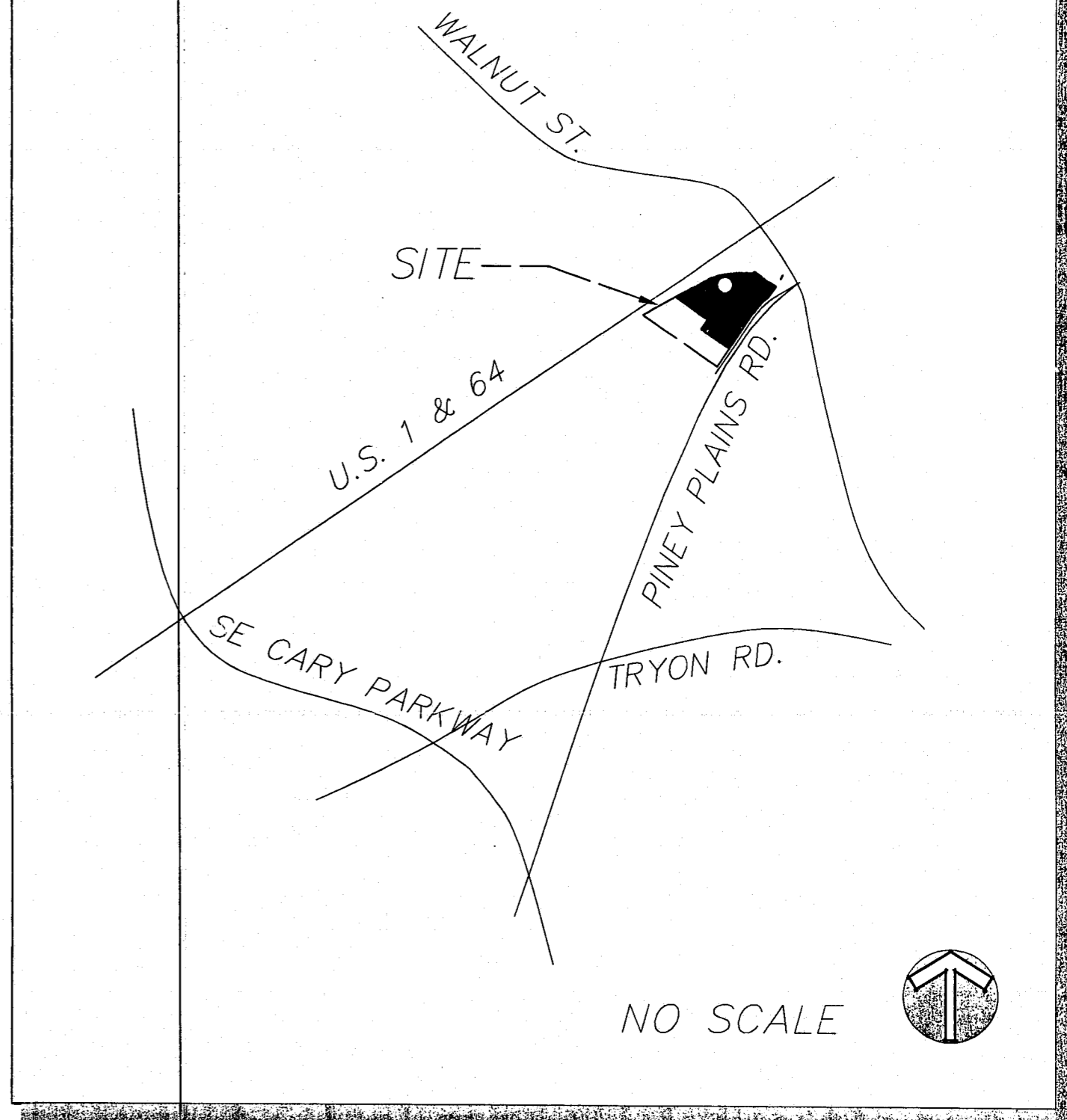
2 October 2000

revised: 30 October 2000

REVISIONS TO ORIGINAL SITE PLAN

1. QUICK LUBE DOORS REARRANGED, STACKING AISLES ADJUSTED ACCORDINGLY.
2. SIDEWALK AT BUILDING ENTRANCE RECONFIGURED
3. ISLAND ADDED AT PARTS SALES PARKING.
4. LOADING DOCK/CAR WASH AREA RECONFIGURED.
5. WESTERN WING OF REPAIR AREA FLIPPED. PARKING ADJUSTED ACCORDINGLY.
6. FIRE LINE SHIFTED TO MATCH ARCHITECTURAL DWGS.
7. HYDRANT IN PARKING LOT NORTH OF SERVICE CENTER MOVED.
8. RADIUS AT DROP-OFF STACKING INCREASED TO 40'

vicinity map



developer/owner:

CROSSROADS HOLDINGS, LLC
1101 BUCK JONES ROAD
RALEIGH, NC 27606
(919) 467-1881

consultants:

Land Planner/Landscape Architect:
JERRY TURNER & ASSOCIATES, INC.
RALEIGH, NORTH CAROLINA

Engineer:

BASS, NIXON & KENNEDY
RALEIGH, NORTH CAROLINA

index

- SITE-1 SITE PLAN
- SITE-2 GRADING, STORM DRAINAGE & EROSION CONTROL PLAN
- SITE-3 UTILITY PLAN
- SITE-4 LANDSCAPE PLAN
- SITE-5 PLANT LIST & DETAILS
- SITE-6 SITE DETAILS
- SITE-7 SITE DETAILS
- SITE-8 SITE LIGHTING PLAN
- SITE-9 PAVEMENT MARKING PLAN
- SITE-10 ROAD WIDENING PLAN
- SITE-11 PLAN & PROFILE - SEWER OUTFALL
- SITE-12 STORM SEWER PROFILES
- SITE-13 STORM SEWER PROFILES
- SITE-14 DETENTION BASIN GRADING
- SPA1 BUILDING ELEVATIONS
- SPA2 BUILDING FLOOR PLAN

STATEMENT OF ARCHITECTURAL COMPATIBILITY

Primary Physical Characteristics:

Colors: The primary colors are white, light grey, and blue. The white will be used in split architectural blocks for the masonry surfaces and white painted on the metal surfaces. The 8" inch wide metal stripe shown on the plan will be "Ford Blue". "Ford Blue" and Light Grey will be the only accent colors.

Materials: The dominant material is split masonry block white in color, and various metal features painted white with the 8" wide metal stripe being "Ford Blue".

Primary Landscape Themes:

Trees, shrubs and ground covers shall be selected based on their adaptability to the development's soils, and shall be grouped according to water requirements. Native plants may be grouped with ornamental plants as long as their water requirements are similar.

The dominant shade trees for the major entrances shall be one drought tolerant species with the same ornamental tree repeated as a visual cue. Parking lots on the interior of the development shall in general have one major drought tolerant shade tree species with drought tolerant shrubs and ornamental trees to provide interest on a pedestrian scale as well as to visually reduce the scale of parking areas. The shade tree species at the entrances shall be repeated intermittently in the parking lot areas to visually link buildings and/or to identify pedestrian connectors between major building groups. Drought tolerant evergreens shall be utilized to screen service areas and to "soften" masonry dumpster walls.

The street yard trees specified for the Piney Plains Road shall be "October Glory" Maples with Yoshino Cherry for interest and scale. Parking areas shall be screened from public rights-of-way with evergreen material according to Town of Cary officials.

Building Height:

The average height of the building at the front faces will be 18.2' with a height of 32' at the peak of the roof.

Lighting Elements:

The parking lot fixtures will be black anodized poles with metal halide lamps of a similar height, wattage, and light color. Height and light output will not exceed Cary's ordinance. Any under canopy lighting will be recessed fluorescent or metal halide. Security lights on the building will be shoe box type matching the pole lights.

- TYPE A: SINGLE 250 WATT METAL HALIDE SHOEBOX LUMINAIRE W/TYPE 5 REFLECTOR SYSTEM MOUNTED ON 25' TALL POLE
- TYPE B: SINGLE 250 WATT METAL HALIDE SHOEBOX LUMINAIRE W/TYPE 3 OVAL REFLECTOR SYSTEM MOUNTED ON 25' TALL POLE
- TYPE B-S: SINGLE 250 WATT METAL HALIDE SHOEBOX LUMINAIRE W/TYPE 3 OVAL REFLECTOR SYSTEM AND BACKLIGHT SHIELD, MOUNTED ON 25' TALL POLE
- TYPE C: SINGLE 175 WATT WALL MOUNT FIXTURE PKT 1-N2-2 L3-A-DB-MT by Site Lighting Industries or equal. Fixture shall match Bcdy Shop.
- TYPE D: SINGLE 250 WATT METAL HALIDE SHOEBOX LUMINAIRE W/FORWARD THROW REFLECTOR SYSTEM MOUNTED ON 25' TALL POLE
- TYPE D-S: SINGLE 250 WATT METAL HALIDE SHOEBOX LUMINAIRE W/FORWARD THROW REFLECTOR SYSTEM AND BACKLIGHT SHIELD, MOUNTED ON 25' TALL POLE

Uniform Sign Plans:

The general sign design will be externally illuminated white & blue signs matching the signage at the existing Crossroads Ford facility on Buck Jones Road. All signage will adhere to the Cary ordinance requirements. Signage is a separate approval process and has not been approved as a part of this plan.

TOWN OF CARY
ENGINEERING DEPT.
REVIEWED BY: *[Signature]*
DATE: 11/16/00

99-SP-259-A

APPROVED
BY: *[Signature]* DATE: 10/30/00
BY: *[Signature]* DATE: 11/8/00
TOWN OF CARY
DEVELOPMENT REVIEW GROUP

REVISED PLANS - SEE ABOVE
NOTE FOR LIST OF REVISIONS