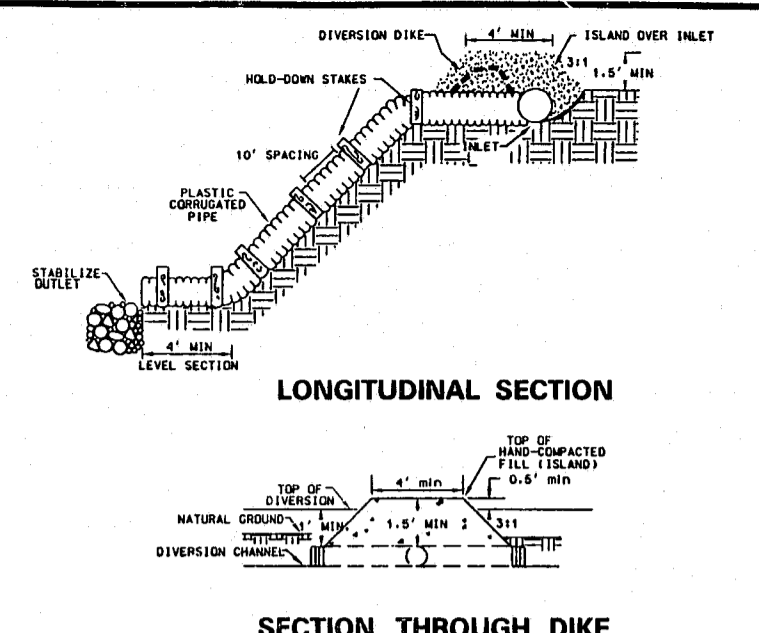


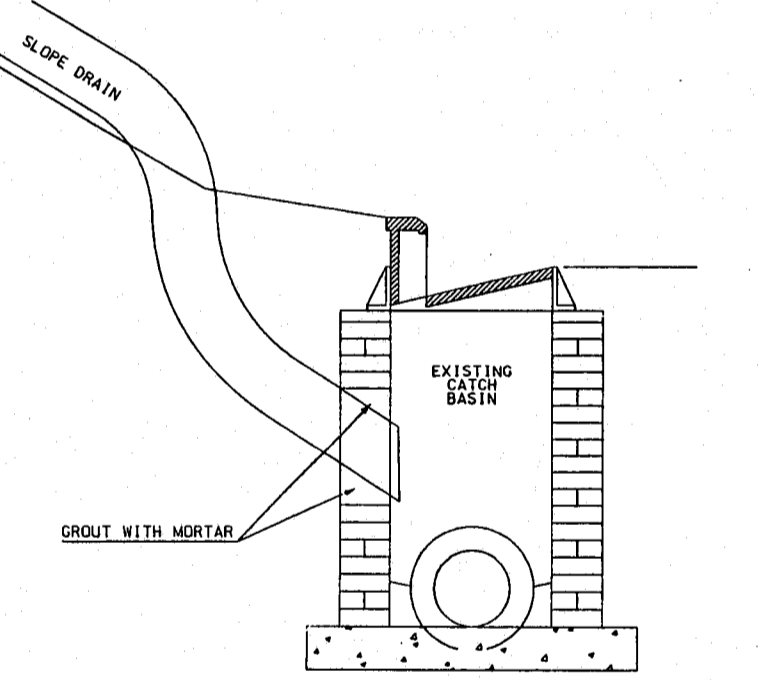
© JERRY TURNER & ASSOCIATES, INC. THIS DOCUMENT IS THE PROPERTY OF JERRY TURNER & ASSOCIATES, INC. ALL RIGHTS ARE RESERVED AND ANY REPRODUCTION, REPRODUCTION OR OTHER USE OF THIS DOCUMENT WITHOUT THE PRIOR PERMISSION OF JERRY TURNER & ASSOCIATES, INC. IS EXPRESSLY PROHIBITED.



- NOTES:
- PLACE SLOPE DRAINS ON UNDISTURBED SOIL OR WELL COMPACTED FILL AT LOCATIONS AND ELEVATIONS SHOWN ON PLAN.
 - SLIGHTLY SLOPE THE SECTION OF PIPE UNDER THE DIKE TOWARD ITS OUTLET.
 - HAND TAMP THE SOIL UNDER AND AROUND THE ENTRANCE SECTION IN LIFTS NOT TO EXCEED 6 INCHES.
 - ENSURE THAT THE FILL OVER THE DRAIN AT THE TOP OF THE SLOPE HAS MINIMUM DIMENSIONS OF 1.5 FT. DEPTH, 4' TOP WIDTH AND 3:1 SIDE SLOPES.
 - ENSURE THAT ALL SLOPE DRAIN CONNECTIONS ARE WATERTIGHT.
 - ENSURE THAT ALL FILL MATERIAL IS WELL COMPACTED, SECURELY FASTEN THE EXPOSED SECTION OF THE DRAIN WITH GROMMETS OR STAKES SPACED NO MORE THAN 10 FEET APART.
 - EXTEND THE DRAIN BEYOND THE TOE OF THE SLOPE AND ADEQUATELY PROTECT THE OUTLET FROM EROSION.
 - MAKE THE SETTLED, COMPACTED DIKE RIDGE NO LESS THAN 1 FOOT ABOVE THE TOP OF THE PIPE AT EVERY POINT.
 - IMMEDIATELY STABILIZE ALL DISTURBED AREAS FOLLOWING CONSTRUCTION.

Cross section of temporary slope drain

NOTE: TEMPORARY SLOPE DRAINS TO "TIE" INTO EXISTING DRAINAGE BASINS ON CROSSROADS FORD BODY SHOP PROPERTY. SEE PLAN AND CONSTRUCTION SEQUENCE ON SHEET SITE-2.

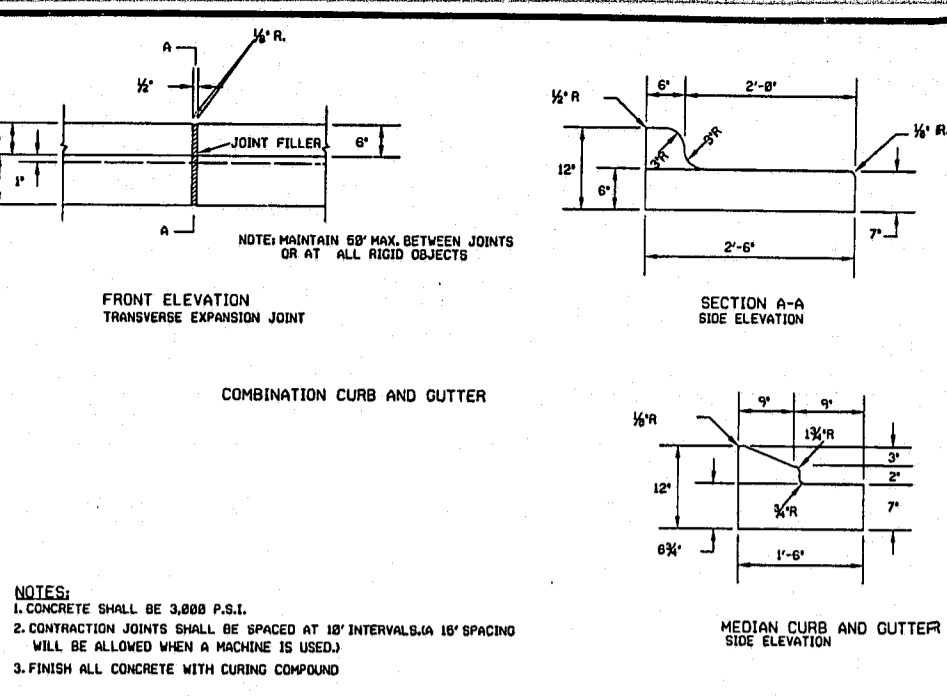
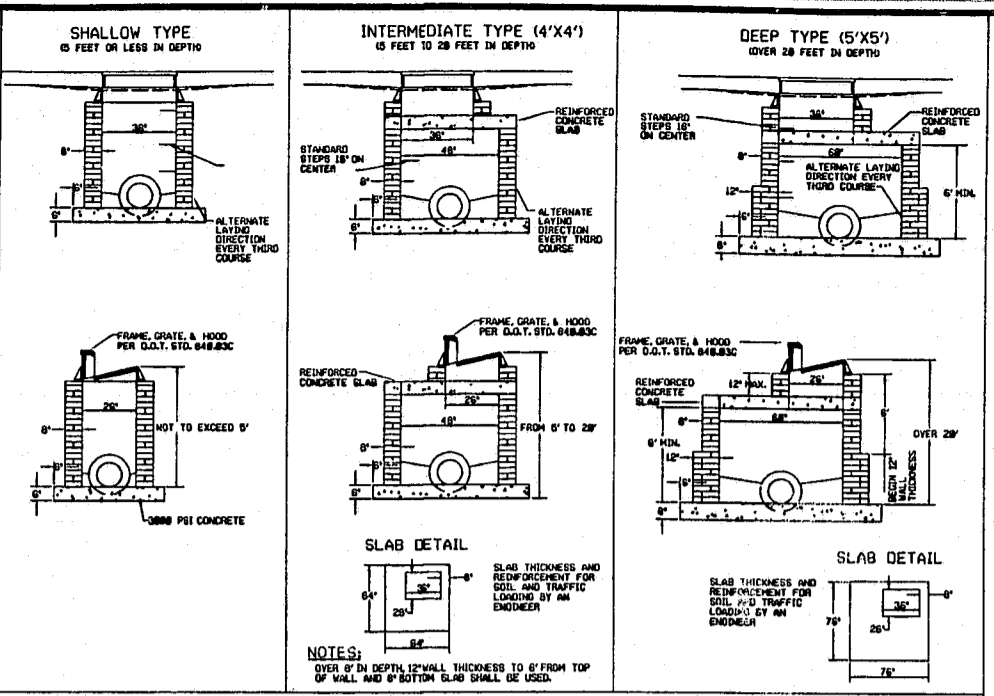


NOTE: SLOPE DRAIN MUST ENTER THROUGH WALL OF CATCH BASIN (WHERE SHOWN ON PLAN), NOT THROUGH GRATE OR HOOD OPENING.

REPAIR WALL OF CATCH BASIN WITH BRICK AND MORTAR AFTER SLOPE DRAIN REMOVAL.

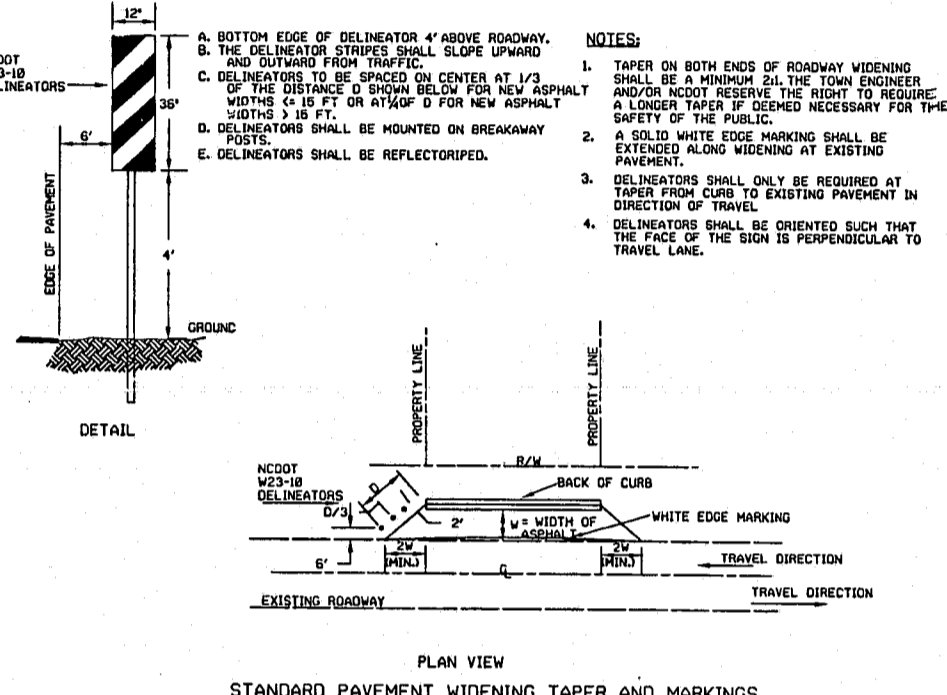
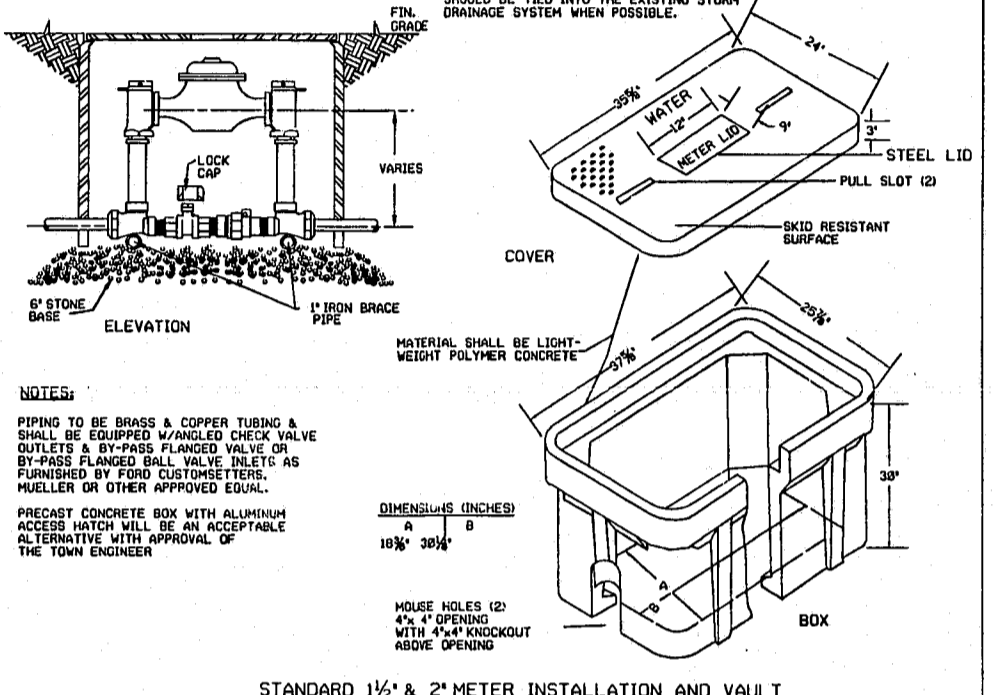
ACCUMULATED SEDIMENT MUST BE REMOVED FROM STORM DRAINAGE SYSTEM WHEN SITE IS COMPLETELY STABILIZED.

METHOD OF CONNECTING SLOPE DRAIN TO EXISTING CATCH BASIN
(NOT TO SCALE)



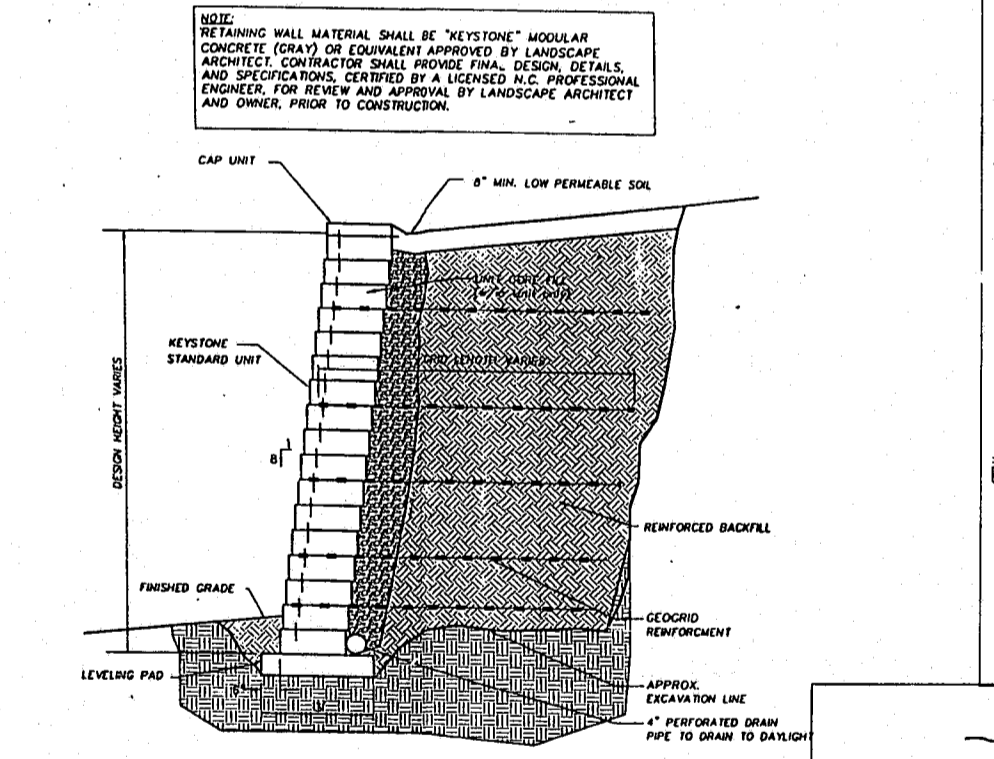
CONCRETE BLOCK OR BRICK CATCH BASIN

STANDARD CONCRETE CURB AND GUTTER



STANDARD 1 1/2' x 2' METER INSTALLATION AND VAULT

STANDARD PAVEMENT WIDENING TAPER AND MARKINGS



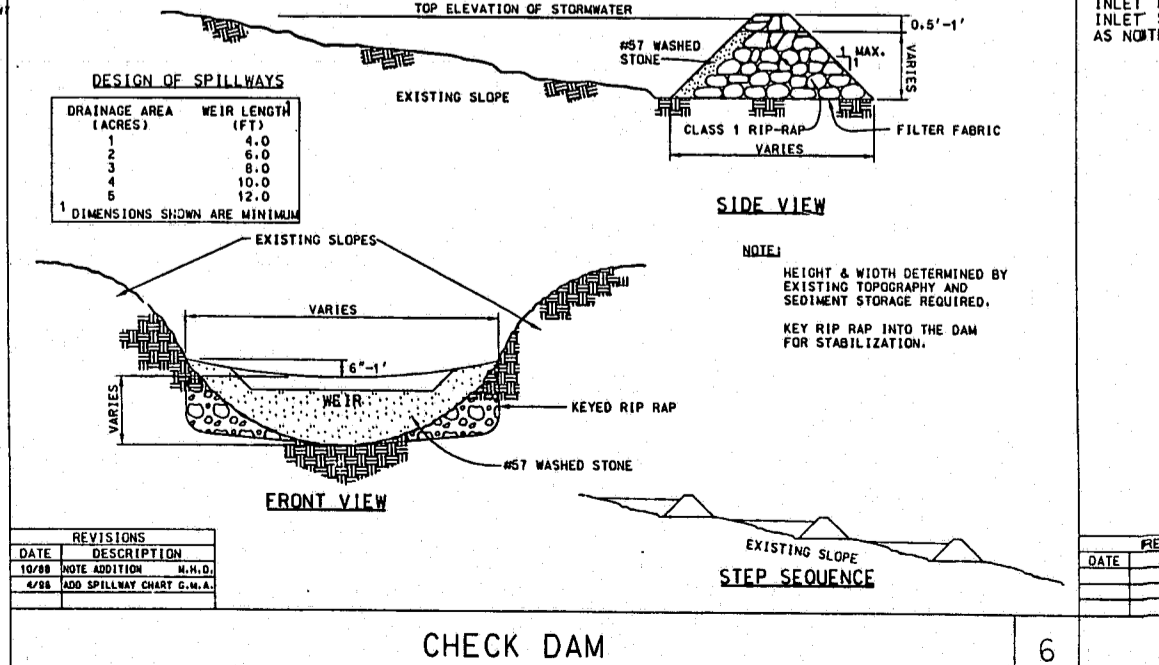
STANDARD UNIT - .1' SETBACK
MODULAR RETAINING WALL

MINIMUM CONCRETE BLOCKING (C.Y.)

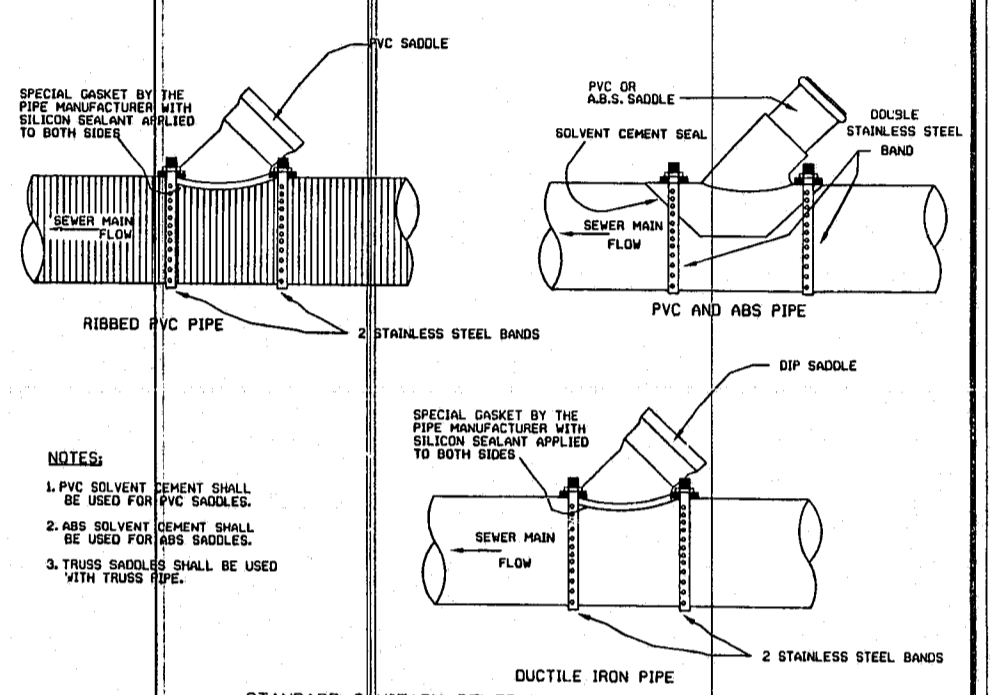
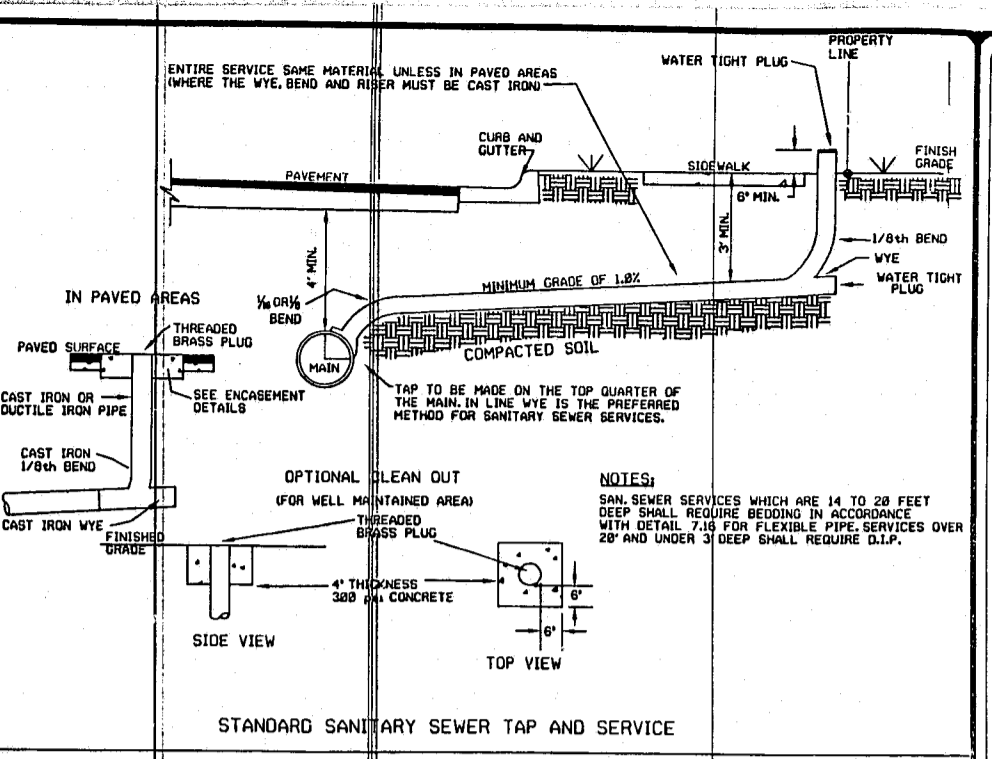
NOM. PIPE DIA. IN.	TEES & DEAD ENDS	90° BEND	45° BEND	22 1/2° BEND	11 1/4° BEND
4	1/3	1/3	1/3	1/3	1/3
6	1/3	1/3	1/3	1/3	1/3
8	1/3	1/2	1/3	1/3	1/3
10	2/3	3/4	1/2	1/3	1/3
12	3/4	1.0	2/3	1/3	1/3
14	1.0	1 1/4	3/4	1/2	1/3
16	1 1/3	2.0	1.0	1/2	1/3
18	1 2/3	2 1/3	1 1/3	2/3	1/3
20	2.0	3.0	1 2/3	3/4	1/2
24	3.0	4 1/3	2 1/3	1 1/3	2/3

CONCRETE SHALL BE 3000 P.S.I. MIN. NO CONCRETE SHALL COVER BOLTS OR GROUNDS.

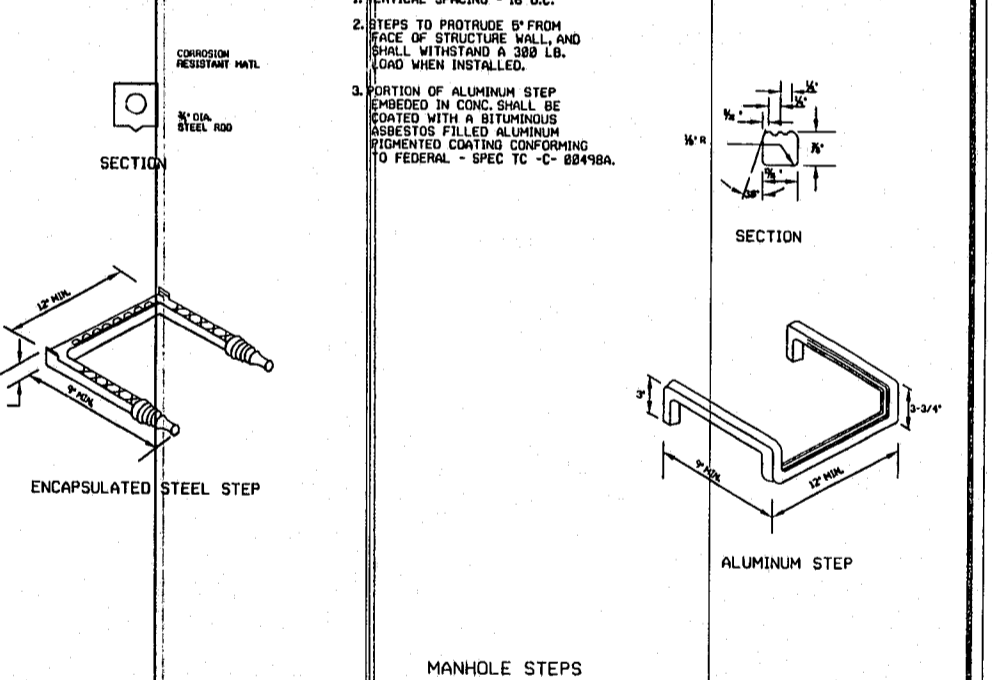
STANDARD REACTION BLOCKING



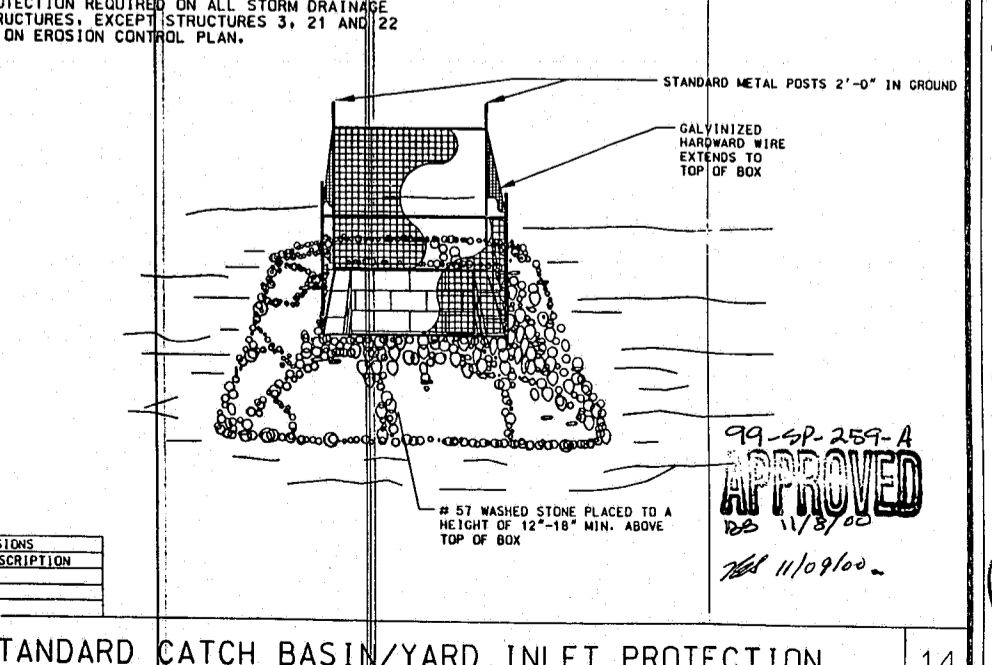
CHECK DAM



STANDARD SANITARY SEWER LATERAL CONNECTIONS



MANHOLE STEPS



STANDARD CATCH BASIN/YARD INLET PROTECTION



JERRY TURNER & ASSOCIATES, INC.

Landscape Architecture
Land Planning
Environmental Design

905 Jones Franklin Road
Raleigh, North Carolina 27606
(919) 851-7150 fax: (919) 851-7547

277 S.E. 5th Avenue
Delray Beach, Florida 33483
(561) 276-0453 fax: (561) 272-7593

CROSSROADS FORD SERVICE CENTER
1660 PINEY PLAINES ROAD
CARY, NORTH CAROLINA



BASS, NIXON, & KENNEDY, INC.
CONSULTING ENGINEERS
7416 CHAPEL HILL ROAD
RALEIGH, NC 27607
PHONE: (919) 851-4422
FAX: (919) 851-8968

REVISIONS:
MARCH 6, 2000
APRIL 17, 2000
SEPTEMBER 18, 2000

DRAWN _____ CHECKED _____
BGB WHM
SCALE _____ DATE _____
AS NOTED 12/06/99
TITLE _____

SITE DETAILS
(2 of 2)

FILE NO. _____ JOB NO. _____
JTA # 2351.02
BNK # 99472000
SEAL _____ SHEET NO. _____



SITE-7