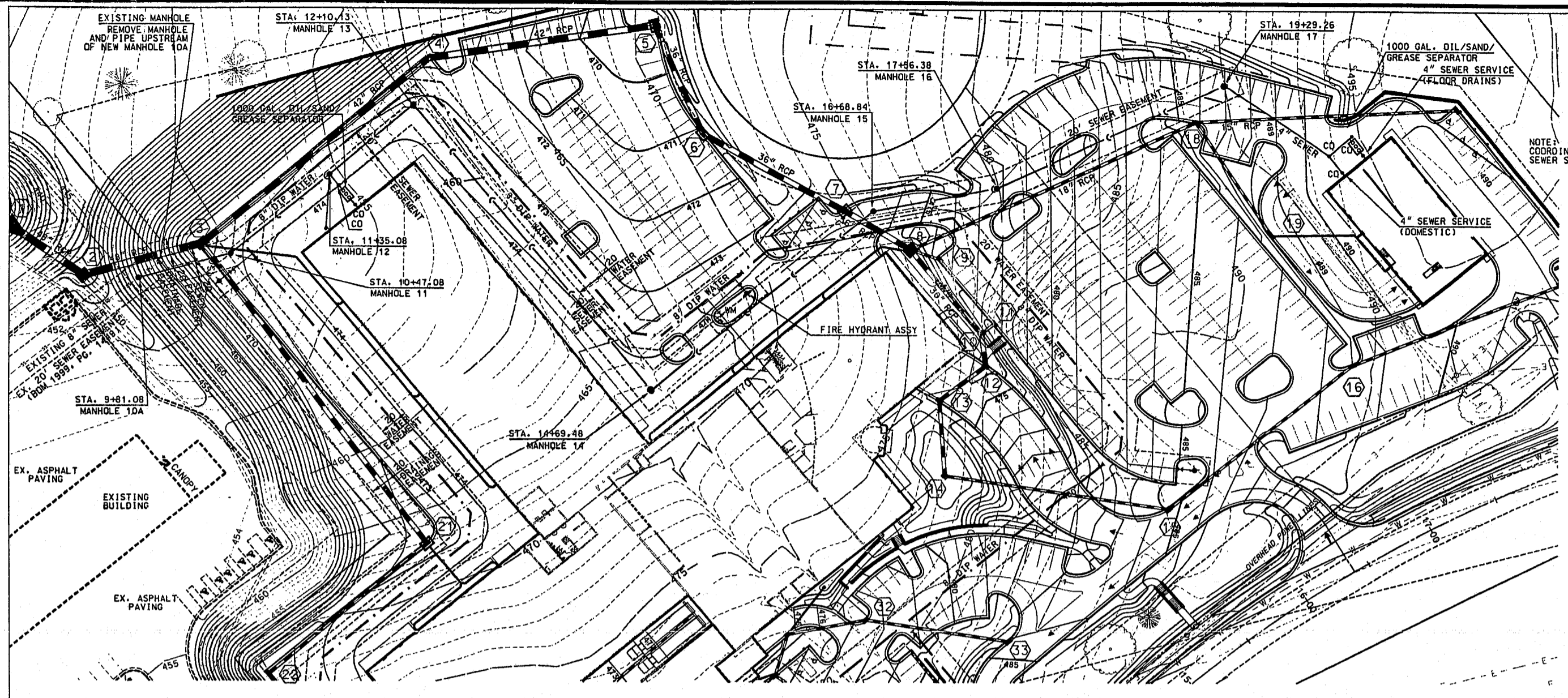
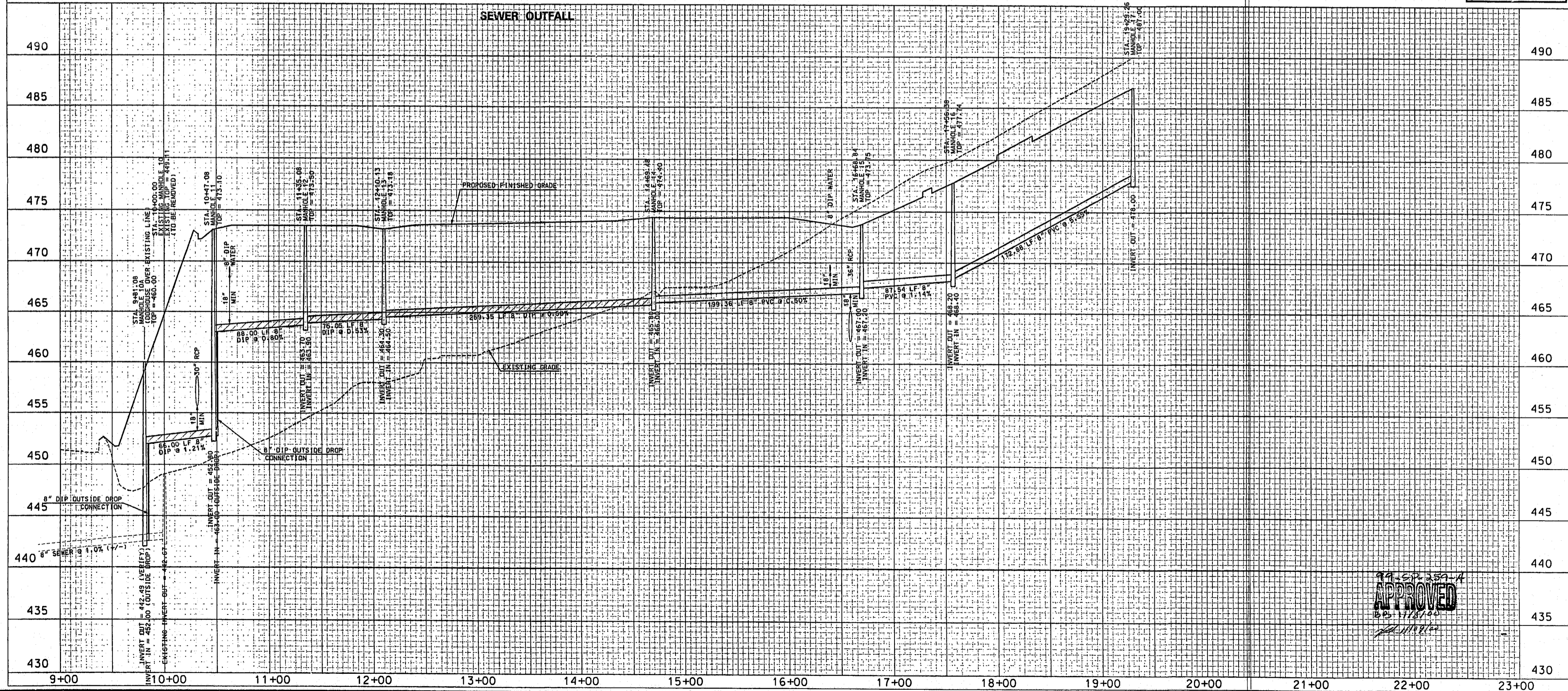
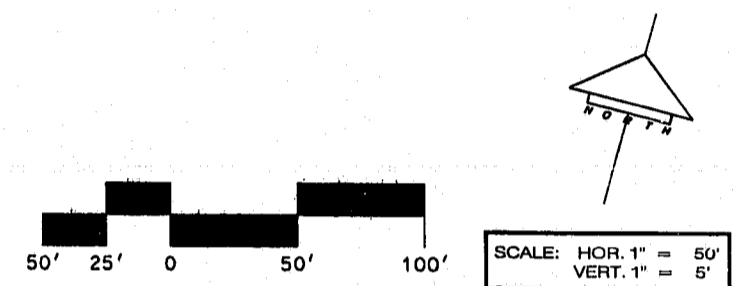


© JERRY TURNER & ASSOCIATES, INC. THIS DOCUMENT IS THE PROPERTY OF JERRY TURNER & ASSOCIATES, INC. ALL RIGHTS ARE RESERVED AND ANY POSSESSION, REPRODUCTION OR OTHER USE OF THIS DOCUMENT WITHOUT THE PRIOR PERMISSION OF JERRY TURNER & ASSOCIATES IS EXPRESSLY PROHIBITED.



NOTE: A COORDINATE LOCATION AND INVERT OF SEWER SERVICES WITH PLUMBING PLAN

IT'S THE LAW!  
AS OF JANUARY 1, 1986, NORTH CAROLINA STATE LAW REQUIRES ANYONE EXCAVATING WITH MECHANICAL EQUIPMENT ON HIGHWAY RIGHTS-OF-WAY, PRIVATE UTILITY EASEMENTS, OR PUBLIC SPACES TO NOTIFY ALL UTILITIES TWO (2) WORKING DAYS PRIOR TO DIGGING.



APPROVED  
10/24/99



**JERRY TURNER & ASSOCIATES, INC.**

Landscape Architecture  
Land Planning  
Environmental Design

905 Jones Franklin Road  
Raleigh, North Carolina 27608  
(919) 851-7150 fax. (919) 851-7547

277 S.E. 5th Avenue  
Delray Beach, Florida 33483  
(561) 276-0453 fax. (561) 272-7593

PROJECT  
**CROSSROADS  
FORD  
SERVICE  
CENTER**  
1660 PINEY PLAINES ROAD  
CARY, NORTH CAROLINA



**BASS, NIXON, & KENNEDY, INC.**  
CONSULTING ENGINEERS  
7416 CHAPEL HILL ROAD  
RALEIGH, NC 27607  
PHONE: (919) 851-4422  
FAX: (919) 851-8868

REVISIONS  
MARCH 6, 2000  
APRIL 17, 2000  
MAY 15, 2000  
SEPTEMBER 18, 2000

DRAWN: BGG CHECKED: WHM  
SCALE: 1" = 50' H, 1" = 5' V DATE: 12/06/99  
TITLE: PLAN & PROFILE SEWER OUTFALL

FILE NO. JTA # 2351-02  
JOB NO. BNK # 99472000  
SEAL SHEET NO.



SITE-11