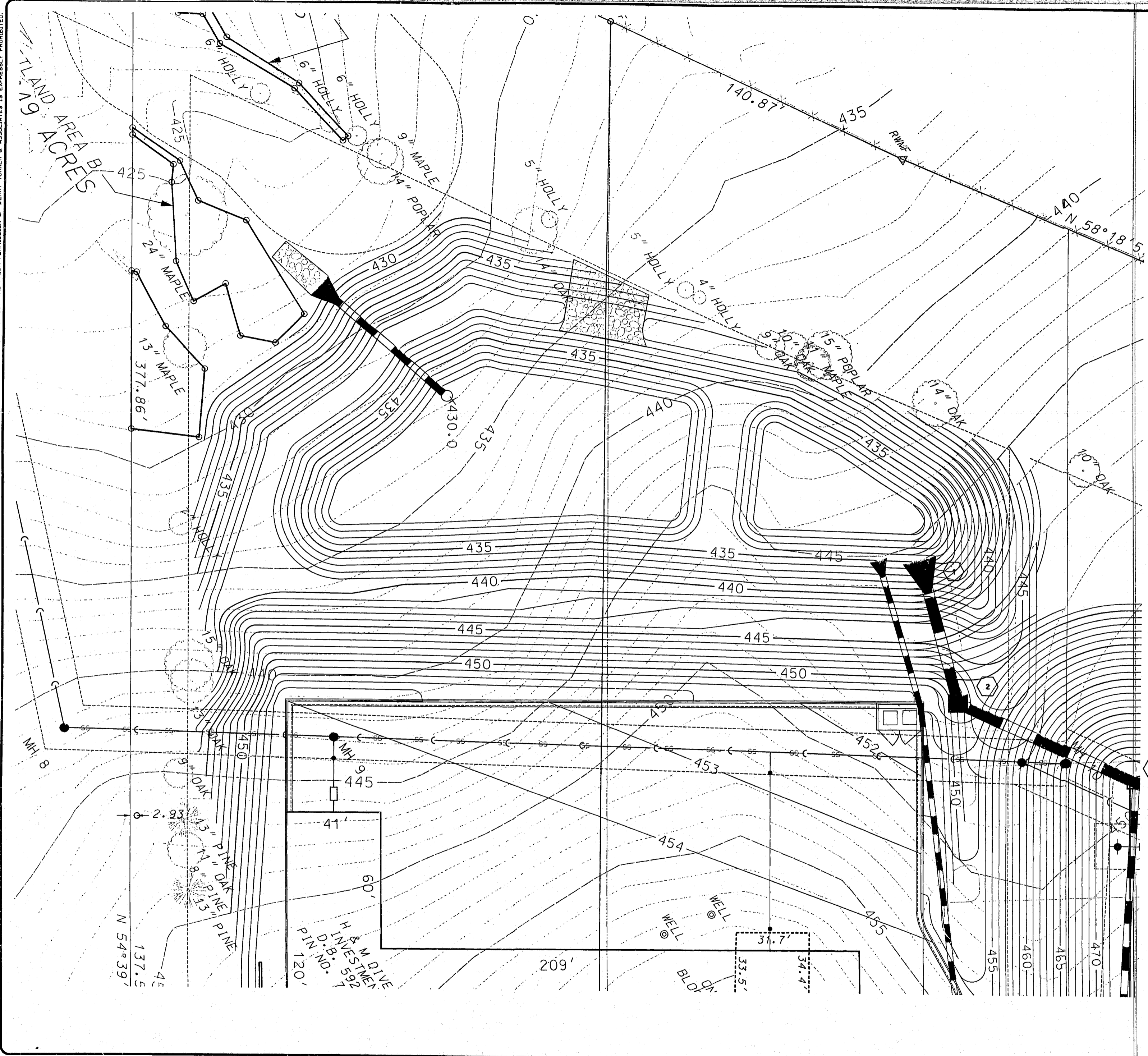


© JERRY TURNER & ASSOCIATES, INC. THIS DOCUMENT IS THE PROPERTY OF JERRY TURNER & ASSOCIATES. ALL RIGHTS ARE RESERVED AND ANY POSSESSION, REPRODUCTION, OR OTHER USE OF THIS DOCUMENT WITHOUT THE PRIOR PERMISSION OF JERRY TURNER & ASSOCIATES IS EXPRESSLY PROHIBITED.



IT'S THE LAW!  
AS OF JANUARY 1, 1986, NORTH CAROLINA STATE LAW  
REQUIRES ANYONE EXCAVATING WITH MECHANICAL  
EQUIPMENT ON HIGHWAY RIGHTS-OF-WAY, PRIVATE  
UTILITY EASEMENTS, OR PUBLIC SPACES TO NOTIFY  
ALL UTILITIES TWO (2) WORKING DAYS PRIOR TO  
DIGGING.



**JERRY TURNER & ASSOCIATES, INC.**  
Landscape Architecture  
Land Planning  
Environmental Design

905 Jones Franklin Road  
Raleigh, North Carolina 27606  
(919) 851-7150 fax. (919) 851-7547  
277 S.E. 5<sup>th</sup> Avenue  
Delray Beach, Florida 33483  
(561) 276-0453 fax. (561) 272-7593

PROJECT  
**CROSSROADS  
FORD  
SERVICE  
CENTER**  
1660 PINEY PLAINES ROAD  
CARY, NORTH CAROLINA



**BASS, NIXON, & KENNEDY, INC.**  
CONSULTING ENGINEERS  
7416 CHAPEL HILL ROAD  
RALEIGH, NC 27607  
PHONE: (919)851-4422  
FAX: (919)851-8968

REVISIONS  
APRIL 17, 2000 (SHEET ADDED)  
SEPTEMBER 18, 2000

DRAWN \_\_\_\_\_ CHECKED \_\_\_\_\_  
BGB WHM  
SCALE \_\_\_\_\_ DATE \_\_\_\_\_  
1" = 20' 12/06/99

TITLE  
**GRADING PLAN  
for DETENTION  
BASIN**

FILE NO. \_\_\_\_\_ JOB NO. \_\_\_\_\_  
BNA # 2351.02  
BNA # 99472000  
SEAL \_\_\_\_\_ SHEET NO. \_\_\_\_\_



**SITE-14**

**NOTE:**  
INFORMATION PROVIDED  
IN THIS SHEET FOR RESTORING  
DETENTION BASIN TO "FINAL"  
GRADE AFTER SERVICE CENTER  
SITE IS COMPLETELY STABILIZED.  
(SEE CONSTRUCTION SEQUENCE)

99-SP-259-A  
**APPROVED**  
11/18/00  
JTA

