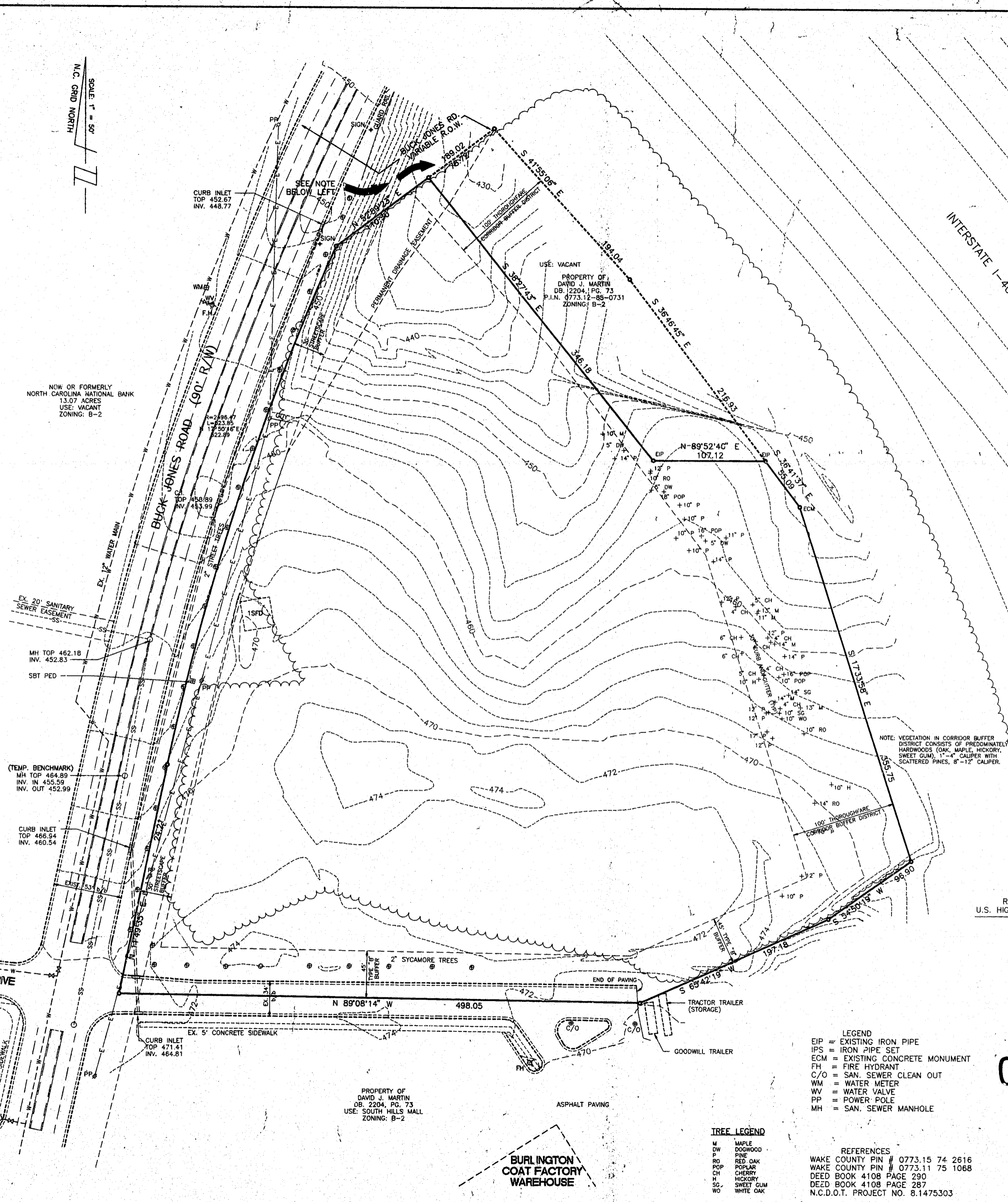


VICINITY MAP
SCALE: 1" = 500'



SITE SUMMARY DATA

OWNER OF TRACT:	CROSSROADS FORD, INC.
ZONING OF THE TRACT:	B-2
AREA OF THE TRACT:	8.759 ACRES
PROPOSED GROSS SQ. FT. OF BLDG.:	FIRST FLOOR 32,380 SQ. FT. SECOND FLOOR 11,080 SQ. FT. BODY SHOP 12,000 SQ. FT. TOTAL 55,460 SQ. FT.
VEHICLE USE AREA:	182,800 SQ. FT.
PARKING REQUIRED:	55,460 SF / 300 = 185 165,000 SF / 5000 = 33 TOTAL = 218 SPACES
PARKING PROPOSED:	423 SPACES
HANDICAP SPACES REQUIRED:	8 SPACES
HANDICAP SPACES PROPOSED:	8 SPACES
PROPOSED IMPERVIOUS AREA:	238,260 SQ. FT.

NOW OR FORMERLY
NORTH CAROLINA NATIONAL BANK
13.07 ACRES
USE: VACANT
ZONING: B-2

NOW OR FORMERLY
NORTH CAROLINA NATIONAL BANK
5.23 ACRES
USE: VACANT
ZONING: B-2

USE: VACANT
PROPERTY OF
DAVID J. MARTIN
DB: 2204, PG. 73
P.I.N. 0773.12-85-0731
ZONING: B-2

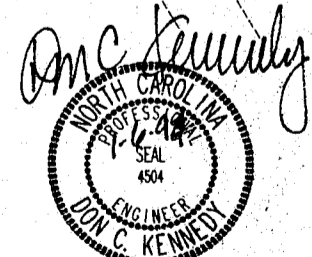
PROPERTY OF
DAVID J. MARTIN
DB: 2204, PG. 73
USE: SOUTH HILLS MALL
ZONING: B-2

NOTE: VEGETATION IN CORRIDOR BUFFER
DISTRICT CONSISTS OF PREDOMINATELY
HARDWOODS (OAK, MAPLE, HICKORY,
SWEET GUM), 1"-4" CALIBER WITH
SCATTERED PINES, 8"-12" CALIBER.

SP-143-93
APPROVED
P&E 1-17-94
TC 1-27-94
RCS

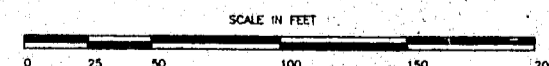
OFFICIAL APPROVED PLAN

APPROVED
DATE: 2-7-94
BY: JH Tooke
TOWN OF CARY
ENGINEERING DEPARTMENT



RAMP TO
U.S. HIGHWAY 64 &

**FOR
CONSTRUCTION**



- NOTES:
- PROPERTY SUBJECT TO UTILITY EASEMENTS ON RECORD.
 - N.C. GRID BASED ON NAD '83. ALL DISTANCES SHOWN ARE HORIZONTAL GROUND DISTANCES. COMBINED GRID FACTOR = 0.99989885.
 - ACCESS TO THE EXISTING PARCEL AT THE NORTHEAST CORNER OF THE SITE SHALL BE PROVIDED VIA BUCK JONES ROAD.

- LEGEND
- EIP = EXISTING IRON PIPE
 - IPS = IRON PIPE SET
 - ECM = EXISTING CONCRETE MONUMENT
 - FH = FIRE HYDRANT
 - C/O = SAN. SEWER CLEAN OUT
 - WM = WATER METER
 - WV = WATER VALVE
 - PP = POWER POLE
 - MH = SAN. SEWER MANHOLE

- TREE LEGEND
- M MAPLE
 - DO DW
 - DOGWOOD
 - P PINE
 - RED OAK
 - RO
 - CHOP
 - CHERRY
 - H HICKORY
 - SO SWEET GUM
 - WO WHITE OAK

- REFERENCES
- WAKE COUNTY PIN # 0773.15 74 2616
 - WAKE COUNTY PIN # 0773.11 75 1068
 - DEED BOOK 4108 PAGE 290
 - DEED BOOK 4108 PAGE 287
 - N.C.D.O.T. PROJECT NO. 8.1475303

BURLINGTON
COAT FACTORY
WAREHOUSE

BANK

BASS, NIXON, & KENNEDY, INC., CONSULTING ENGINEERS
919/851-4422/7418 CHAPEL HILL ROAD, RALEIGH, N. C. 27607

NO.	DATE	NO.	DATE

93350000 11-29-93 K. REEF
JOB NO. DATE DRAWN BY
EXISTING SITE CONDITIONS
SCALE: 1" = 50'

CROSSROADS FORD
BUCK JONES ROAD & I-40
CARY WAKE COUNTY NORTH CAROLINA

SHEET 1 OF 8