

NO.	DATE	NO.	DATE	REVISIONS

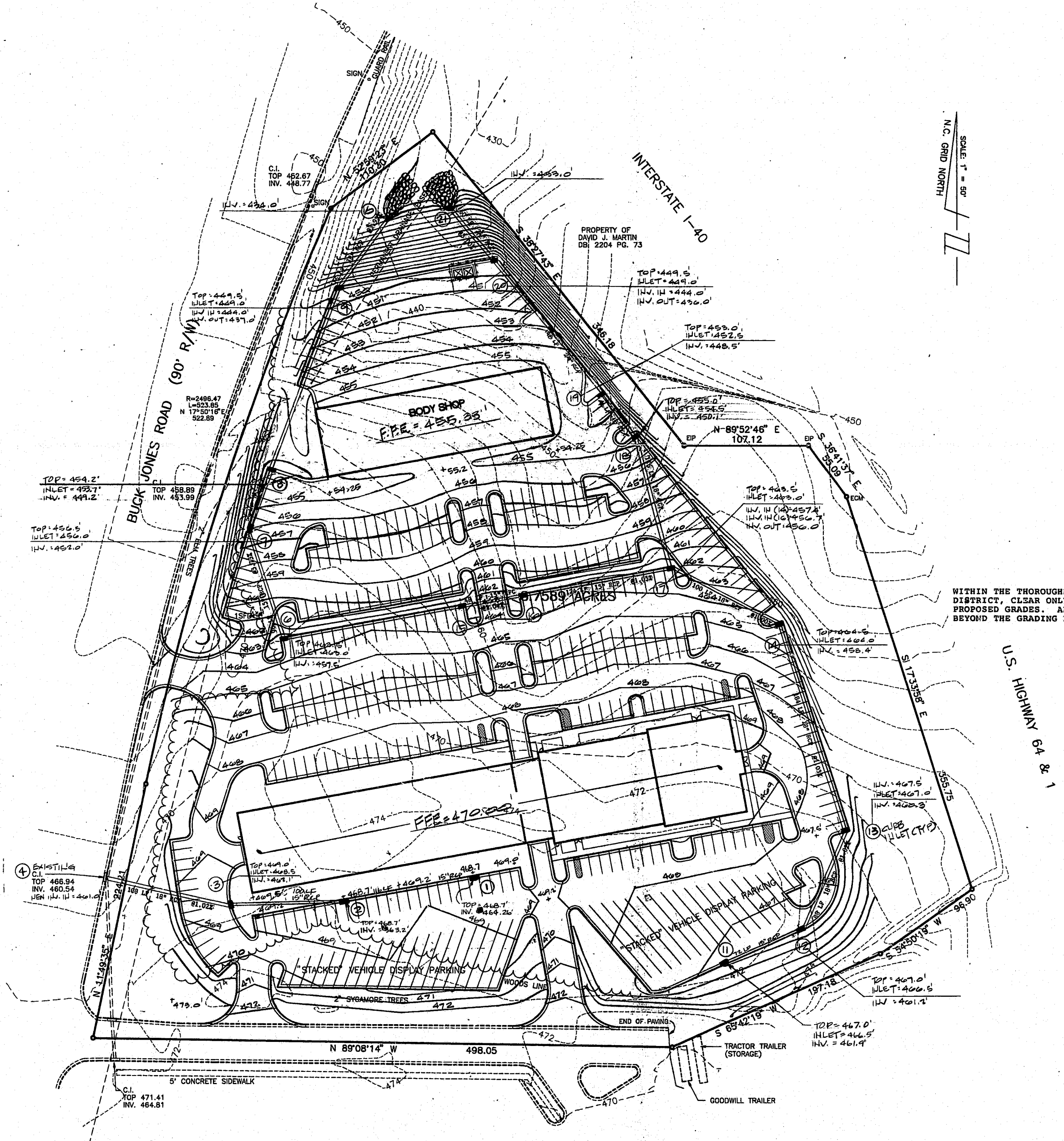
93350000 11--93
 JOB NO. DATE DRAWN BY
 SITE *DRG/LLS*
 AND *GRD/LLS*
 SCALE: 1" = 50'

CROSSROADS FORD
 BUCK JONES ROAD @ I-40
 NORTH CAROLINA
 WAKE COUNTY
 CARY

SHEET **3** OF **8**

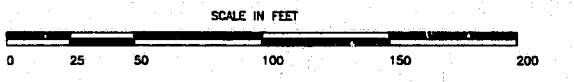
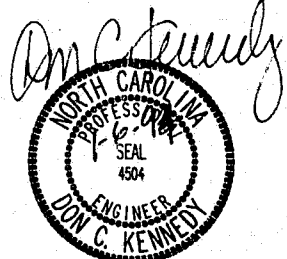
STORM DRAINAGE SUMMARY

INLET NUMBER	DRAIN AREA	C	I (IN/HR)	(CFS)	PIPE NUMBER	TOTAL Q	PIPE SIZE	PIPE SLOPE
1	0.4	0.95	7.22	2.7	1-2	2.7	15"	1.00
2	0.6	0.95	7.22	4.1	2-3	6.8	15"	1.02
3	0.3	0.95	7.22	2.1	3-4	6.8	18"	1.00
6	0.3	0.95	7.22	2.1	6-7	2.11	15"	5.73
7	0.5	0.95	7.22	3.4	7-8	5.5	15"	5.00
8	0.6	0.95	7.22	4.1	8-9	9.6	18"	3.21
9	0.3	0.95	7.22	2.1	9-10	11.7	18"	3.95
11	0.3	0.95	7.22	2.1	11-12	2.1	15"	1.02
12	0.8	0.95	7.22	5.5	12-13	7.6	18"	1.02
13	0.2	0.95	7.22	1.4	13-14	9.0	18"	1.03
14	0.2	0.95	7.22	1.4	14-17	10.4	18"	1.00
15	0.4	0.95	7.22	2.7	15-16	2.7	15"	1.04
16	0.4	0.95	7.22	2.7	16-17	5.4	15"	1.05
17	0.2	0.95	7.22	1.4	17-18	17.2	18"	5.17
18	0.4	0.95	7.22	2.7	18-19	19.9	18"	3.57
19	0.6	0.95	7.22	4.1	19-20	24.0	24"	3.03
20	0.3	0.95	7.22	2.1	20-21	26.1	24"	5.00



- LEGEND**
- EIP = EXISTING IRON PIPE
 - IPS = IRON PIPE SET
 - ECM = EXISTING CONCRETE MONUMENT
 - FH = FIRE HYDRANT
 - C/O = SAN. SEWER CLEAN OUT
 - WM = WATER METER
 - WV = WATER VALVE
 - PP = POWER POLE
 - MH = SAN. SEWER MANHOLE

WITHIN THE THOROUGHFARE CORRIDOR BUFFER DISTRICT, CLEAR ONLY AS NEEDED TO ACHIEVE PROPOSED GRADES. ALL EXISTING VEGETATION BEYOND THE GRADING LIMITS TO REMAIN UNDISTURBED.



REFERENCES
 WAKE COUNTY PIN # 0773.15 74 2616
 WAKE COUNTY PIN # 0733.11 75 1068
 DEED BOOK 4108 PAGE 280
 DEED BOOK 4108 PAGE 287
 N.C.D.O.T. PROJECT NO. 8.1475303

NOTES
 1) PROPERTY SUBJECT TO UTILITY EASEMENTS ON RECORD.
 2) N.C. GRID BASED ON NAD '83. ALL DISTANCES SHOWN ARE HORIZONTAL GROUND DISTANCES. COMBINED GRID FACTOR = 0.9998985.

PROPERTY OF DAVID J. MARTIN DB. 2204 PG. 73