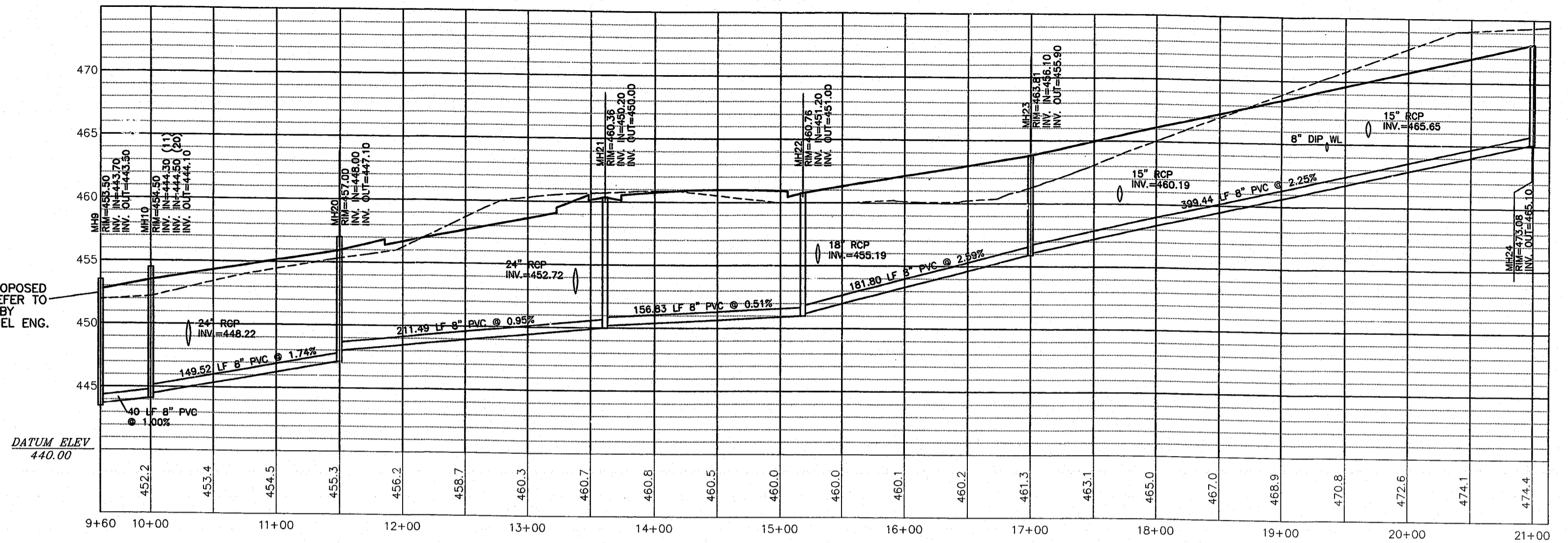
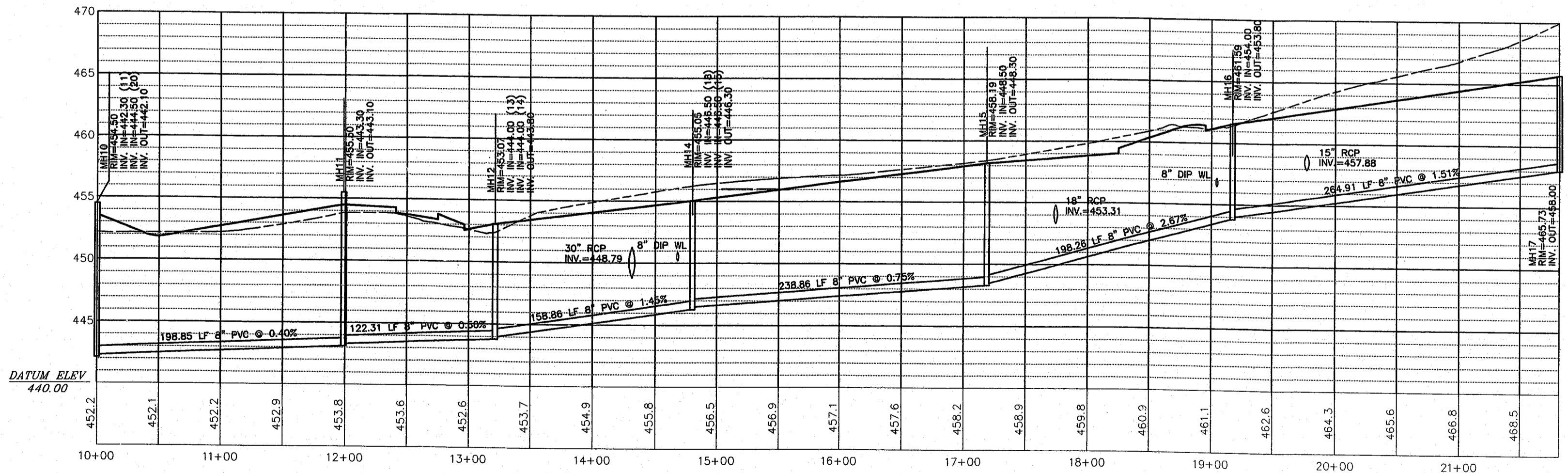


MH 9 TIES TO PROPOSED PUMP STATION. REFER TO SEPARATE PLANS BY WITHERS & RAVENEL ENG. & SURV. INC.

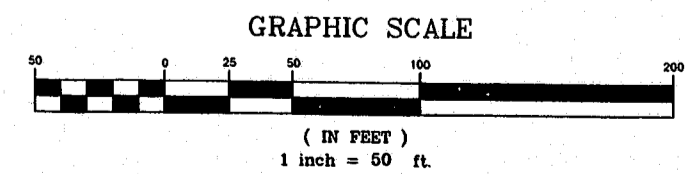
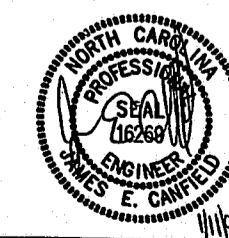


LINE "A"



LINE "C"

78-57-244
APPROVED
1-15-99
TM 1-19-99



No.	Description	Date	By
1	PRELIMINARY REVIEW	10/20/98	JAS
2	REVISED	12/15/98	JAS
3	FOR COMMENTS	1/12/99	JAS

Designer	WJR	Scale	NTS
Drawn By	GAS	Date	10/13/98
Checked By	JEC	Job No.	98135

CAD File	SHT2.DWG
Sheet No.	4 of