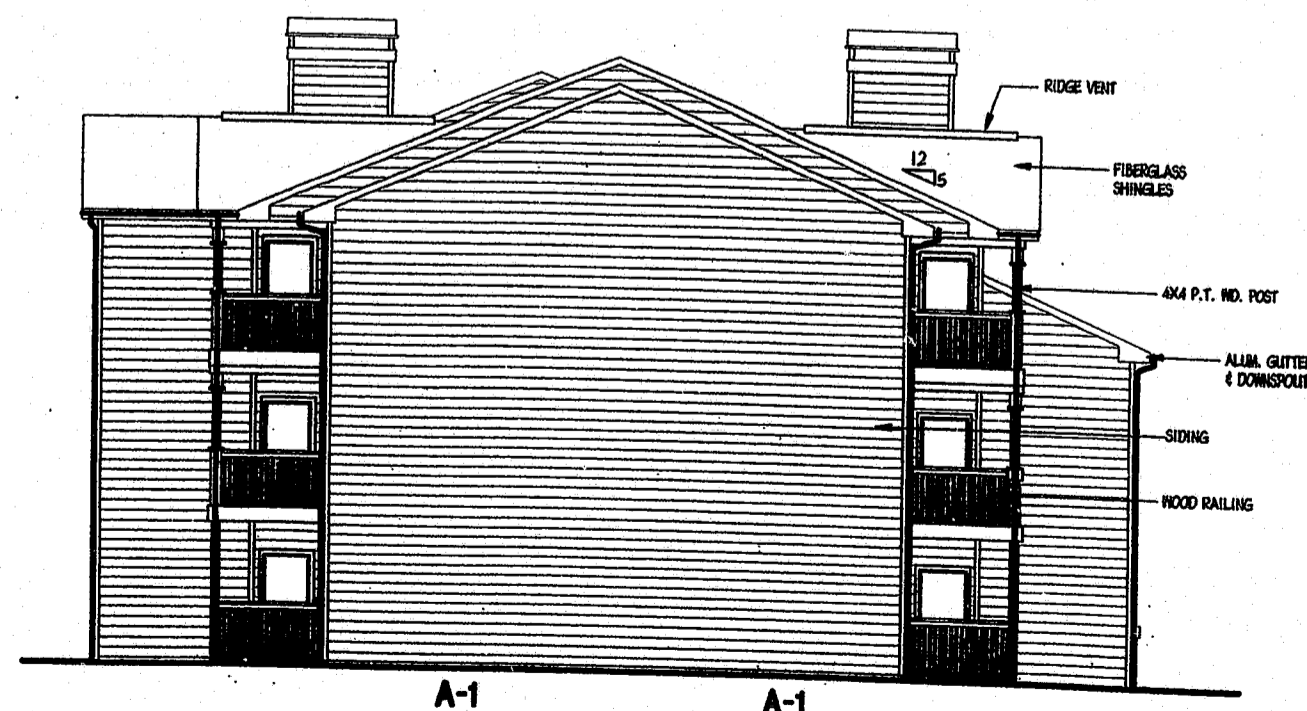


Note: Colors TYP. FOR ALL BLDGS., ALL ELEVATIONS

**FRONT ELEVATION - BLDG. 1 & 11**  
 SCALE: 1/8"=1'-0"



**REAR ELEVATION - BLDG. 1 & 11**  
 SCALE: 1/8"=1'-0"



**L. END ELEVATION - BLDG. 1 & 11**  
 SCALE: 1/8"=1'-0" R. END SIM. OPP. HAND

**NOTE ON COLORS:**  
 Trim to be painted white  
 Fiberglass shingles to be either Weathered Wood (medium gray-brown) or Charcoal Gray  
 Lapped, horizontal siding to be painted either Light Gray, Taupe or Beige

98-57-244  
**APPROVED**  
 12-1-99  
 TM 1-19-99