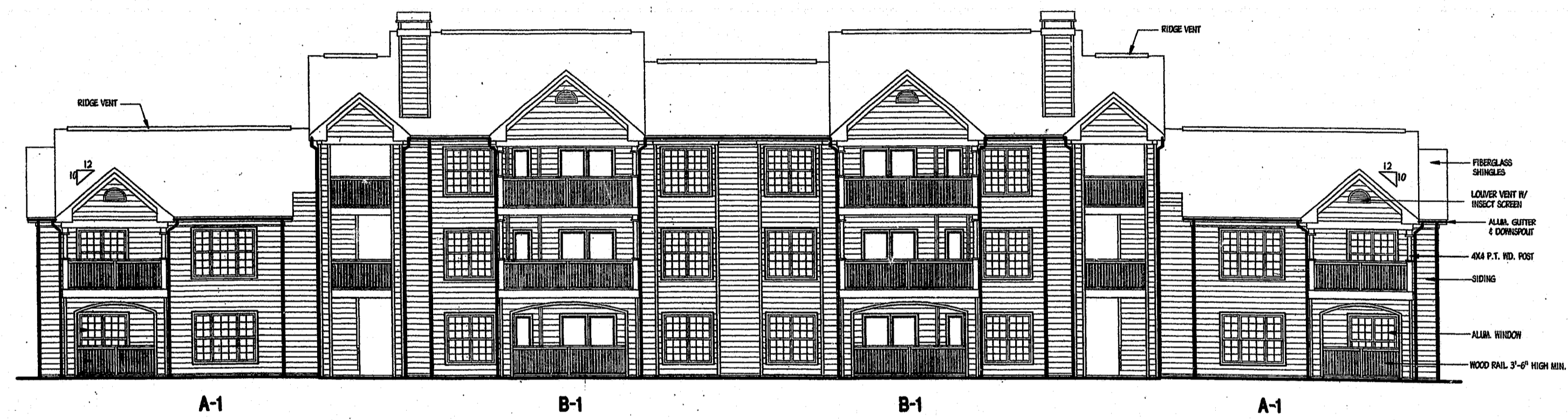
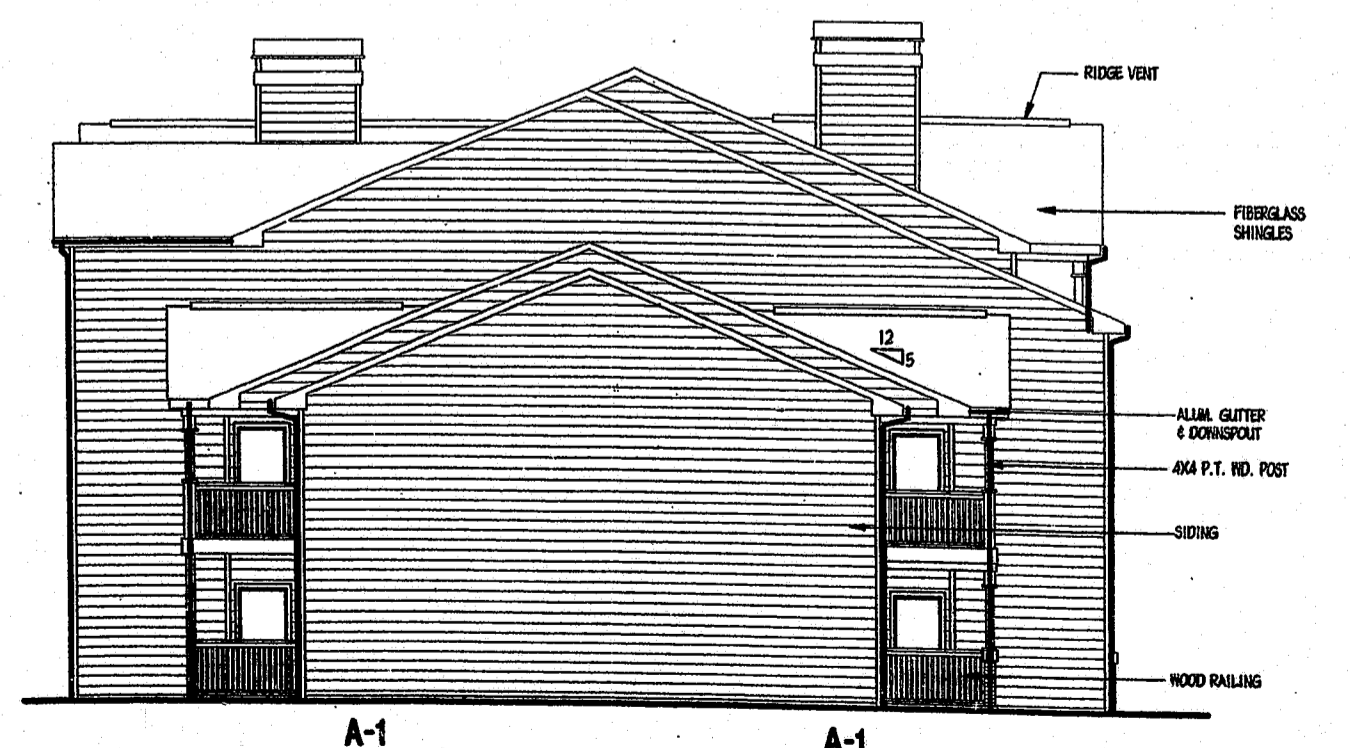


1
A19
FRONT ELEVATION - BLDGS. 2 & 10
SCALE: 1/8"=1'-0"



2
A19
REAR ELEVATION - BLDGS. 2 & 10
SCALE: 1/8"=1'-0"



3
A19
L. END ELEVATION - BLDG. 2 & 10
SCALE: 1/8"=1'-0" R. END SIM. OPP. HAND

98-52-244
APPROVED
82 1-18-99
TM 1-19-99