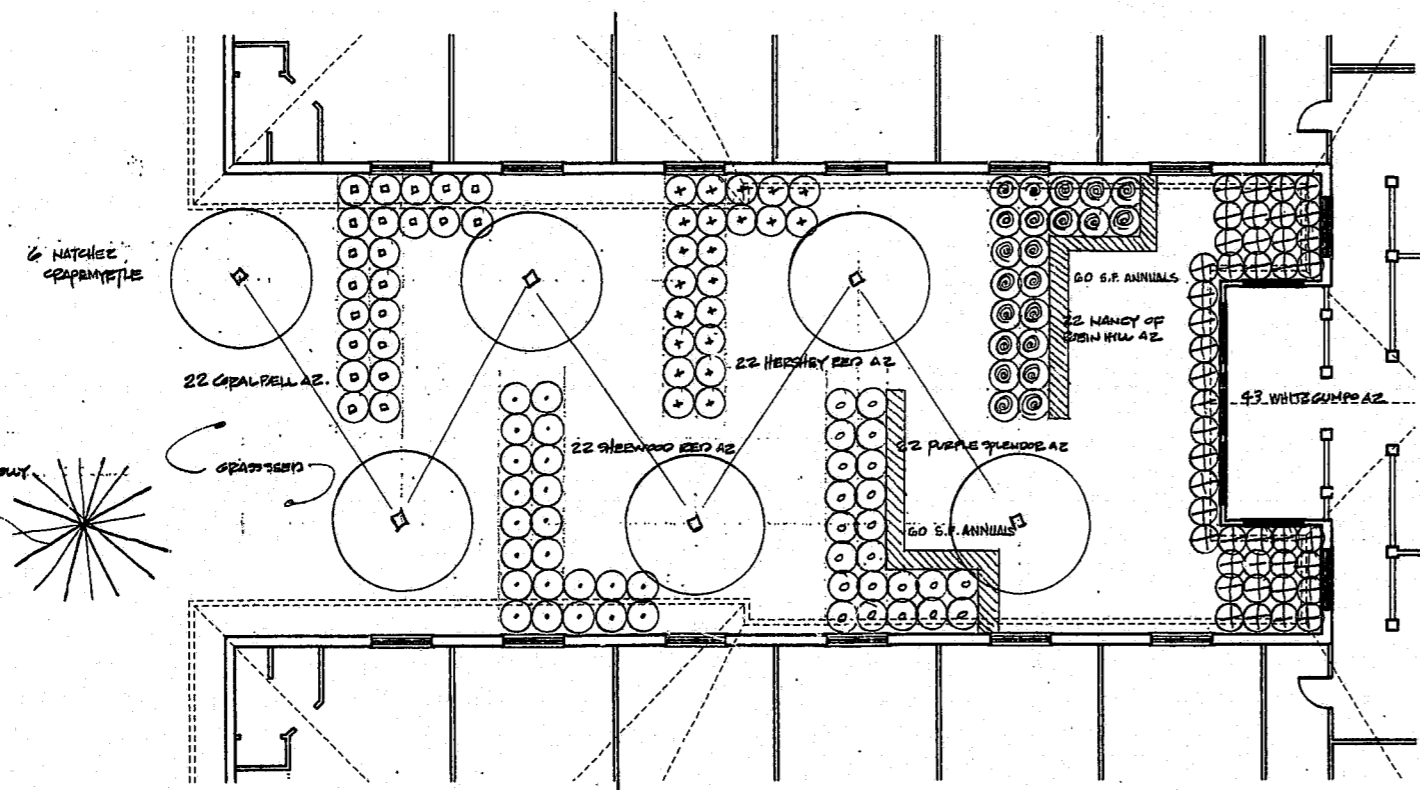


**Assisted Living Viewyard # 1**

NOTES: PLANT ALL AREAS IN 1'-0" WT. TOPSOIL BEDS OF 50/50 GRAPHER MIX. FINISH GRADING WILL BE REQ'D. SEE NOTE #1 AT SHIT.



1" = 10'



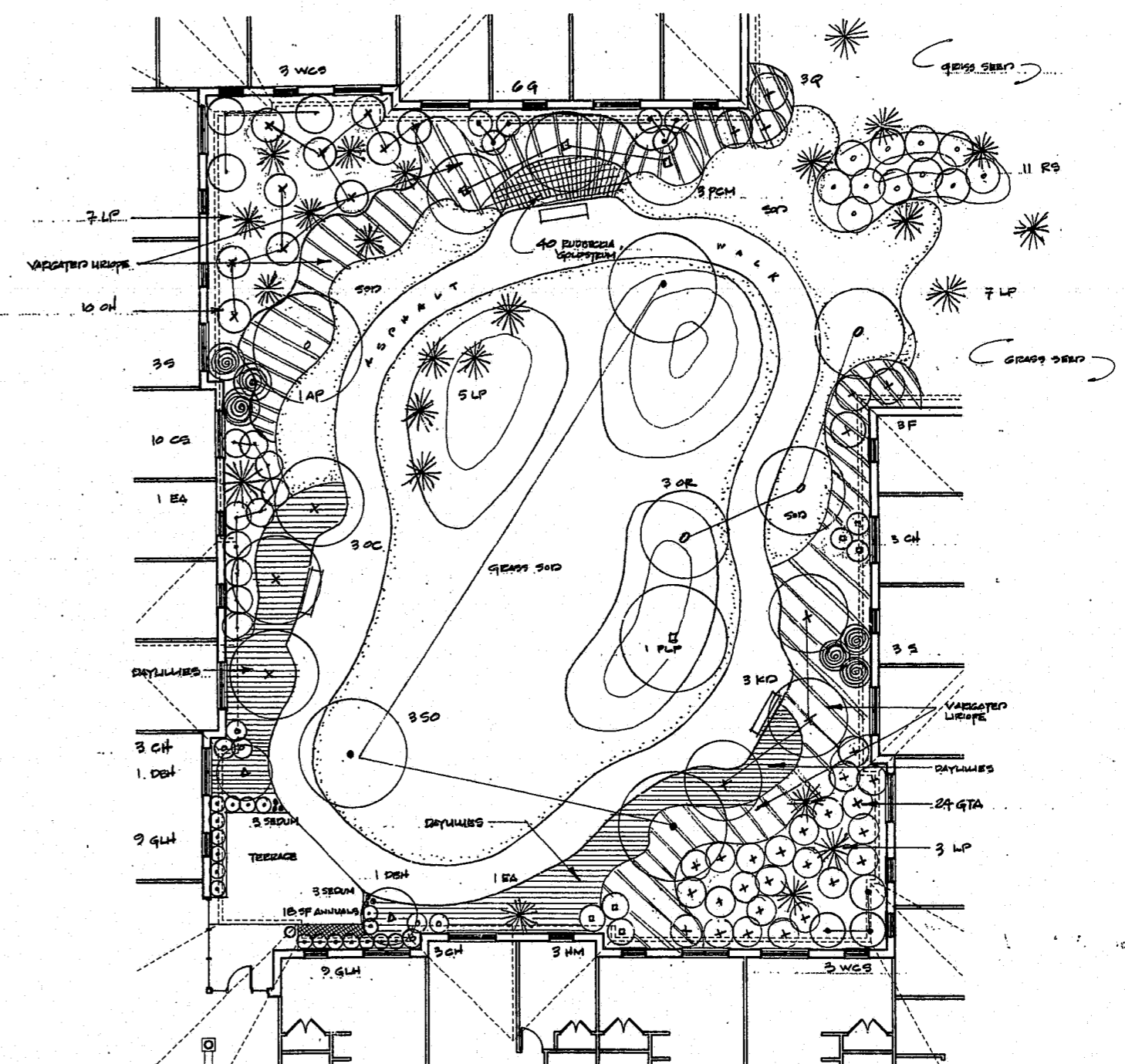
**Assisted Living Viewyard #2**

NOTES: PLANT ALL AREAS IN 1'-0" WT. TOPSOIL BEDS OF 50/50 GRAPHER MIX. FINISH GRADING WILL BE REQ'D. SEE NOTE #1 AT SHIT.



1" = 10'

SHRUBS		TREES	
KEY	PLANT	KEY	PLANT
WCS	WEST COAST SAMP	LF	LOBLOTT PINE
CH	CORONADO HYDRANGEA	EA	EMERALD ARBORETR
SL	SLIP LAUREL	DBH	DIABLO REDWOOD
CS	CANELEAF SINGAPORE	TR	TREE FERN
CH	CORONADO HYDRANGEA	RFH	ROTHMAG CORYMPHUS
GLH	GREEN LOSTRIB HAY	AP	APRICOT TREE
HM	HYDRANGEA MACROPHYLLA	OC	ORANGE GARDEN
GTA	GRASS TREE	SL	SILVER LEAF
RS	REDWOOD SPIREA	SP	SPYRAL
A&O	ANDROMEDA	PL	PINK BLOSSOM
			"REDWOOD"



NOTE #1: FINISH GRADING WILL BE REQUIRED IN ALL 3 OF THESE COURTYARDS TO COORDINATE PLANT HEIGHTS WITH SURFACE DRAINAGE.

**Assisted Living Courtyard**



1" = 10'

48-69-015  
**APPROVED**  
 28 7-21-98  
 TM 7-21-98