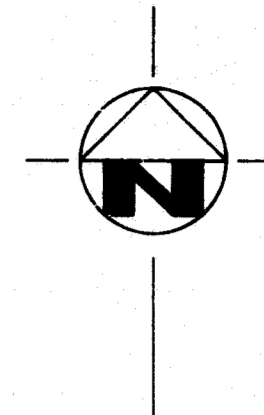
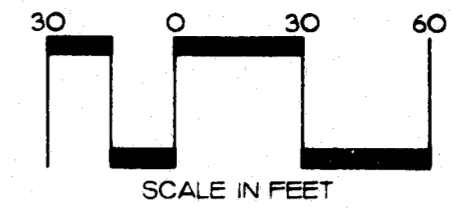
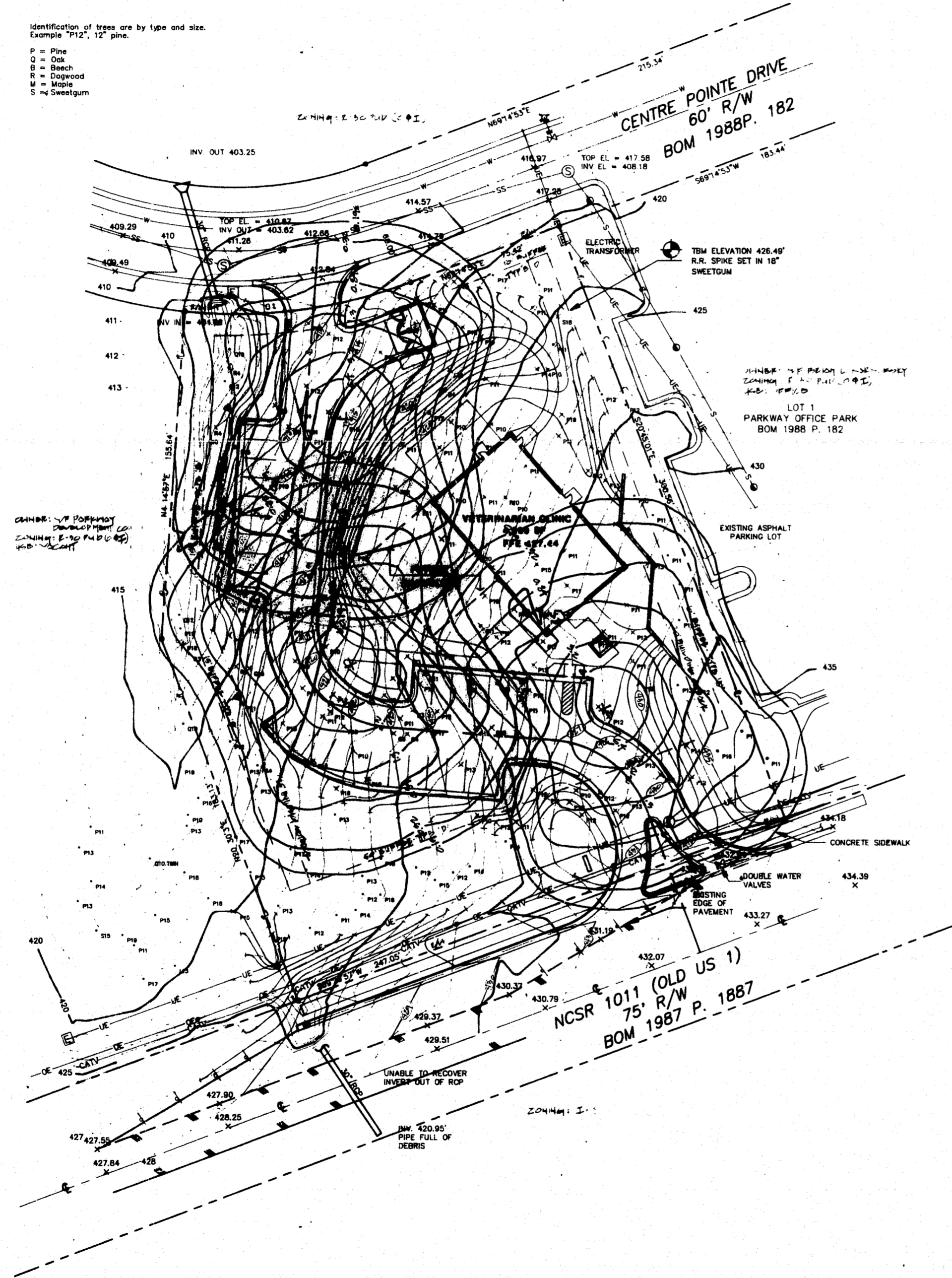


CURVE	RADIUS	LENGTH	TANGENT	CHORD	BEARING	DELTA
C1	235.72	108.89'				

Identification of trees are by type and size.  
Example "P12", 12" pine.

- P = Pine
- O = Oak
- B = Beech
- R = Dogwood
- M = Maple
- S = Sweetgum



**SITE LIGHTING**

SYMBOL	FIXTURE
+	400 WATT METAL HALIDE FIXTURE ON 25' POLE

**NOTES**

- 1) THIS PLAN IS DIAGRAMMATIC ONLY. LUMINAIRE AND POLE LOCATIONS AS SHOWN MAY BE MODIFIED AS NECESSARY ACCOMMODATE TOPOGRAPHY, TREES, AND UTILITIES. SUBMIT REVISED LOCATIONS TO LANDSCAPE ARCHITECT FOR APPROVAL PRIOR TO CONSTRUCTION.
- 2) ALL WORK REQUIRED FOR THE INSTALLATION OF LUMINAIRES, POLES, AND ASSOCIATED ELECTRICAL SERVICES SHALL MEET ALL APPLICABLE LOCAL, STATE, AND FEDERAL CODES AND REQUIREMENTS.

REVISIONS  
 1. 10/11/93 Rev  
 to Job, 1993

**GEORGE FINCH, LANDSCAPE ARCHITECT, P.A. / LANDSCAPE ARCHITECTURE**  
 601 OBERLIN ROAD, SUITE 200  
 RALEIGH, NORTH CAROLINA 27605  
 919/853-1212

A PROJECT BY THE CENTRE GROUP  
**PARKWAY ANIMAL HOSPITAL**  
 NCSR 1011 (OLD U.S. 1)  
 CARY, NORTH CAROLINA



**SITE LIGHTING PLAN**  
 SCALE: 1" = 30'-0"

THESE PLANS ARE PREPARED FOR REVIEW AND PERMITTING BY THE LOCAL AUTHORITIES HAVING JURISDICTION OVER APPLICABLE PORTIONS OF THE WORK, AND AS SUCH ARE NOT RELEASED FOR CONSTRUCTION UNTIL SO NOTED.

DRAWN BY: ABC  
 CHECKED BY: GMP  
 PROJECT NO. 93-37  
 DATE: 29 DEC 1993  
**L-4**  
 SHEET OF