

© JERRY TURNER & ASSOCIATES, INC. THIS DOCUMENT IS THE PROPERTY OF JERRY TURNER & ASSOCIATES. ALL RIGHTS ARE RESERVED AND ANY POSSESSION, REPRODUCTION, OR OTHER USE OF THIS DOCUMENT WITHOUT THE PRIOR PERMISSION OF JERRY TURNER & ASSOCIATES IS EXPRESSLY PROHIBITED.

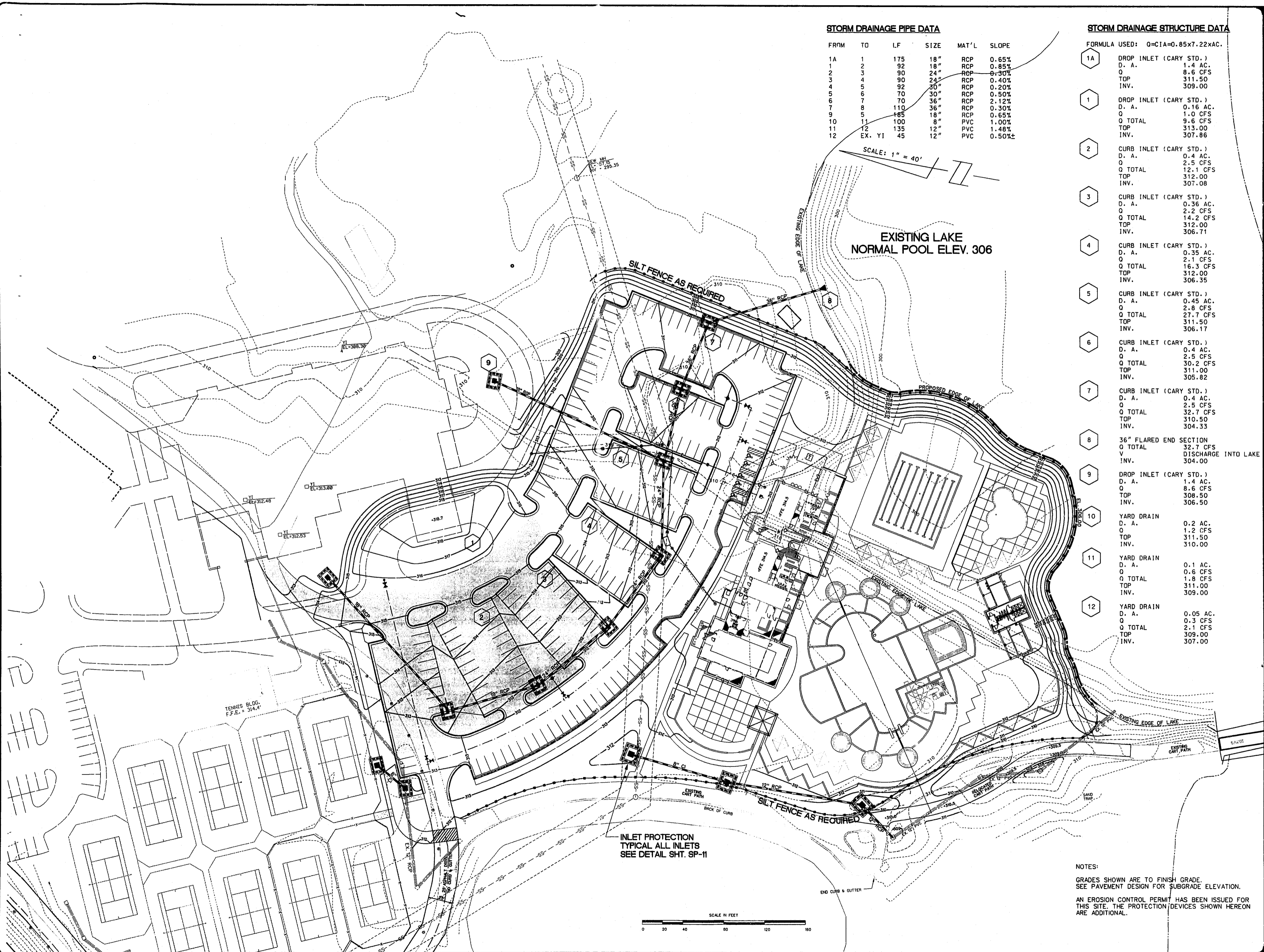
**STORM DRAINAGE PIPE DATA**

FROM	TO	LF	SIZE	MAT'L	SLOPE
1A	1	175	18"	RCP	0.65%
1	2	92	18"	RCP	0.85%
2	3	90	24"	RCP	0.30%
3	4	90	24"	RCP	0.40%
4	5	92	30"	RCP	0.20%
5	6	70	30"	RCP	0.50%
6	7	70	36"	RCP	2.12%
7	8	110	36"	RCP	0.30%
9	5	185	18"	RCP	0.65%
10	11	100	8"	PVC	1.00%
11	12	135	12"	PVC	1.48%
12	EX. YI	45	12"	PVC	0.50%

**STORM DRAINAGE STRUCTURE DATA**

FORMULA USED:  $Q=CIA=0.85 \times 7.22 \times AC.$

1A	DROP INLET (CARY STD.)	D. A.	1.4 AC.	Q	8.6 CFS	TOP	311.50	INV.	309.00		
1	DROP INLET (CARY STD.)	D. A.	0.16 AC.	Q	1.0 CFS	Q TOTAL	9.6 CFS	TOP	313.00	INV.	307.86
2	CURB INLET (CARY STD.)	D. A.	0.4 AC.	Q	2.5 CFS	Q TOTAL	12.1 CFS	TOP	312.00	INV.	307.08
3	CURB INLET (CARY STD.)	D. A.	0.36 AC.	Q	2.2 CFS	Q TOTAL	14.2 CFS	TOP	312.00	INV.	306.71
4	CURB INLET (CARY STD.)	D. A.	0.35 AC.	Q	2.1 CFS	Q TOTAL	16.3 CFS	TOP	312.00	INV.	306.35
5	CURB INLET (CARY STD.)	D. A.	0.45 AC.	Q	2.8 CFS	Q TOTAL	27.7 CFS	TOP	311.50	INV.	306.17
6	CURB INLET (CARY STD.)	D. A.	0.4 AC.	Q	2.5 CFS	Q TOTAL	30.2 CFS	TOP	311.00	INV.	305.82
7	CURB INLET (CARY STD.)	D. A.	0.4 AC.	Q	2.5 CFS	Q TOTAL	32.7 CFS	TOP	310.50	INV.	304.33
8	36" FLARED END SECTION	Q TOTAL	32.7 CFS	V	DISCHARGE INTO LAKE	INV.	304.00				
9	DROP INLET (CARY STD.)	D. A.	1.4 AC.	Q	8.6 CFS	TOP	308.50	INV.	306.50		
10	YARD DRAIN	D. A.	0.2 AC.	Q	1.2 CFS	TOP	311.50	INV.	310.00		
11	YARD DRAIN	D. A.	0.1 AC.	Q	0.6 CFS	Q TOTAL	1.8 CFS	TOP	311.00	INV.	309.00
12	YARD DRAIN	D. A.	0.05 AC.	Q	0.3 CFS	Q TOTAL	2.1 CFS	TOP	309.00	INV.	307.00



**JTA**  
**JERRY TURNER & ASSOCIATES**

LANDSCAPE ARCHITECTURE  
 LAND PLANNING  
 ENVIRONMENTAL DESIGN

905 JONES FRANKLIN ROAD  
 RALEIGH, NORTH CAROLINA 27606  
 (919) 851-7150  
 62 S.E. 6TH AVENUE  
 DELRAY BEACH, FLORIDA 33483  
 (407) 276-0453

PROJECT  
**PRESTONWOOD COUNTRY CLUB EXPANSION**

PHASE I  
 (SWIM COMPLEX)

PRESTONWOOD COUNTRY CLUB, INC.  
 CARY, NORTH CAROLINA

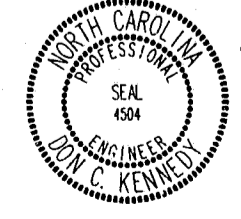
REVISIONS  
 REVISED 12/21/95

**BNK**  
 BASS, NIXON & KENNEDY, INC.  
 CONSULTING ENGINEERS  
 7416 CHAPEL HILL ROAD  
 RALEIGH, NC 27607  
 919 851-4422

DRAWN \_\_\_\_\_ CHECKED \_\_\_\_\_  
 BCBAEB DCK  
 SCALE \_\_\_\_\_ DATE \_\_\_\_\_  
 1" = 40'  
 TITLE 10-27-95

**EROSION CONTROL PLAN**

FILE NO. \_\_\_\_\_ JOB NO. \_\_\_\_\_  
 SEAL \_\_\_\_\_ SHEET NO. \_\_\_\_\_



**SP-7**

NOTES:  
 GRADES SHOWN ARE TO FINISH GRADE.  
 SEE PAVEMENT DESIGN FOR SUBGRADE ELEVATION.  
 AN EROSION CONTROL PERMIT HAS BEEN ISSUED FOR THIS SITE. THE PROTECTION DEVICES SHOWN HEREON ARE ADDITIONAL.