

REVISIONS:  
 △ PER CITY 1ST REVIEW  
 JULY 10, 1995  
 △ PER CCA REQUEST  
 JAN. 26, 1996

LANDSCAPE ARCHITECTURE  
 PLANNING  
 ENVIRONMENTAL DESIGN  
 1140 KILDAIRE FARM ROAD  
 SUITE 305, CARY, NC 27511  
 (919) 460-7274 PH  
 (919) 460-9410 FX

*Atashi Associates*

PROJECT: SHEET TITLE:

**DORCAS THRIFT SHOP**  
 CHRISTIAN COMMUNITY IN ACTION (CCA)

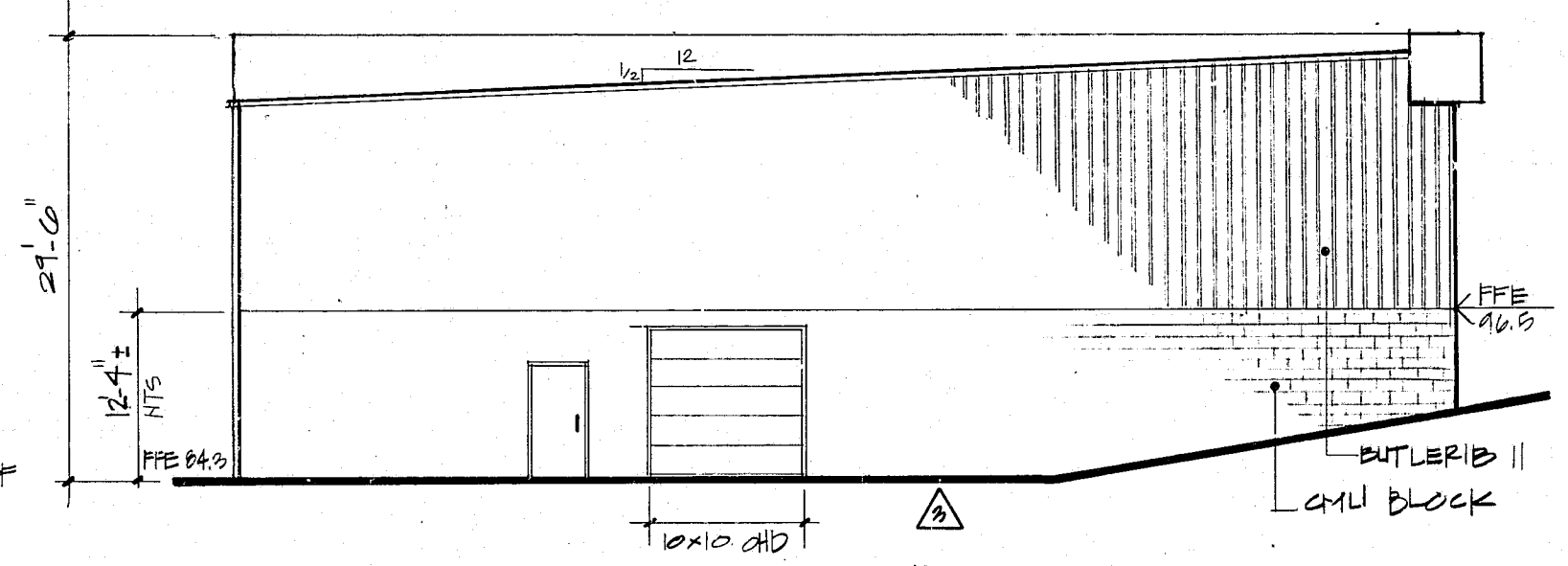
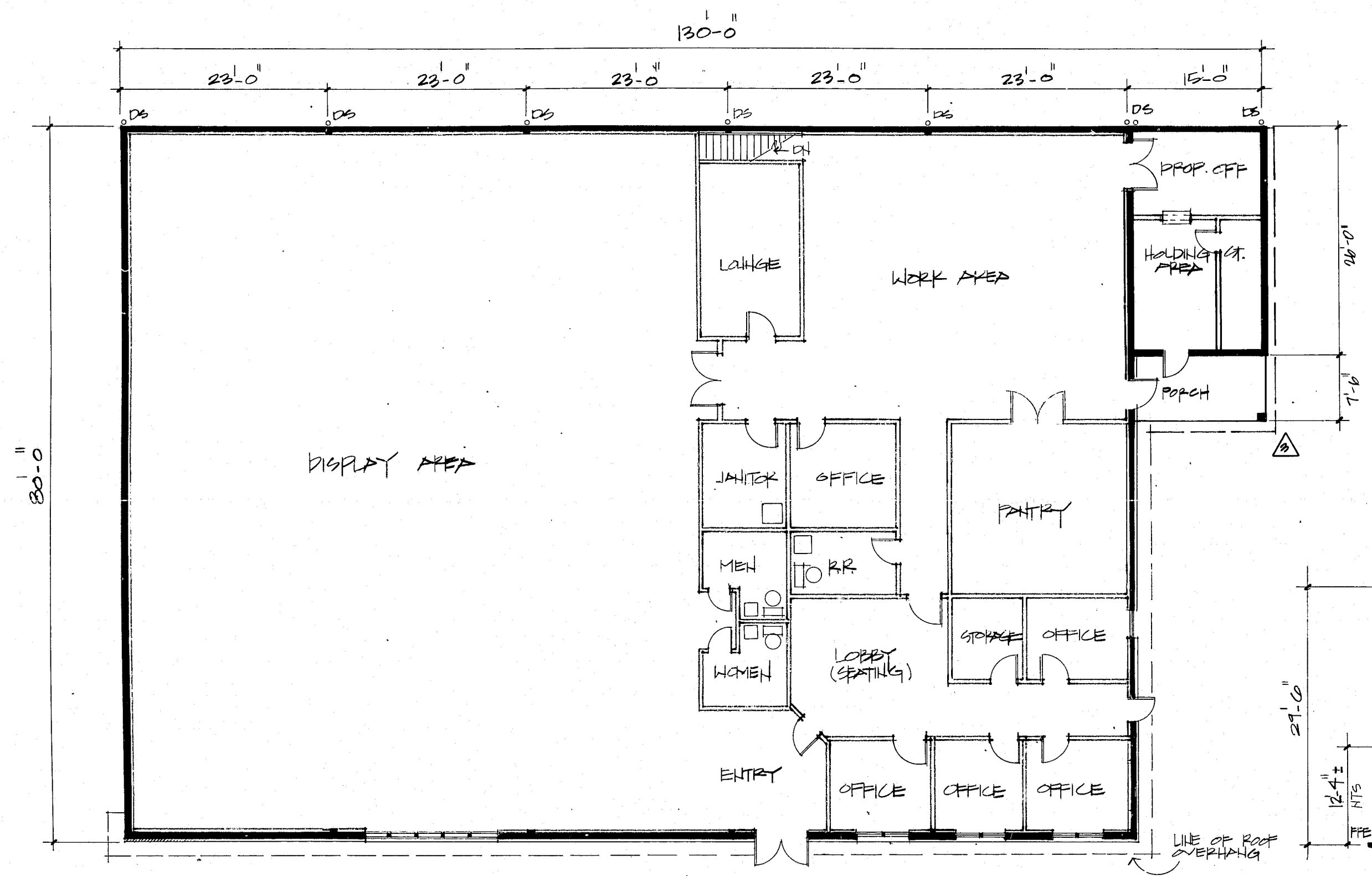
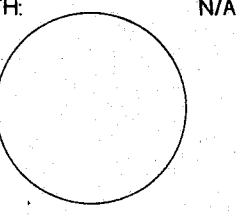
**FLOOR PLAN  
 ELEVATION**

DATE: JUNE 28, 1995  
 SCALE: 1/8" = 1'-0"  
 DRAWN BY: AA  
 CHECKED BY: AA

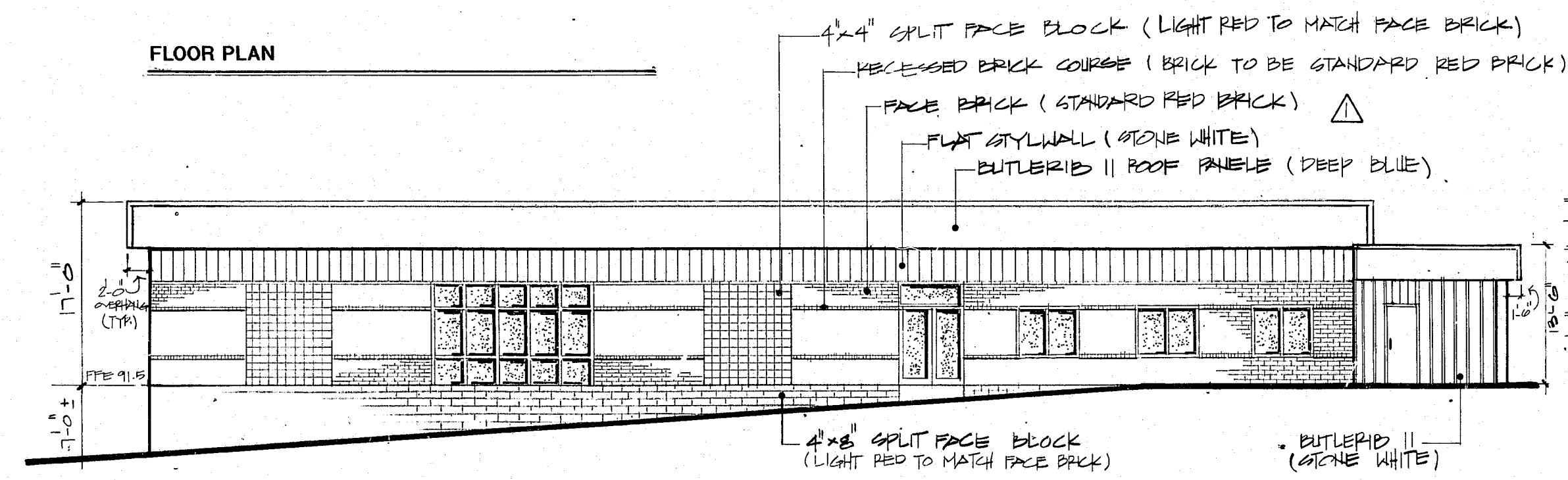
SHEET #:

**4**

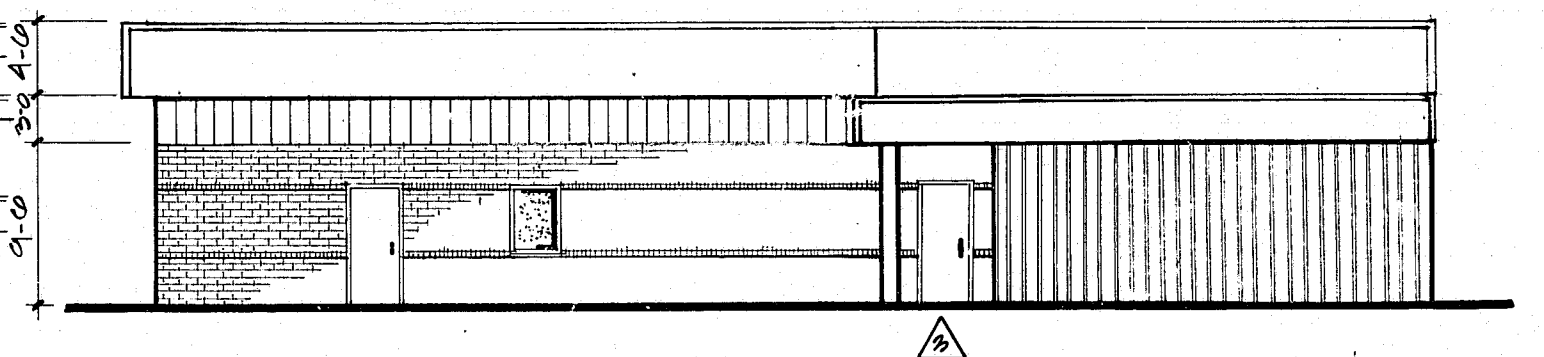
OF 5  
 NORTH: N/A



LEFT SIDE ELEVATION



FRONT ELEVATION



RIGHT SIDE ELEVATION

