

00-SP-225

STERLING REGENCY

PARK ADD

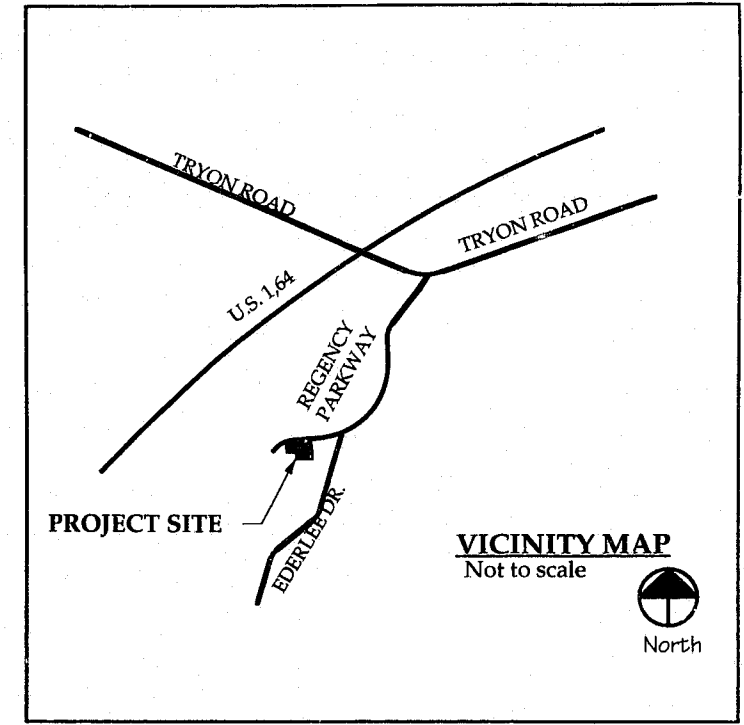
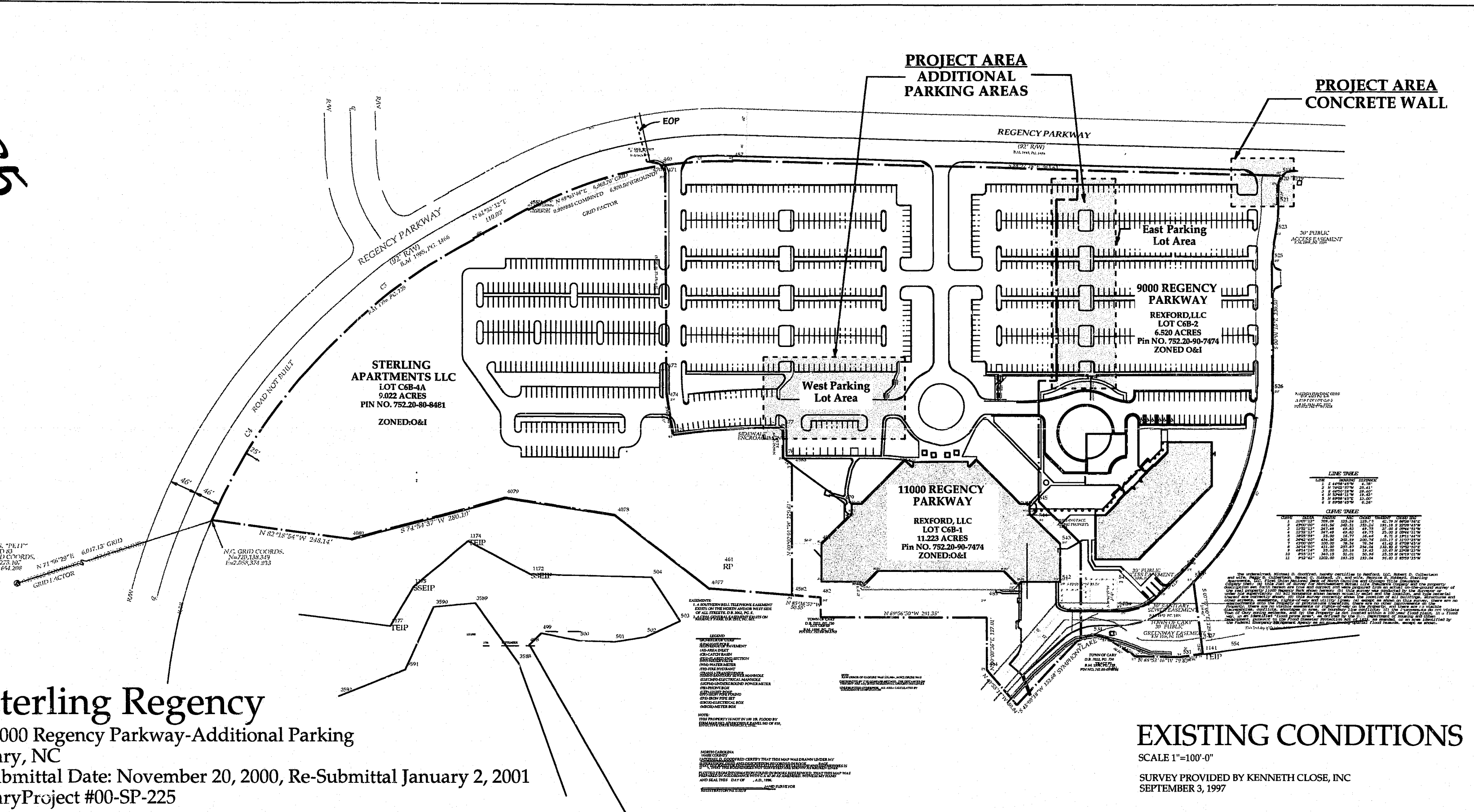
Owner
Rexford, LLC

Developer
Grubb Management, Inc.
1100 Regency, Suite 101
Cary, NC 27511

Consultants
Landscape Architects/Planners
Reynolds & Jewell
128E. Hargett Street
Raleigh, NC 27601
(919) 821-5074

Sterling Regency
11000 Regency Parkway-Additional Parking
Cary, NC
Submittal Date: November 20, 2000, Re-Submittal January 2, 2001
Cary Project #00-SP-225

EXISTING CONDITIONS
SCALE 1"=100'-0"
SURVEY PROVIDED BY KENNETH CLOSE, INC
SEPTEMBER 3, 1997



Contents	
Cover Sheet	Cover
Overall Site Plan	L-1
Layout and Grading Enlargement Plans	L-2
Overall Planting Plan	L-3
Details	L-4

00-SP-225

1-2-2001

1/9/01

DEC: 1-12-2001

ORIGINAL
"APPROVED PLAN"

HL