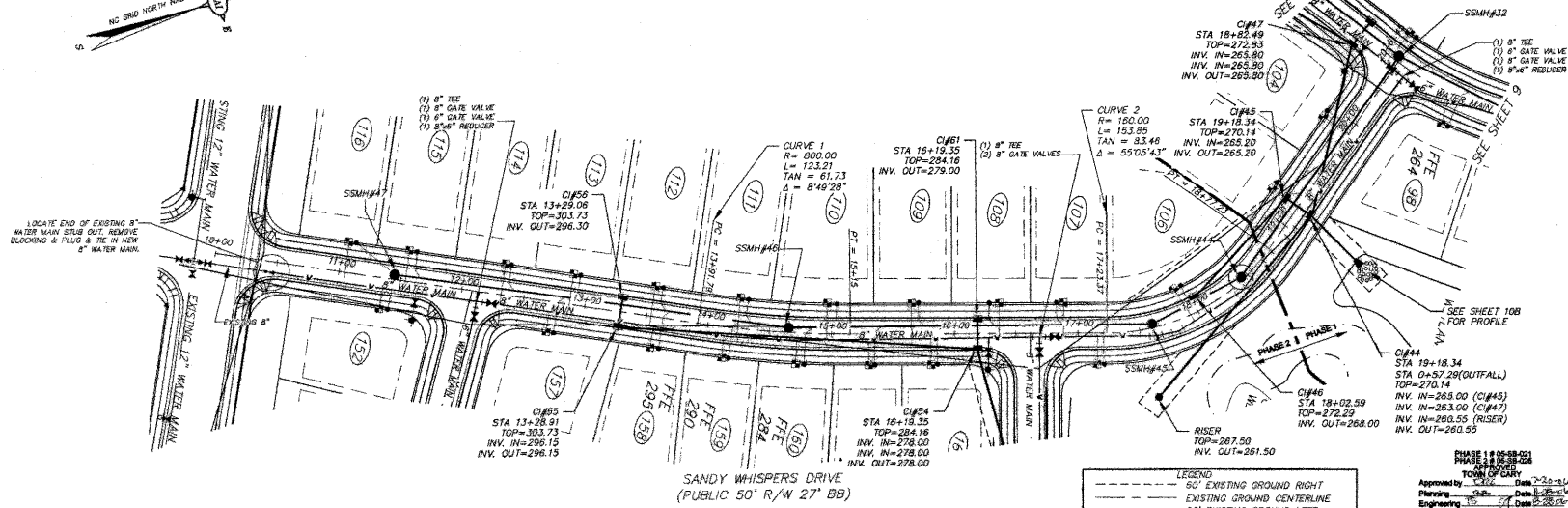


STORM TABLE		STORM TABLE		STORM TABLE		STORM TABLE	
PIPE RUN	LENGTH/SIZE	PIPE RUN	LENGTH/SIZE	PIPE RUN	LENGTH/SIZE	PIPE RUN	LENGTH/SIZE
C1#1 TO FESS3	120.25 24	C1#1 TO FESS3	143.11 24	V1#7 TO FESS3	42.28 30	C1#67 TO FESS2	43 30
C1#2 TO C1#1	37.27 24	C1#2 TO C1#1	128.83 18	V1#8 TO V1#7	136.88 30	C1#68 TO C1#67	24.99 30
C1#3 TO C1#2	26.81 18	C1#3 TO C1#2	41.88 18	C2#2 TO V1#8	134.00 30	V1#1 TO C1#68	43.11 30
C1#4 TO C1#3	164.80 18	C1#4 TO C1#3	26.28 15	C2#1 TO C1#3	63.18 30	V1#2 TO V1#1	126.12 30
C1#5 TO C1#4	89.79 18	C1#5 TO C1#4	161.31 18	C2#2 TO C2#1	102.02 30	STAMP1 TO V1#2	203.77 24
C1#6 TO FESS3	18.85 18	C1#6 TO C1#5	142.73 18	C2#1 TO C2#2	284 15	STAMP2 TO STAMP1	87.18 24
C1#8 TO C1#7	27.84 18	C1#7 TO FESS3	87.28 42	C2#2 TO C2#3	248.71 30	C1#69 TO STAMP12	112.13 24
C1#9 TO FESS6	183.61 24	C1#8 TO C1#7	24.28 15	C2#3 TO C2#4	55.27 24	C1#70 TO C1#69	25.75 24
C1#10 TO C1#9	217.25 15	C1#9 TO C1#8	108.41 15	C2#4 TO C2#5	132.72 24	V1#2A TO C1#69	54.17 18
C1#11 TO C1#10	26.28 15	C1#10 TO C1#9	138.01 24	C2#5 TO C2#6	107.59 24	STAMP13 TO V1#2A	62.80 18
C1#12 TO C1#11	39.4 18	C1#11 TO C1#10	35.48 18	C2#6 TO C2#7	25.38 15	V1#3 TO STAMP13	23.44 18
C1#13 TO C1#12	26.28 15	C1#12 TO C1#11	26.8 15	C2#7 TO C2#8	25.38 15	V1#2A TO C1#68	122.75 18
C1#14 TO C1#13	26.28 15	C1#13 TO C1#12	22.73 18	V1#4 TO C2#8	80.58 15	C1#65 TO C1#64	389.73 18
C1#15 TO C1#14	26.28 15	C1#14 TO C1#13	187.92 42	C2#8 TO C2#9	28.22 15	C1#66 TO C1#65	28.22 15
		RISER TO C1#14	136.82 18	C1#15 TO C1#14	36.48 15	C1#71 TO V1#4	187.89 18
						C1#72 TO C1#71	81.89 18
						STAMP14 TO C1#72	20.7 18
						STAMP15 TO FESS#12	23.23 18
						C1#73 TO STAMP15	105.34 18
						C1#74 TO C1#73	25.99 18
						C1#75 TO C1#74	112.48 18
						C1#76 TO FESS#11	30.59 24
						C1#77 TO C1#76	159.4 18
						C1#78 TO C1#77	178.44 18
						C1#79 TO C1#78	24.51 18
						C1#80 TO C1#79	25.14 18
						C1#81 TO C1#80	34.18 18
						STAMP16 TO FESS#13	210.98 18
						C1#82 TO STAMP16	37.52 18



DAVID P. RIVERS
7932

Rivers
Engineers
Planners
Surveyors

157 East Second Street
Greensboro, NC 27405 (336) 782-4136

6413 Falls of Hills Road, Suite D
Raleigh, NC 27618 (919) 848-5347

LENNAR CAROLINAS, LLC
 STONEMASTER SUBDIVISION SF-2 (PHASE 1, PHASE 2)
SANDY WHISPERS DR.
 STATIONS 10+00 THRU 20+81.45

Approved by: [Signature] Date: 2-23-14
 Planning: [Signature] Date: 2-23-14
 Engineering: [Signature] Date: 2-23-14

SURVEY CHS: []
 DESIGN: []
 CHECK: []
 DATE: 2/21/14

H. SCALE: 1" = 50'
 V. SCALE: 1" = 5'
 PROJECT NO.: 25084.3
 SHEET: 11

