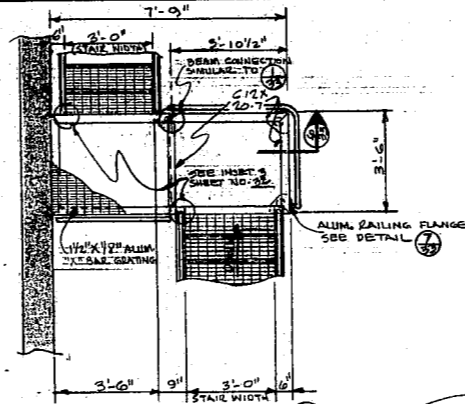
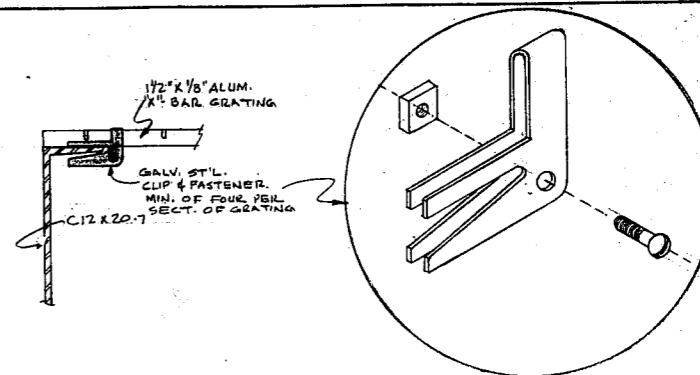


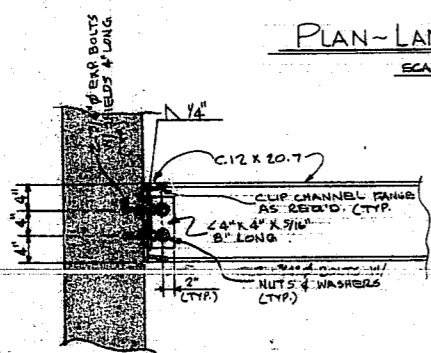
PLAN - LANDING & WALKWAY (A)  
SCALE: 3/8" = 1'-0"



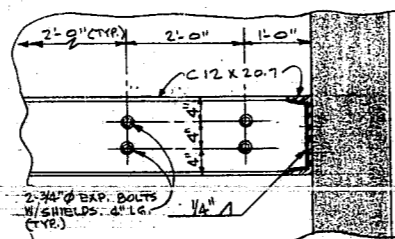
PLAN - STAIR LANDING (B)  
SCALE: 3/8" = 1'-0"



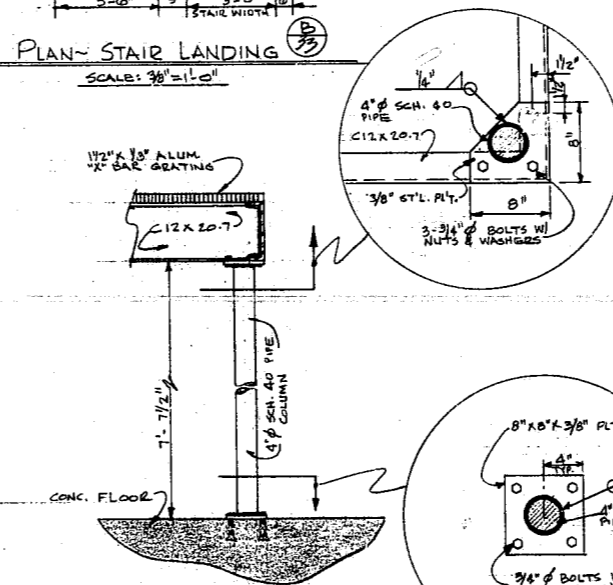
TYPICAL GRATING FASTENER DETAIL  
NO SCALE



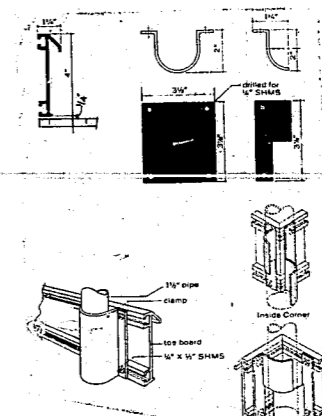
CONNECTION DETAIL (1)  
SCALE: 1" = 1'-0"



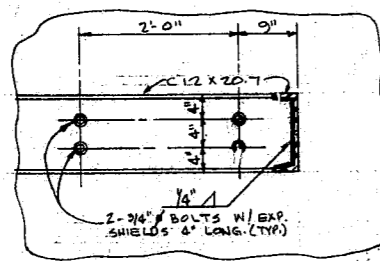
CONNECTION DETAIL (2)  
SCALE: 1" = 1'-0"



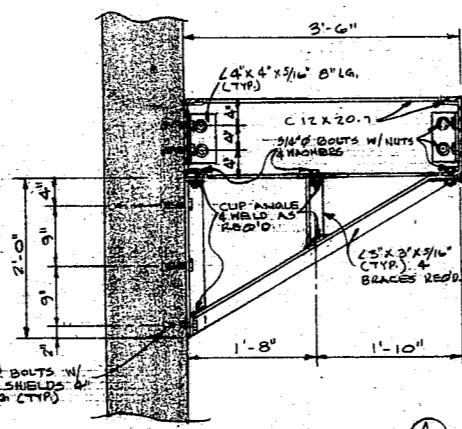
DETAIL (6)  
SCALE: 3/4" = 1'-0"



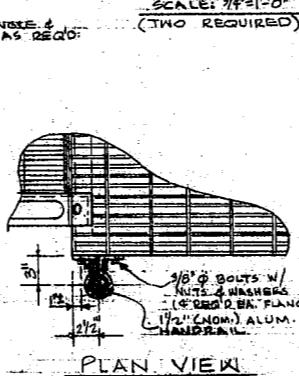
TYP. ALUM. TOE BOARD CONNECTIONS  
NO SCALE



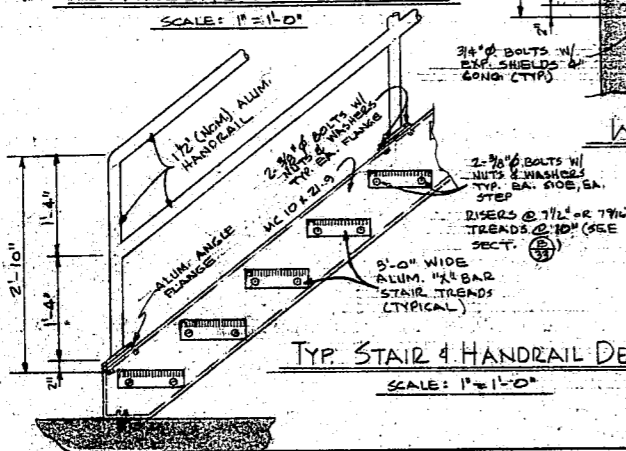
CONNECTION DETAIL (3)  
SCALE: 1" = 1'-0"



WALL BRACKET DETAIL (4)  
SCALE: 1" = 1'-0"

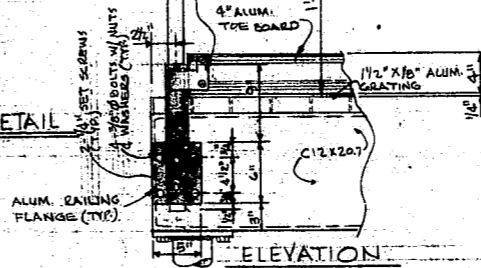


PLAN VIEW

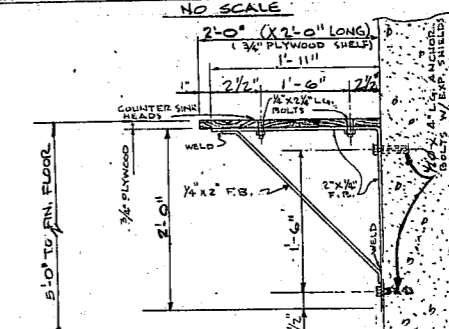


TYP. STAIR HANDRAIL DETAIL (5)  
SCALE: 1" = 1'-0"

ALUM. RAILING FLANGE DETAIL (7)  
SCALE: 1/2" = 1'-0"



ELEVATION



SHelf AND BRACKET DETAIL (9)  
(2 BRACKETS REQ'D)  
NO SCALE

DETAILS			
WASTEWATER IMPROVEMENTS			
TOWN OF CARY			
WAKE COUNTY, NORTH CAROLINA			
MOORE, GARDNER & ASSOCIATES, INC.			
CONSULTING ENGINEERS			
ASHEBORO • GREENSBORO • CARY			
NORTH CAROLINA			
ENGINEER	DATE: 5/22/79	DATE: 5/22/79	DATE: 5/22/79
SEAL	SEAL	SEAL	SEAL
MARK DATE: REVISION	DATE: 4/79	DATE: 5/79	DATE: 5/79
DRAWN BY: JAW	CHECKED BY: JAW	APPROVED BY: JAW	SCALE: NOTED
JOB NO. 2-07175		SHEET 23 OF 42	
DRAWER NO. 10			