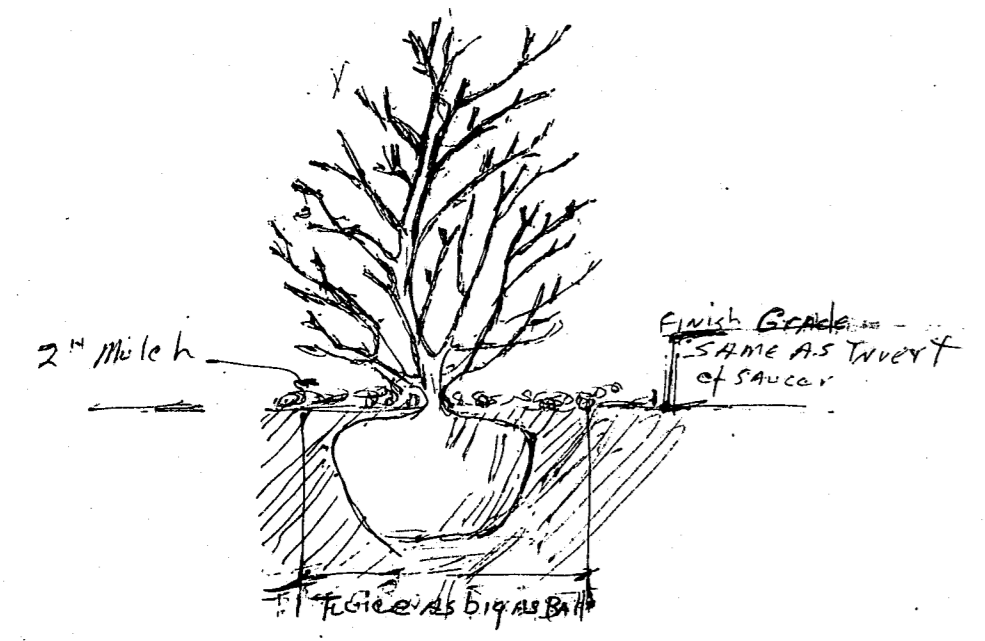


Detail of Tree Planting + Cabling

Note: Cabling is required on all plants over 10' high



Detail of Shrub Planting Not to Scale

Property of
Elizabeth PIPKIN
Rk. 4617 P. 232
Zoned B2

HVAC UNITS TO BE SCREENED IN LIKE MANNER TO THE DUMPSTER SCREENING DETAIL.

Existing Plants:
PRIVET, COMMON, little leaf
MULBERRY

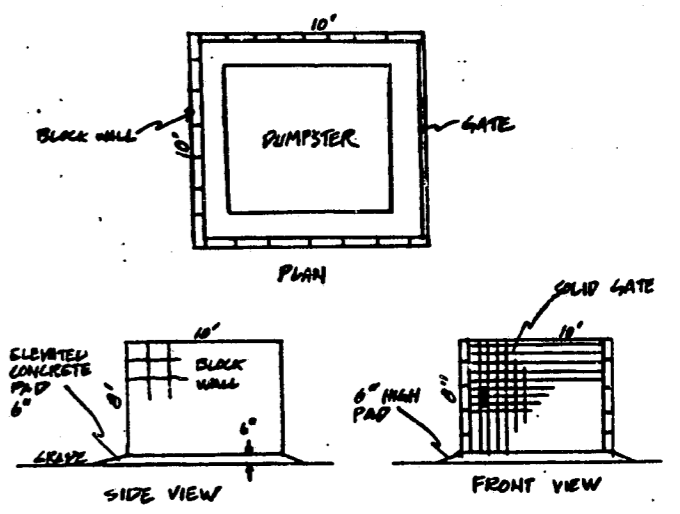
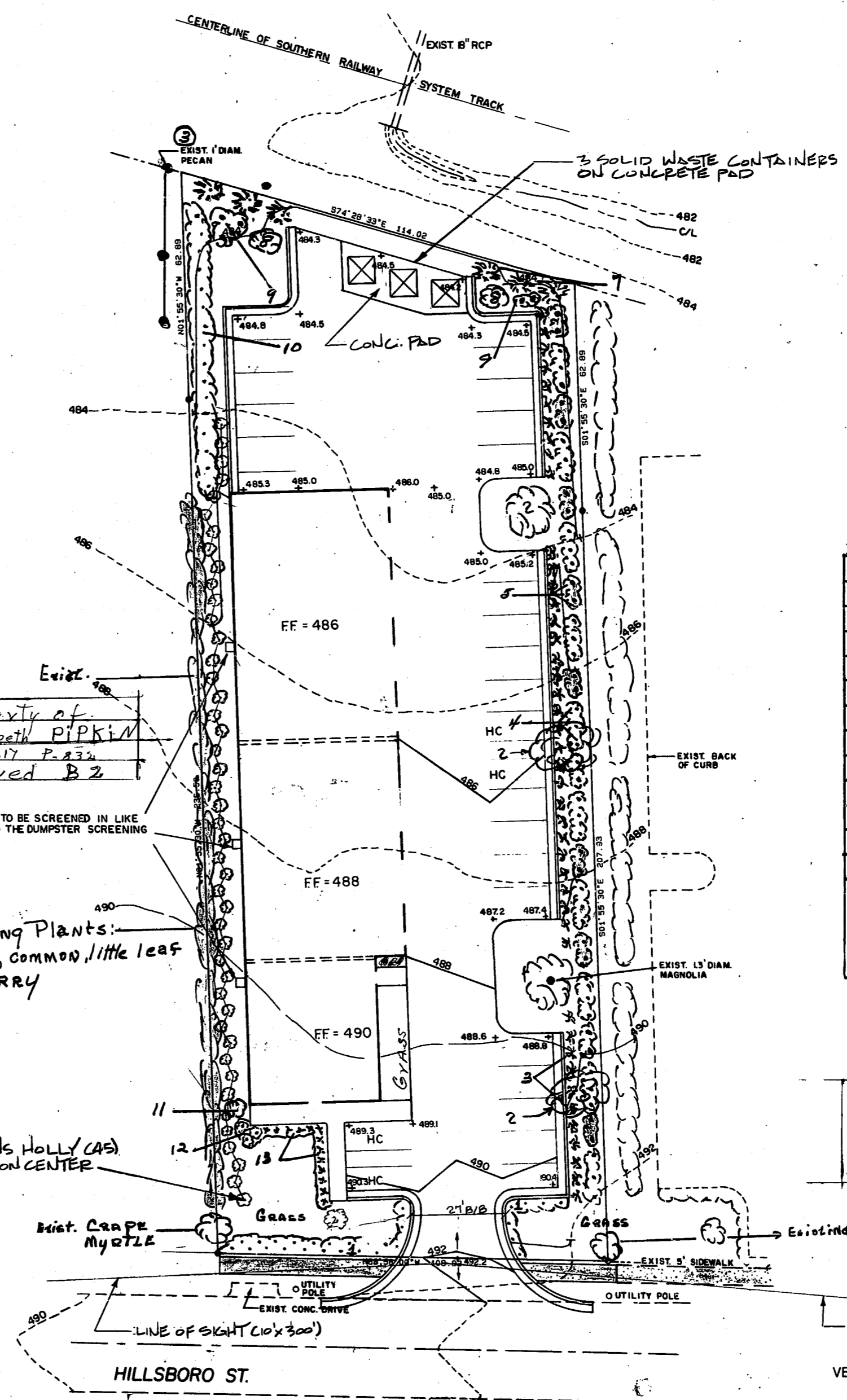
NELLIE STEVENS HOLLY (AS)
5'-6" HEIGHT, 5' ON CENTER

Property of
Leonard Mellich
Zoned B2

The following are the required buffers:

- North: Class 6 to Class 8 (public utility facility) - 30' B type buffer
- South: Class 6 to Hillsboro Street - 30' D type buffer
- East: Class 6 to Class 6 - 10' C type buffer
- West: Class 6 to Class 2 - 50' A type buffer

VEHICULAR SURFACE AREA = 13,850 SQ. FT.

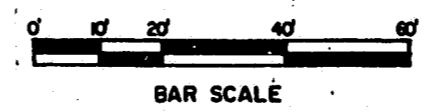


PLANT LIST

	Size of Plants	No. of Plants
1 - Abelia, Dwarf, Sherwoodii	28 3/4"	28
2 - Grape Myrtle, Red Red Maple	4 1/2"	4
3 - Juniper, Blue Rug	44 1/4"	44
4 - Holly, Buysfordi, dwarf	20 1/2"	20
5 - Berberis, Julianae	20 3/4"	20
6 - Magnolia Grandiflora	1 1/2"	1
7 - Leland Cypress	11 5/8"	11
8 - Bradford Pear	2 1/2"	2
9 - Forsythia, Lynwood Gold	5 3/4"	5
10 - Wax Myrtle	16 3/4"	16
11 - Camellia, Sasanqua (low, compact)	1 5/8"	1
12 - Nandina, dwarf, Moon Bay or Harbor	3 3/4"	3
13 - Liriope, variegated	18 1/4"	18

* Note: No 2 - use either Bradford Pear or Red Maple
All plant Areas Mulched

SP-225-A0-94
APPROVED
1000 4-15-94
JMT 4-16-94



SEAL	DATE: 6-30-94	PROPERTY OF LESLIE A. TAYLOR & LOLA G. TAYLOR 214 HILLSBORO STREET CARY, N.C.	SHEET 4
DATE	REVISION	BY	FIELD BK.: 152
DATE	REVISION	BY	FIELD BK.: 152

LANDSCAPE PLAN

DRN. BY: MTB
CHKD. BY: GDW
GLENN D. WARD & ASSOCIATES
CIVIL ENGINEER & LAND SURVEYOR
7404-M CHAPEL HILL RD. RALEIGH, N.C.
PHONE: (919) 851-5339