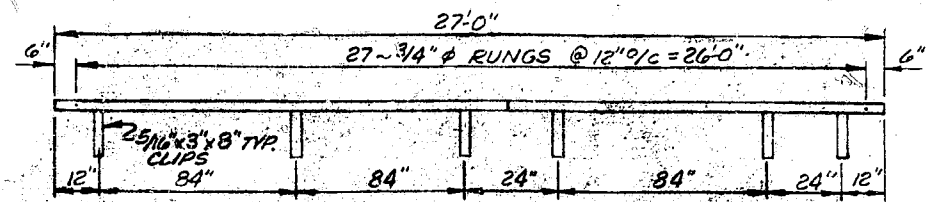
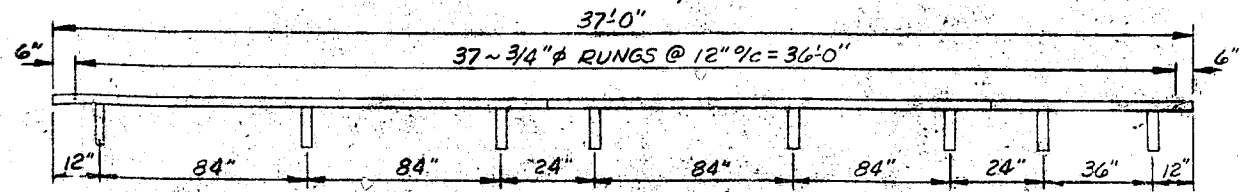


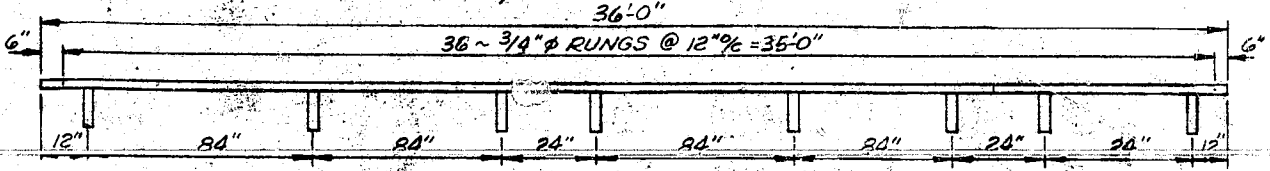
LADDER SECTIONS REQ.
 7~16'-0" LG. SECTIONS
 1~11'-0" LG. SECTIONS
 2~5'-0" LG. SECTIONS
 1~6'-0" LG. SECTIONS



1ST BAY LADDER
 W/ SAF-T-CLIMB



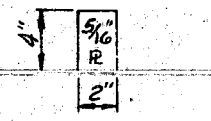
2ND 3RD BAY LADDER
 W/ SAF-T-CLIMB



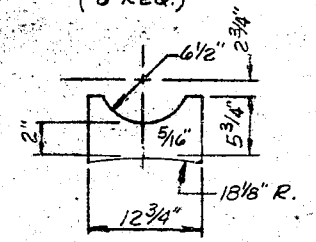
4TH BAY LADDER
 W/ SAF-T-CLIMB

EXTEND LADDER 36"± ABOVE BALCONY

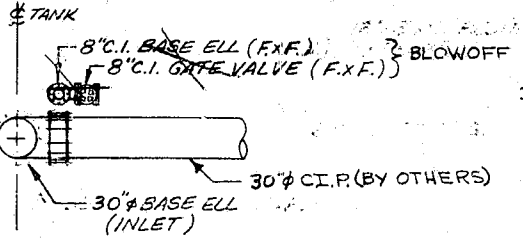
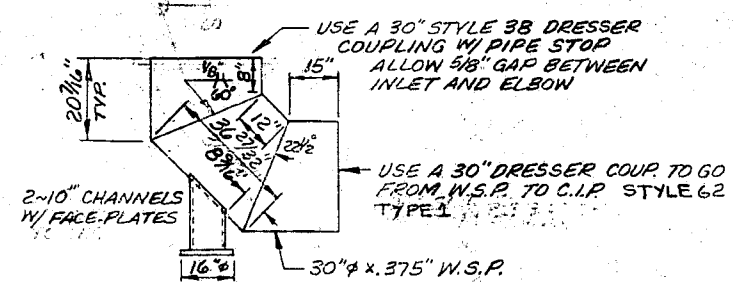
NOTE: SPACE & ALTERNATE CLIPS @ 10'-0" o/c



VERT. CLIP
 (8 REQ.)

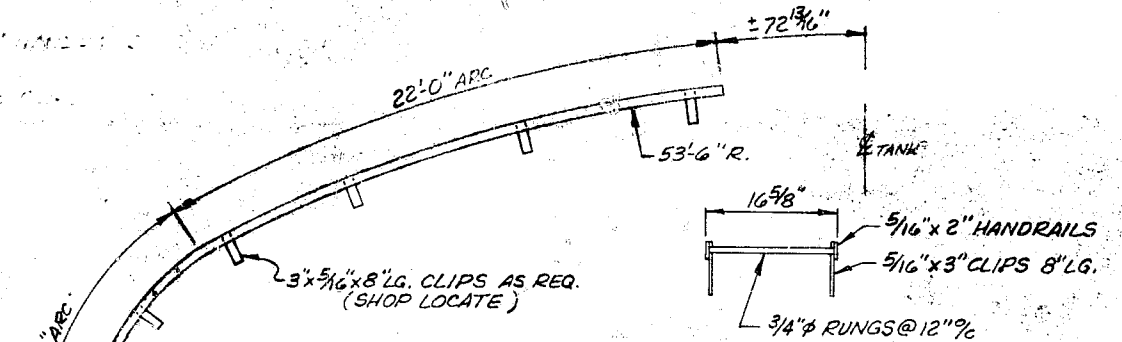
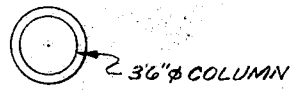
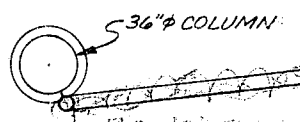
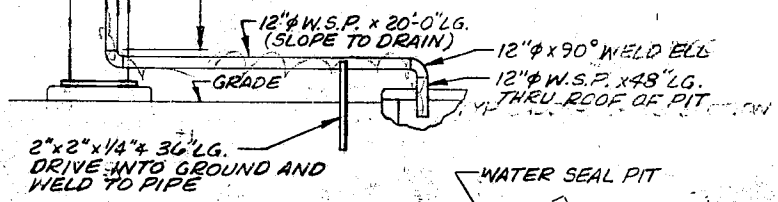


HORIZ. CLIP
 (8 REQ.)

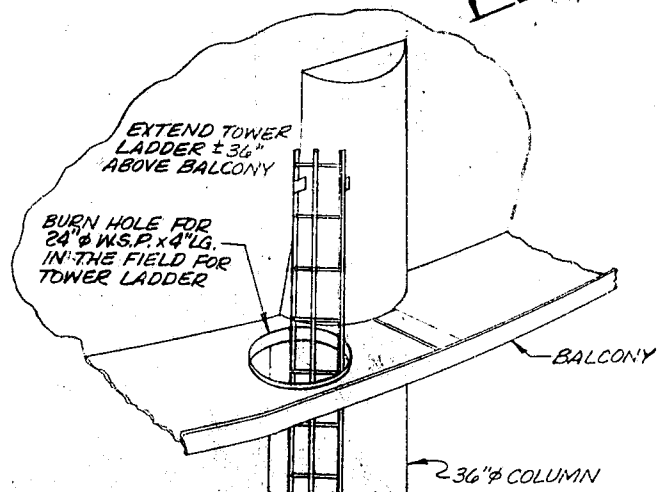


NOTE: FOR MORE INFORMATION ON THE
 BASE ELL DIMENSIONS REFER TO
 ENGINEERING CALC. SHEET.

OVERFLOW & BLOW OFF PIPING PLANS



STATIONARY ROOF LADDER
 W/ SAF-T-CLIMB START ± 36" ABOVE BALCONY



NO.	DATE	BY	REVISION

UNIVERSAL TANK & IRON WORKS, INC.
 INDIANAPOLIS, INDIANA

ENGINEER APPROVAL

LADDER & OVERFLOW
 1,000,000 GAL. 163'-0" HWL.

FOR: CARY, N. CAROLINA

DATE: 3-14-74

SCALE: NONE

DRAWN BY: LD

CHECKED: ...