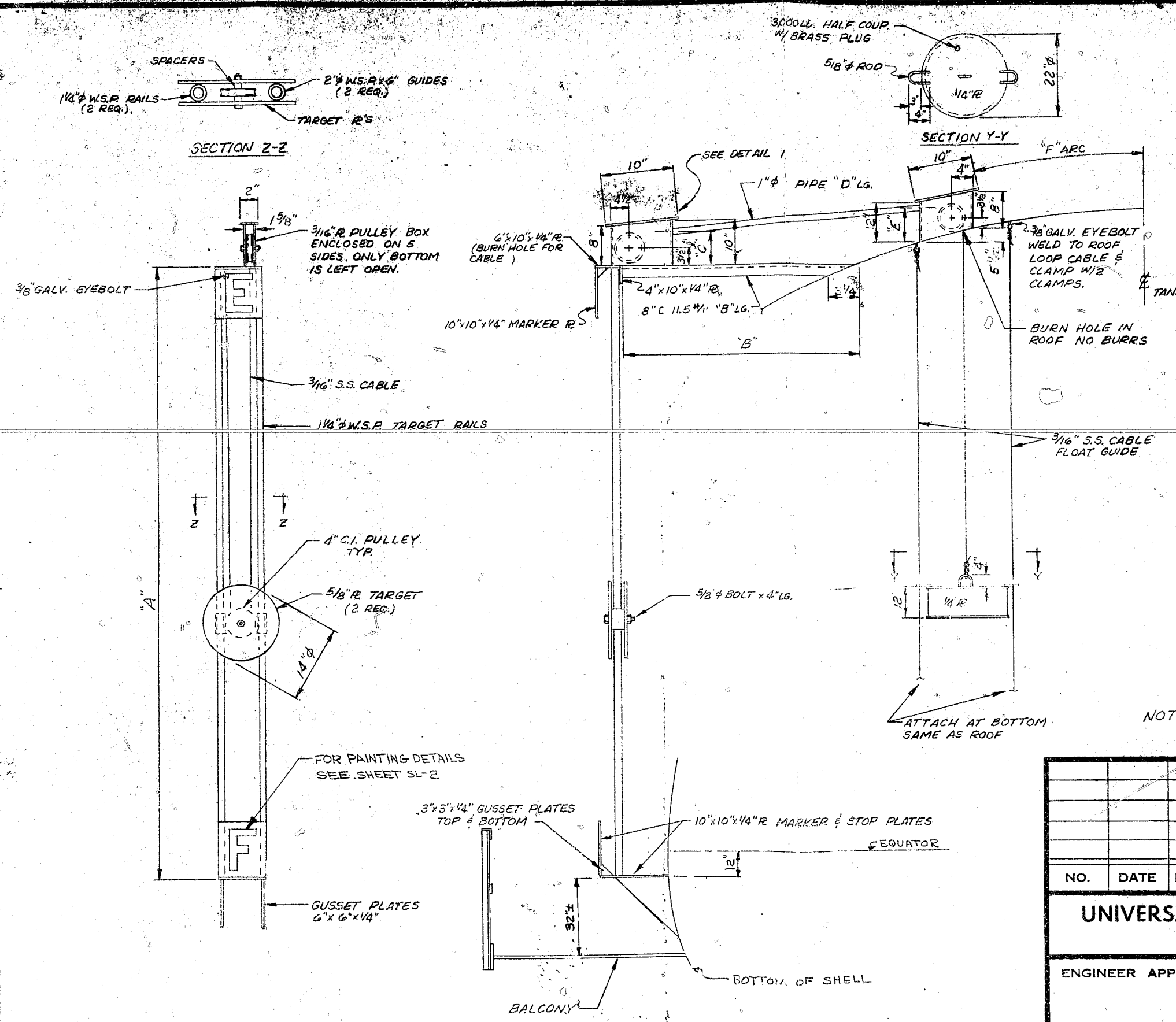


TABULATION

TANK SIZE	A	B	C	D	E	F	CABLE REQ'D (TOTAL)
50	11'-6"	30"	6 ⁹ / ₃₂ "	66"	5 ¹ / ₈ "	67"	90'
75	10'-0"	36"	6 ⁵ / ₃₂ "	84"	5 ¹⁵ / ₃₂ "	78"	90'
100	12'-6"	80"	5 ¹ / ₂ "	96"	6 ¹ / ₁₆ "	84"	95'
125	15'-0"	24"	7 ⁹ / ₃₂ "	84"	4 ⁷ / ₃₂ "	108"	110'
150	16'-0"	42"	6 ⁹ / ₃₂ "	11'-0"	5 ¹ / ₃₂ "	66"	120'
200	16'-0"	36"	7 ⁵ / ₃₂ "	108"	4 ²⁵ / ₃₂ "	10'-0"	120'
250	16'-0"	42"	6 ¹³ / ₃₂ "	96"	5 ¹ / ₈ "	13'-6"	120'
300	17'-0"	52"	6 ³ / ₈ "	74"	5 ⁹ / ₁₆ "	15'-0"	125'
500 50φ	21'-0"	72"	6 ³ / ₈ "	2'-0"	5 ⁹ / ₁₆ "	14'-0"	140'
500 24φ	17'-0"	140"	5¹/₁₆"	21'-0"	6⁵/₈"	11'-6"	130'
IMM 5φ	19'-0"	120"	6 ¹ / ₂ "	118"	9"	28'-0"	150'



NOTE: 6 GALV. THIMBLES & 12 CABLE CLAMPS REQ.
& 6 - 3/8" GALV. EYEBOLTS

NO.	DATE	BY	REVISION

UNIVERSAL TANK & IRON WORKS, INC.
INDIANAPOLIS, INDIANA

ENGINEER APPROVAL	WATER LEVEL INDICATOR IMM GAL. ~ HALF TRAVEL
FOR: CARY, N. CAROLINA	
DATE: 4-14-74	SCALE: NONE
DRWN BY: LD	CHECKED: V.L.R.