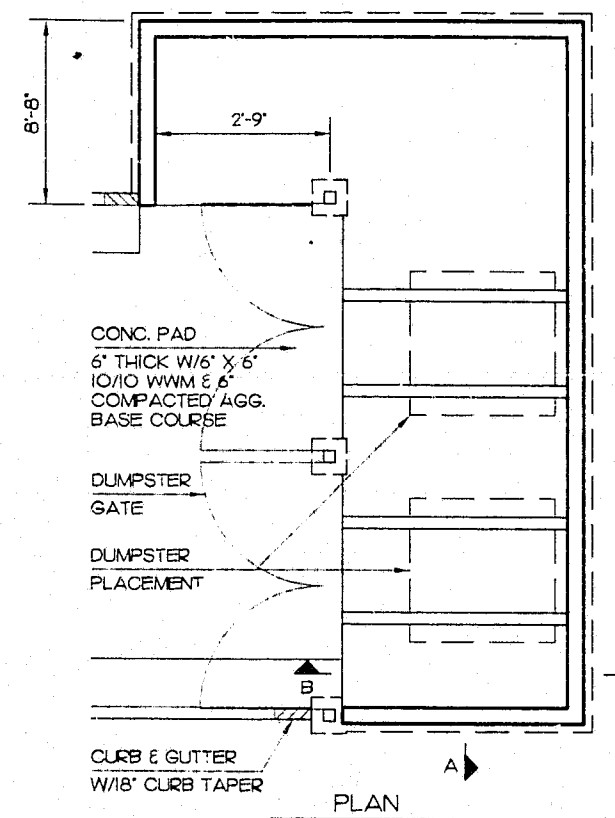
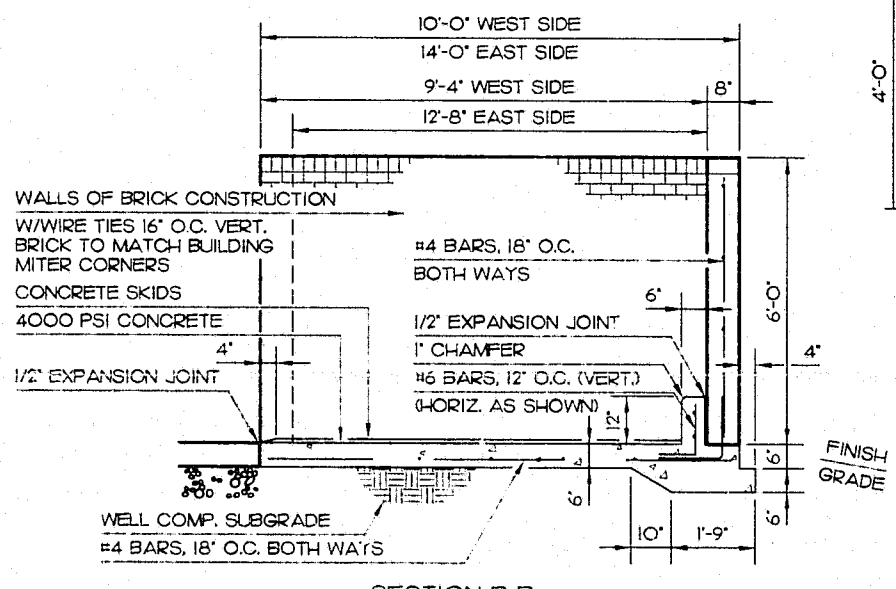


SECTION A-A

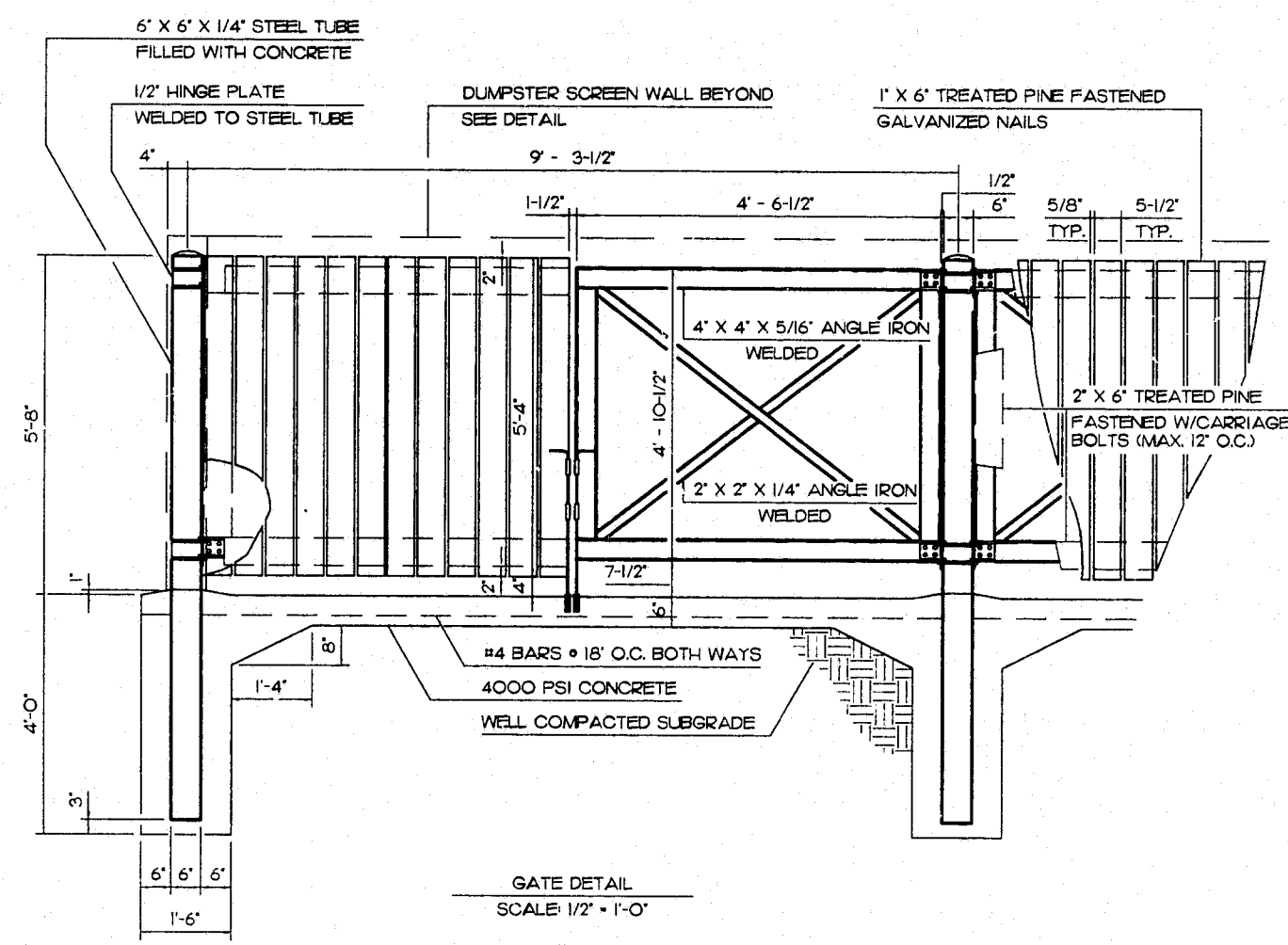


PLAN

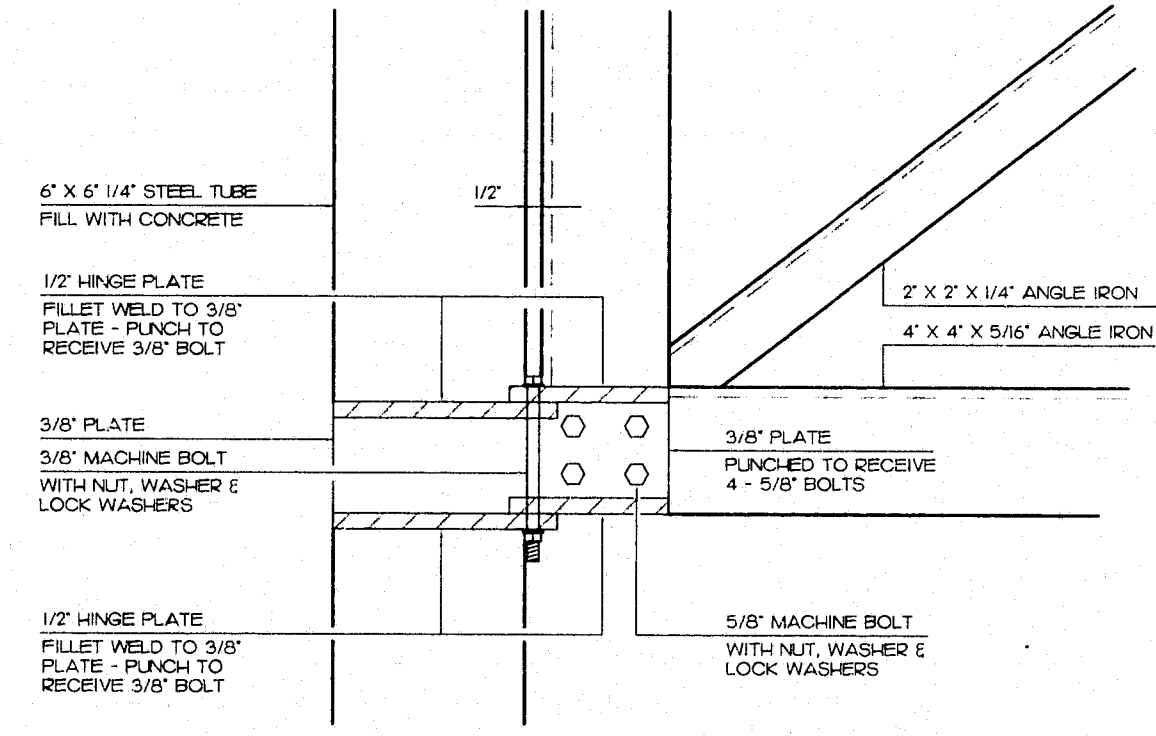
1 DUMPSTER ENCLOSURE  
L-B NOT TO SCALE



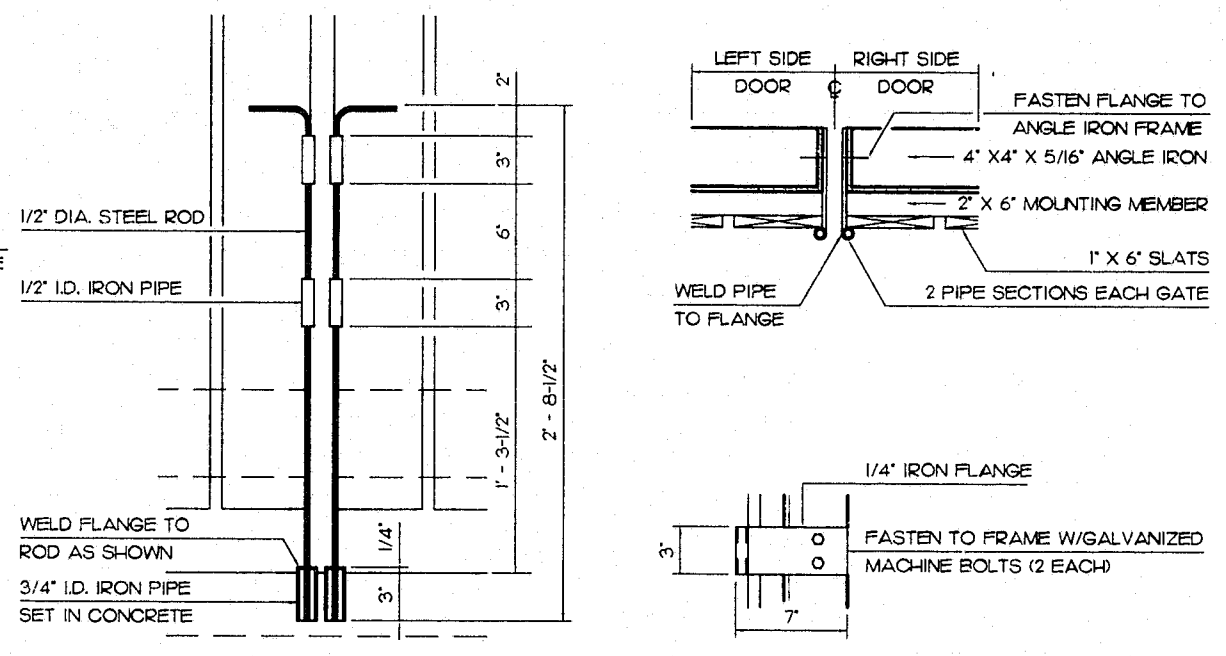
SECTION B-B



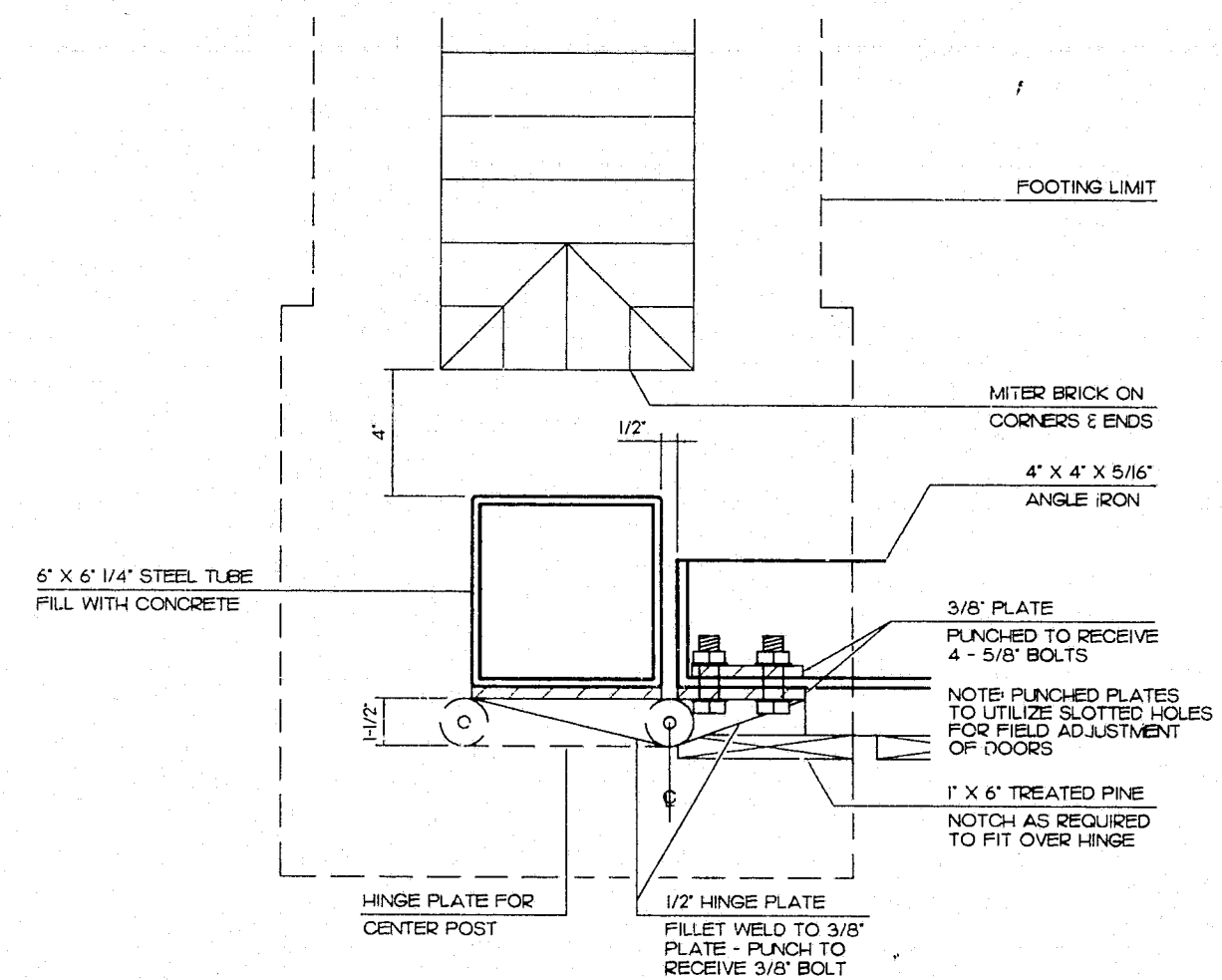
GATE DETAIL  
SCALE: 1/2\"/>



GATE HINGE DETAIL  
SCALE: 3\"/>



LATCH DETAIL  
SCALE: 1-1/2\"/>



SECTION - POST  
SCALE: 3\"/>

- NOTES
1. CONFIRM ALL DIMENSIONS ON SITE PRIOR TO FABRICATION OF THE GATES.
  2. PAINT ALL EXPOSED METAL SURFACES WITH ONE COAT RUST-OLEUM X-60 PRIMER AND TWO COATS RUST-OLEUM HIGH GLOSS PAINT IN A COLOR THAT IS COMPATIBLE WITH ADJACENT MATERIALS. SUBMIT SAMPLES TO LANDSCAPE ARCHITECT FOR APPROVAL.
  3. ALL WOOD SURFACES SHALL RECEIVE TWO COATS OF PAINT, IN A COLOR THAT IS COMPATIBLE WITH ADJACENT MATERIALS. SUBMIT SAMPLES TO LANDSCAPE ARCHITECT FOR APPROVAL.

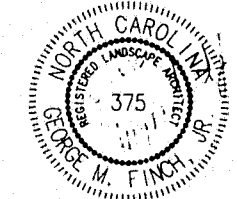
2 DUMPSTER GATES  
L-B SCALE AS SHOWN

CONSTRUCTION DETAILS  
L-B SCALE AS SHOWN

REVISIONS  
12 JUNE, '96  
PARKING  
DELETED

GEORGE FINCH, LANDSCAPE ARCHITECT, P.A. / LANDSCAPE ARCHITECTURE  
601 OBERLIN ROAD, SUITE 200  
RALEIGH, NORTH CAROLINA 27605  
919/883-1212

A PROJECT BY DAYS DEVELOPMENT AND CONSTRUCTION, INC.  
ALS-CARY HOME FOR THE AGED  
N.C. HIGHWAY 54  
CARY, NORTH CAROLINA



DRAWN BY ABC  
CHECKED BY GMF  
PROJECT NO. 9528  
DATE 27 NOV., '95  
L-8  
SHEET OF