

AMF  
BOWLING  
SOUTHILLS,  
CARY, N.C.

GENERAL NOTES:  
1. CONTRACTOR TO SCHEDULE ALL WORK WITH SOUTH HILLS AMF.

REV. DATE: REVISION DESCRIPTION

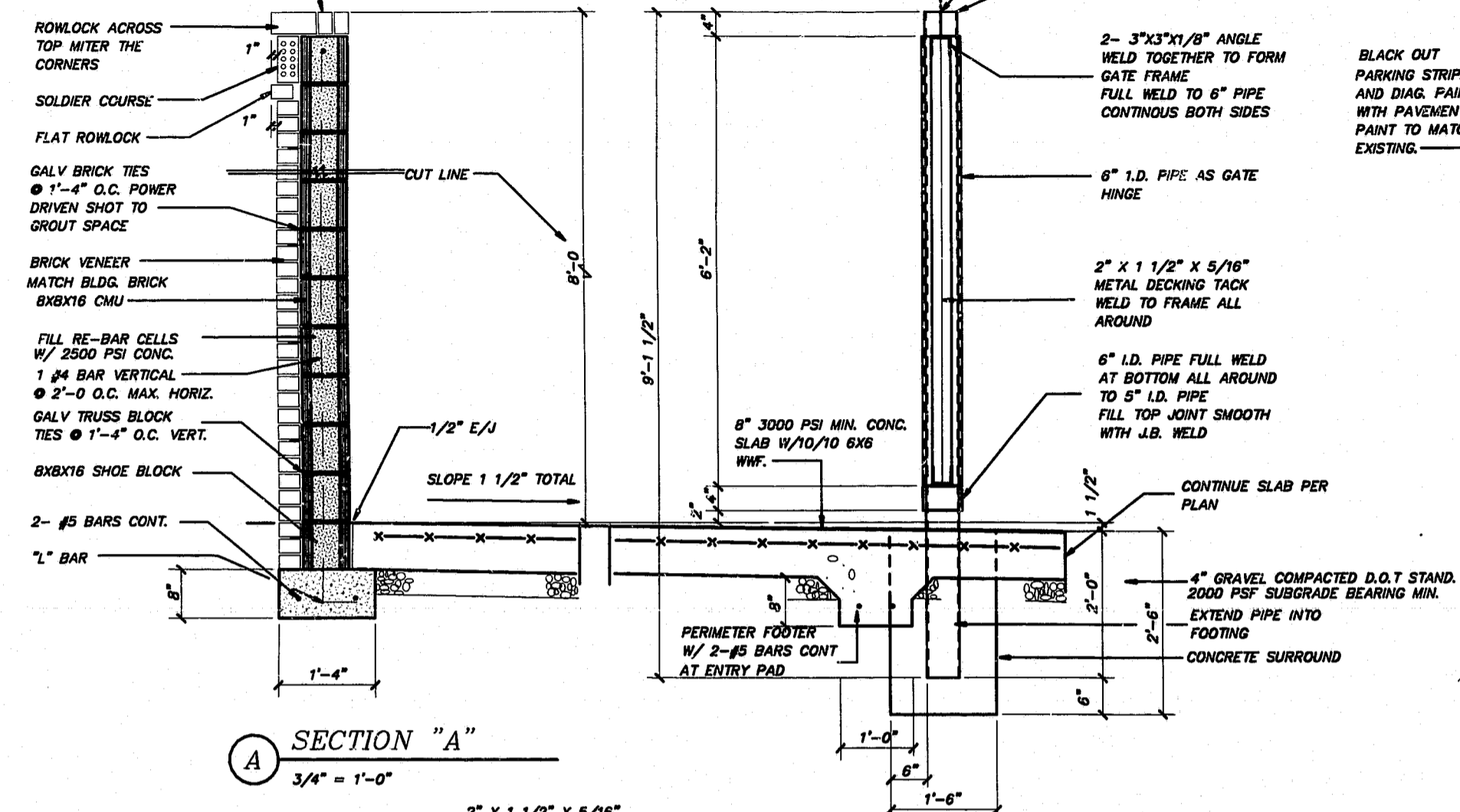
G. CLEVELAND PATE, AIA  
Architecture • Planning  
6013 Fordland Drive, Raleigh, NC 27608  
919-851-0052

SEALS:  
G. CLEVELAND PATE, AIA  
4395  
6/26/00  
CARY, N.C.

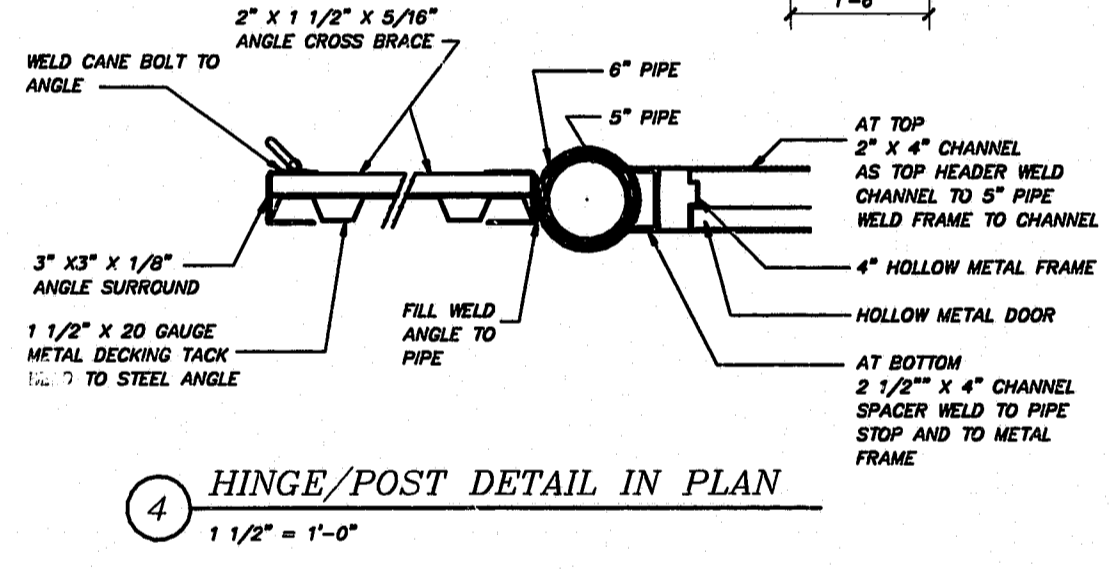
DUMPSTER  
ENCLOSURE

GCP	CVF	SHEET:
DESIGNED BY:	DRAWN BY:	S-1
GCP	GCP	
CHECKED BY:	APPROVED BY:	OF:
CONDOC	6/26/2000	
CAD FILE NAME:	PROJECT #	DATE:

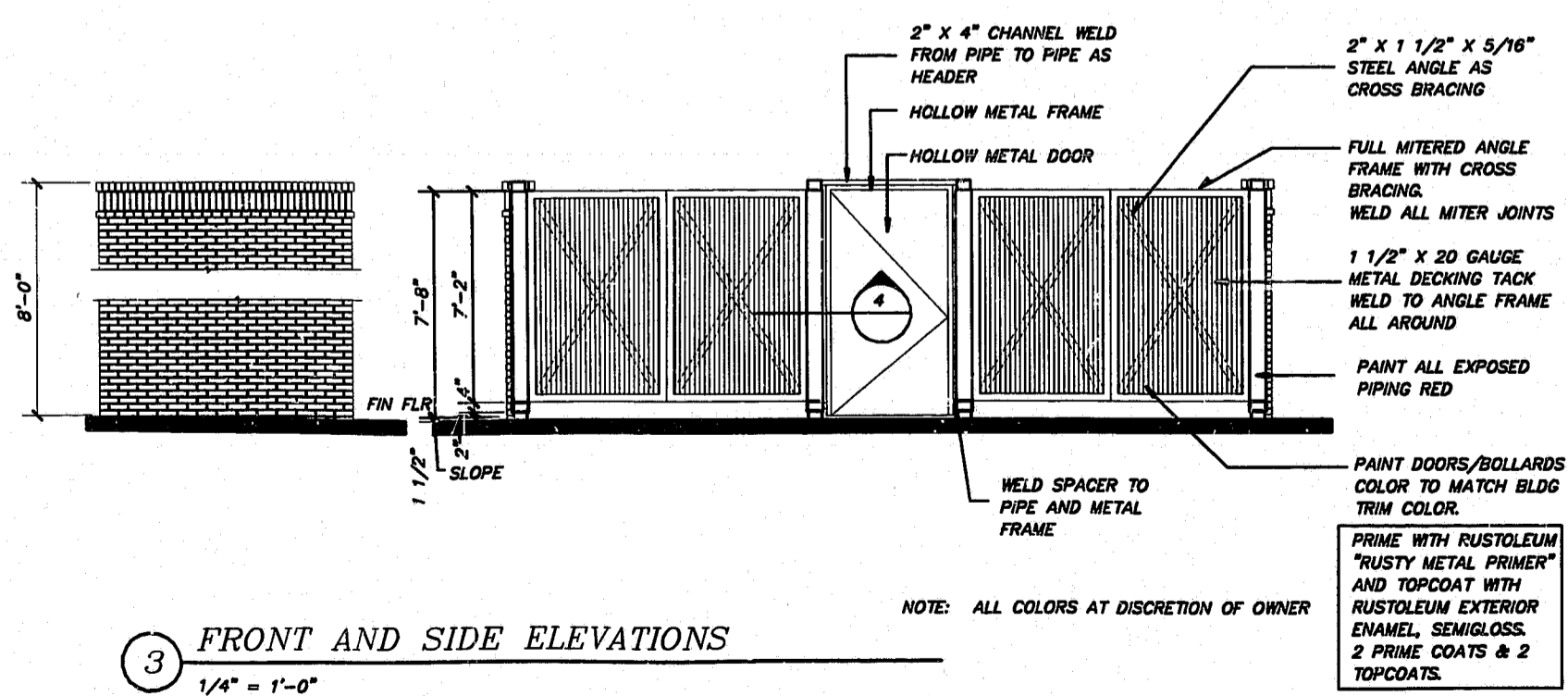
NOTE: BRICK SHOWN FOR CLARITY OF TYPICAL SIDE SECTION. REAR IS NOT FULL BRICK (SEE PLAN). INSTALL ROLOC ON TOP OF REAR WALL



SECTION "A"  
3/4" = 1'-0"



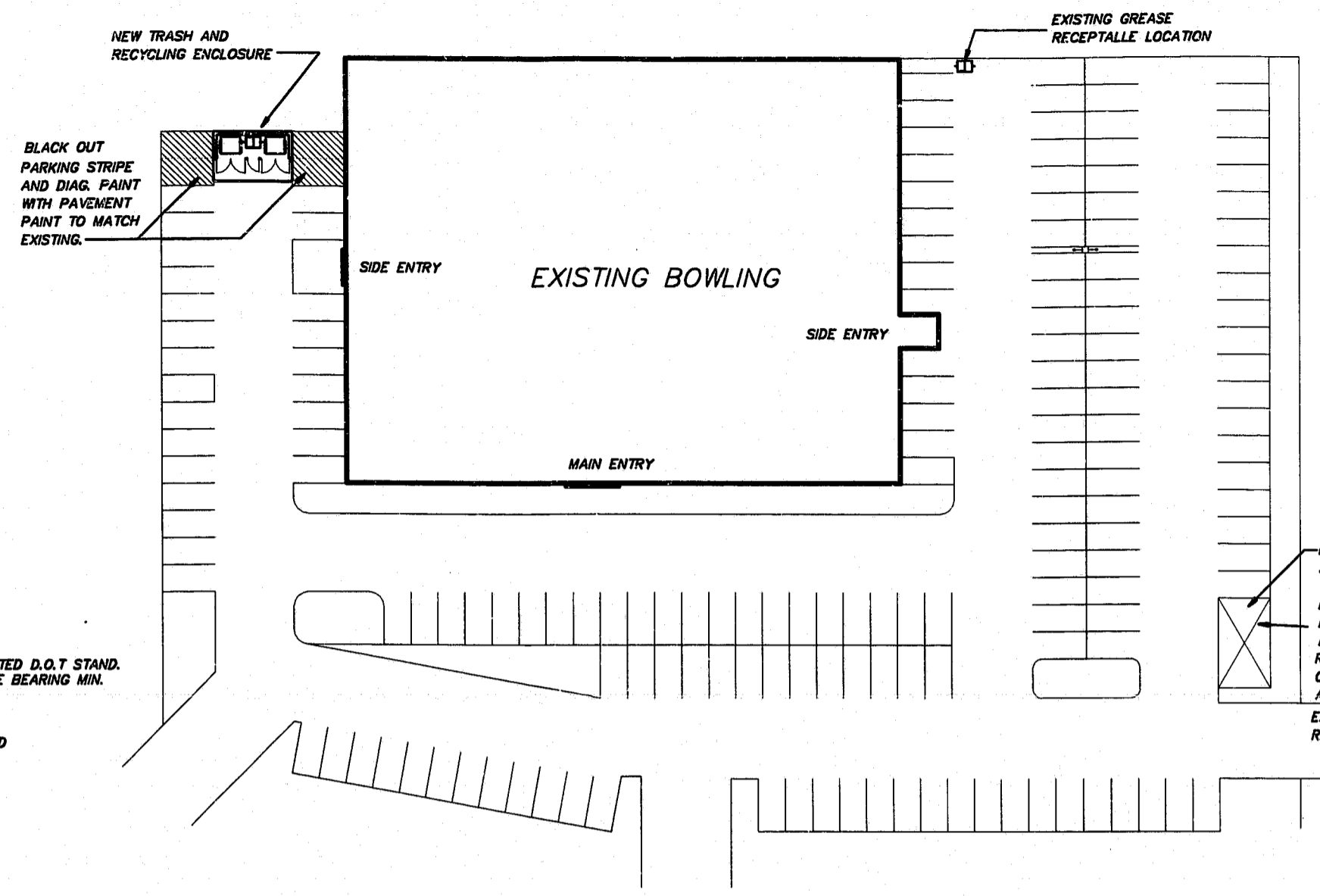
HINGE/POST DETAIL IN PLAN  
1 1/2" = 1'-0"



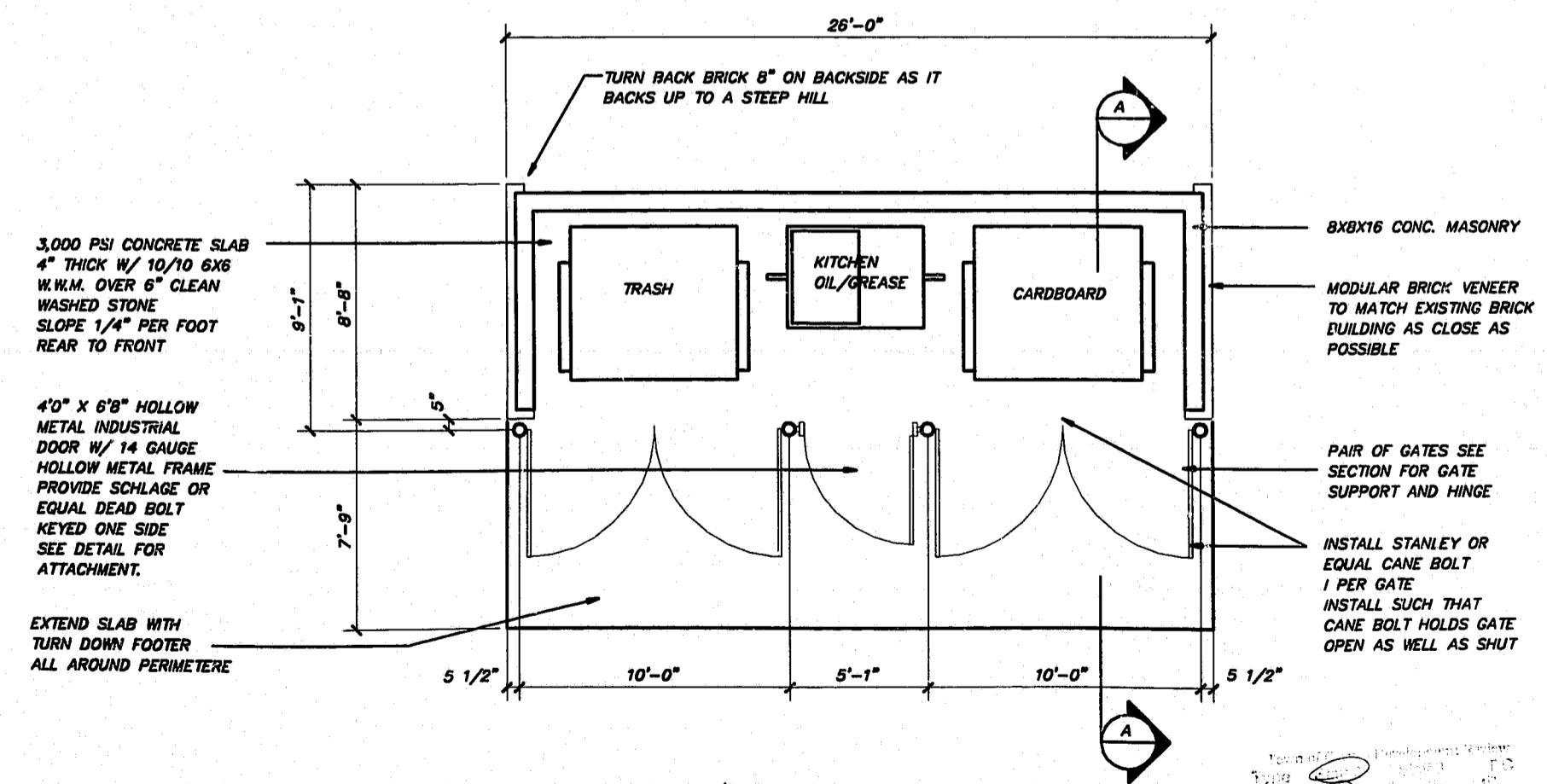
FRONT AND SIDE ELEVATIONS  
1/4" = 1'-0"

NOTE: ALL COLORS AT DISCRETION OF OWNER

PRIME WITH RUSTOLEUM "RUSTY METAL PRIMER" AND TOPCOAT WITH RUSTOLEUM EXTERIOR ENAMEL, SEMI-GLOSS. 2 PRIME COATS & 2 TOPCOATS.



SITE PLAN FOR INFORMATION ONLY  
NOT TO SCALE



TYP. TRASH/RECYCLING ENCL. PLAN  
1/4" = 1'-0"

AMF BOWLING DUMPSTER  
00-SP-128