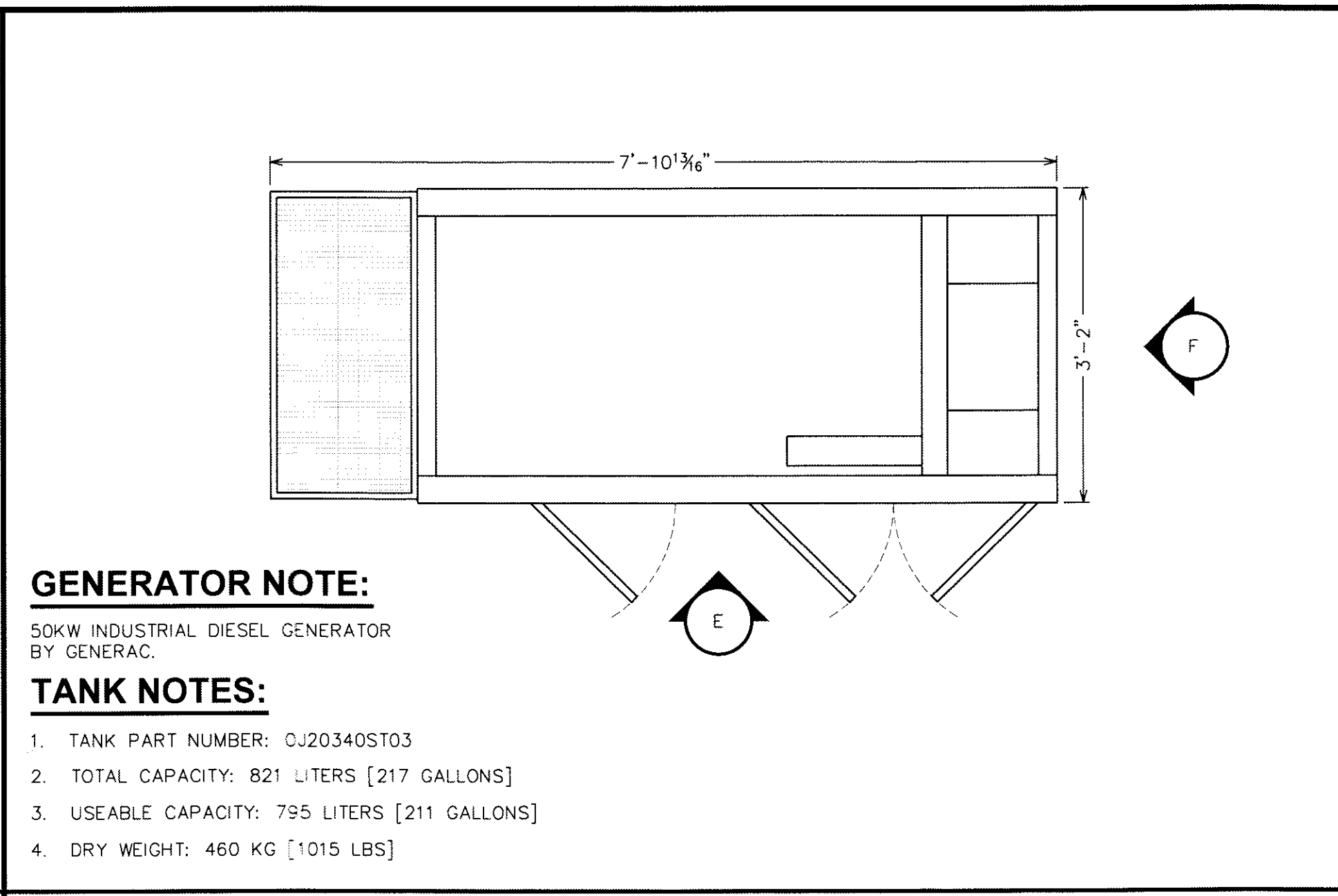


EQUIPMENT LAYOUT
SCALE: 3/8" = 1'-0"
SCALE IN FEET

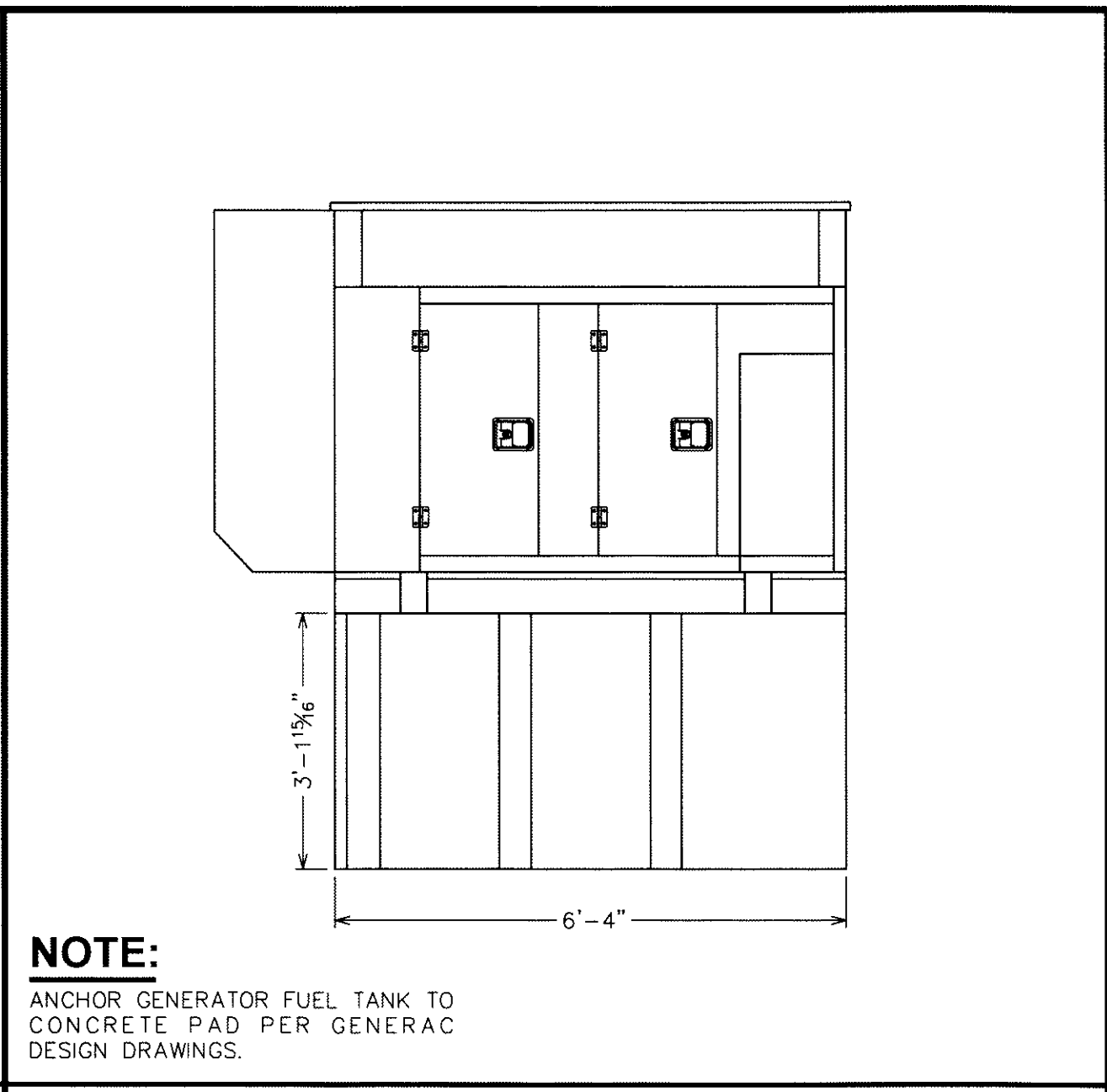


GENERATOR LAYOUT
SCALE: 3/4" = 1'-0"
SCALE IN FEET

GENERATOR NOTE:
50KW INDUSTRIAL DIESEL GENERATOR BY GENERAC.

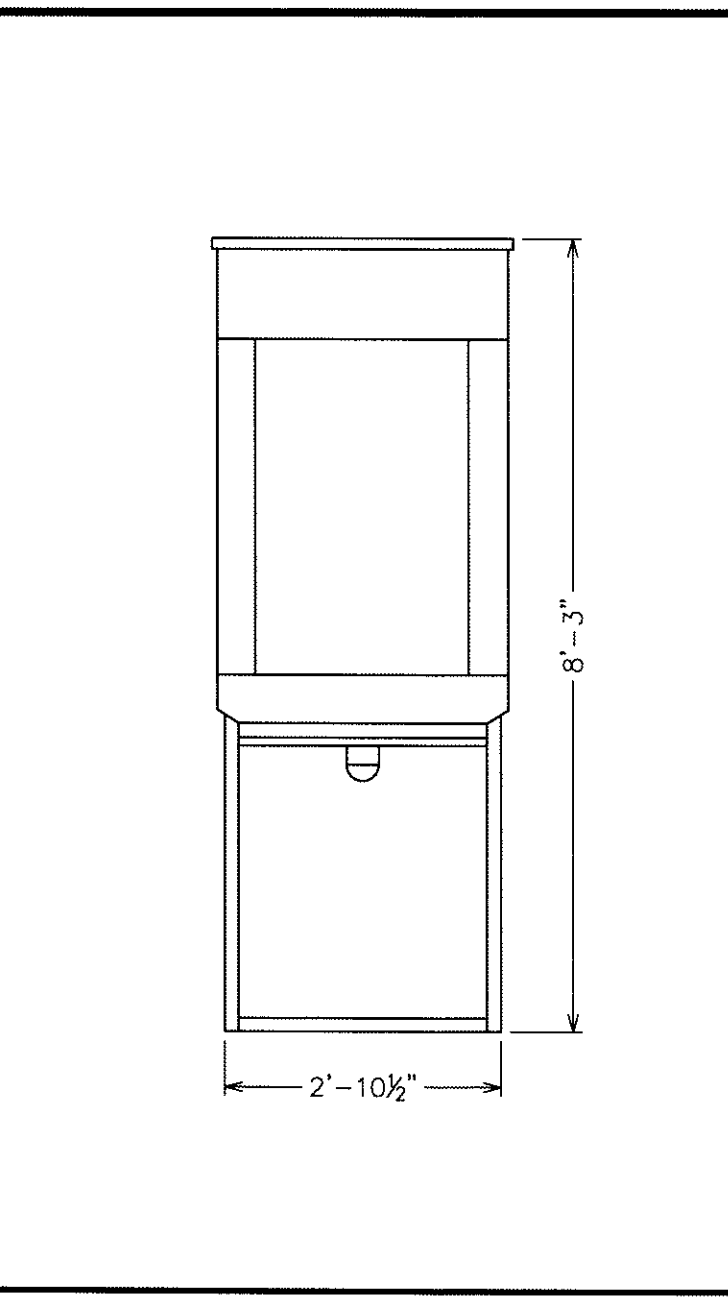
TANK NOTES:

- TANK PART NUMBER: QJ20340ST03
- TOTAL CAPACITY: 821 LITERS [217 GALLONS]
- USEABLE CAPACITY: 795 LITERS [211 GALLONS]
- DRY WEIGHT: 460 KG [1015 LBS]

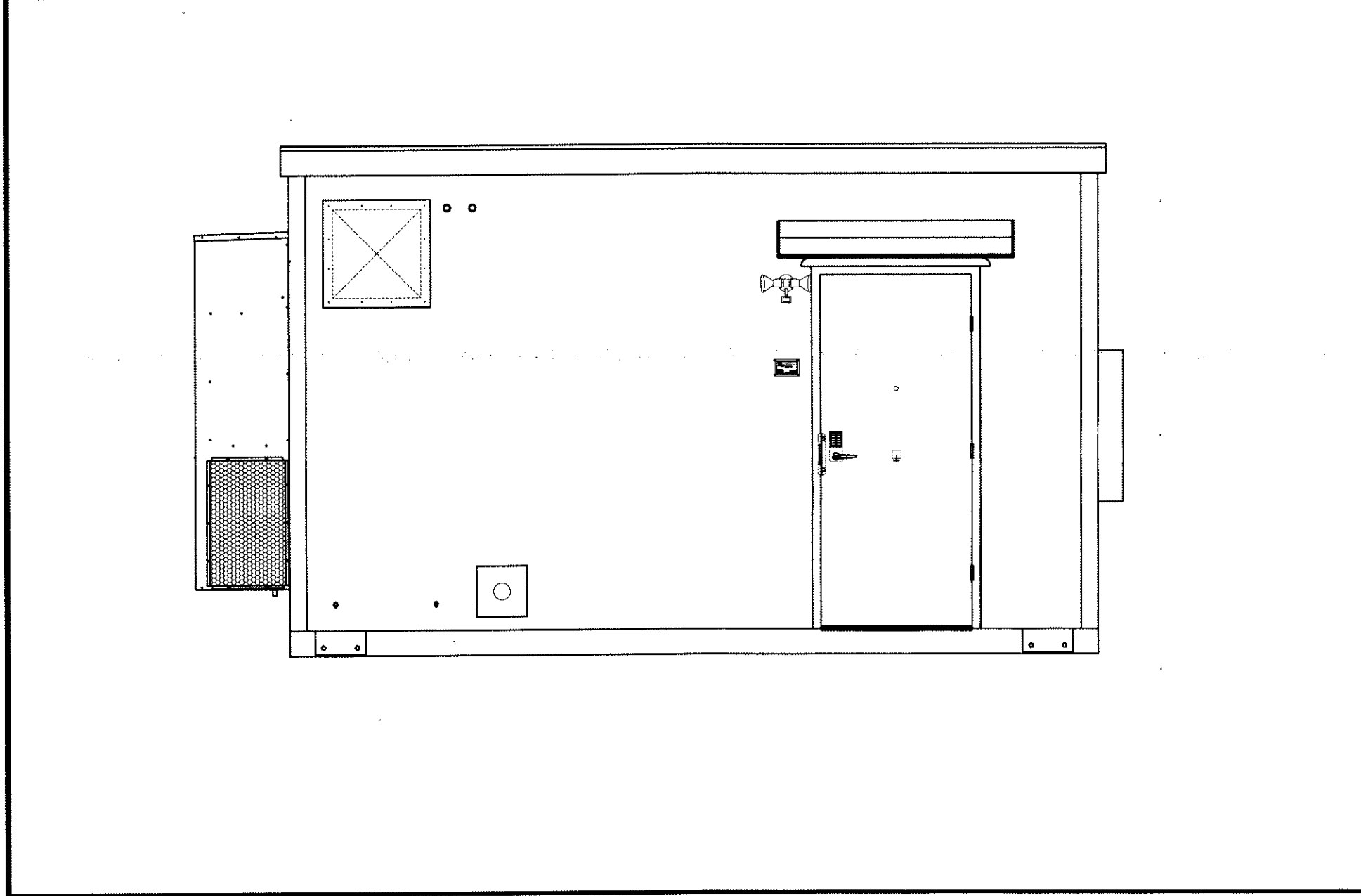


ELEVATION E
SCALE: 1/2" = 1'-0"
SCALE IN FEET

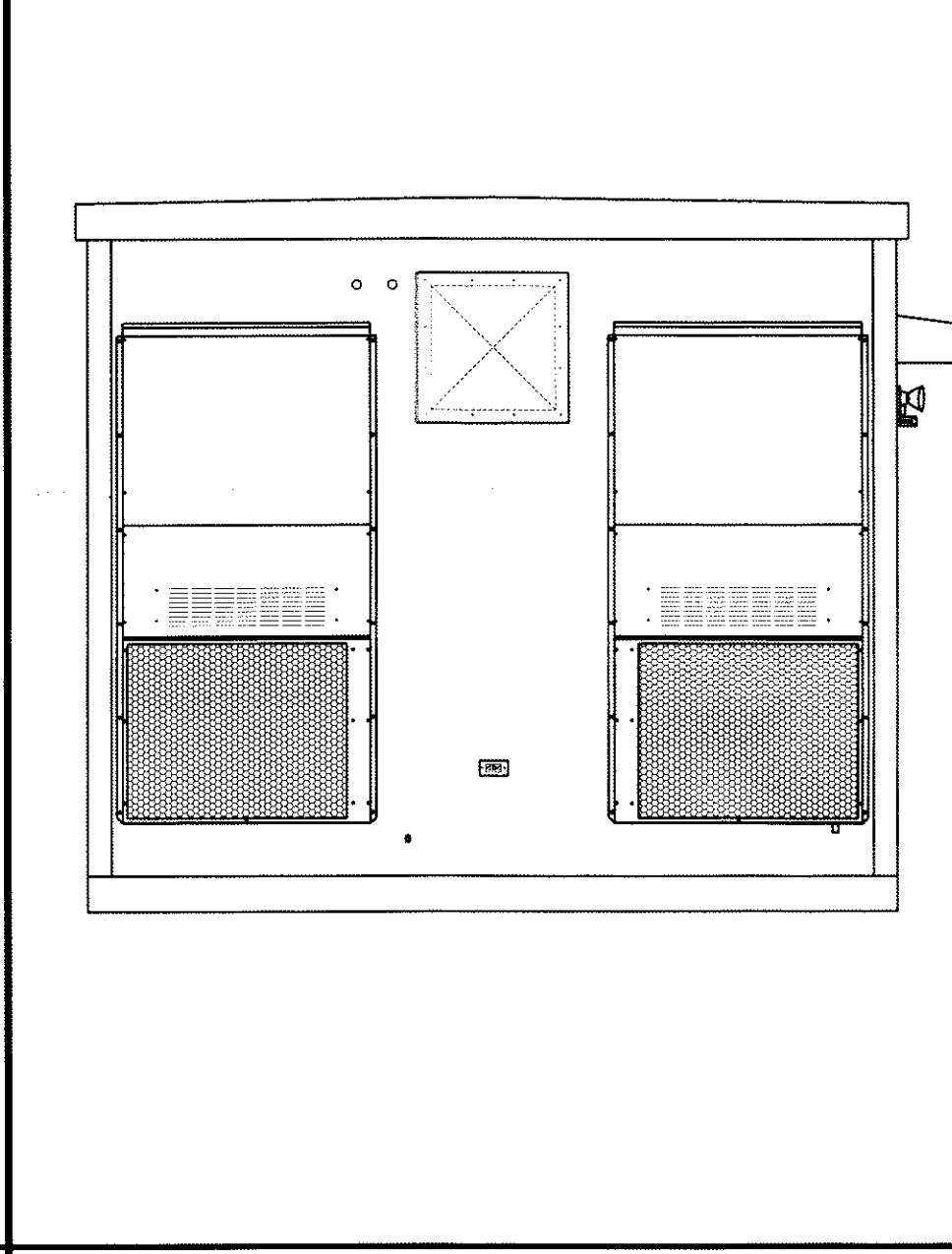
NOTE:
ANCHOR GENERATOR FUEL TANK TO CONCRETE PAD PER GENERAC DESIGN DRAWINGS.



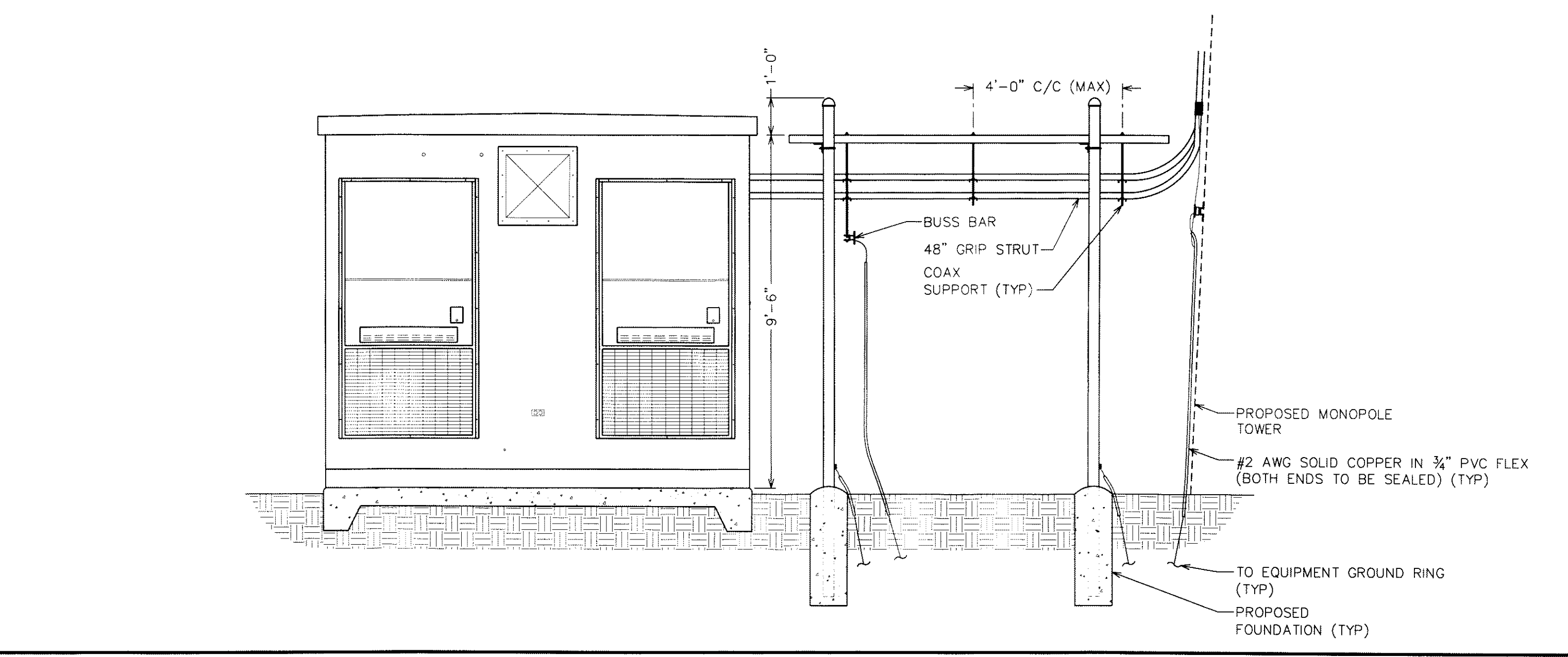
ELEVATION F
SCALE: 1/2" = 1'-0"
SCALE IN FEET



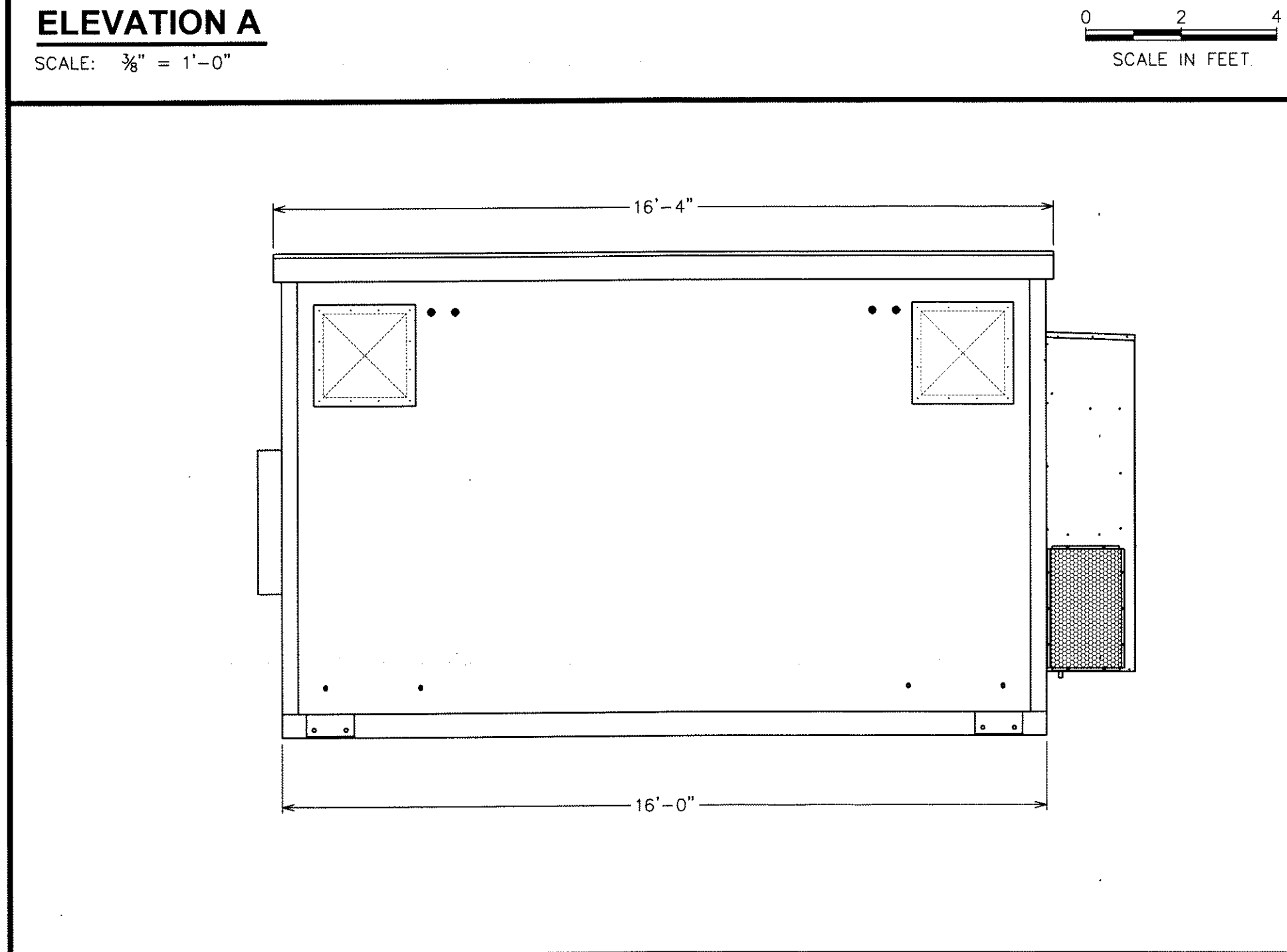
ELEVATION A
SCALE: 3/8" = 1'-0"
SCALE IN FEET



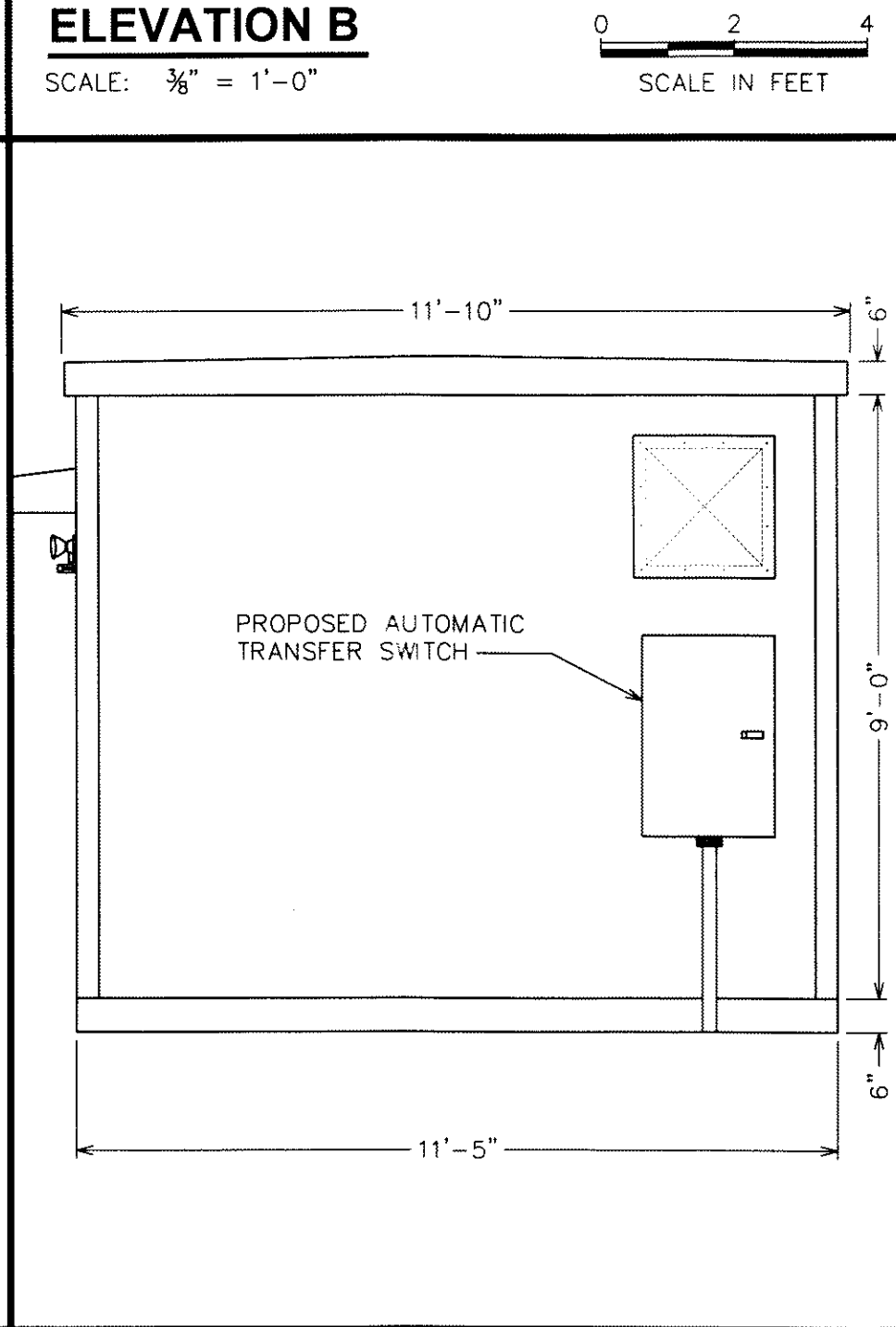
ELEVATION B
SCALE: 3/8" = 1'-0"
SCALE IN FEET



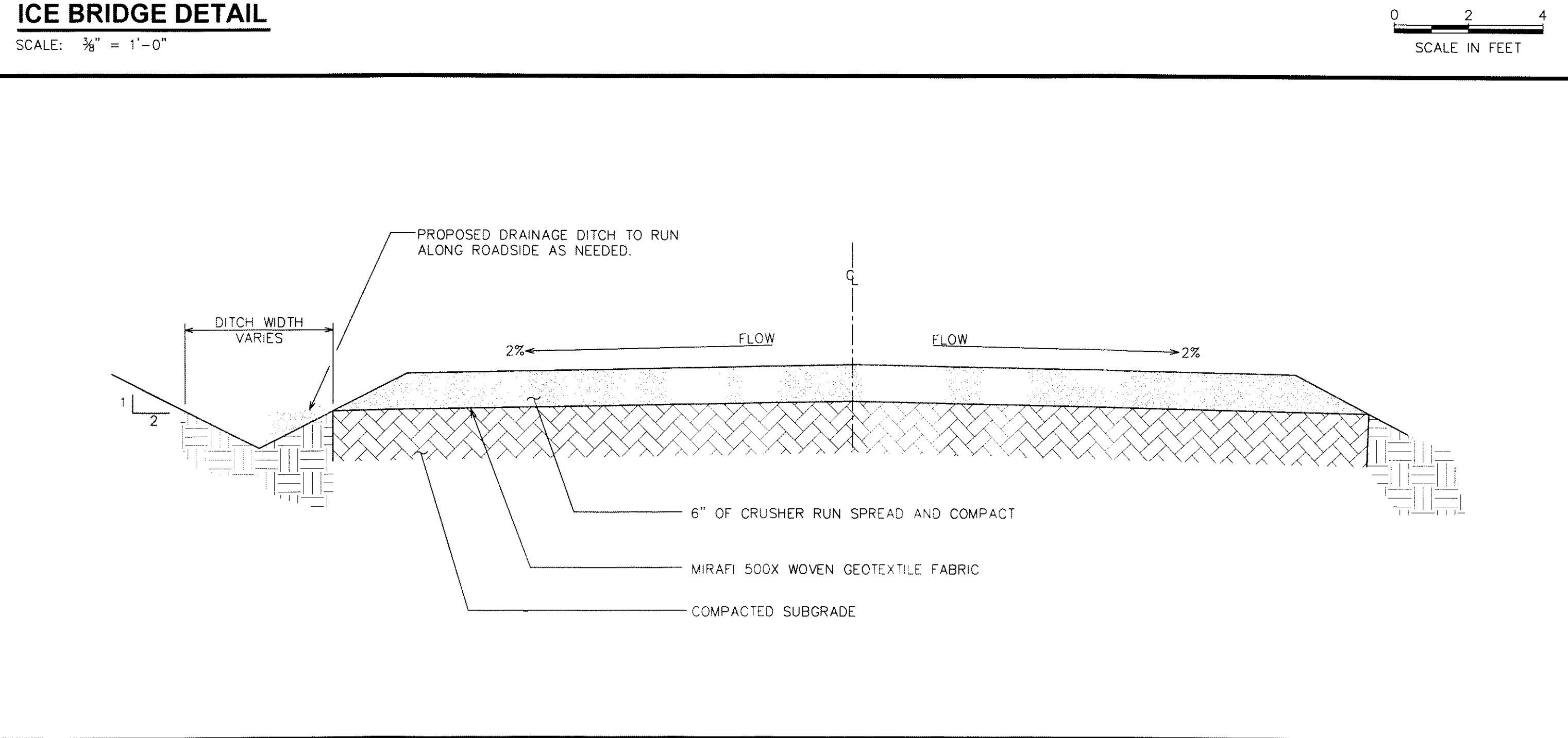
ICE BRIDGE DETAIL
SCALE: 3/8" = 1'-0"
SCALE IN FEET



ELEVATION C
SCALE: 3/8" = 1'-0"
SCALE IN FEET



ELEVATION D
SCALE: 3/8" = 1'-0"
SCALE IN FEET



STANDARD ROAD SECTION (GOOD SUBGRADE)
SCALE: 3/4" = 1'-0"
SCALE IN FEET

PLANS PREPARED FOR:

MasTec
Network Solutions

PLANS PREPARED BY:

TOWER ENGINEERING PROFESSIONALS
3703 LUNCION BOULEVARD
RALEIGH, NC 27603-5263
OFFICE: (919) 661-6351
FAX: (919) 661-6350
N.C. LICENSE # C-1794

SEAL:

CAROLINA STATE UNIVERSITY
NORTH CAROLINA
KIMBERLY S. KIMBERLY
REGISTERED PROFESSIONAL ENGINEER
No. 14122

| REV | DATE | DESCRIPTION |
|-----|----------|--------------|
| 1 | 09-12-13 | PRELIMINARY |
| 2 | 09-25-13 | CONSTRUCTION |
| 3 | 01-22-14 | CONSTRUCTION |
| 4 | 02-28-14 | CONSTRUCTION |
| 5 | 04-07-14 | CONSTRUCTION |
| 6 | 05-20-14 | CONSTRUCTION |

DRAWN BY: CSN CHECKED BY: CSN

14-SP-027
HTR-14-1322
APPROVED FOR THE BOARD OF CAROLINA STATE UNIVERSITY DEVELOPMENT REVIEW COMMITTEE
PLANNER: *[Signature]* DATE: 7/16/14

PROJECT INFORMATION:

AT&T #: 368-501
1670 OLD APEX ROAD
CARY, NC 27511
(WAKE COUNTY)

SHEET TITLE: **CIVIL DETAILS II**

SHEET NUMBER: **C-3**

REVISION: **6**

TEP #: 131509

May 20, 2014