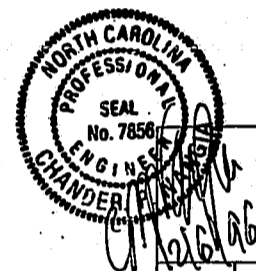


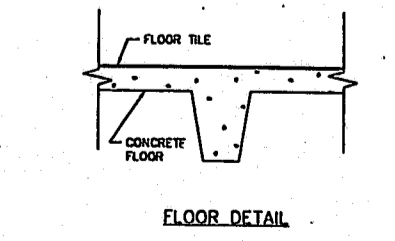
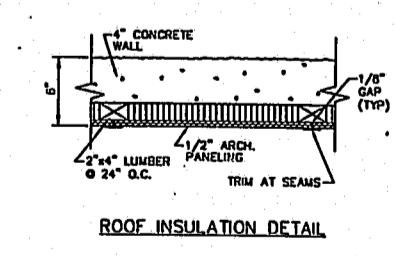
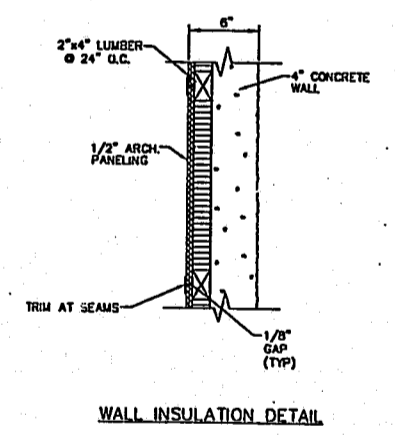
CONSTRUCTION DOCUMENTS
RALEIGH OFFICE



DATE	11/27/96	DESCRIPTION	APPROVAL ISSUE
BY	J. Henry	DATE	10/23/96
PROJECT NO.	FC1012-26-9	SCALE	AS SHOWN
PROJECT NAME	ATT WIRELESS FCS1012-26-9	SCALE	5-12
PROJECT NO.	FC1012-26-39	SCALE	1-1

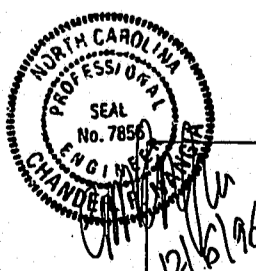
ITEM	QTY	U/M	PART NO.	DESCRIPTION
1	1	EA	FC1012-26-29	CONCRETE SHELTER CASING
2	1	EA	367981-12CE-3	DOOR, 36\"/>

DATE	10/23/96	DESCRIPTION	APPROVAL ISSUE
BY	J. Henry	DATE	10/23/96
PROJECT NO.	FC1012-26-9	SCALE	AS SHOWN
PROJECT NAME	ATT WIRELESS FCS1012-26-9	SCALE	5-12
PROJECT NO.	FC1012-26-9	SCALE	1-6



APPROVED
TER 9/8/97
TM 96-91

CONSTRUCTION DOCUMENT
RALEIGH OFFICE



DATE	10/23/96	DESCRIPTION	APPROVAL ISSUE
BY	J. Henry	DATE	10/23/96
PROJECT NO.	FC1012-26-9	SCALE	AS SHOWN
PROJECT NAME	ATT WIRELESS FCS1012-26-9	SCALE	5-12
PROJECT NO.	FC1012-26-9	SCALE	1-6

NOTE: QTY'S IN MATERIAL LIST WITH "*" ARE LISTED FOR REFERENCE ONLY. ACTUAL AS-BUILT QUANTITIES MAY VARY.

*ALL EXTERIOR FIXTURES TO BE WEATHERPROOF

NOTES: These drawings and specifications are the property of ANDREW CORPORATION. All information contained herein shall be held in confidence by the user of ANDREW and no part thereof shall be reproduced or transmitted in any form or by any means, electronic, mechanical, photocopying, recording, or by any information storage and retrieval system, without the prior written permission of ANDREW CORPORATION.