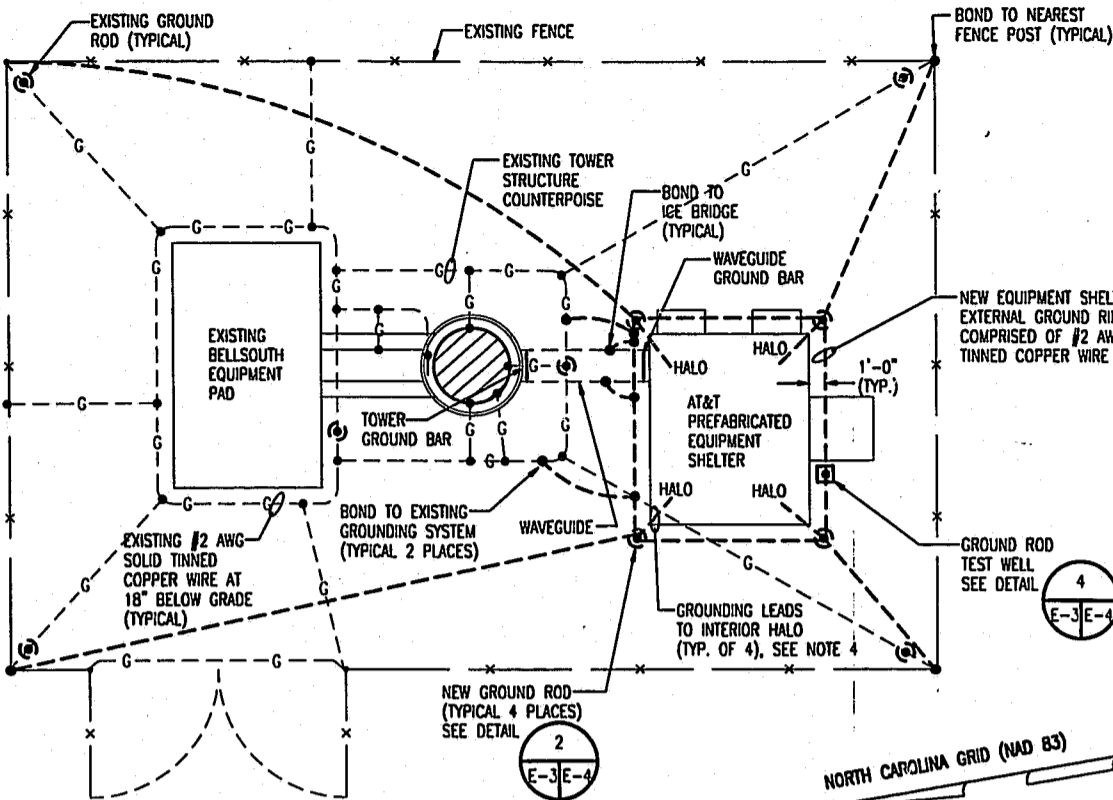


NOTES: (CONTIN.)

- GROUND THE ELECTRICAL METER TO A UFER IN THE STEEL OF THE BUILDING SLAB AND THEN CONNECT TO THE SITE GROUNDING RING.

NOTES:

- THE CONTRACTOR SHALL NOTIFY THE CONSTRUCTION MANAGER WHEN THE GROUNDING SYSTEM IS COMPLETE. THE CONSTRUCTION MANAGER SHALL INSPECT THE GROUNDING SYSTEM PRIOR TO BACKFILLING.
- MINIMUM SPACING BETWEEN GROUND RODS IS 10'-0".
- GROUND RINGS TO BE COMPRISED OF #2 AWG SOLID TINNED COPPER WIRE, BURIED AT 24" (MIN) BELOW FINISHED GRADE. ALL ABOVE AND BELOW GRADE CONNECTIONS SHALL BE CADWELDED. GROUNDING CONNECTIONS AT THE BUS BARS SHALL BE HI-PRESS CRIMPED CONNECTIONS.
- GROUNDING LEADS TO BUILDING INTERIOR HALO TO BE OF SUFFICIENT LENGTH TO REACH SPECIFIED LOCATION OF THE INTERIOR GROUNDING RING OR BAR, WITH A MINIMUM LENGTH OF 36".
- CONTRACTOR TO PROVIDE #2 AWG GROUNDING LEAD FROM INTERIOR EQUIPMENT AND GROUNDING BARS AS INSTRUCTED BY AT&T, INCLUDING BUT NOT LIMITED TO INTERIOR MASTER GROUND BAR, TELCO BOARD, EXTERIOR BUILDING GROUND BAR, WAVE GUIDE BRIDGE, FENCE POSTS, POWER METER, AND INTERIOR GROUNDING HALO (TYP AT 4 CORNERS).
- GROUND CONDUCTOR BENDS SHALL NOT BE LESS THAN 8" RADIUS.
- CONTRACTOR TO LOCATE AND IDENTIFY ALL UNDERGROUND UTILITIES AND GROUNDING WIRES PRIOR TO TRENCHING. DAMAGE CAUSED TO EXISTING SYSTEM SHALL BE REPAIRED AT CONTRACTORS EXPENSE.
- SEE AT&T "FACILITY GROUNDING AND SURGE SUPPRESSION STANDARD" FOR ADDITIONAL REQUIREMENTS INCIDENTAL TO INSTALLATION.



**SITE GROUNDING PLAN**

SCALE: 1/8" = 1'-0"

ELECTRICAL LEGEND	
	UNDERGROUND CONDUIT
	EXISTING UNDERGROUND GROUNDING SYSTEM
	GROUND CABLE RUN BELOW GRADE
	10' X 5/8" DIAMETER COPPER CLAD, STEEL GROUND ROD.
	GROUND ROD TEST WELL, GROUNDING ROD IN 6" DIAMETER HOLE
	EXOTHERMIC CONNECTION OF GROUND CABLE TO GROUND ROD
	SUBGRADE GROUNDING CABLE TO CABLE CONNECTION USING EXOTHERMIC PROCESS.

A	8/1/97	ISSUED FOR PERMITTING, BIDS AND OWNER'S REVIEW	BY	LA
NO.	DATE	REVISION DESCRIPTION	BY	CD

**AT&T WIRELESS COMMUNICATIONS**

RA008

SITE GROUNDING PLAN

copyright © 19 97

**Piedmont Osen-Hensley**  
ENGINEERS/ARCHITECTS/PLANNERS

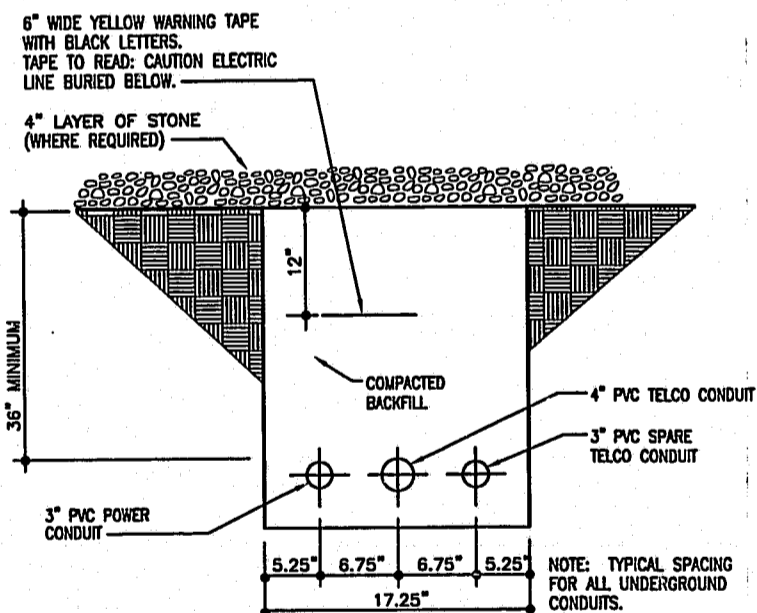
2301 Remondale Drive  
Post Office Box 31308, Raleigh, NC 27623-1308  
Tel: 919/782-5511 Fax: 919/782-5823



SEAL NOT VALID UNLESS SIGNED AND DATED

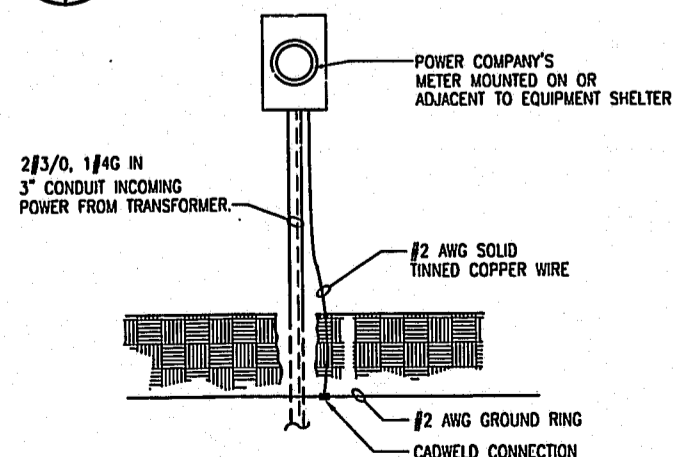
**CONSTRUCTION DOCUMENTS**  
RALEIGH OFFICE

PROJECT MANAGER D. BROWN	DEPARTMENT MANAGER A. ANCHORS
LEAD DESIGN PROJ. R. WATT	CHECKED A. ANCHORS
DRAWN R. WATT	DATE 7/10/97
PROJECT NUMBER 22828.00AT	DRAWING NUMBER E-3



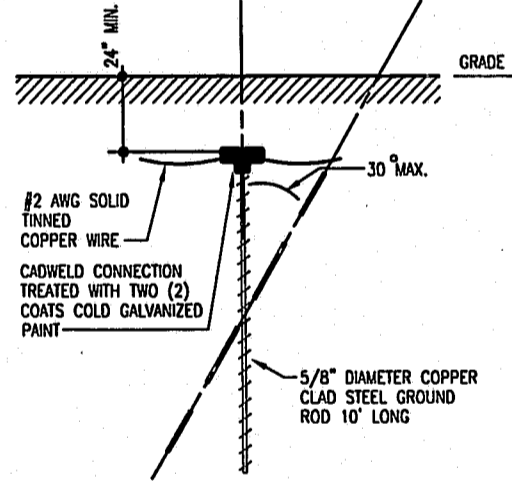
**UTILITY TRENCH DETAIL**

SCALE: NTS



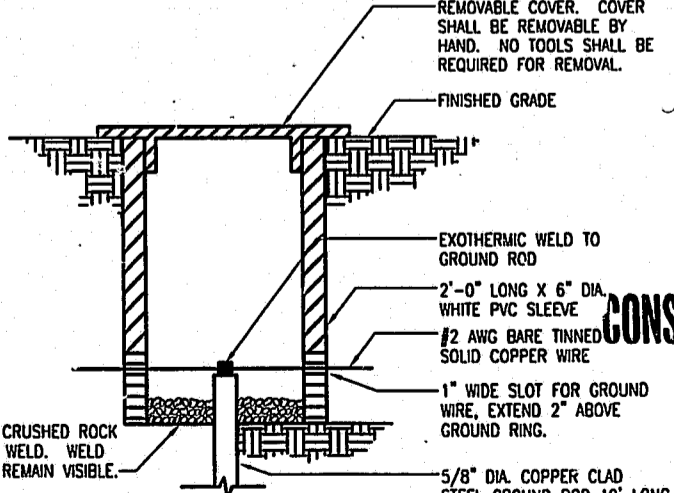
**METER BASE INSTALLATION DETAIL**

SCALE: NTS



**TYPICAL GROUND ROD**

SCALE: NTS



**GROUND ROD TEST WELL**

SCALE: NTS

A	8/1/97	ISSUED FOR PERMITTING, BIDS AND OWNER'S REVIEW	BY	LA
NO.	DATE	REVISION DESCRIPTION	BY	CD

**AT&T WIRELESS COMMUNICATIONS**

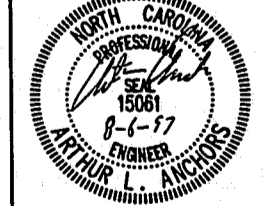
RA008

DETAILS

copyright © 19 97

**Piedmont Osen-Hensley**  
ENGINEERS/ARCHITECTS/PLANNERS

2301 Remondale Drive  
Post Office Box 31308, Raleigh, NC 27623-1308  
Tel: 919/782-5511 Fax: 919/782-5823



SEAL NOT VALID UNLESS SIGNED AND DATED

**CONSTRUCTION DOCUMENTS**  
RALEIGH OFFICE

PROJECT MANAGER D. BROWN	DEPARTMENT MANAGER A. ANCHORS
LEAD DESIGN PROJ. R. WATT	CHECKED A. ANCHORS
DRAWN R. WATT	DATE 7/10/97
PROJECT NUMBER 22828.00AT	DRAWING NUMBER E-4

**APPROVED**  
TEL 9/8/97  
TM 9-8-97