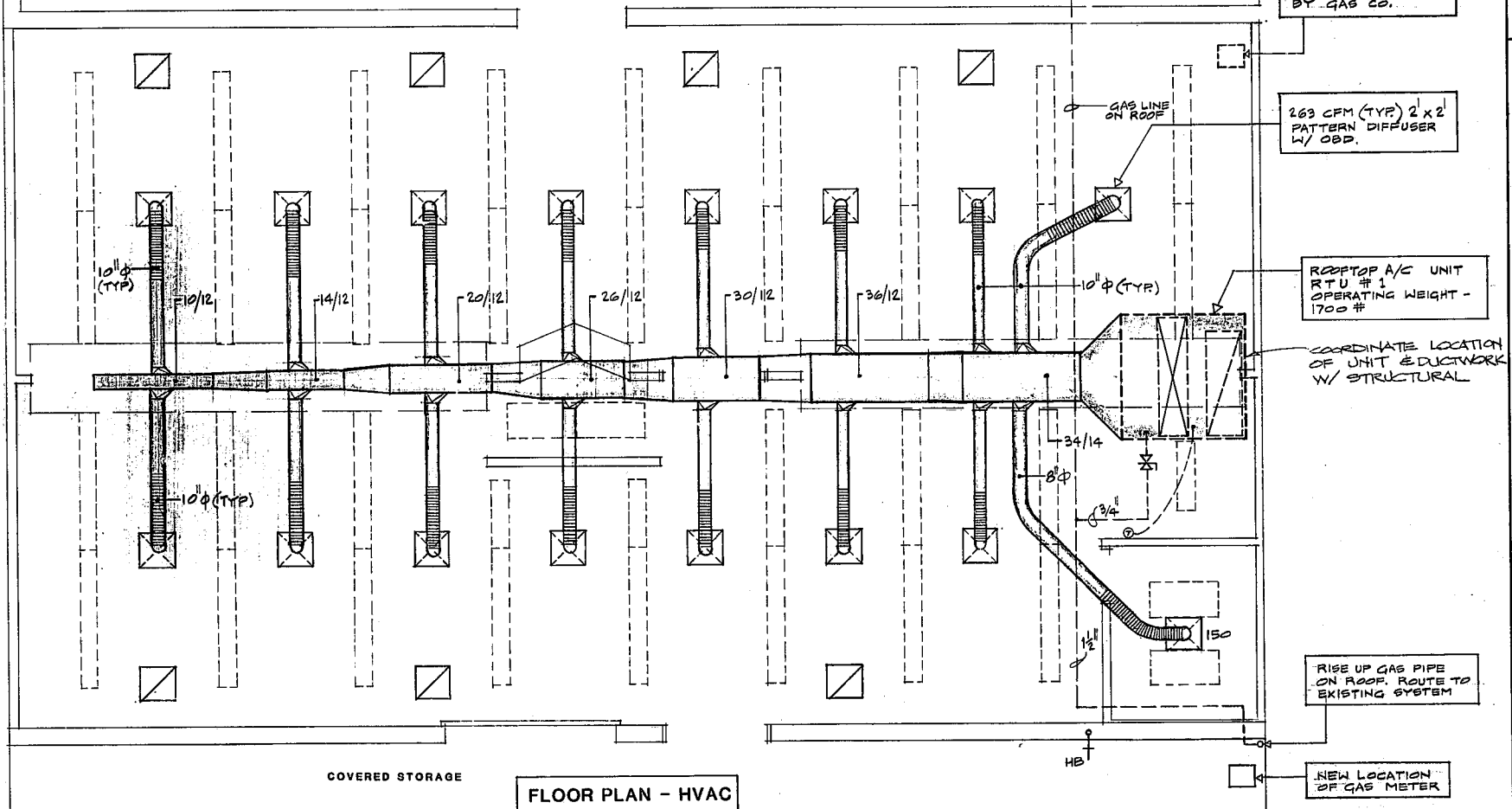
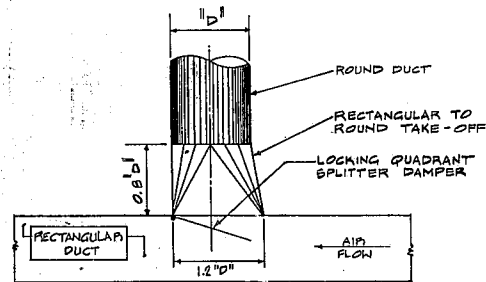


EXISTING



LEGEND

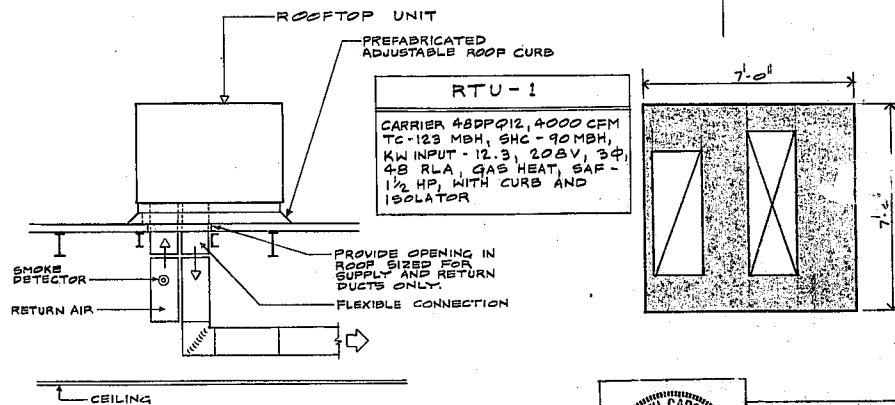
- SUPPLY AIR DIFFUSER IN CEILING
- FLEXIBLE ROUND DUCT, MAX. LENGTH 6'-10"
- TURNING VANES
- RETURN AIR GRILLE
- THERMOSTAT



TYPICAL LOW PRESSURE ROUND DUCT

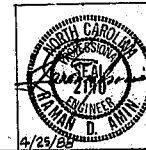
TAKE-OFF DETAIL

NO SCALE



ROOFTOP UNIT

NO SCALE



RAMAN D. AMIN & ASSOCIATES
CONSULTING ENGINEERS
SUITE 100, 121 S. ESTES DRIVE
CHAPEL HILL, NORTH CAROLINA

4/25/08

architect

the office of **S. THOMAS SHUMATE, JR.**

PROJECT NO. SHEET TITLE

DWG. NO.

M-1

DATE

DATE BY APP.

REVISIONS

No.

BALEIGH, N. C. 27602

ADDITION TO ACE HARDWARE

FLOOR PLAN - HVAC

(CARY, NORTH CAROLINA)

ENGINEERING AND DESIGN PROPERTY OF S. THOMAS SHUMATE, JR.

Chd.

Dwn.