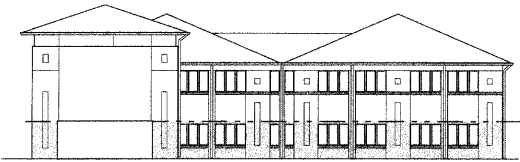
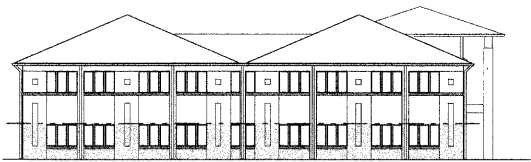


TRANSPARENCY (LOWER LEVEL)



GROUND FLOOR
LOWER FASADE AREA: 1,237 SF
TRANSPARENT AREA: 494 SF
TRANSPARENCY VALUE: 40% (35% MIN. REQUIRED)



GROUND FLOOR
LOWER FASADE AREA: 990 SF
TRANSPARENT AREA: 352 SF
TRANSPARENCY VALUE: 36% (25% MIN. REQUIRED)



GROUND FLOOR
LOWER FASADE AREA: 612 SF
TRANSPARENT AREA: 259 SF
TRANSPARENCY VALUE: 42% (35% MIN. REQUIRED)



GROUND FLOOR
LOWER FASADE AREA: 678 SF
TRANSPARENT AREA: 355 SF
TRANSPARENCY VALUE: 52% (35% MIN. REQUIRED)

TRANSPARENCY (UPPER LEVEL)



UPPER FLOOR
LOWER FASADE AREA: 1,800 SF
TRANSPARENT AREA: 312 SF
TRANSPARENCY VALUE: 18% (20% MIN. REQUIRED)



UPPER FLOOR
LOWER FASADE AREA: 1,400 SF
TRANSPARENT AREA: 352 SF
TRANSPARENCY VALUE: 25% (20% MIN. REQUIRED)

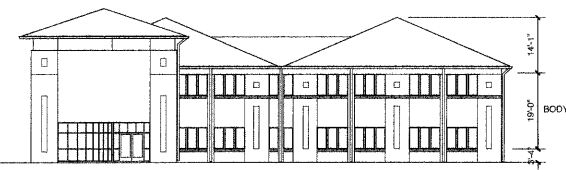


UPPER FLOOR
LOWER FASADE AREA: 868 SF
TRANSPARENT AREA: 203 SF
TRANSPARENCY VALUE: 23% (20% MIN. REQUIRED)

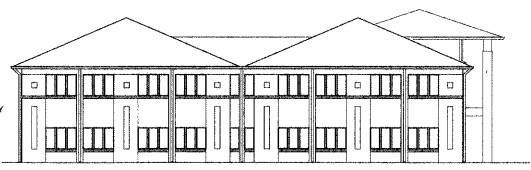


UPPER FLOOR
LOWER FASADE AREA: 1,200 SF
TRANSPARENT AREA: 163 SF
TRANSPARENCY VALUE: 13% (20% MIN. REQUIRED)

ARTICULATION

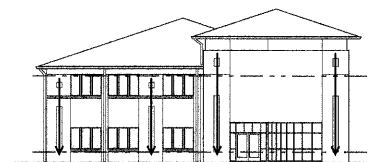
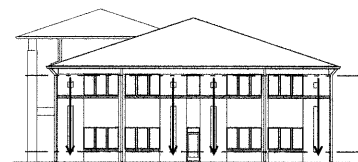
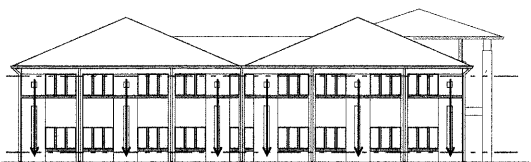
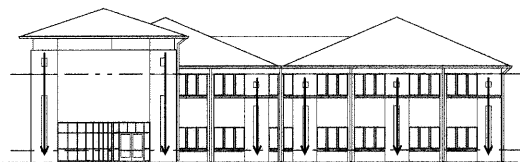


TOTAL BUILDING HEIGHT: 36'-0"
MINIMUM HEIGHT OF BODY: (x.50) = 16'-4"



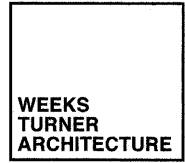
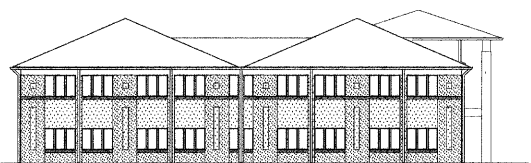
TOTAL BUILDING HEIGHT: 36'-4"
MINIMUM HEIGHT OF BODY: (x.50) = 16'-4"

EXPRESSION



COLORS

- PRIMARY COLOR 1:
SPILT-FACED BLOCK (OLDCASTLE: A505
PECAN, CULTURED STONE)
- PRIMARY COLOR 2:



WEEKS TURNER ARCHITECTURE, PA
2305-109 Durham Drive
Raleigh, North Carolina 27603
919.779.9700 Fax: 919.779.0826
www.weeksturner.com

Cary Project Number 05-SP-154
APPROVED
TOWN OF CARY
Approved by: *[Signature]* Date: 2/21/07
Planning: *[Signature]* Date: 1/12/07
Engineering: *[Signature]* Date: 4/13/07

PROJECT TITLE
**ADVANTAGE GROUP
REALTY IV**
2120 HIGH HOUSE ROAD
CARY, NORTH CAROLINA

PROJECT NO.
0501a
DRAWING TITLE
**COMMUNITY
APPEARANCE SHEET**

A3

PLOT DATE 4/11/06

This original sheet is 24" x 36"; other dimensions
indicated in this sheet.
All information on this sheet is the property of
Weeks Turner Architecture and may not be
reproduced in whole or in part without written
authorization from Weeks Turner Architecture 2004 ©