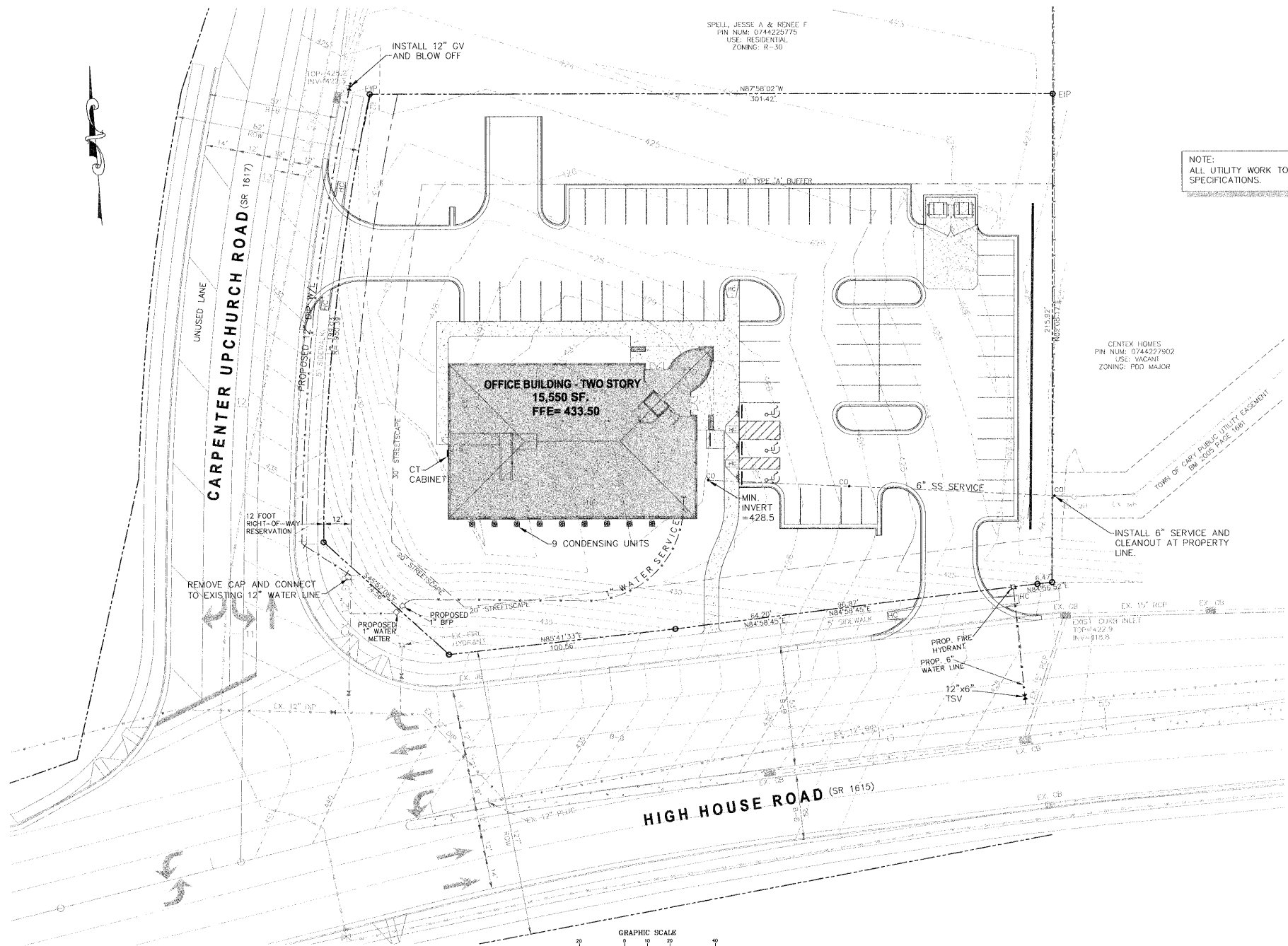


SPELL, JESSE A & RONEE F
 PIN NUM: 074422775
 USE: RESIDENTIAL
 ZONING: R-30

NOTE:
 ALL UTILITY WORK TO CONFORM TO TOWN OF CARY STANDARDS AND SPECIFICATIONS.



CENTEX HOMES
 PIN NUM: 0744227902
 USE: VACANT
 ZONING: FDD MAJOR

TOWN OF CARY PUBLIC UTILITY EASEMENT
 20' 2005 PARCE 000

H:\LD\72\PROJECT\72\6437\ASDW\103\H02\SD\NOV04\57_CS_UTLTY.dwg, 11/20/05 10:49:59 AM, SWIN, \DCL\SERVICES\dwg\p\6202_Arch-C\24307.dwg, 11

REVISIONS	
1.	01-27-06 REVISED PER TOWN OF CARY 1st REVIEW
2.	03-10-06 REVISED PER TOWN OF CARY 2nd REVIEW

ADVANTAGE REALTY GROUP IV
 OFFICE BUILDING
 2128 HIGH HOUSE ROAD
 CARY NC

SCALE: 1"=20'
 ORIGINAL DATE: 12-16-05
 LATEST REVISION DATE: 03-10-06
 PROJECT NO: 04-157

05-SP-154
 UTILITY PLAN



DEVELOPMENT ENGINEERING, INC.
 Professional Engineering Consultants

244 W. Millbrook Road, Raleigh, NC 27609
 P. O. Box 17705, Raleigh, NC 27619
 Phone: 919-847-8300
 Fax: 919-847-2130
 E-mail: Office@d-e-inc.com

Cary Project Number
 05-SP-154
 APPROVED
 TOWN OF CARY

Approved by: [Signature] Date: 3/31/06
 Planning: [Signature] Date: 3/31/06
 Engineering: [Signature] Date: 4/12/06

SHEET NO.
5

FINAL PLAN - NOT RELEASED FOR CONSTRUCTION