

Revisions

5 SEPTEMBER 1987
REVISED GRADING
& TOPO.

NOV 2, 1987 - REVISED
FLOOD PLAIN ELEV.

JAN 3, 1988 - REVISED
GRADING.



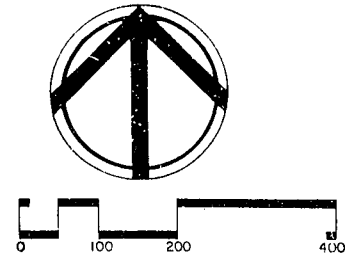
Project
**AERIAL CENTER
EXECUTIVE PARK**

GRADING &
EROSION CONTROL

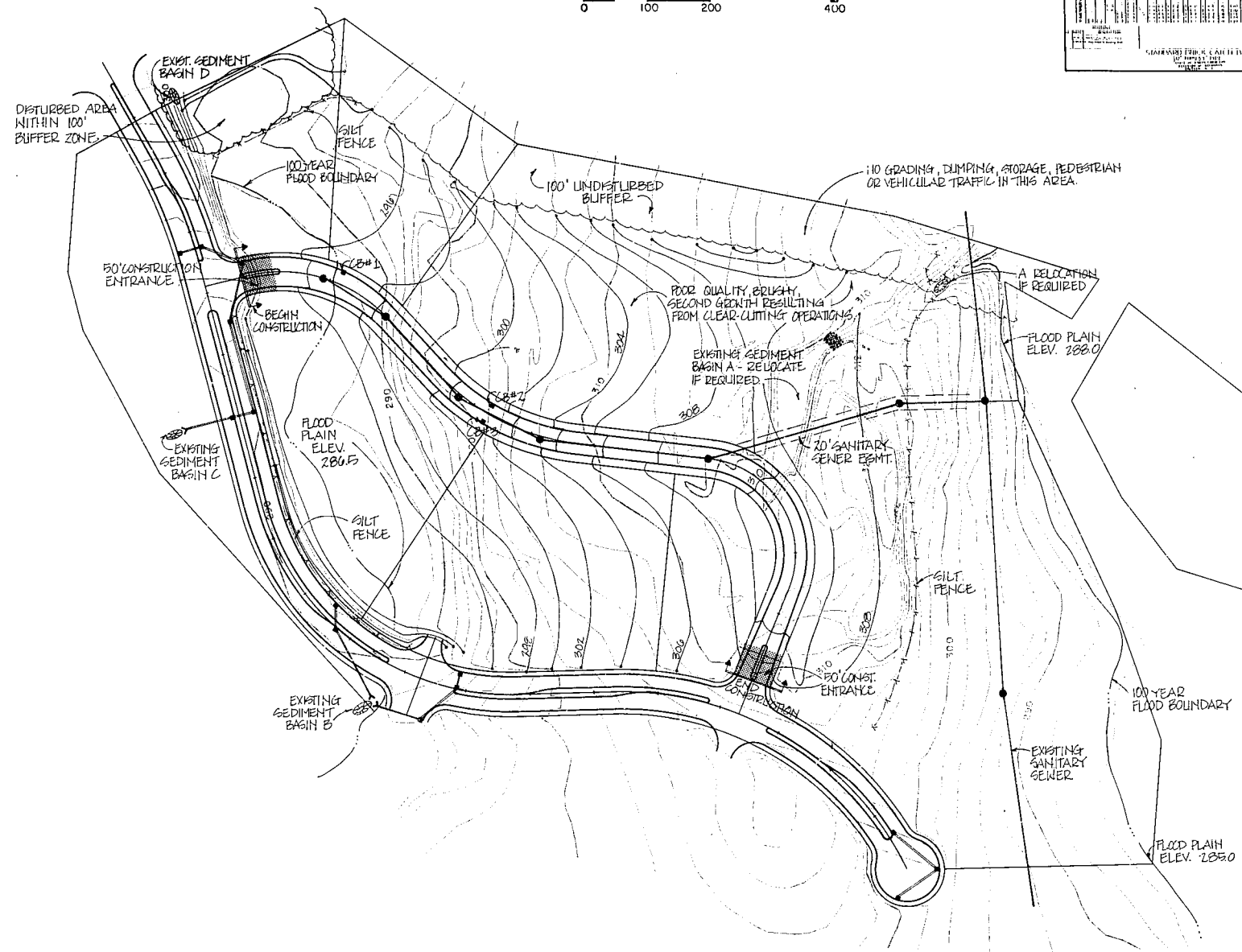
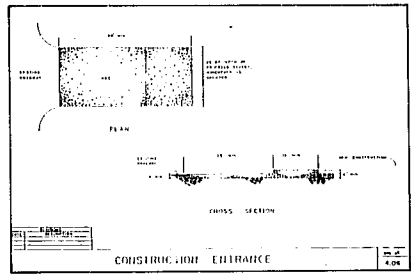
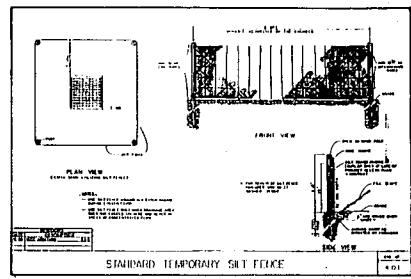
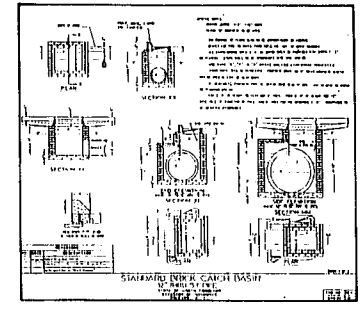
Date
AUGUST 12, 1987

Scale
1" = 100'

Sheet
5



NO.	DESCRIPTION	DATE
1	ISSUED FOR PERMITS	10/15/87
2	REVISED GRADING	11/2/87
3	REVISED FLOOD PLAIN ELEV.	11/2/87
4	REVISED GRADING	1/3/88



TEMPORARY SEDIMENT BASIN AND OUTFLET PROTECTION SCHEDULES

Structure Identification	Structure Type	Disturbance Area (sq ft)	Temporary Sediment Basin				Outlet Protection			
			Volume (cu ft)	Depth (ft)	Length (ft)	Width (ft)	Depth (ft)	Length (ft)	Width (ft)	Material
A	1.0	2180	4	23	23					
B	4.0	41.1	7750	5	36	34	1	14	12	
C	5.0	54.7	10250	2	48	48	1	14	17	
D	6.0	40.0	4	32	12					

NOTES: Temporary sediment basin volume is based upon 1000 cubic feet of sediment per acre of disturbed area.
Sediment basins 12" x 24" x 24" are required basins and shall be cleaned and refilled according to this sheet.
Sediment basins shall be inspected by the contractor on a periodic basis along with the 10' x 10' x 10' erosion basins and shall be cleaned and refilled according to this sheet.
Adjustment of the size or location of any sediment basin shall be made to avoid construction equipment being struck or operated in the direction of the flow of any erosion control device.
Outlet protection design is based on "Standard and Specifications for Soil Erosion and Sediment Control in Developing Areas", Soil Conservation Service. 100' x 10' x 10' erosion basins shall be used with a minimum of 12 inch of depth. 100' x 10' x 10' erosion basins shall be used with a minimum of 12 inch depth.
Outlet protection is designed for theoretical full local development.

STORMWATER COLLECTION SYSTEM

FROM TO	DIAMETER (inches)	LENGTH (feet)	DISCHARGE (cfs)	SLOPE (ft/ft)	INVERT ELEVATION (ft)	CONCRETE SPREAD (sq ft)
Basin 1	36	167.00	5.5	0.81	287.50	286.00
1	36	205.00	6.0	0.80	286.20	282.20
2	36	35.00	6.0	1.14	282.40	282.40

Notes: All pipe is reinforced concrete pipe, ASTM C-76, Class 3. Discharge refers to the temporary event. All pipes are sized to accommodate future site development.

EROSION CONTROL CONSTRUCTION SEQUENCE

- OBTAIN GRADING PERMIT.
- INSTALL ALL EROSION CONTROL MEASURES AS SHOWN.
- OBTAIN CERTIFICATE OF COMPLIANCE THROUGH ON-SITE INSPECTION BY YOUR EROSION CONTROL ENGINEER.
- PROCEED WITH GRADING.
- CLEAN SEDIMENT BASINS WHEN HALF FULL.
- SEED AND MULCH DISTURBED AREAS WITHIN 30 DAYS AFTER FINISHED GRADING IS ESTABLISHED.
- MAINTAIN ALL EROSION CONTROL MEASURES UNTIL PERMANENT GRASS COVER IS ESTABLISHED.
- UPON FINAL APPROVAL BY YOUR EROSION CONTROL ENGINEER, REMOVE ALL EROSION CONTROL DEVICES AND START USE THESE AREAS.

LANDSCAPE RECOMMENDATIONS

1000 SQ. FT. OF DISTURBED SURFACE

Quantity	Plant Material	Size
1	Canopy Tree	6" to 8" tall
1	Understory Tree	4" to 6" tall
1	Emergent Tree	8" tall
4	Emergent Shrub	6" tall or larger upon maturity
4	Deciduous Shrub	6" tall or larger upon maturity
10	Grass Cover	

- SEEDING PREPARATION**
- Clear connected areas and spread topsoil 3 inches deep over adverse soil conditions, if available.
 - Rip the entire disturbed area to 6 inches depth.
 - Remove all loose rocks, roots, and other obstructions leaving surface reasonably smooth and uniform.
 - Apply agricultural lime, fertilizer, and humus/manure uniformly and mix with soil (see notes).
 - Continue tillage until a well pulverized, firm, reasonable uniform seed bed is prepared to 6 inches deep.
 - Seed on a freshly prepared seed bed and cover seed liberally with seeding equipment or cultivate after seeding.
 - Mulch immediately after seeding and anchor mulch.
 - Inspect all seeding areas and take necessary action or reseed within 720 hours of seeding. If reseed should be over 100 hours, reseed following original time, fertilizer, and seeding rates.
 - Consult construction inspector on maintenance treatment and fertilization after permanent cover is established.
- APPLY: Agricultural lime/manure 1 ton/acre
Fertilizer 200-200-000 lbs/acre
Superphosphate 200 lbs/acre
Manure - small grain straw 2 tons/acre
Anchor - liquid animal manure 500 gal/acre
or mulch/straw 200 gal/acre

TABLE 1-1
SHOULDERS, SIDE DITCHES, SLOPES
(Max. 3:1)

Date	Type	Planting Rate
Apr 15 - May 1	Tall Fescue	300 lbs/acre
May 1 - May 8	Tall Fescue and Annual Ryegrass	300 lbs/acre
May 8 - Apr 15	Tall Fescue	300 lbs/acre
Apr 15 - June 30	Mulch Common Bermudagrass	75 lbs/acre
July 15 - Aug 15	Tall Fescue and Annual Ryegrass 1" x 1" Stratum/Lunan Hybrid	75 lbs/acre

Consult Erosion Control Engineer or Soil Conservation Service for additional information concerning other alternatives for protection of exposed areas. The above seeding rates are those which will meet local conditions; other seeding rate combinations are possible.

*** Temporary - Based according to weather season for desired permanent vegetation. Do not allow temporary cover to grow over 12 inches in height before seeding; otherwise failure may be expected.

TABLE 1-2
SHOULDERS, SIDE DITCHES, SLOPES
Slopes 1.5:1 to 2:1

Date	Type	Planting Rate
Apr 1 - June 1	Serviceberry (seedling)	10 lbs/acre
Apr 1 - Apr 15	Red Top Fescue	120 lbs/acre
Apr 1 - June 30	Red Top Fescue	10 lbs/acre
Apr 1 - June 30	Mulch Common Bermudagrass	25 lbs/acre
June 1 - Sep 1	Tall Fescue and Kentucky Bluegrass	120 lbs/acre
June 1 - Sep 1	Tall Fescue and Kentucky Bluegrass	30 lbs/acre
Sep 1 - Mar 1	Serviceberry (seedling) and Tall Fescue	75 lbs/acre
Mar 1 - Mar 8	Red Top Fescue and Annual Ryegrass	120 lbs/acre

Consult Erosion Control Engineer or Soil Conservation Service for additional information concerning other alternatives for protection of exposed areas. The above seeding rates are those which will meet local conditions; other seeding rate combinations are possible.

*** Temporary - Based according to weather season for desired permanent vegetation. Do not allow temporary cover to grow over 12 inches in height before seeding; otherwise failure may be expected.