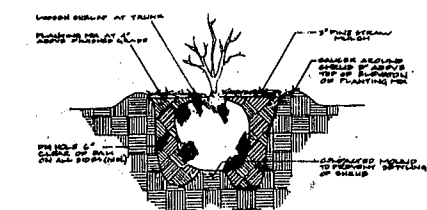
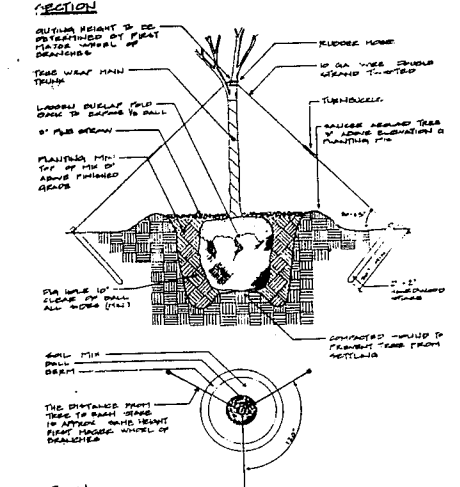


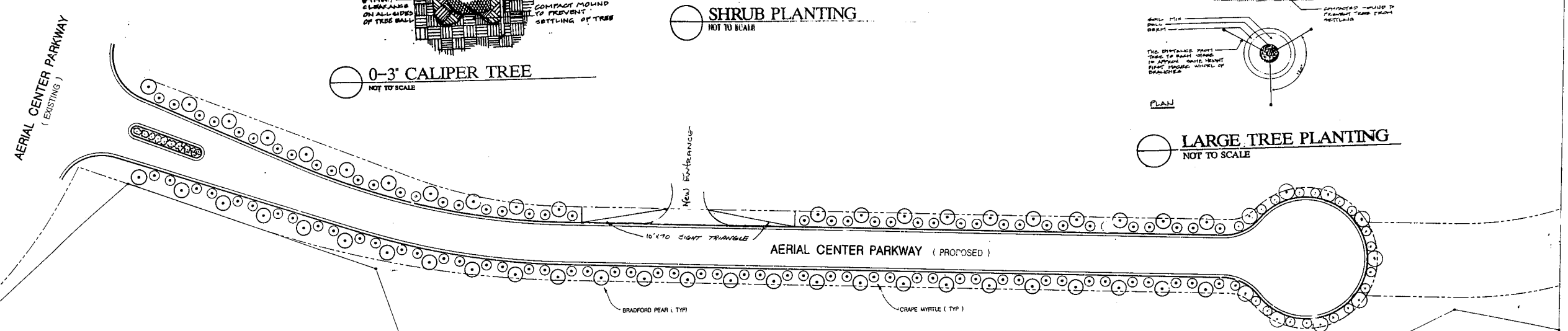
0-3' CALIPER TREE
NOT TO SCALE



SHRUB PLANTING
NOT TO SCALE



LARGE TREE PLANTING
NOT TO SCALE



PLANT LIST

Key	Botanical Names	Common Names	Quantity	Size	Remarks
Shade Trees - all trees D & B					
⊙	Lagerstroemia indica	Crepe Myrtle	132	8'-10'	Well matched tree form
⊙	Pyrus calleryana	Bradford pear	48	2 1/2"	"Bradford"
Shrubs					
⊙	Prunus laurocerasus	Skip laurel	44	3 gal.	"Schipkaensis"

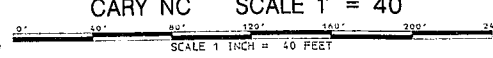
- SEEDBED PREPARATION**
- CHISEL COMPACTED AREAS AND SPREAD TOPSOIL 3 INCHES DEEP OVER ADVERSE SOIL CONDITIONS, IF AVAILABLE.
 - RIP THE ENTIRE AREA TO 6 INCHES DEPTH.
 - REMOVE ALL LOOSE ROCK, ROOTS, AND OTHER OBSTRUCTIONS LEAVING SURFACE REASONABLY SMOOTH AND UNIFORM.
 - APPLY AGRICULTURAL LIME, FERTILIZER, AND SUPERPHOSPHATE UNIFORMLY AND MIX WITH SOIL (SEE BELOW).
 - CONTINUE TILAGE UNTIL A WELL-PULVERIZED, FIRM, REASONABLE UNIFORM SEEDBED IS PREPARED 4 TO 6 INCHES DEEP.
 - SEED ON A FRESHLY PREPARED SEEDBED AND COVER SEED LIGHTLY WITH SEEDING EQUIPMENT OR CULTIPACK AFTER SEEDING.
 - MULCH IMMEDIATELY AFTER SEEDING AND ANCHOR MULCH.
 - INSPECT ALL SEEDBED AREAS AND MAKE NECESSARY REPAIRS OR RESEEDINGS WITHIN THE PLANTING SEASON, IF POSSIBLE. IF STAND SHOULD BE OVER 60% DAMAGED, REESTABLISH FOLLOWING ORIGINAL LIME, FERTILIZER, AND SEEDING RATES.
 - CONSULT CONSERVATION INSPECTOR ON MAINTENANCE TREATMENT AND FERTILIZATION AFTER PERMANENT COVER IS ESTABLISHED.

*APPLY: AGRICULTURAL LIMESTONE-2TONS/ACRE
FERTILIZER - 10-10-10 ANALYSIS AT 800 - 1,000 LBS/ACRE
SUPERPHOSPHATE - 500 LBS/ACRE OF 20% ANALYSIS SUPERPHOSPHATE
MULCH - 2 TONS (APPROX. 80 BALES) SMALL GRAIN STRAW/ACRE
ANCHOR - TACK WITH LIQUID ASPHALT AT 400 GALLONS/ACRE OR EMULSIFIED ASPHALT AT 300 GALLONS/ACRE

- SEEDING SPECIFICATIONS**
- Lime: Apply 3 tons/acre (135 bbl./1000 SF). Disc into top 6".
 - Fertilizer: Apply 1000 lbs./acre 10-10-10. Apply 800 lbs./acre 20% Super Phosphate. Disc into top 6".
 - Seed: SEEDING TIME SEED

August - October	200 lbs./acre Poscue "Rebel"
February - May	
November - February	200 lbs./acre Poscue "Rebel" and 25 lbs./acre Rye.
June - August	12 lbs./acre Common Bermuda Grass (hulled).
 - Mulch: Apply 1-1/2 tons/acre wheat straw on all seeded areas.
 - Tack: All slopes exceeding 3:1 to have asphalt tack applied at the rate of 22.5 gal/acre.

AERIAL CENTER PARKWAY SEC II
SITE LANDSCAPE PLAN
CARY NC SCALE 1" = 40'



MURPHY YELLE ASSOCIATES, REGISTERED LAND SURVEYORS, RALEIGH, NC 787-7873

SHEET 3 OF 4

B5-233B