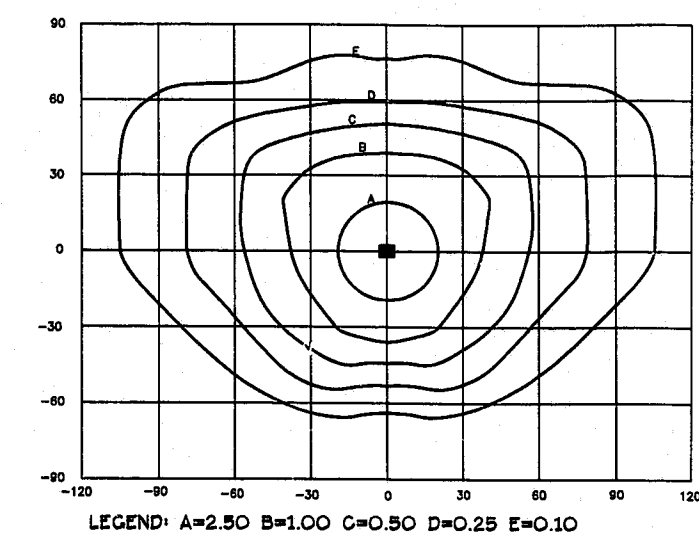


**ISOFOOT-CANDLE CURVES**

FIXTURE STYLE: SHOEBOX  
 MOUNTING HEIGHT: 30 FT.  
 LAMP: 200W, 22,000 LUMENS, SODIUM VAPOR  
 PATTERN: TYPE III CUTOFF  
 POLE & FIXTURE COLOR: DARK BRONZE  
 POLE TYPE: SQUARE (CP&L "THE PARKWAY")  
 NOTE: THE FOOT CANDLE READINGS BELOW ARE INITIAL AND HAVE NOT BEEN DEPRECIATED FOR LAMP LUMEN DEPRECIATION AND LUMINAIRE DIRT DEPRECIATION. FOR MAINTAINED FOOTCANDLES, MULTIPLY THE READINGS BELOW BY 0.72.



**LIGHTING NOTES**

ALL EXTERIOR SITE LIGHTING WILL BE DESIGNED TO PREVENT OFF-SITE GLARE.  
 THE DEVELOPER OF AIRPORT GATEWAY CENTER WILL BE RESPONSIBLE FOR ALL INSTALLATION COSTS ASSOCIATED WITH STREET LIGHTING ALONG ALL PROPOSED STREETS, ADJACENT STREETS AND THOROUGHFARES AS REQUIRED PER TOWN OF CARY POLICY STATEMENT NO. 13. THE DEVELOPER SHALL CONTACT CAROLINA POWER AND LIGHT COMPANY AFTER PLAN APPROVAL AND PRIOR TO CONSTRUCTION IN ORDER TO DEVELOP A STREET LIGHTING PLAN FOR THE SITE/SUBDIVISION PLANS.

**dda**  
**D'Amato**  
**Design**  
**Associates**

Land Planning  
 Site Design  
 Landscape Architecture  
 5500 McNeely Drive, Suite 203  
 Raleigh, North Carolina 27612  
 Tel. 919.786.0040  
 Fax 919.786.4554  
 davedamato@aol.com

Design By: DED  
 Drawn By: DED  
 Checked By: DED  
 Date: 6 DEC. 1999  
 Proj#: 9811001

Revisions:  
 1ST REVIEW - 7 FEB. 2000  
 2ND REVIEW - 6 MAR. 2000

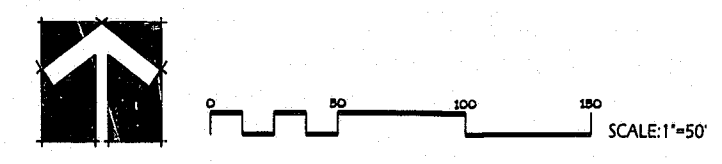
**AIRPORT PARKING**

AT AIRGATE DRIVE  
 CARY, NORTH CAROLINA

DEVELOPER:  
 PARKER HALL, LLC  
 C/O  
 5500 McNEELY DRIVE  
 SUITE 203  
 RALEIGH, NC 27612

CIVIL ENGINEER:  
 LANDSTAR ENGINEERING  
 1124 IVY LANE  
 CARY, NC 27511  
 919.461.2420

**ISOLUX LIGHTING PLAN**



FOR REVIEW ONLY- NOT FOR CONSTRUCTION

Sheet  
 of 8 **SP-4**