

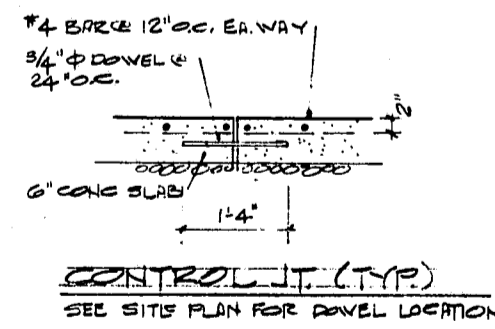
EXISTING 2 1/2" CONC. APRON
EXISTING 30'-0" W B-D
ONE-WAY DRIVE

NEW 6" W. YELLOW STRIPED 4" W/NO
PARKING - TRUCK LOADING AREA - TO
MEET LOCAL AUTHORITY STANDARDS

LOWELLED CONTROL JT.
(EAST/WEST ONLY) TO RUN
W/FACE OF DOCK/FIT DOCK
TYP EVERY 3RD BAY

NEW 6" CONC. SLAB W/ #4
BAR @ 12" OC. EA. WAY ON
6" ABC & COMPACTED EARTH

CONTROL JT. (NORTH/SOUTH)
@ RIGHT W/FACE OF DOCK/
FIT DOCK @ EA. CORNER



SITE PLAN
SCALE: 1" = 40'-0"

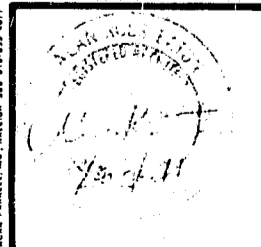
D.C.B.
CARY FIRE
7-16-91

APPROVED
DATE: 7-16-91
BY: JH TUCKER
TOWN OF CARY
ENGINEERING DEPARTMENT

APPROVED
[Signature]
Date: 7/17/91

Theresa S. Type
7/17/91

AD-33-91



ALAN R. EATON, AIA
ARCHITECT/PLANNER
3020 LAKE WHEELER ROAD • RALEIGH, NORTH CAROLINA 27603 • 919-839-8319

SITE PLAN

DOCK MODIFICATIONS TO:
AIRPORT DISTRIBUTION CENTER
NELSON RD & NC 1789
CARY, N.C.

NOTICE: THESE DOCUMENTS ARE INSTRUMENTS OF SERVICE AND AS SUCH REMAIN THE PROPERTY OF THE ARCHITECT. PUBLISHED OR USE THEM ONLY WITH ARCHITECT'S WRITTEN APPROVAL.	REVISIONS:	DATE:
	9, JULY '91	6/22/91
CHECKED BY:	DRAWN BY:	APPROVED:

