



AIRPORT GATEWAY
AIRPORT BLVD
CARY PROJECT NO. 97-SB-031
SKETCH PLAN - SUBDIVISION

V FIVE, LLC
400 ASHEVILLE AVE
CARY, N.C. 27611

PROJECT NO. 01098

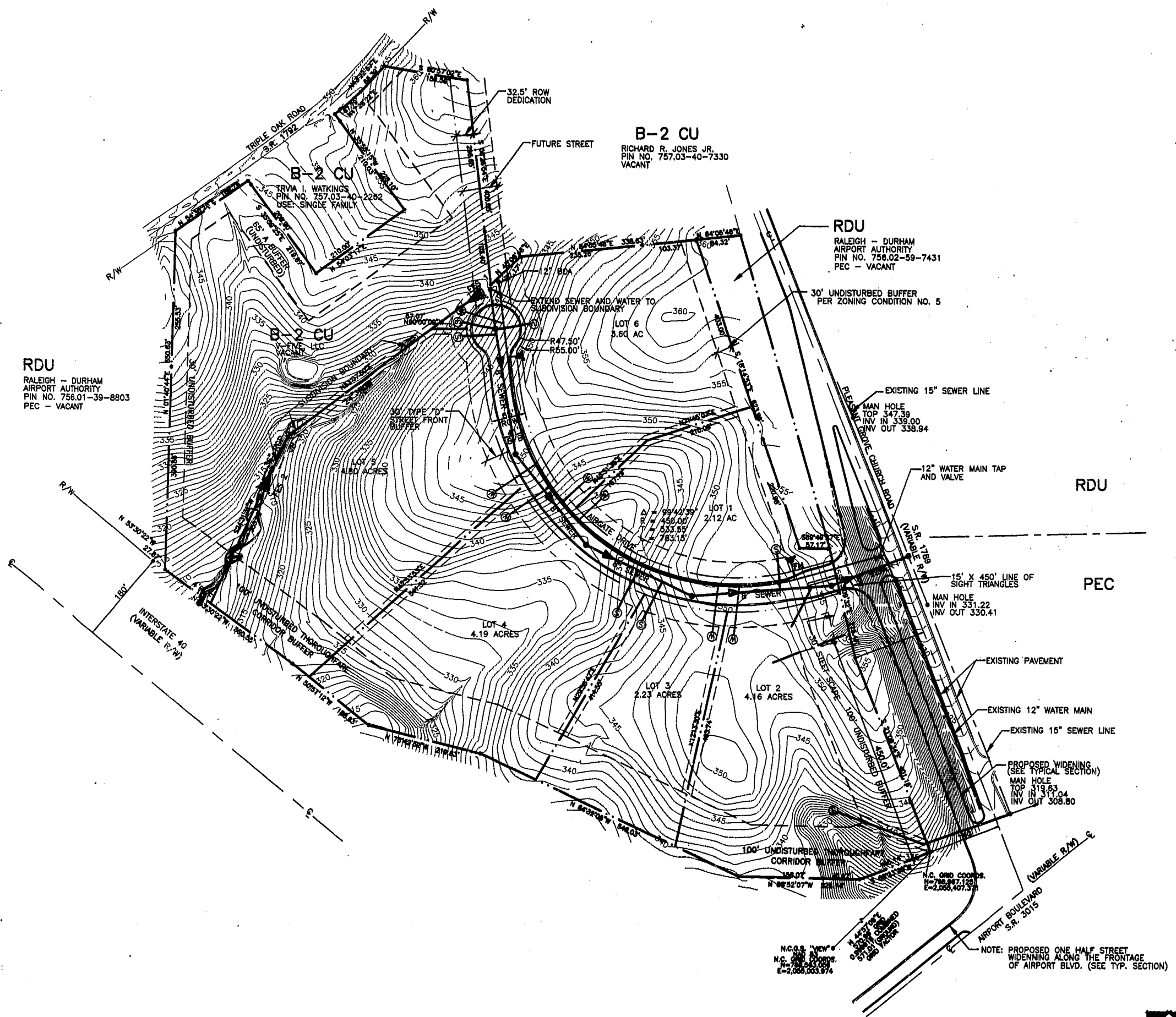
DATE: JANUARY, 1998

REVISIONS:
2-2-98
2-17-98

SHEET NO.

2

OF 2 SHEETS



MINIMUM BUILDING SETBACKS

PLEASANT GROVE CHURCH ROAD: 50 FEET
(30 FT. WHERE NO VEHICULAR AREA IS LOCATED IN THE REQUIRED YARD.)
INTERIOR STREET: 30 FEET.
BUFFER SETBACK: 10 FEET FOR PRINCIPAL BUILDINGS
5 FT. FOR PARKING ACCESSORY STRUCTURES.
NOTE: ALL INTERIOR BUFFERS WILL BE DETERMINED AT SITE PLAN SUBMITTAL.

LOT TABULATION

LOT NO.	ACREAGE
LOT 1	2.12 ACRES
LOT 2	4.16 ACRES
LOT 3	2.23 ACRES
LOT 4	4.19 ACRES
LOT 5	4.80 ACRES
LOT 6	3.80 ACRES
ROW	1.93 ACRES
TOTAL	23.04 ACRES

STREETS:	990 LF
WATER:	1070 LF
SEWER:	1095 LF

LEGEND

- SANITARY SEWER MANHOLE
- SANITARY SEWER CLEANOUT
- ▲ FIRE HYDRANT
- STORM JUNCTION BOX
- VAULT W/ BACKFLOW PREVENTER
- ⊕ GATE VALVE
- W — WATER LINE
- SS — SANITARY SEWER LINE
- SD — STORM DRAIN LINE
- U — UTILITY EASEMENT LINE
- ⊙ WATER SERVICE
- ⊙ SEWER SERVICE
- PIN
- ▲ FES

APPROVED
TEL 3/2/98
TM 3-2-98