



AIRPORT GATEWAY
AIRPORT BLVD
CARY PROJECT NO. 97-SB-031
SKETCH PLAN - SUBDIVISION

V FIVE, LLC
400 ASHEVILLE AVE.
CARY, N.C. 27511

PROJECT NO. 010198

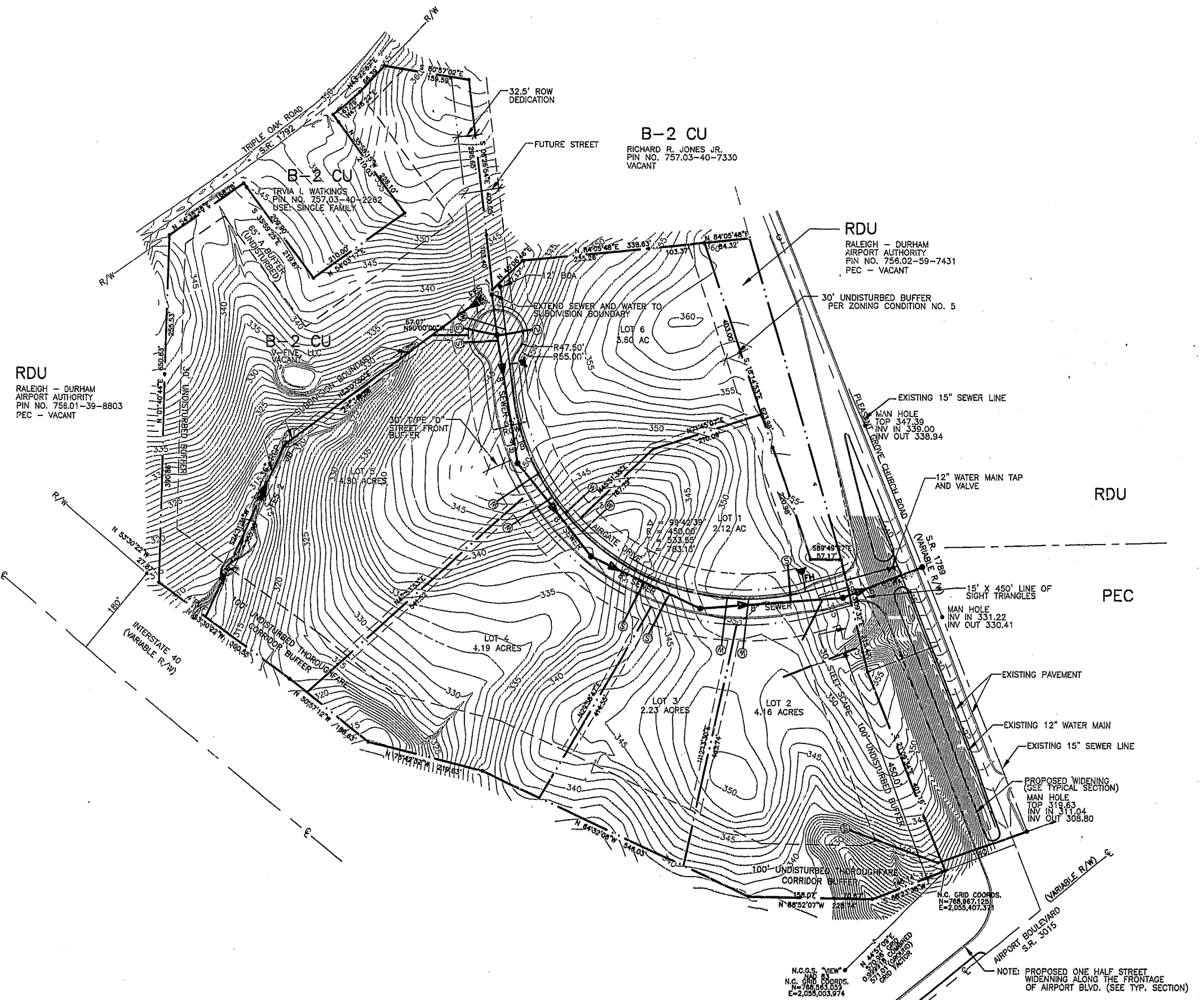
DATE: JANUARY, 1998

REVISIONS:
2-2-98
2-17-98

SHEET NO.

2

OF 2 SHEETS



MINIMUM BUILDING SETBACKS

PLEASANT GROVE CHURCH ROAD: 50 FEET
(30 FT. WHERE NO VEHICULAR AREA IS LOCATED IN THE REQUIRED YARD.)

INTERIOR STREET: 30 FEET.

BUFFER SETBACK: 10 FEET FOR PRINCIPAL BUILDINGS
5 FT. FOR PARKING ACCESSORY STRUCTURES.

NOTE : ALL INTERIOR BUFFERS WILL BE DETERMINED AT SITE PLAN SUBMITTAL.

LOT TABULATION

LOT NO.	ACREAGE
LOT 1	2.12 ACRES
LOT 2	4.16 ACRES
LOT 3	2.23 ACRES
LOT 4	4.19 ACRES
LOT 5	4.80 ACRES
LOT 6	3.60 ACRES
ROW	1.93 ACRES
TOTAL	23.04 ACRES

LEGEND

- SANITARY SEWER MANHOLE
- SANITARY SEWER CLEANOUT
- ▼ FIRE HYDRANT
- STORM JUNCTION BOX
- VAULT W/ BACKFLOW PREVENTER
- ⊕ GATE VALVE
- W WATER LINE
- SS SANITARY SEWER LINE
- SD STORM DRAIN LINE
- U UTILITY EASEMENT LINE
- ⊙ W WATER SERVICE
- ⊙ S SEWER SERVICE
- PIN
- ▲ FES

APPROVED
TER 3/2/98
TM 3-2-98

