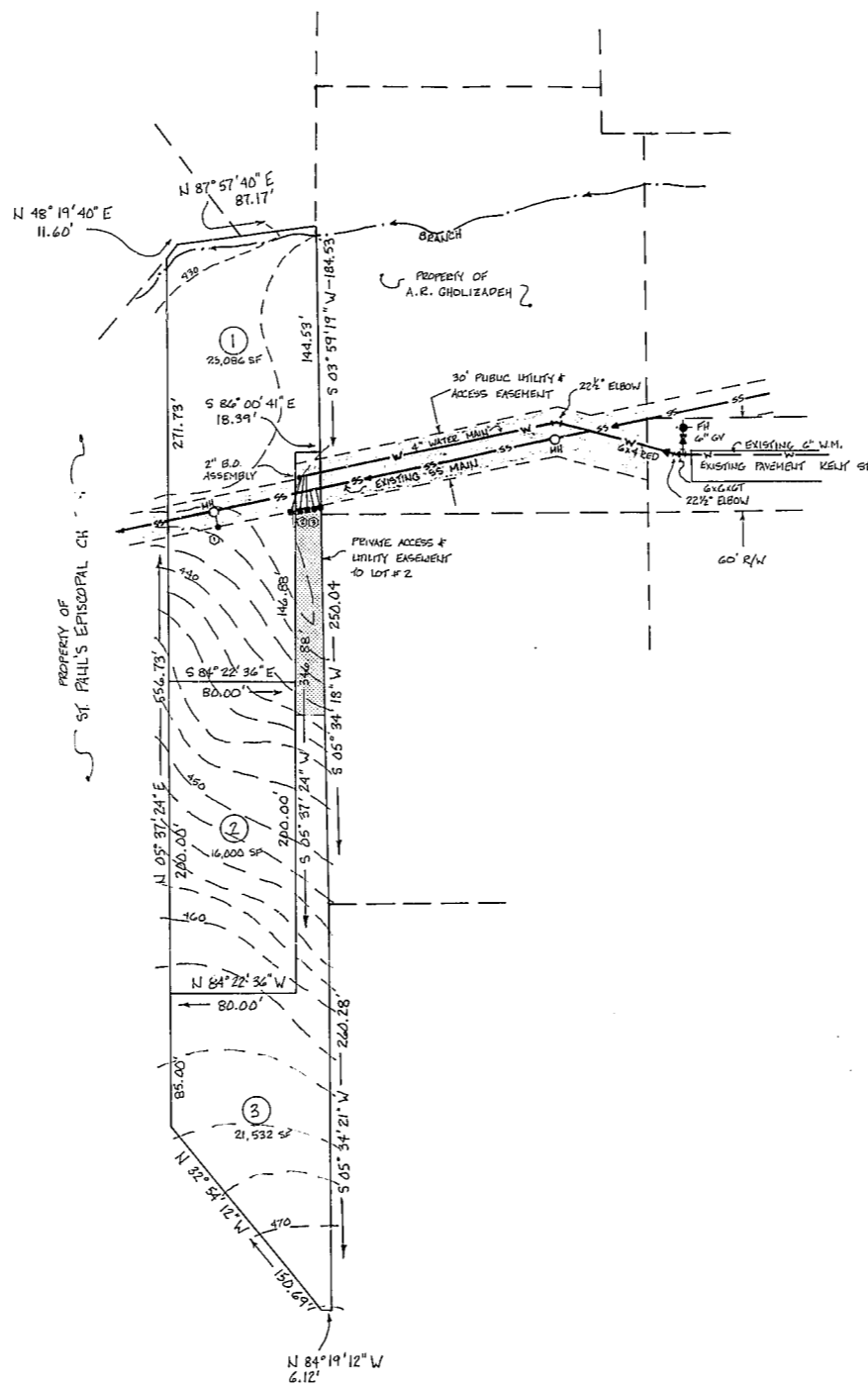




VICINITY MAP



NOTES:

- 1) WATER MAIN SHALL BE 600 CLASS 150 PVC PIPE.
- 2) WATER MAIN TO HAVE MINIMUM COVER OF 3 FEET.
- 3) ALL CONSTRUCTION SHALL BE IN ACCORDANCE WITH TOWN OF CARY STANDARDS.
- 4) DRIVEWAY TO PROTECT AND PROPERTY OF ST. PAUL'S EPISCOPAL CHURCH TO BE 12' GRAVEL DRIVE.
- 5) TRACT AREA = 1.44 AC
- 6) BOUNDARY BY WALTER B. BUNN, R.L.S., TOPO FROM TOWN OF CARY.

LEGEND:

- ⊙ 4" SS SERVICE TO LOT #1
- ⊙ 3/4" WATER SERVICES TO LOTS #1, 2 & 3
- ⊙ 4" SS SERVICES TO LOTS #2 & 3

Public Water System Plans and Specifications	
Approved by	
Department of Human Resources Division of Health Services Environmental Health Section	
Serial No.	07-3116
Date	09-16-06
By	[Signature]



*Preliminary
Not approved
for construction*



PROPERTY OF ALI REZA GHOLIZADEH
BLACKBURN CONSULTING ENGINEERING 2023 SADDLEBROOK DRIVE CLAYTON NC 27520 553-7045
DATE: 9/6/06 SCALE: 1" = 30'

5