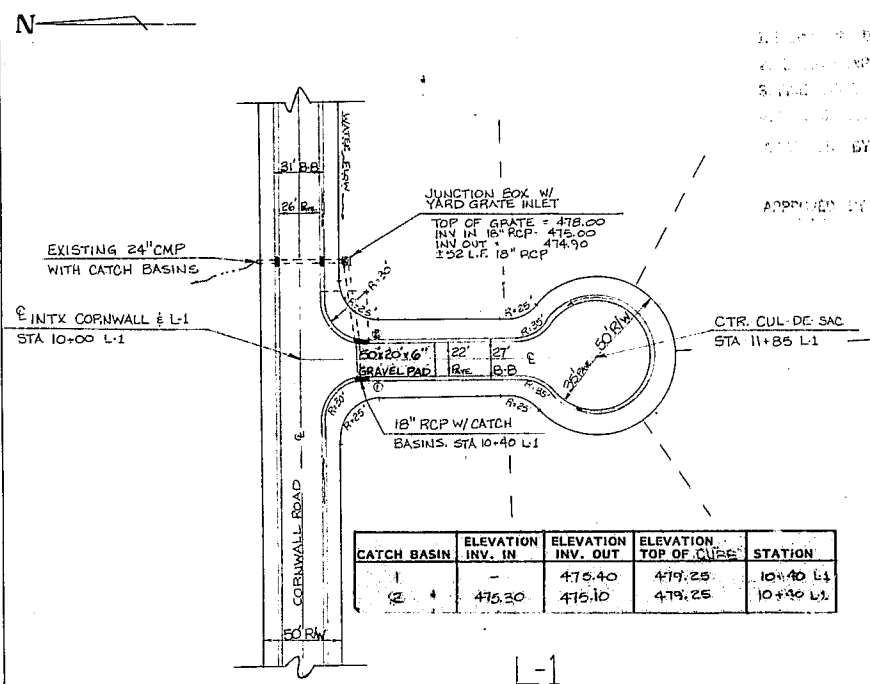


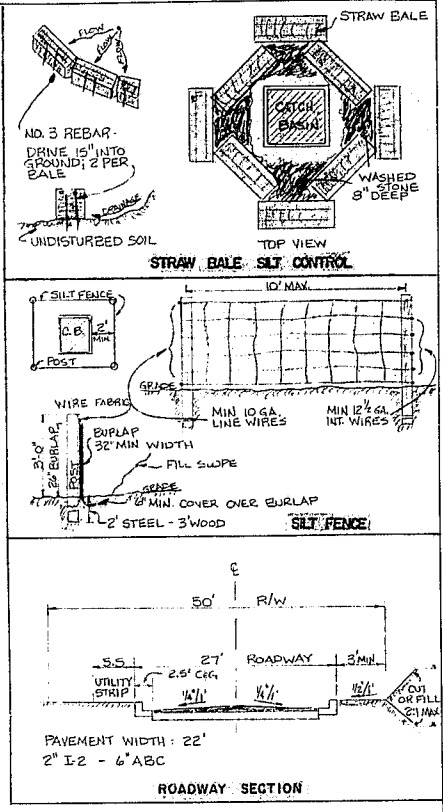
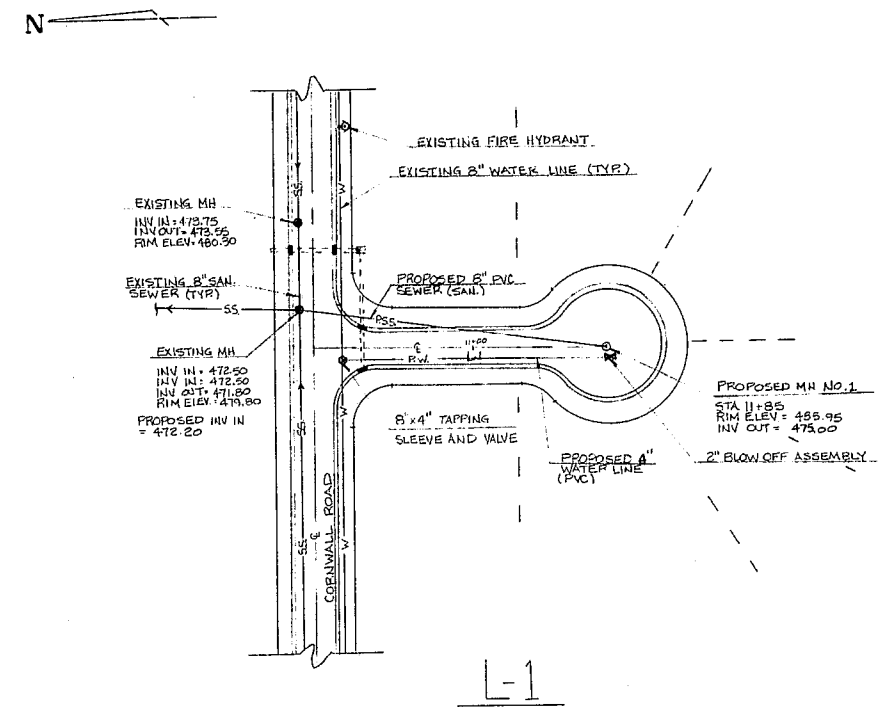
DEPARTMENTAL CHECK LIST  
FOR PLANS

DESIGNED BY: Kamrath, 10/22/86  
 CHECKED BY: \_\_\_\_\_  
 APPROVED BY: \_\_\_\_\_  
 APPROVED BY TOWN COUNCIL: \_\_\_\_\_  
 revised W/L from 6" to 4"



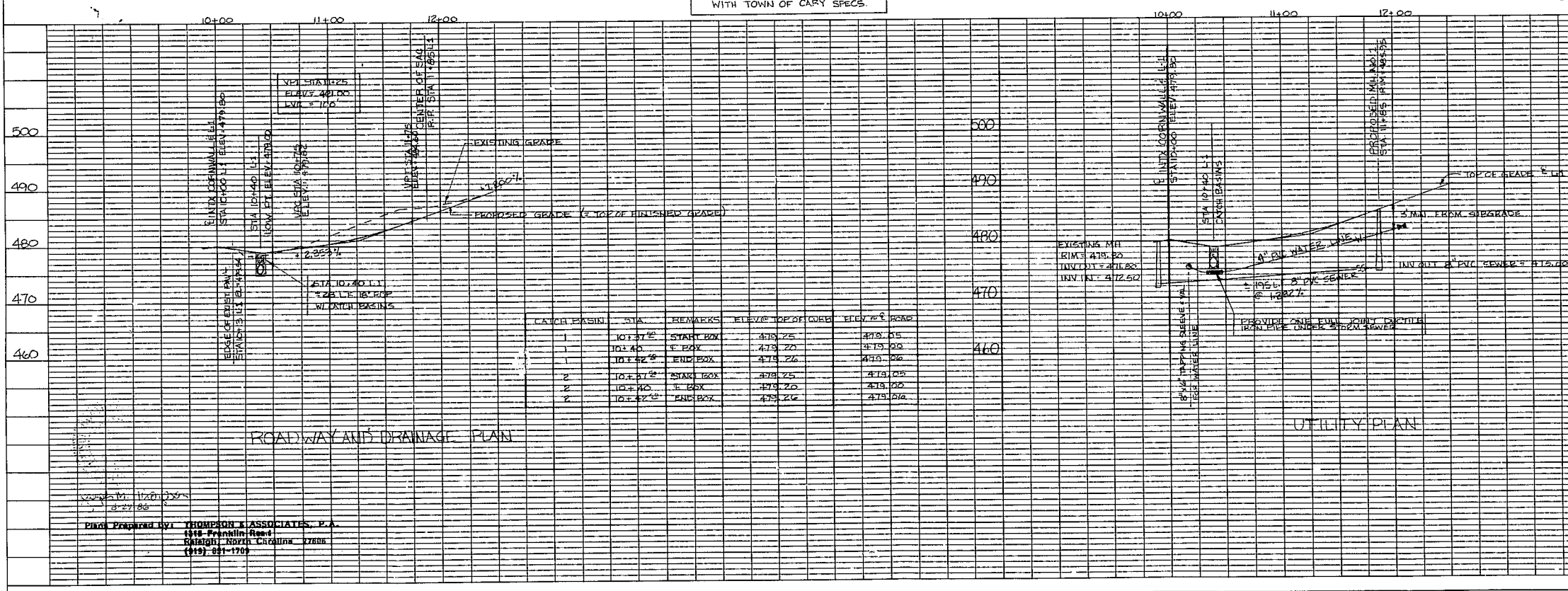
CATCH BASIN	ELEVATION INV. IN	ELEVATION INV. OUT	ELEVATION TOP OF CURB	STATION
1	-	475.40	479.25	10+40 L1
2	475.30	475.10	479.25	10+40 L1

ALL WORK SHALL CONFORM WITH TOWN OF CARY SPECS.



PLAN  
 DRAWN BY: \_\_\_\_\_  
 CHECKED BY: \_\_\_\_\_  
 DATE: \_\_\_\_\_

PROFILE  
 DRAWN BY: \_\_\_\_\_  
 CHECKED BY: \_\_\_\_\_  
 DATE: \_\_\_\_\_



DESIGNED BY: THOMPSON & ASSOCIATES, P.A.  
 415 Franklin Road  
 Raleigh, North Carolina 27606  
 (919) 851-1700

PROPOSED ROADWAY AND UTILITY PLANS FOR  
 ALLEN PROPERTY  
 CARY, WAKE COUNTY  
 NORTH CAROLINA