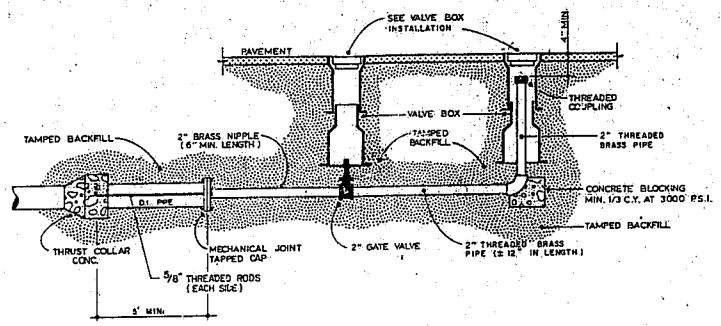
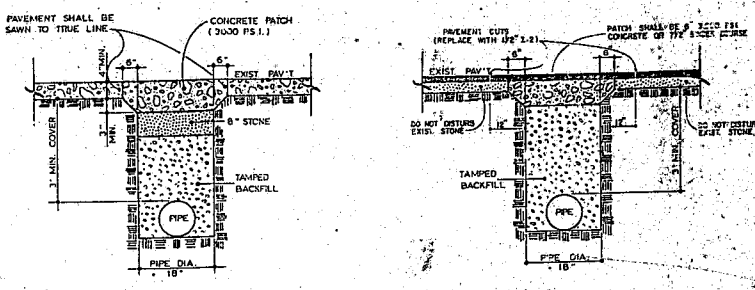


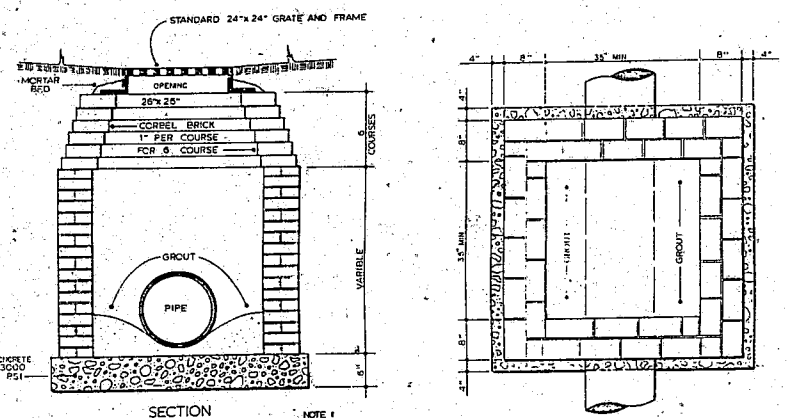
STANDARD PRECAST MANHOLE SECTIONS FOR 4' MANHOLES  
7.03



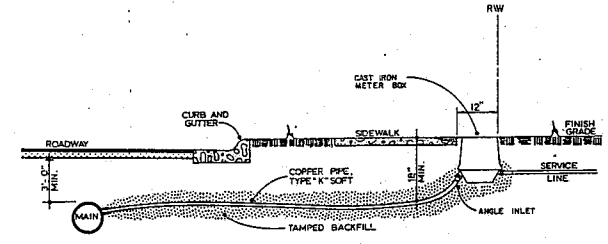
STANDARD 2" BLOW-OFF ASSEMBLY  
6.04



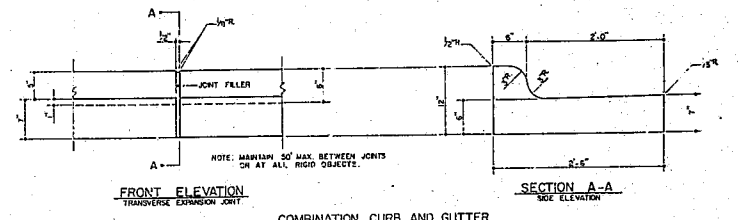
STANDARD TRENCH AND PAVEMENT REPAIR SECTIONS  
3.05



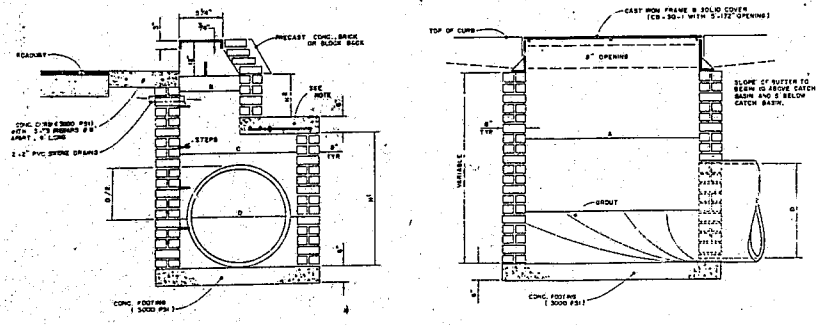
STANDARD YARD INLET WITH GRATE AND FRAME  
8.02



STANDARD 3/4" AND 1" METER BOX INSTALLATION  
6.01

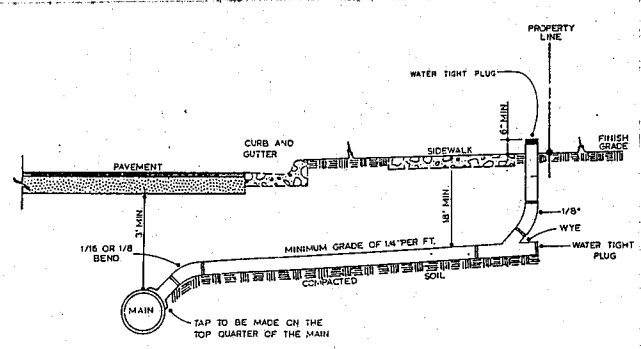


STANDARD CONCRETE CURB AND GUTTER  
4.01

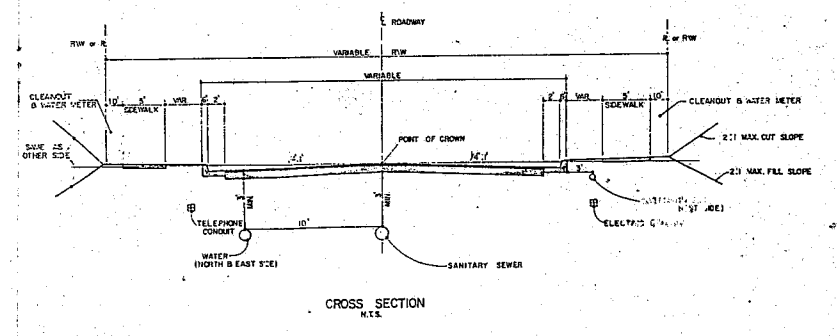


STANDARD OPEN-THROATED CATCH BASIN  
8.03

NO.	DESCRIPTION	QUANTITY	REMARKS
1	BRICK	1000	FOR CATCH BASIN
2	CONCRETE	1000	FOR CATCH BASIN
3	PIPE	1000	FOR CATCH BASIN
4	GRATE	1000	FOR CATCH BASIN
5	FRAME	1000	FOR CATCH BASIN
6	BACKFILL	1000	FOR CATCH BASIN
7	CONCRETE PATCH	1000	FOR CATCH BASIN
8	CONCRETE BLOCKING	1000	FOR CATCH BASIN
9	CONCRETE CURB	1000	FOR CATCH BASIN
10	CONCRETE GUTTER	1000	FOR CATCH BASIN



STANDARD SANITARY SEWER TAP AND SERVICE  
7.01



STANDARD STREET CROSS SECTION SHOWING UTILITY LOCATIONS  
3.06



THOMPSON and ASSOCIATES

REVISIONS		UTILITY DETAILS	
		FOR: ALLEN PROPERTY	
OWNER:		ENGINEERS:	
CHECKED BY:		THOMPSON and ASSOCIATES, PA.	
DATE:		1215 JONES-FRANKLIN ROAD	
		RALEIGH, N. CAROLINA	
		(919) 851-1709 27606	
		DRAWN BY:	
		DATE:	