

PROJECT: 014024  
DATE: 06.26.2014

REVISIONS:	DATE
Resp to 1st Rev. Cmmts	08.28.14
Resp to 2nd Rev. Cmmts	11.13.14
Resp to 3rd Rev. Cmmts	01.08.15
Resp to 4th Rev. Cmmts	02.13.15
S Plan Min. Rev 1st Sub.	07.09.15
Resp to Cmmts	08.27.15

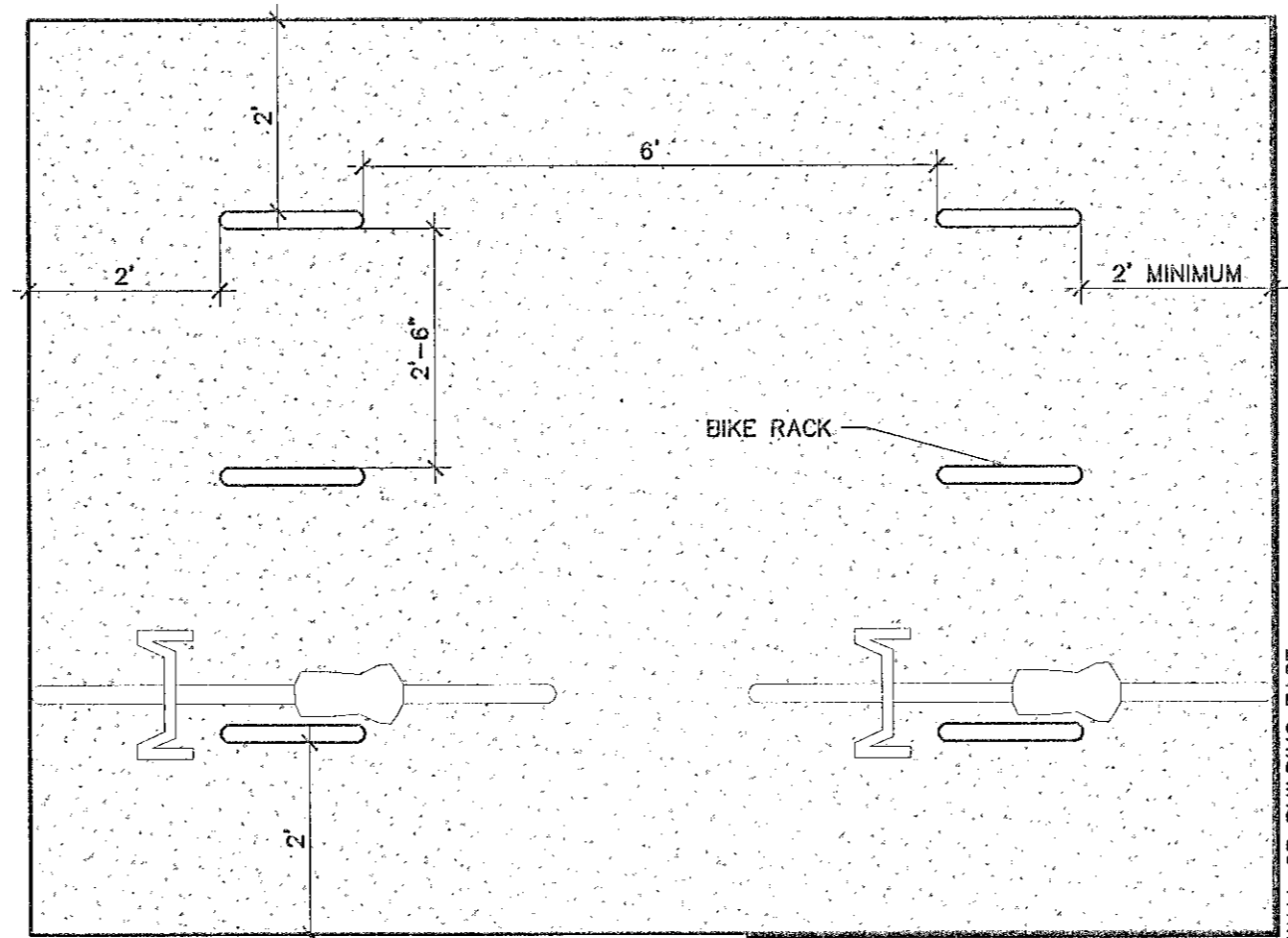
DRAWN BY: SP  
CHECKED BY: ML  
Site  
Details

NOT IN USE 04

NOT IN USE 03

NOT IN USE 02

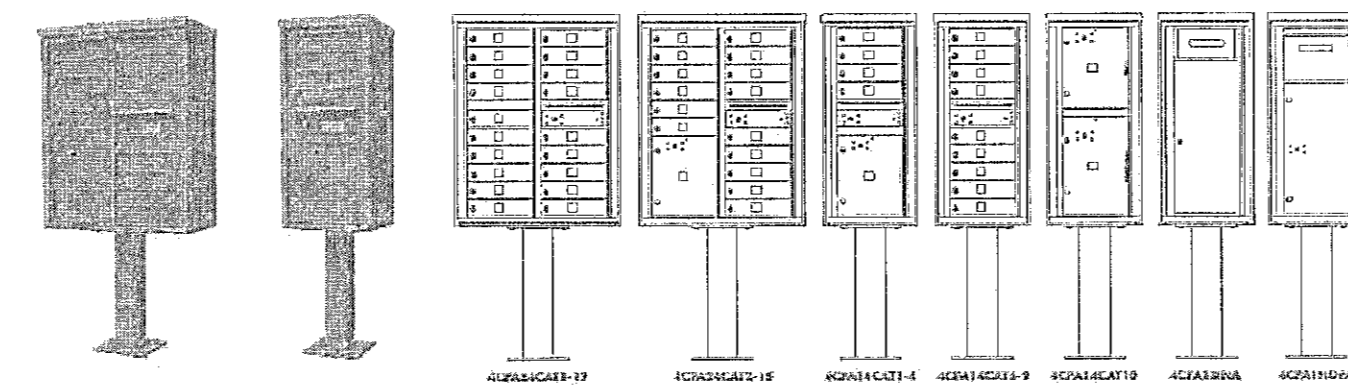
- NOTE:  
1. BIKE RACK TO BE "FORMS AND SURFACES GARDEN BIKE RACK" OR EQUIVALENT APPROVED BY WFM (TYP)  
2. ALL DIMENSIONS TYPICAL  
3. TYPICAL LAYOUT, SEE SHEET SD1.30 FOR CONFIGURATION



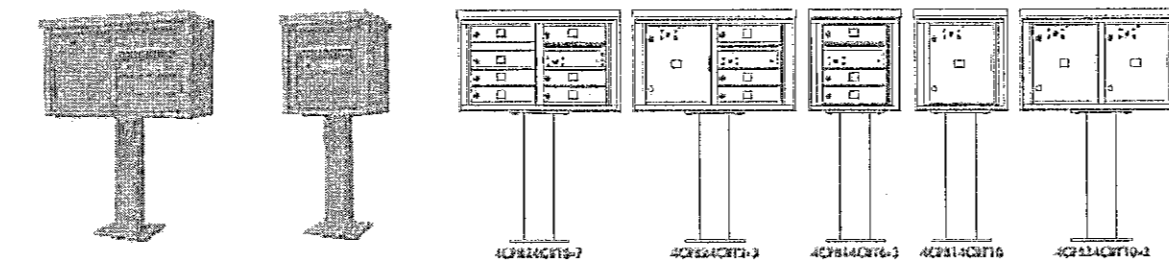
**BIKE RACK 06**

Scale: 1/2" = 1'-0"

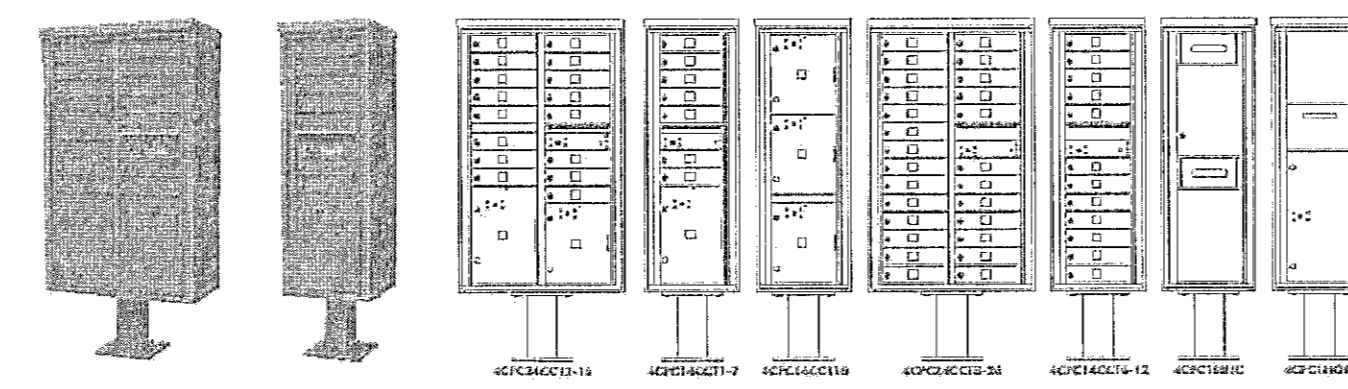
\* COLOR TO BE SELECTED BY OWNER



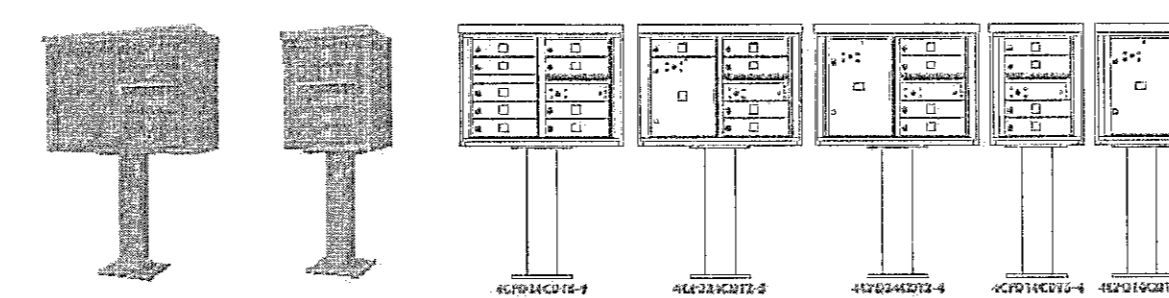
**4CPA**  
Install Height: 67"  
Installed Depth: 17-3/4"  
Single Width: 18-3/4"  
Double Width: 32-13/16"



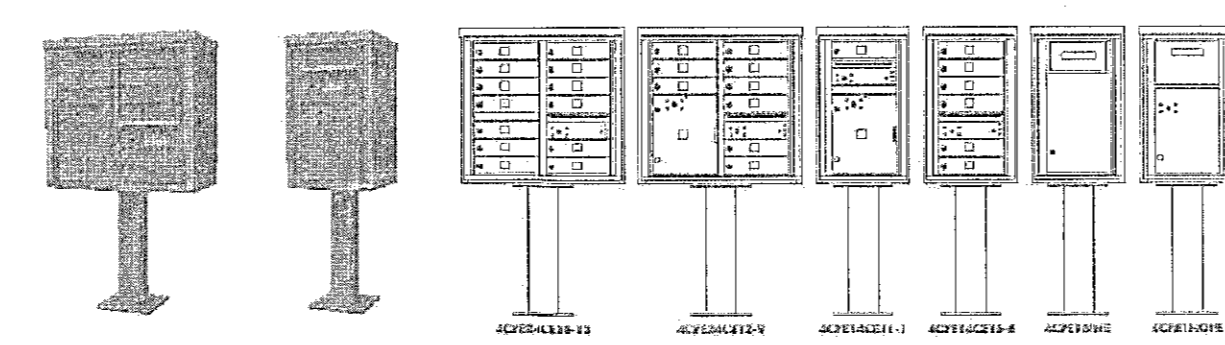
**4CPB**  
Install Height: 46-1/4"  
Installed Depth: 17-3/4"  
Single Width: 18-3/4"  
Double Width: 32-13/16"



**4CPC**  
Install Height: 66-1/2"  
Installed Depth: 17-3/4"  
Single Width: 18-3/4"  
Double Width: 32-13/16"



**4CPD**  
Install Height: 49-13/16"  
Installed Depth: 17-3/4"  
Single Width: 18-3/4"  
Double Width: 32-13/16"

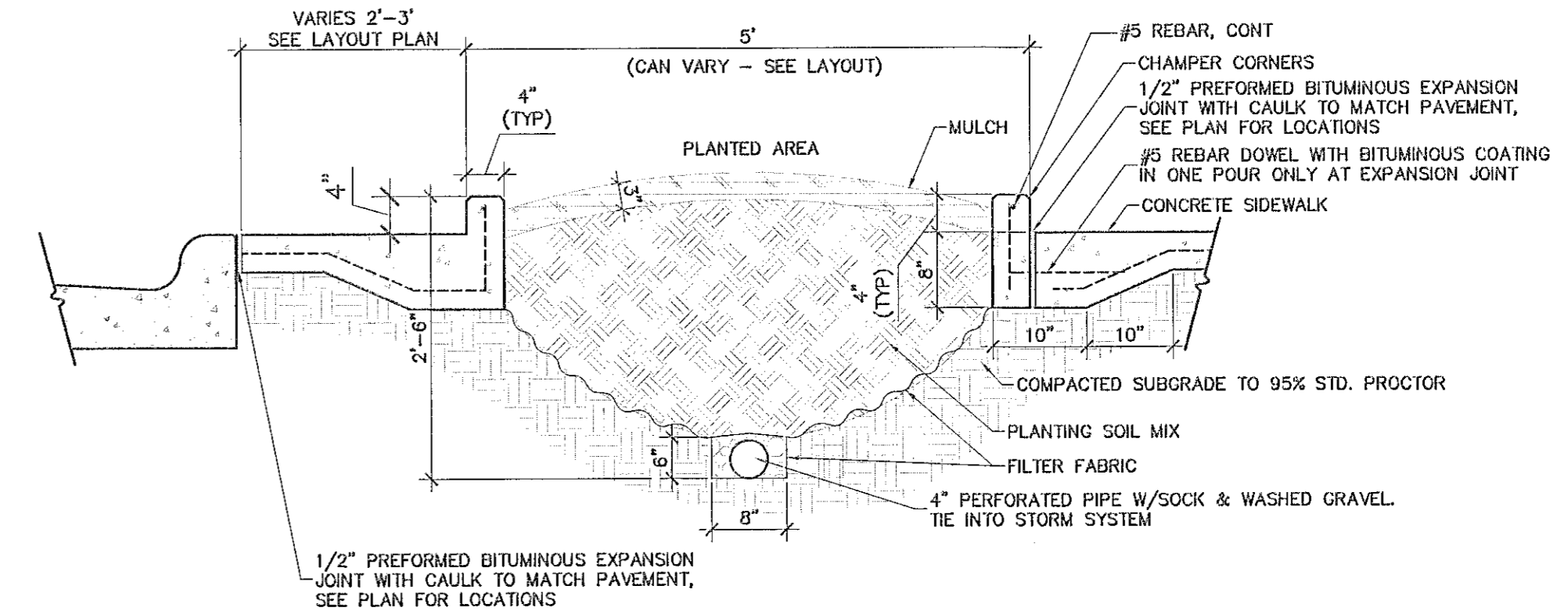


**4CPE**  
Install Height: 56-13/16"  
Installed Depth: 17-3/4"  
Single Width: 18-3/4"  
Double Width: 32-13/16"

NOTE: SECURE TO CONCRETE BASE PER MANUFACTURERS RECOMMENDATIONS - COLOR TO MATCH PROJECT'S COLOR PALETTE.

**MAIL KIOSK 05**

Not to Scale



14-SP-046-A  
HTE#: 16-0043  
APPROVED BY THE TOWN OF CARY DEVELOPMENT REVIEW COMMITTEE

Planner: *K.H.* Date: *24 Sep 2015*

**CURBED PLANTER 01**

Scale: 3/4" = 1'-0"