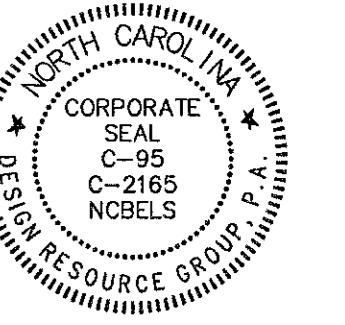


design resource group

- landscape architecture
- civil engineering
- urban design
- land planning
- traffic engineering
- transportation planning

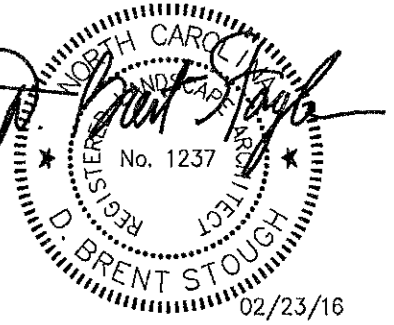
2459 wilkinson boulevard, suite 200
 charlotte, nc 28208
 p 704.343.0608 f 704.358.3093
 www.drg.com



ALSTON VILLAGE APARTMENTS
 CARY, NORTH CAROLINA

WOODFIELD INVESTMENTS, LLC
 11425 HORSEMAN'S TRAIL
 RALEIGH, NC 27613
 (919) 439-1040

CONSTRUCTION DOCUMENTS



SCALE: NTS

PROJECT #: 217-028
 DRAWN BY: MB
 CHECKED BY: BC

SITE DETAILS

FEBRUARY 23, 2016

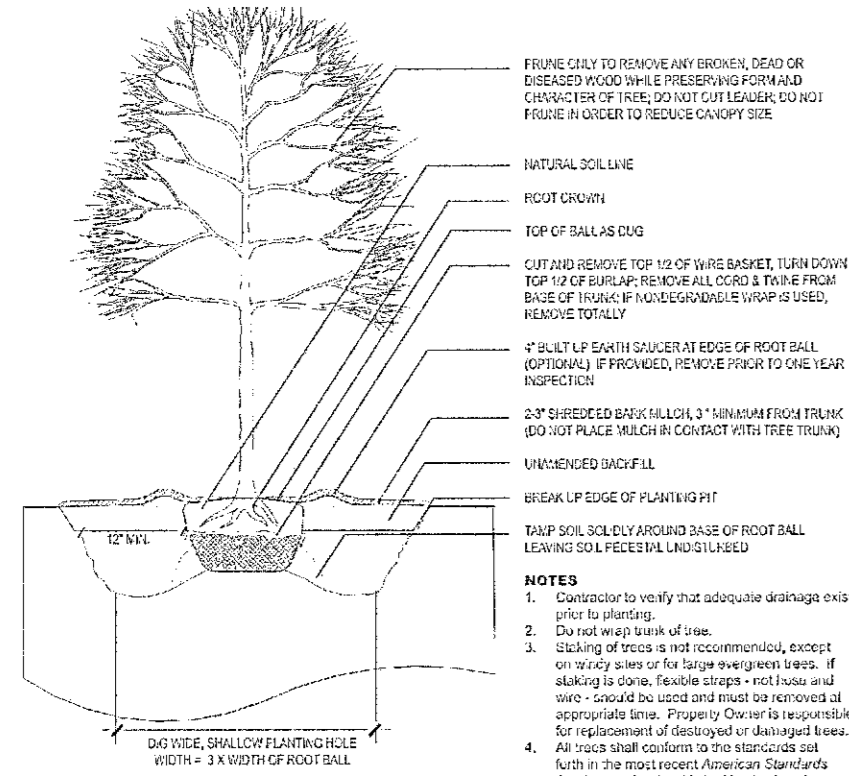
REVISIONS:

15-SP-013
 HTE #: 15-0993
 Approved by the Town of Cary
 Development Review Committee

Planner: *K. Hight* Date: 1 Apr 2016

L8.02

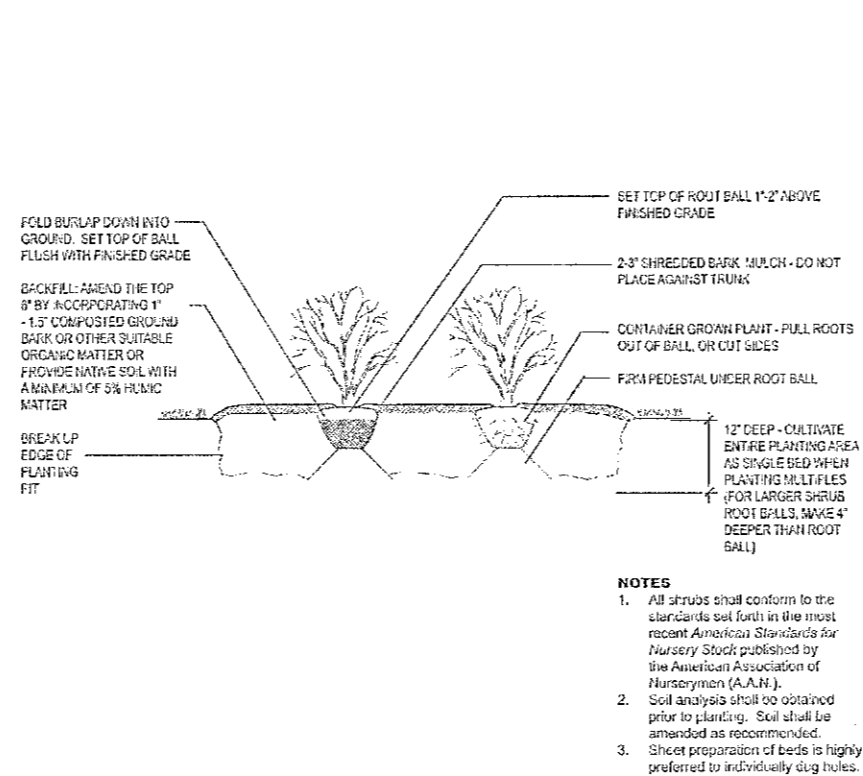
PLANTING DETAILS
Tree Planting



REF. SEC.:
 REVISED:
 DETAIL NO.: **LA-24**
LANDSCAPE
 TOWN OF CARY COMMUNITY APPEARANCE MANUAL
 LAM-27

1

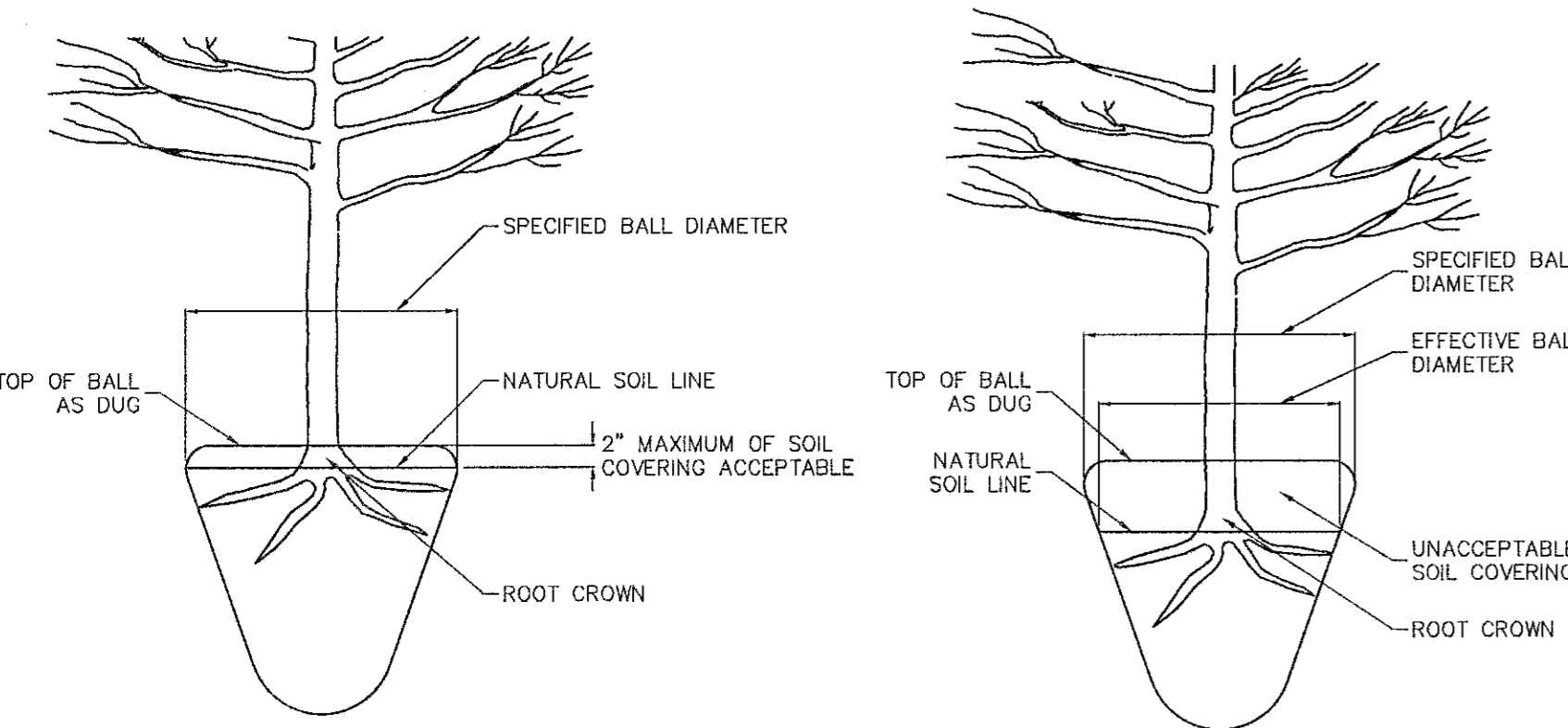
PLANTING DETAILS
Shrub, Groundcover, and Perennial Planting



REF. SEC.:
 REVISED:
 DETAIL NO.: **LA-25**
LANDSCAPE
 TOWN OF CARY COMMUNITY APPEARANCE MANUAL
 LAM-28

2

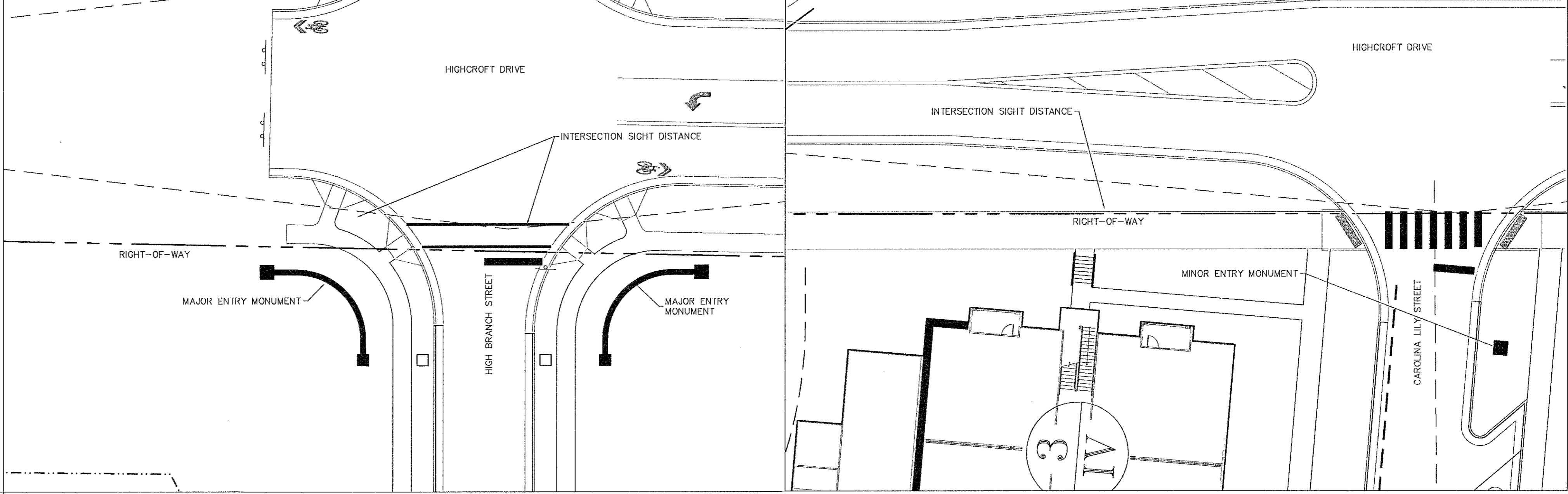
3



NOTE:
 A ROOT FLARE EXCAVATION FOR ALL TREES SPECIFIED WILL BE DONE BY THE CITY TO ENSURE THAT TREES WERE NOT PLANTED/GROWN TOO DEEPLY AT SOURCE (NURSERY). LANDSCAPE CONTRACTOR SHALL HAVE SUPPLIER MARK GROUND LEVEL LINE ABOVE ROOT BALL. IF CITY DETERMINES THAT THERE IS EXCESSIVE SOIL OVER THE ROOT CROWN, THESE TREES WILL BE REJECTED.

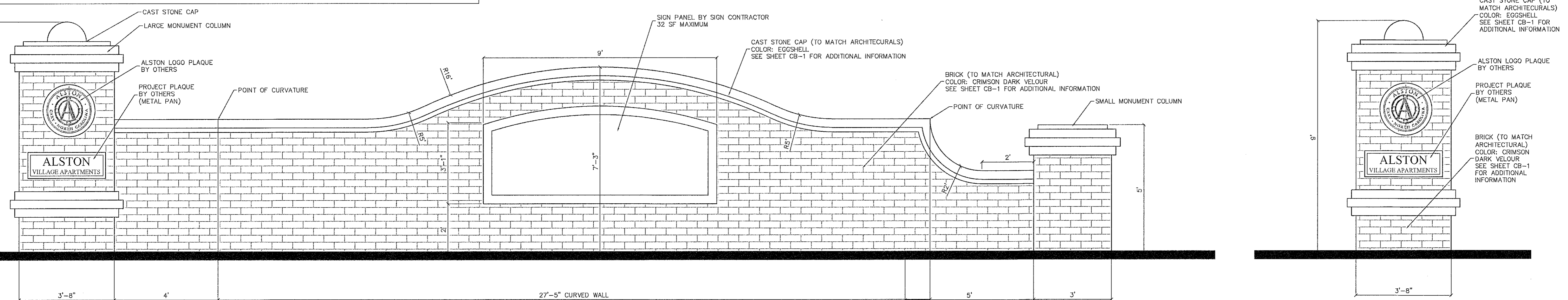
ROOT FLARE DEPTHS
(TREE ROOT BALL CONDITION ON TREES FROM SUPPLIERS)

4



MAJOR ENTRY MONUMENT PLAN VIEW

MINOR ENTRY MONUMENT PLAN VIEW



MAJOR ENTRY MONUMENT ELEVATION

MINOR ENTRY MONUMENT ELEVATION

ENTRY MONUMENT ELEVATIONS

5