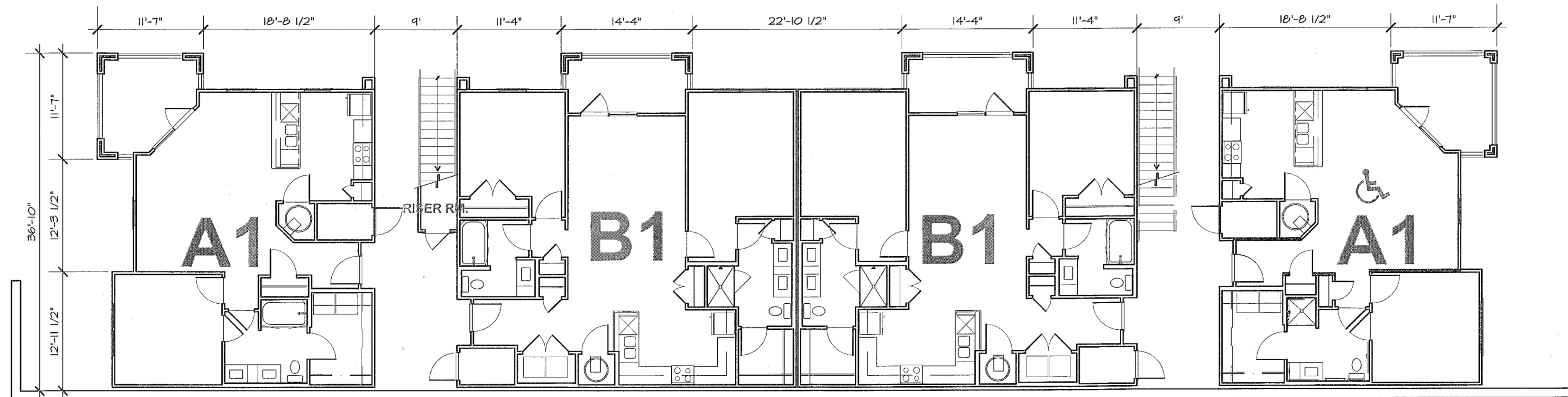


2 BUILDING TYPE I - ENTRANCE LEVEL FLOOR PLAN  
A4.1

1/8"=1'-0"



1 BUILDING TYPE I - TERRACE LEVEL FLOOR PLAN (WHERE APPLICABLE SEE SITE PLAN)  
A4.1

1/8"=1'-0"



**WLA**  
WATTS LEAF ARCHITECTS, PA  
101 North McDowell Street Suite 112  
Charlotte, North Carolina 28204  
PH 704 376 1200 FX 704 376 5111



**Alston Town Center**  
Cary, North Carolina  
a multifamily community for  
**Woodfield Investments, LLC**

22 OCT.2015  
13 AUG.2015  
11 JUNE2015

PROJECT	1506
DATE	28 MAY15
DRAWN BY	AMP
CHECKED BY	CMW

BUILDING PLANS  
GARDEN BUILDING  
TYPE I

**A4.1**

15-SP-013  
HTE#: 15-0993  
Approved by the Town of Cary  
Development Review Committee  
Planner: *Killed* Date: *Apr 2016*