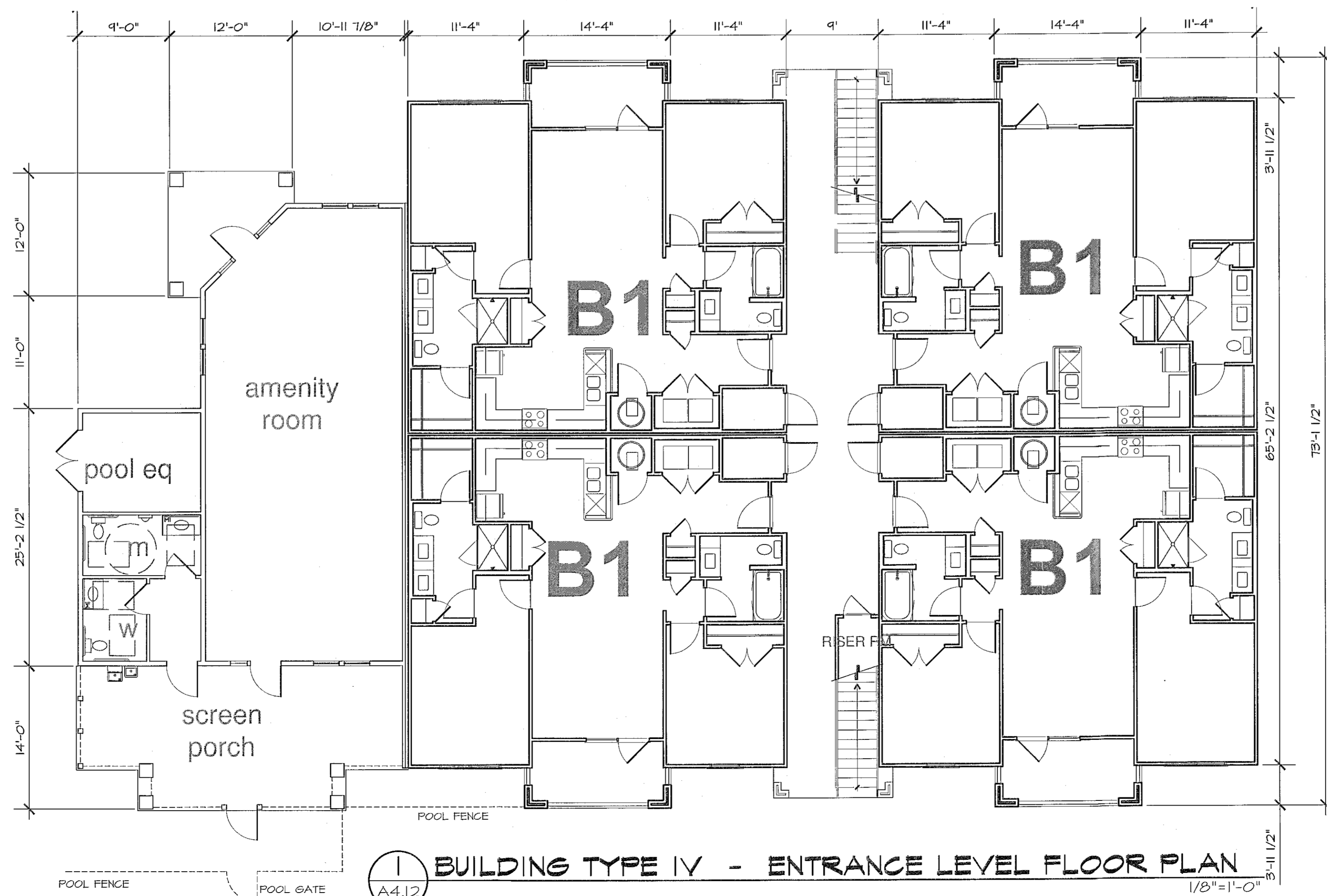
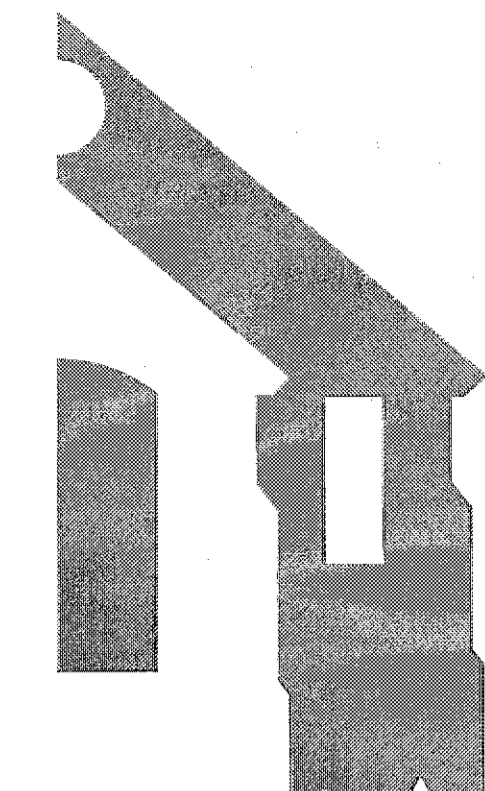


2 BUILDING TYPE IV - MID LEVEL FLOOR PLAN
A4.12 1/8"=1'-0"



1 BUILDING TYPE IV - ENTRANCE LEVEL FLOOR PLAN
A4.12 1/8"=1'-0"



WLA
WATTS LEAF ARCHITECTS, PA
101 North McDowell Street, Suite 112
Charlotte, North Carolina 28204
PH 704 376 1200 FX 704 376 5111



Alston Town Center
Cary, North Carolina
a multifamily community for
Woodfield Investments, LLC

13 AUG.2015
11 JUNE2015

PROJECT	1506
DATE	28 MAY15
DRAWN BY	AMP
CHECKED BY	CMW

BUILDING PLANS
GARDEN BUILDING
TYPE IV

A4.12

15-SP-013
HTE#: 15-0993
Approved by the Town of Cary
Development Review Committee

Planner: Kate Date: 1 Apr 2016