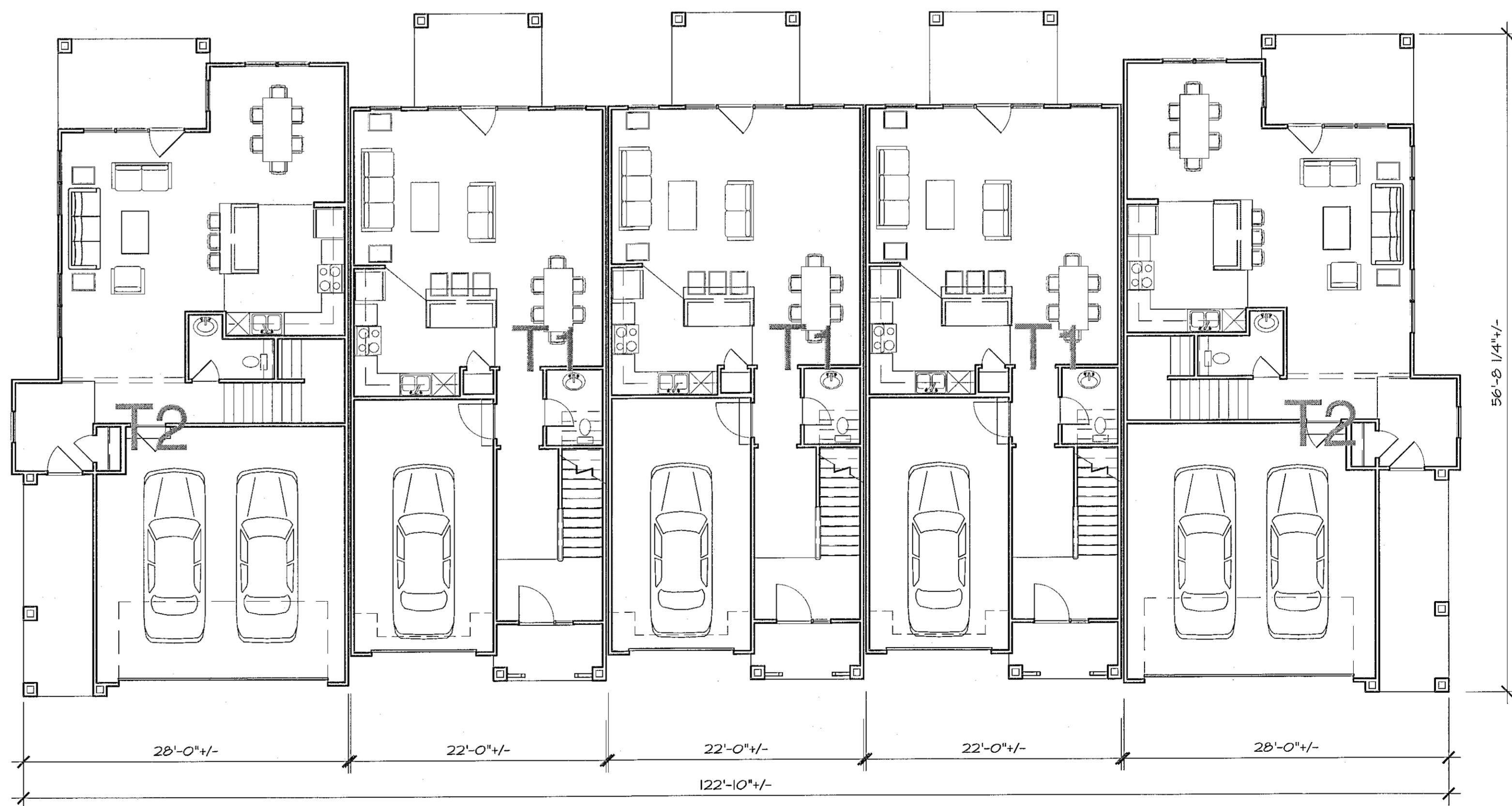


2 3-UNIT TOWNHOME 1ST FLOOR PLAN

A4.18

1/8"=1'-0"



1 5-UNIT TOWNHOME 1ST FLOOR PLAN (T2 ENDS)

A4.18

1/8"=1'-0"



**WLA**  
 WATTS LEAF ARCHITECTS, PA  
 101 North McDowell Street Suite 112  
 Charlotte, North Carolina 28204  
 PH 704 376 1200 FX 704 376 5111



**Alston Town Center**  
 Cary, North Carolina  
 a multifamily community for  
**Woodfield Investments, LLC**

22 OCT.2015  
 13 AUG.2015  
 11 JUNE2015

PROJECT 1506  
 DATE 28 MAY15  
 DRAWN BY AMP  
 CHECKED BY CMW

BUILDING PLANS  
 TOWNHOMES  
 3 & 5 UNIT BLDGS.

**A4.18**

15-SP-013  
 HTE#: 15-0993  
 Approved by the Town of Cary  
 Development Review Committee

Planner: *K.H.* Date: 1 Apr 2016