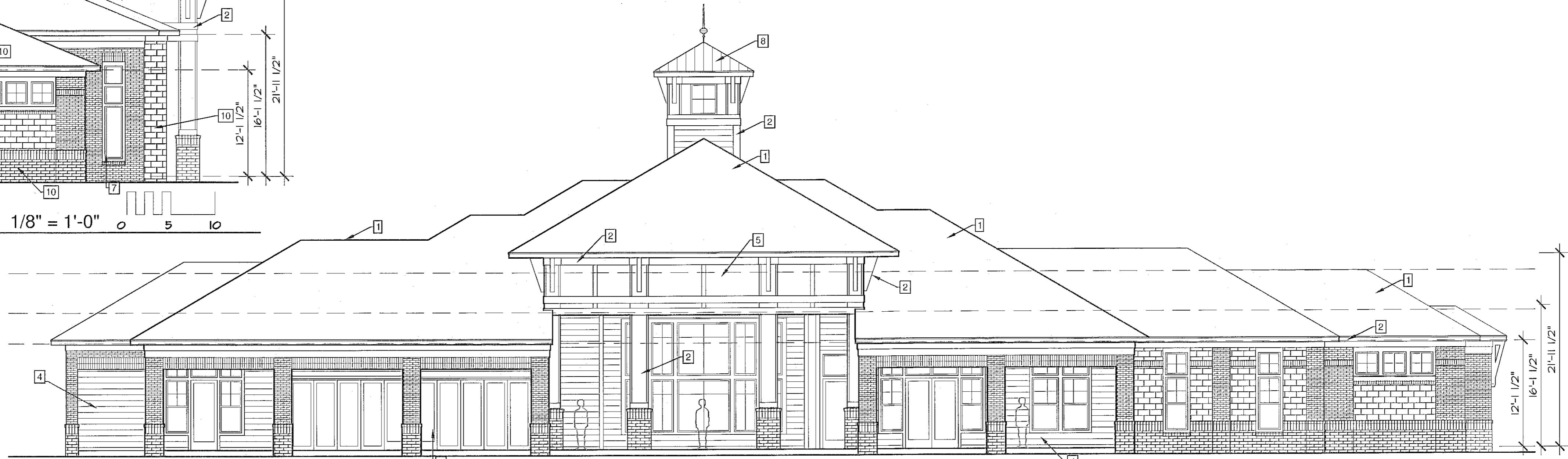
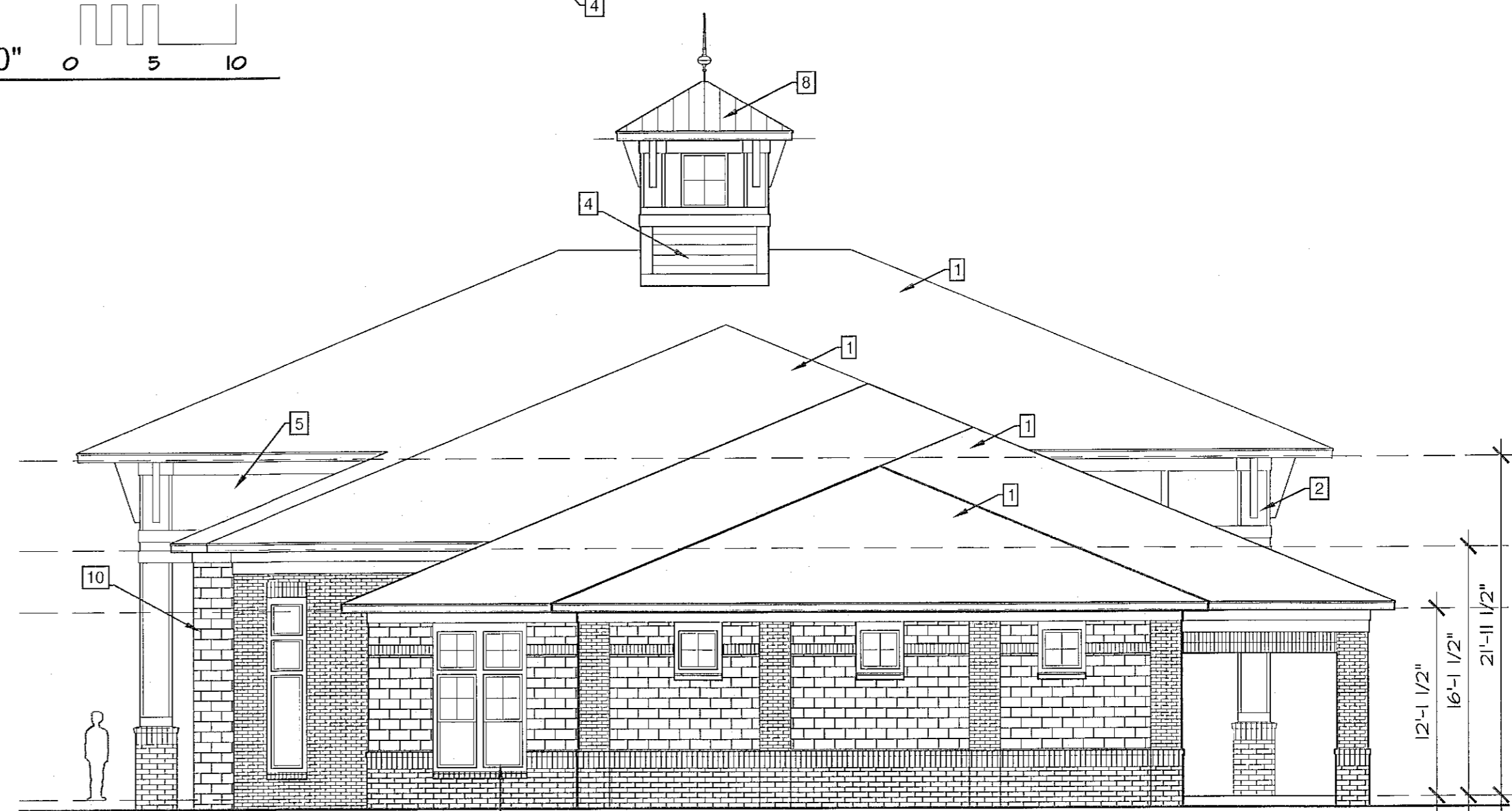


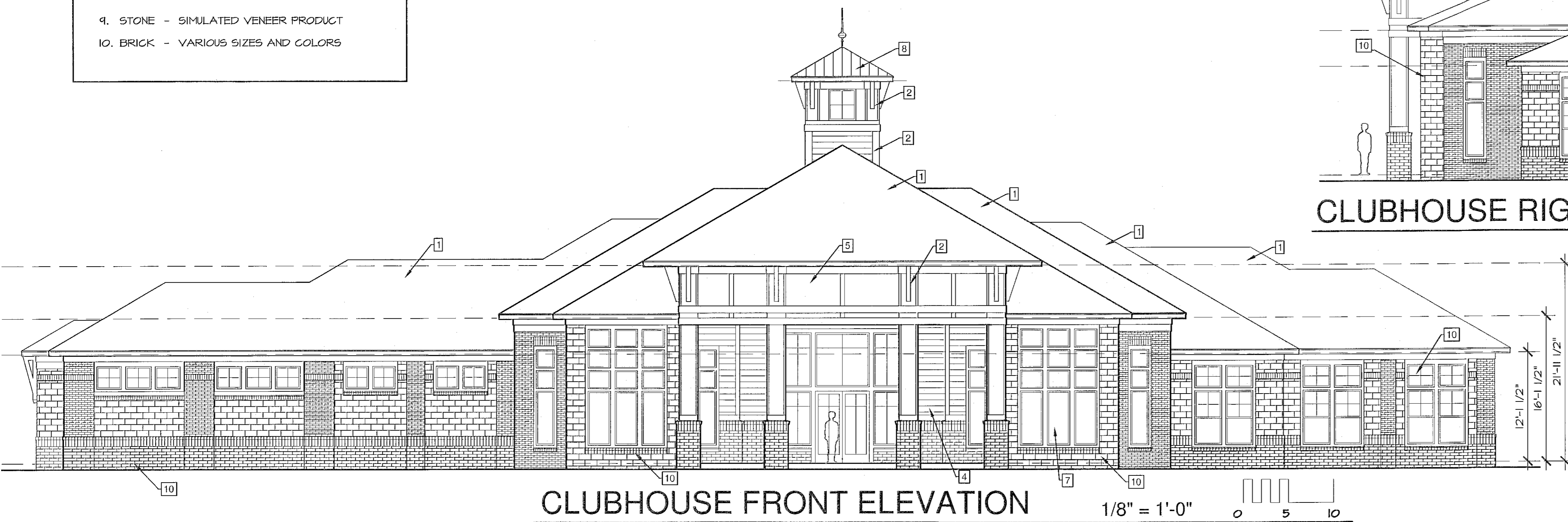
CLUBHOUSE LEFT SIDE ELEVATION 1/8" = 1'-0"



CLUBHOUSE REAR ELEVATION 1/8" = 1'-0"



CLUBHOUSE RIGHT SIDE ELEVATION 1/8" = 1'-0"

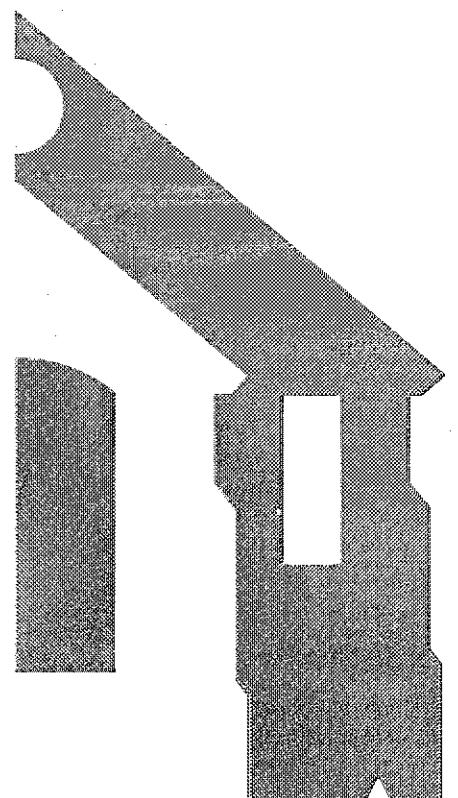


CLUBHOUSE FRONT ELEVATION 1/8" = 1'-0"

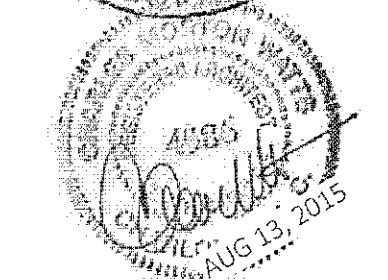
- ELEVATION MATERIALS**
1. ROOFING - 30 YEAR ASPHALT SHINGLES
WEATHERED WOOD
 2. FASCIA, BRACKETS, CORNER TRIM, GENERAL TRIM - WOOD
PAINTED WHITE
 3. GUTTERS AND DOWNSPOUTS - ALUMINUM
 4. HORIZONTAL SIDING - CEMENTITIOUS WITH VARYING EXPOSURES
PAINTED SEVERAL COLORS
 5. PANEL SIDING - CEMENTITIOUS PANEL WITH APPLIED TRIM
PAINTED SEVERAL COLORS
 6. BALCONY RAILINGS - ALUMINUM
 7. WINDOWS - VINYL
WHITE
 8. ACCENT ROOFS - STANDING SEAM METAL
 9. STONE - SIMULATED VENEER PRODUCT
 10. BRICK - VARIOUS SIZES AND COLORS

1. All building permits to be consistent with the approved site plan. The Planning Department does not review building permit plan sets, so it is the developer's responsibility to ensure that elevations submitted in the building permit set match those approved during the site plan review process. If the elevations do not match those in the site plan, it will delay the issuance of a Certificate of Occupancy and the end of construction.
2. All vent pipes, etc. extending above the roof surface must be painted a color that blends with the roof color.

15-SP-013
HTE#: 15-0993
Approved by the Town of Cary
Development Review Committee
Planner: *K.H.H.* Date: *1 Apr 2016*



WLA
WATTS LEAF ARCHITECTS, PA
101 North McDowell Street, Suite 112
Charlotte, North Carolina 28204
PH 704 376 1200 FX 704 376 5111



Alston Town Center
Cary, North Carolina
a multifamily community for
Woodfield Investments, LLC

13 AUG.2015
11 JUNE2015

PROJECT	1506
DATE	28 MAY15
DRAWN BY	SAB
CHECKED BY	CMW

EXT. ELEVATIONS CLUB

CL1.2