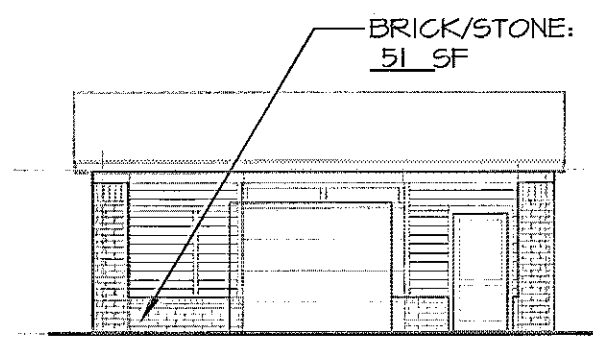


TOTAL FAÇADE AREA: 231 SF
 AREA OF WINDOWS AND DOORS: 26 SF
 TOTAL WALL AREA FOR MATERIAL CALCULATIONS: 145 SF
 REQUIRED BRICK/STONE/CAST CONC.: N/A SF

COMMERCIAL AND MIXED-USES (TOTAL WALL AREA X .75): N/A SF
 ATTACHED RESIDENTIAL BLDGS. (145 X .35): 51 SF

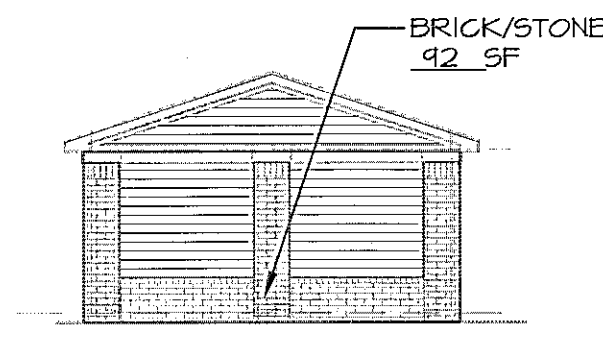


1. MATERIALS OVERLAY

MAINTENANCE BLDG. - FRONT & END ELEVATIONS
 SCALE: 3/32" = 1'-0"

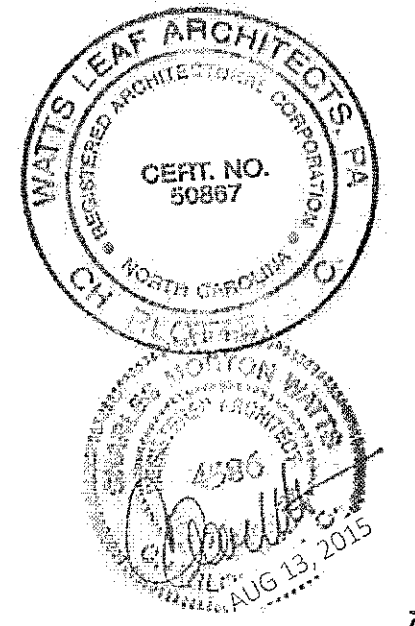
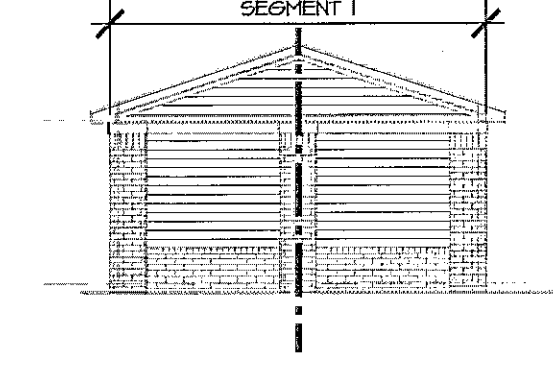
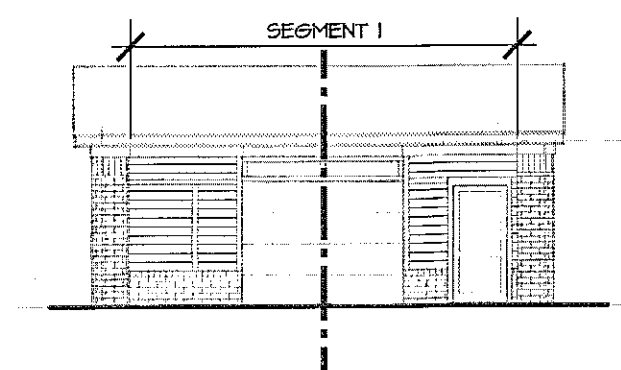
TOTAL FAÇADE AREA: 199 SF
 AREA OF WINDOWS AND DOORS: 0 SF
 TOTAL WALL AREA FOR MATERIAL CALCULATIONS: 199 SF
 REQUIRED BRICK/STONE/CAST CONC.: N/A SF

COMMERCIAL AND MIXED-USES (TOTAL WALL AREA X .75): N/A SF
 ATTACHED RESIDENTIAL BLDGS. (199 X .35): 70 SF

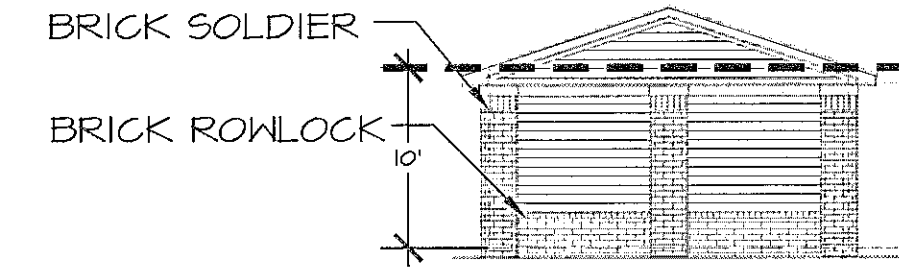
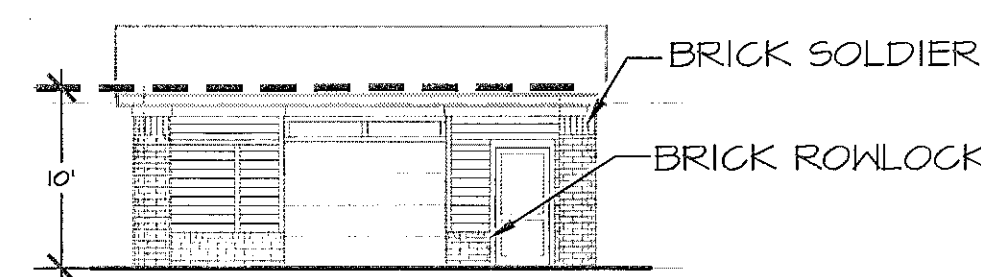


2. COMPOSITION OVERLAY

MAINTENANCE BLDG. - FRONT & END ELEVATIONS
 SCALE: 3/32" = 1'-0"

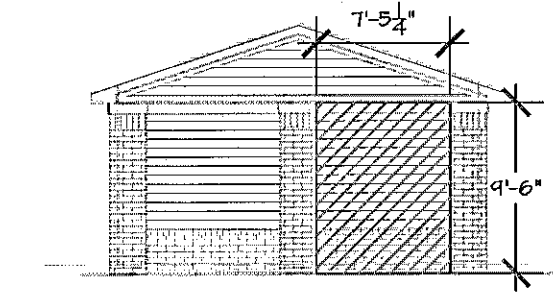
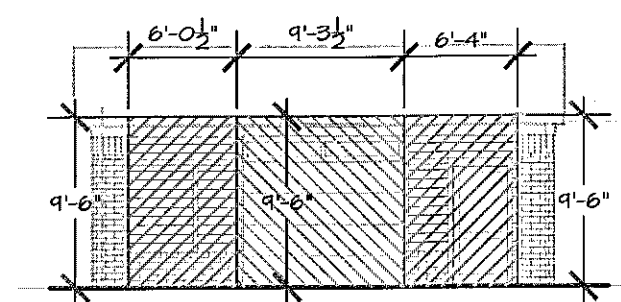


Alston Town Center
 Cary, North Carolina
 a multifamily community for
Woodfield Investments, LLC



3. SCALE OVERLAY

MAINTENANCE BLDG. - FRONT & END ELEVATIONS
 SCALE: 3/32" = 1'-0"

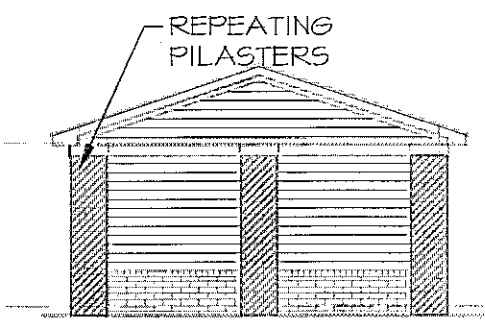
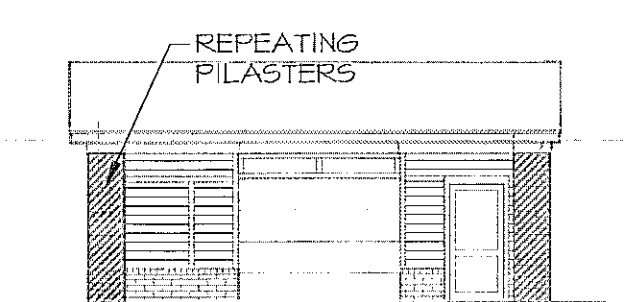


4. PROPORTION OVERLAY

MAINTENANCE BLDG. - FRONT & END ELEVATIONS
 SCALE: 3/32" = 1'-0"

NOTES:

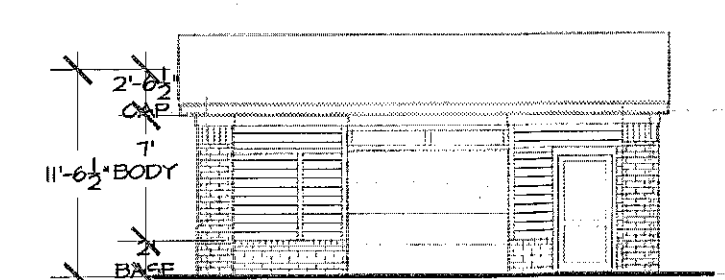
1. TRANSPARENCY OVERLAY (#6) NOT APPLICABLE (NO REQUIREMENT FOR RESIDENTIAL PROJECTS).



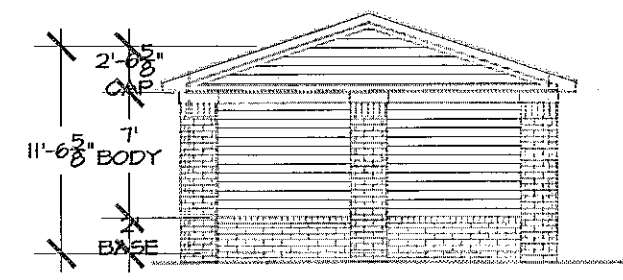
5. RHYTHM OVERLAY

MAINTENANCE BLDG. - FRONT & END ELEVATIONS
 SCALE: 3/32" = 1'-0"

TOTAL BUILDING HEIGHT: 11'-6"
 MIN. HEIGHT OF BODY (50% OF BLDG. HEIGHT): 5'-9"

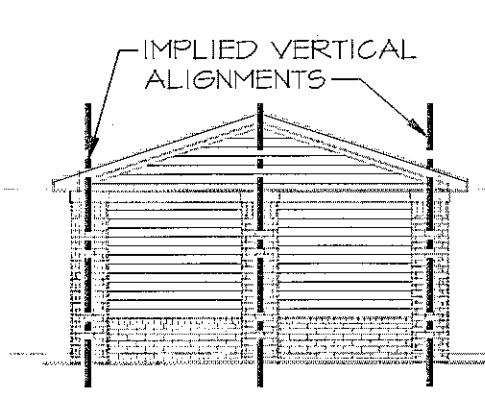
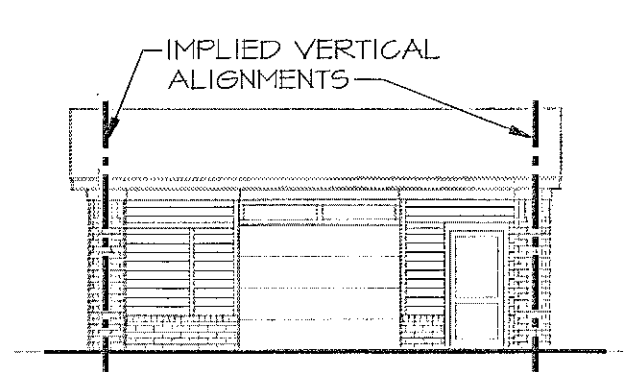


TOTAL BUILDING HEIGHT: 9'-7"
 MIN. HEIGHT OF BODY (50% OF BLDG. HEIGHT): 4'-10"



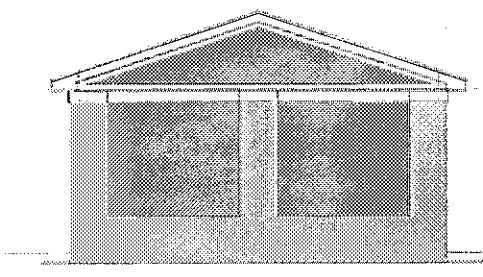
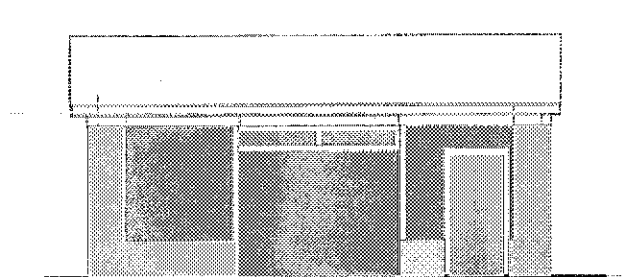
7. ARTICULATION OVERLAY

MAINTENANCE BLDG. - FRONT & END ELEVATIONS
 SCALE: 3/32" = 1'-0"



8. EXPRESSION OVERLAY

MAINTENANCE BLDG. - FRONT & END ELEVATIONS
 SCALE: 3/32" = 1'-0"



- P-1 (BRICK, CRIMSON DARK VELOUR)
- P-2 (PAINT, WHITE DUCK)
- P-3 (NOT USED)
- A-1 (PAINT, ROOKWOOD TERRA COTTA)
- A-2 (PAINT, WHITE)

9. COLOR OVERLAY

MAINTENANCE BLDG. - FRONT & END ELEVATIONS
 SCALE: 3/32" = 1'-0"

NOTE: ACCENT COLOR A-2 NOT SHOWN ON COLOR OVERLAY FOR CLARITY. TRIM AREA NOT SHOWN COLORED IS A-2.

15-SP-013
 HTE#: 15-0993
 Approved by the Town of Cary
 Development Review Committee
 Planner: *[Signature]* Date: 1 Apr 2016.

13 AUG.2015
 11 JUNE2015

PROJECT	1506
DATE	9 APR15
DRAWN BY	AMP
CHECKED BY	CMW
CARY DESIGN OVERLAYS MAINT. BUILDING	
ASD-36	