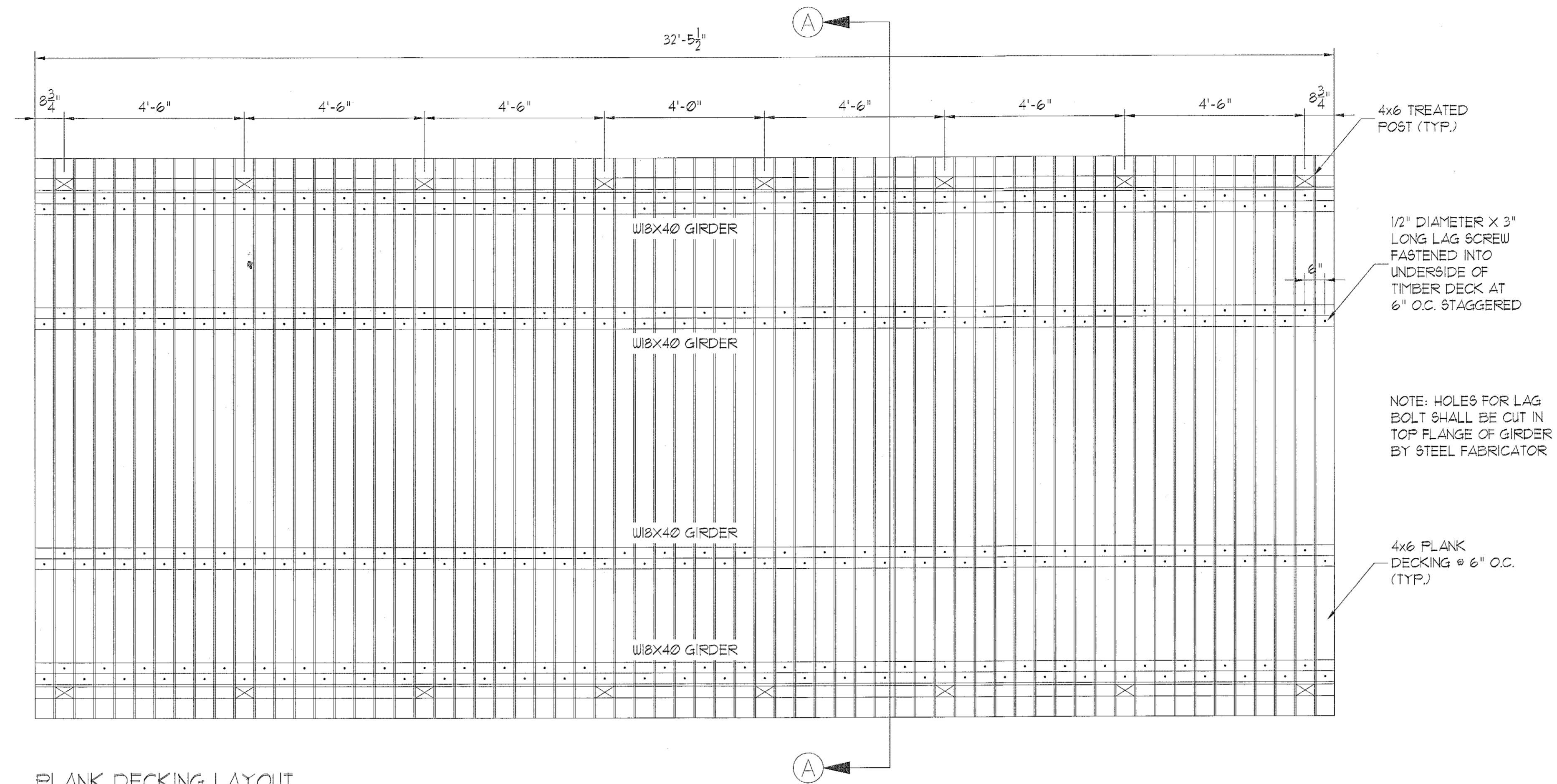
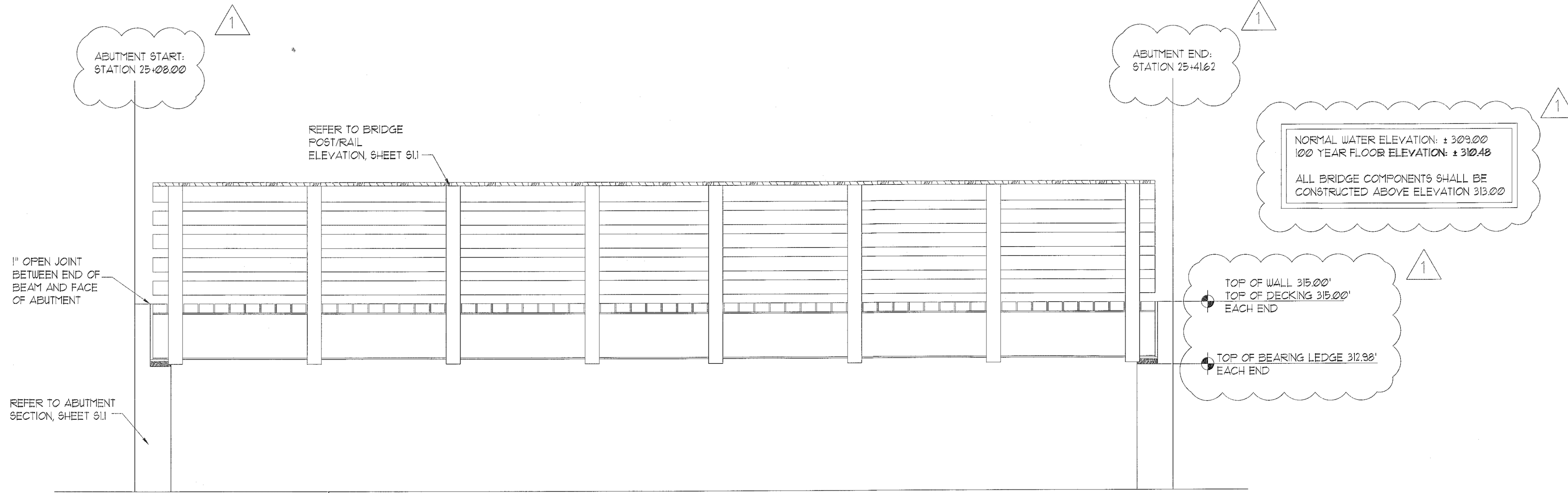


PLAN NOTES:

1. TOP OF CONCRETE WALL AND FOOTING ELEVATIONS ARE INDICATED THUS \blacktriangle ON THE WALL ELEVATIONS.
2. TOP OF FOOTING ELEVATIONS ARE SHOWN THUS (...) ON PLAN. TOP OF FOOTINGS SHALL BE 1'-6" MINIMUM BELOW FINISH GRADES.
3. ALL DIMENSIONS DEPICTED ON PLAN ARE BASED SPECIFICALLY ON THE SITE GRADING PLAN FURNISHED TO THIS OFFICE BY THE JOHN R. McADAMS COMPANY, INC. THE CONTRACTOR SHALL COORDINATE ALL DIMENSIONS PRIOR TO ACTUAL WALL CONSTRUCTION AND VERIFY THE WALL DESIGN INDICATED IS IN COMPLIANCE WITH THE ABUTMENT AND WING WALL SECTIONS BASED ON THE WALL HEIGHT AND SITE GRADING PROFILE VERIFIED IN THE FIELD. ANY VARIATION FROM THE SPECIFIC LAYOUT AND CONFIGURATIONS SHOWN ON THESE DRAWINGS SHALL BE BROUGHT TO THE ATTENTION OF THE STRUCTURAL ENGINEER PRIOR TO CONSTRUCTION TO ENSURE THE NECESSARY STRUCTURAL DESIGN INTENT IS CAPABLE OF BEING ACHIEVED.
4. SEE GENERAL NOTES AND TYPICAL DETAILS ON SHEET CS
5. BRIDGE ABUTMENT AND FOOTING ELEMENTS SHALL BE CONSTRUCTED WITH A MINIMUM CLEARANCE OF 5'-0" FROM THE TOP OF BANK, IN ACCORDANCE WITH TOWN OF CARY REQUIREMENTS.



PLANK DECKING LAYOUT
 SCALE: 1/2"=1'



SIDE ELEVATION
 SCALE: 1/2"=1'

15-SP-013
 HTE#: 15-0993
 APPROVED BY THE TOWN OF CARY
 DEVELOPMENT REVIEW COMMITTEE

Planner: *W.H.H.* Date: 1 Apr 2016

CLIENT
 Woodfield Investments
 11425 Horseman's Trail
 Raleigh, NC 27613

PROJECT
 Aston Village Greenway Bridge Design
 BRIDGE LAYOUT AND ELEVATION

NORTH CAROLINA
 PROFESSIONAL
 SEAL
 03710
 W.H.H.
 P.L.L.C.
 STRUCTURAL MEMBERS ONLY

DRAWING
 DATE: 01/08/2016
 SCALE: VARIES
 PROJECT #: 1551-02
 DRAWN BY: W.H.H.
 CHECKED BY: DDP

REVISION Δ 2.22.16