

**CHAS. H. SELLS, INC.**  
 Civil Engineering, Surveying and Planning  
 15401 Watson Parkway  
 Suite 100  
 Cary, NC 27513  
 Tel: 919-478-0035  
 Fax: 919-478-0036  
 www.chasells.com



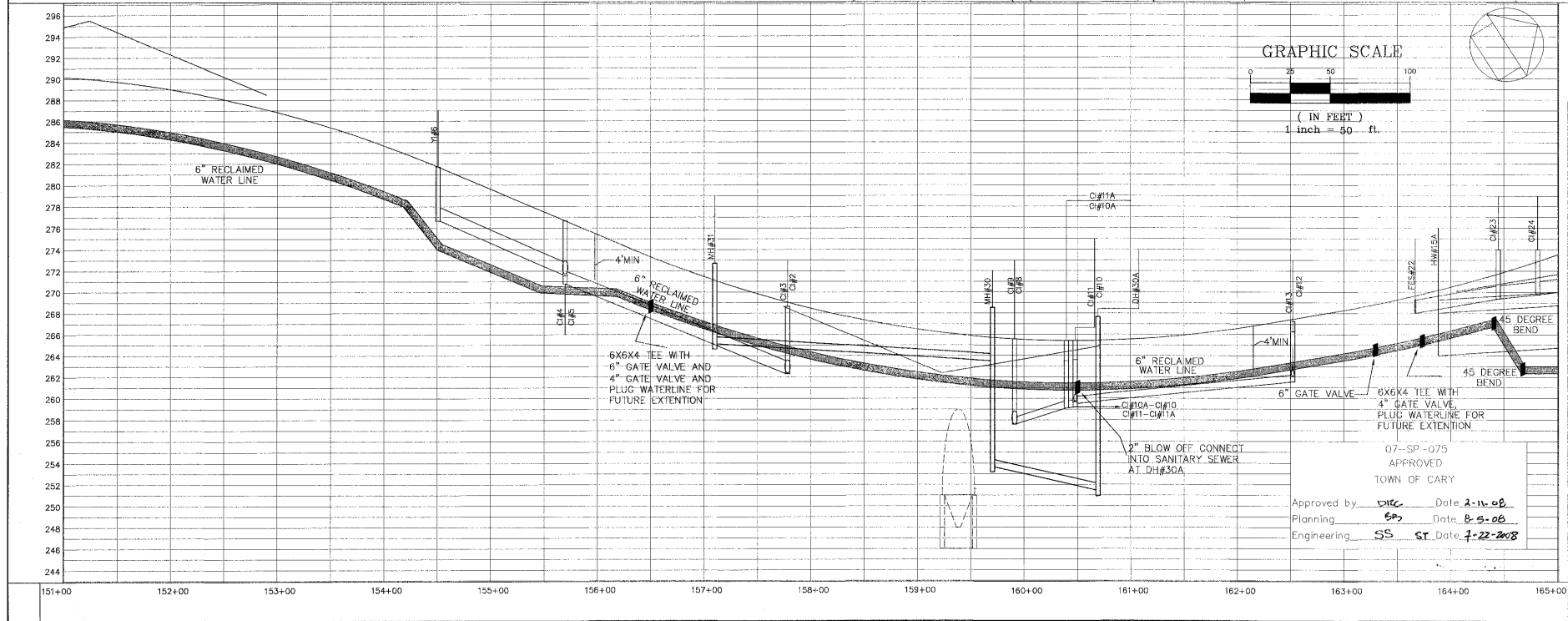
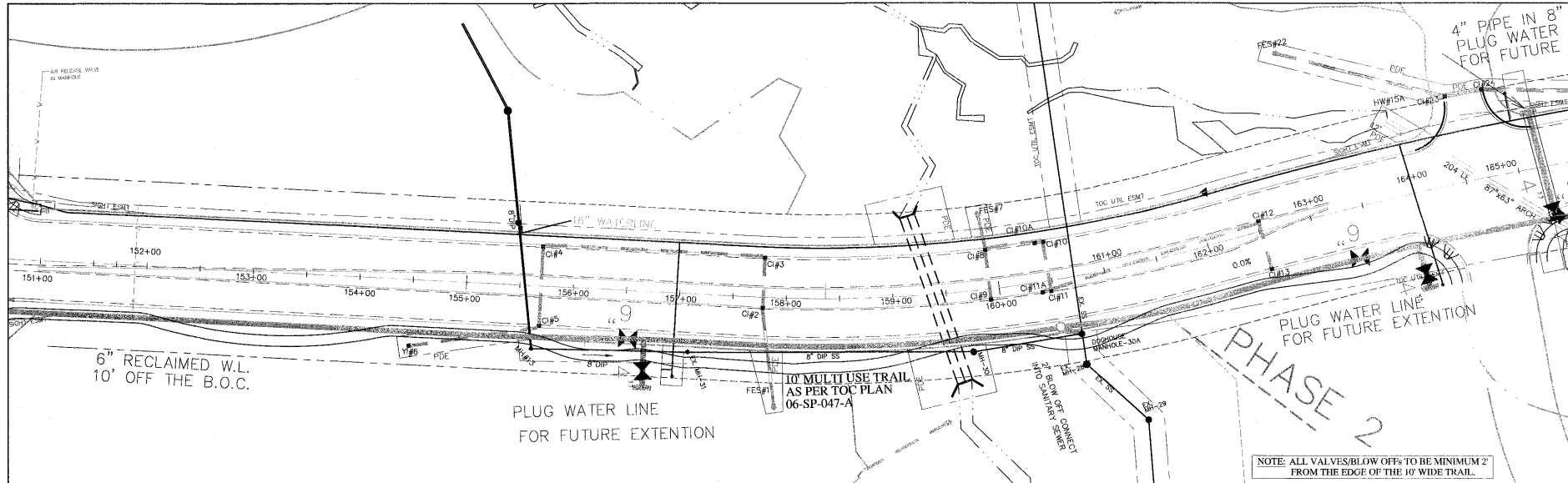
RELEASED FOR CONSTRUCTION

**Amberly Reclaimed Water Line Phase 2**  
 Cary, NC

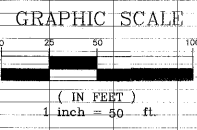
REVISIONS

NO.	DESCRIPTION	DATE

PROJECT # 07-4019 DATE 06/25/08  
 DRAWN BY: MB CHECKED BY: DS  
 TITLE  
 YATES STORE ROAD PLAN AND PROFILE  
 SHEET  
**C3.2**



NOTE: ALL VALVES/BLOW OFFS TO BE MINIMUM 2' FROM THE EDGE OF THE 10' WIDE TRAIL.



07-SP-075  
 APPROVED  
 TOWN OF CARY  
 Approved by *DSC* Date *2-11-08*  
 Planning *SP* Date *8-5-08*  
 Engineering *SS* Date *7-22-2008*