

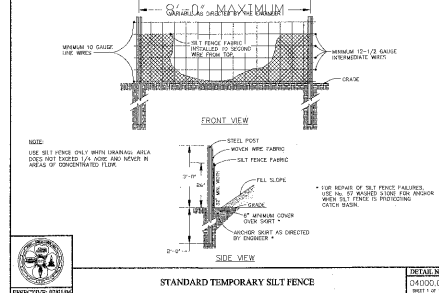
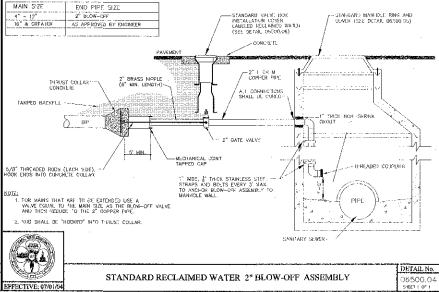
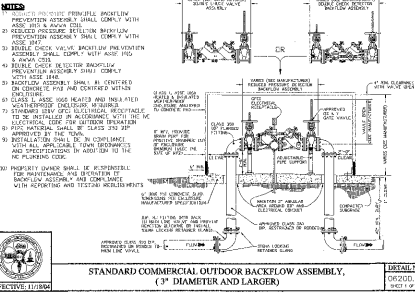
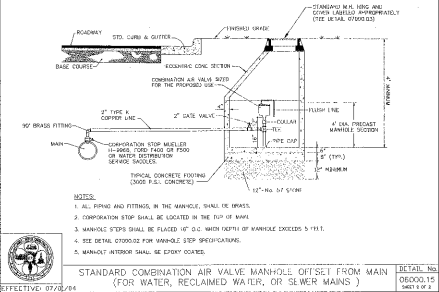
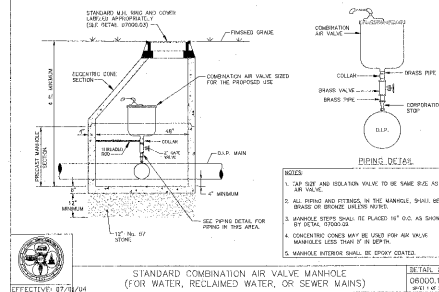
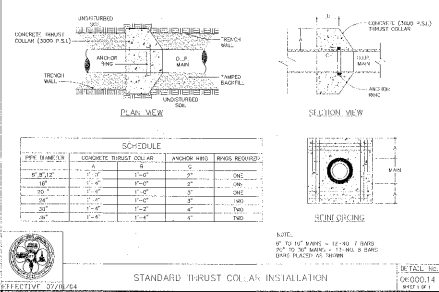
STANDARD REACTION BLOCKING

MINIMUM CONCRETE BLOCKING (C.Y.)

PIPE DIA.	BLIND DIA.	BLIND	BLIND	BLIND	BLIND
4"	1/2"	1/2"	1/2"	1/2"	1/2"
6"	1/2"	1/2"	1/2"	1/2"	1/2"
8"	1/2"	1/2"	1/2"	1/2"	1/2"
10"	3/4"	3/4"	1/2"	1/2"	1/2"
12"	3/4"	3/4"	3/4"	1/2"	1/2"
14"	1"	1-1/2"	3/4"	1/2"	1/2"
16"	1-1/2"	3/4"	1"	1/2"	1/2"
18"	1-1/2"	2-1/2"	1-1/2"	3/4"	1/2"
20"	2"	3"	1-1/2"	3/4"	1/2"
24"	2-1/2"	4-1/2"	2-1/2"	1-1/2"	3/4"

* CONCRETE SHALL BE 3000 P.S.I. MIN.

DETAIL NO. 06000.13
EFFECTIVE: 07/28/04



CHAS. H. SELLS, INC.
Civil Engineering, Surveying and Planning
15401 Weston Parkway
Suite 100
Cary, NC 27513
Tel: 919-678-0035
Fax: 919-678-0206
www.chasells.com



AMBERLY RECLAIMED WATER LINE PHASE 2
Cary, NC
GS Carolina
4011 Westchase Blvd, Suite 175
Raleigh, NC 27607

REVISIONS

NO.	DATE	DESCRIPTION

PROJECT #: 07-4019 DATE: 06/25/08
DRAWN BY: MB CHECKED BY: DS
TITLE
WATERLINE DETAILS
SHEET
C9.1

07-SP-075
APPROVED
TOWN OF CARY

Approved by: *DRC* Date: 2-11-08
Planning: *MB* Date: 8-5-08
Engineering: *SS* Date: 7-22-2008