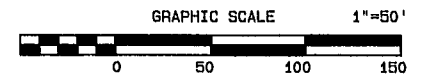
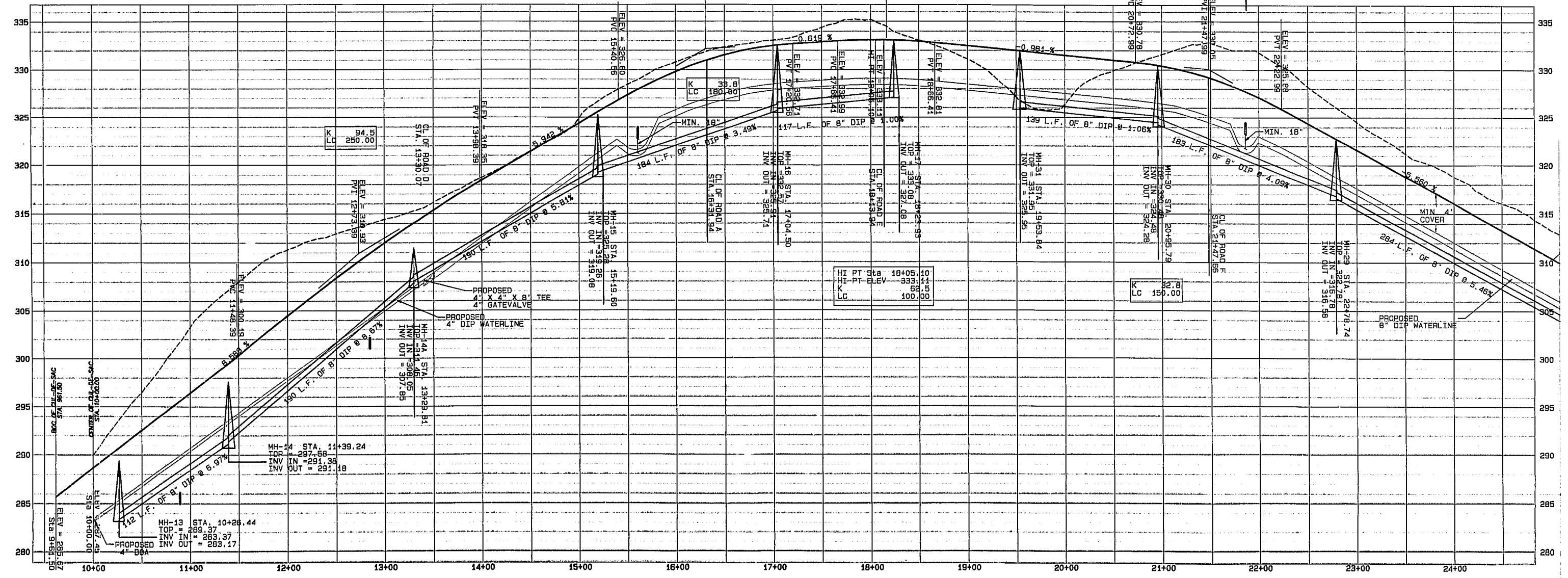


1. ALL MANHOLE TOPS THAT ARE BELOW THE 100 YEAR FLOOD PLAN ELEVATION OF 269.43 SHALL BE EQUIPPED WITH WATERTIGHT FRAMES AND COVERS AND SHALL BE VENTED IN COORDANCE WITH STANDARD DETAIL 7.15
2. MANHOLES LOCATED WITHIN THE 100 YEAR FLOOD PLAIN OR IN AREAS OF HIGH GROUND WATER SHALL BE WATERPROOF BY WRAPPING ALL JOINTS WITH 8" WIDTH BAND OF INORGANIC ASBESTOS FELT SATURATED IN WATERPROOF ASPHALT.
3. 4" MIN COVER FROM TOP OF PAVEMENT TO TOP OF WATERLINE PIPE.
4. MIN 18" COVER BETWEEN DRAINAGE PIPE AND WATERLINE PIPE.



NORTH CAROLINA
PROFESSIONAL
SEAL
0070
SINCE 1988
BY
9-24-99



HI	PT	STA	18+05.10
HI	PT	ELEV	333.11
K			52.50
LC			100.00

K			32.8
LC			150.00