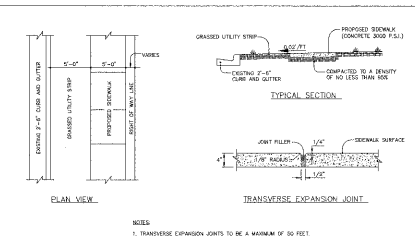


NOTES:

- CONCRETE SHALL BE 3000 P.S.I.
- CONCRETE SHALL BE FINISHED WITH A BRUSHED SURFACE.
- EXPANSION JOINTS SHALL BE LOCATED AT THE INTERSECTIONS OF DRIVEWAYS AND STREET INTERSECTIONS.

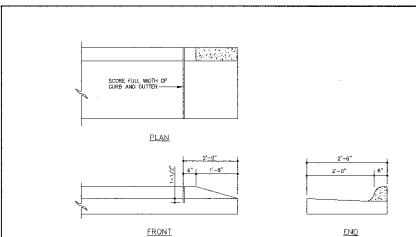
STANDARD CONCRETE CURB AND GUTTER
DETAIL NO. 03000.02
SHEET 1 OF 1



NOTES:

- TRANSVERSE EXPANSION JOINTS TO BE A MAXIMUM OF 30 FEET.
- ALL CONCRETE TO BE FINISHED WITH CURBED COMPACT.
- CONCRETE SHALL BE 3000 P.S.I.

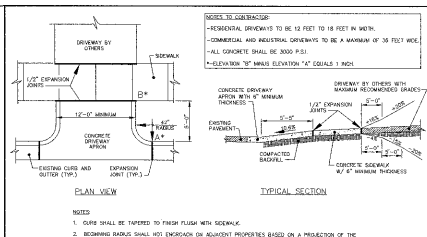
STANDARD CONCRETE SIDEWALK
DETAIL NO. 03000.07
SHEET 1 OF 1



NOTES:

- CONCRETE SHALL BE 3000 P.S.I.
- CONCRETE SHALL BE FINISHED WITH A BRUSHED SURFACE.
- EXPANSION JOINTS SHALL BE LOCATED AT THE INTERSECTIONS OF DRIVEWAYS AND STREET INTERSECTIONS.

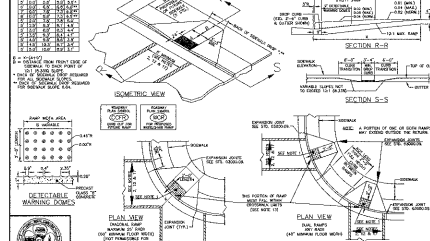
STANDARD METHOD OF ENDING CURB AND GUTTER
DETAIL NO. 03000.11
SHEET 1 OF 1



NOTES:

- CONCRETE SHALL BE 3000 P.S.I.
- CONCRETE SHALL BE FINISHED WITH A BRUSHED SURFACE.
- EXPANSION JOINTS SHALL BE LOCATED AT THE INTERSECTIONS OF DRIVEWAYS AND STREET INTERSECTIONS.

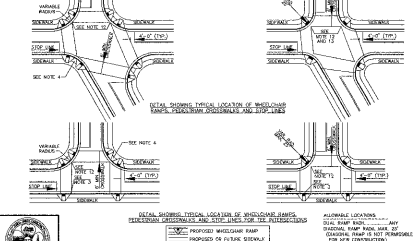
STANDARD DRIVEWAY APRON
DETAIL NO. 03000.13
SHEET 1 OF 1



NOTES:

- RAMP SHALL BE 1:12 SLOPE.
- CONCRETE SHALL BE 3000 P.S.I.
- CONCRETE SHALL BE FINISHED WITH A BRUSHED SURFACE.

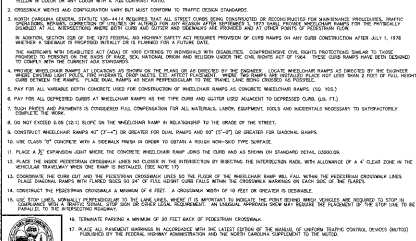
STANDARD WHEELCHAIR RAMP
DETAIL NO. 03000.14
SHEET 1 OF 1



NOTES:

- RAMP SHALL BE 1:12 SLOPE.
- CONCRETE SHALL BE 3000 P.S.I.
- CONCRETE SHALL BE FINISHED WITH A BRUSHED SURFACE.

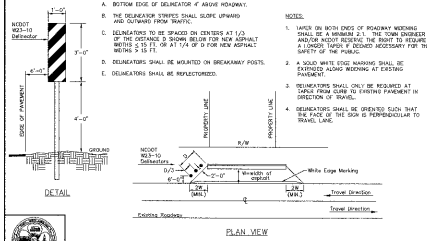
STANDARD WHEELCHAIR RAMP
DETAIL NO. 03000.14
SHEET 1 OF 1



NOTES:

- RAMP SHALL BE 1:12 SLOPE.
- CONCRETE SHALL BE 3000 P.S.I.
- CONCRETE SHALL BE FINISHED WITH A BRUSHED SURFACE.

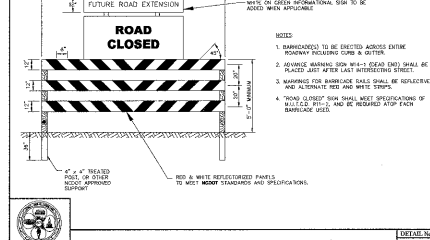
STANDARD WHEELCHAIR RAMP
DETAIL NO. 03000.14
SHEET 1 OF 1



NOTES:

- CONCRETE SHALL BE 3000 P.S.I.
- CONCRETE SHALL BE FINISHED WITH A BRUSHED SURFACE.
- EXPANSION JOINTS SHALL BE LOCATED AT THE INTERSECTIONS OF DRIVEWAYS AND STREET INTERSECTIONS.

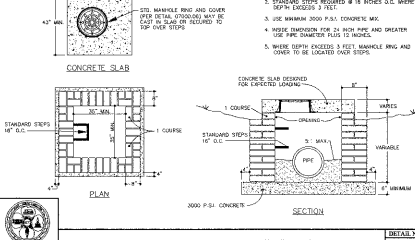
STANDARD PAVEMENT WIDENING TAPER & MARKINGS
DETAIL NO. 03000.15
SHEET 1 OF 1



NOTES:

- BARRICADE TO BE SET UP AT DEAD END OF ROAD.
- CONCRETE SHALL BE 3000 P.S.I.
- CONCRETE SHALL BE FINISHED WITH A BRUSHED SURFACE.

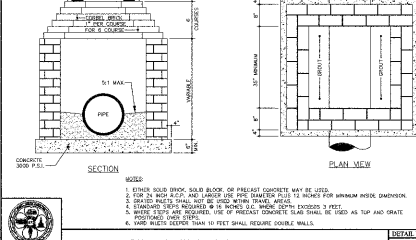
TEMPORARY BARRICADE FOR DEAD END ROADS
DETAIL NO. 03000.16
SHEET 1 OF 1



NOTES:

- CONCRETE SHALL BE 3000 P.S.I.
- CONCRETE SHALL BE FINISHED WITH A BRUSHED SURFACE.
- EXPANSION JOINTS SHALL BE LOCATED AT THE INTERSECTIONS OF DRIVEWAYS AND STREET INTERSECTIONS.

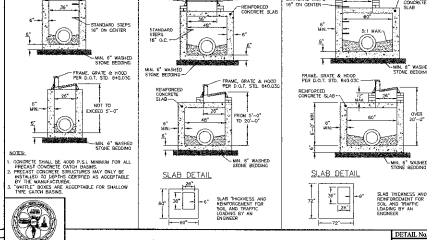
STANDARD YARD INLET WITH CONCRETE SLAB
DETAIL NO. 03000.01
SHEET 1 OF 1



NOTES:

- CONCRETE SHALL BE 3000 P.S.I.
- CONCRETE SHALL BE FINISHED WITH A BRUSHED SURFACE.
- EXPANSION JOINTS SHALL BE LOCATED AT THE INTERSECTIONS OF DRIVEWAYS AND STREET INTERSECTIONS.

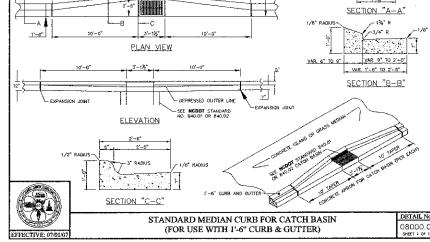
STANDARD YARD INLET WITH GRATE AND FRAME
DETAIL NO. 03000.02
SHEET 1 OF 1



NOTES:

- CONCRETE SHALL BE 3000 P.S.I.
- CONCRETE SHALL BE FINISHED WITH A BRUSHED SURFACE.
- EXPANSION JOINTS SHALL BE LOCATED AT THE INTERSECTIONS OF DRIVEWAYS AND STREET INTERSECTIONS.

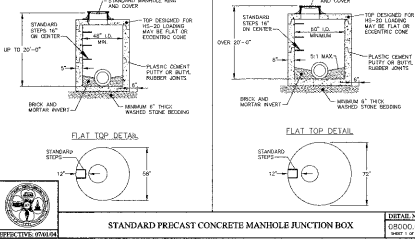
STANDARD PRECAST CONCRETE CATCH BASIN
DETAIL NO. 03000.03
SHEET 1 OF 1



NOTES:

- CONCRETE SHALL BE 3000 P.S.I.
- CONCRETE SHALL BE FINISHED WITH A BRUSHED SURFACE.
- EXPANSION JOINTS SHALL BE LOCATED AT THE INTERSECTIONS OF DRIVEWAYS AND STREET INTERSECTIONS.

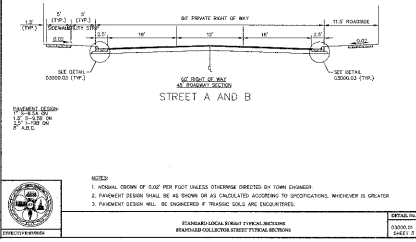
STANDARD MEDIAN CURB FOR CATCH BASIN
(FOR USE WITH 1'-6" CURB & GUTTER)
DETAIL NO. 03000.04
SHEET 1 OF 1



NOTES:

- CONCRETE SHALL BE 3000 P.S.I.
- CONCRETE SHALL BE FINISHED WITH A BRUSHED SURFACE.
- EXPANSION JOINTS SHALL BE LOCATED AT THE INTERSECTIONS OF DRIVEWAYS AND STREET INTERSECTIONS.

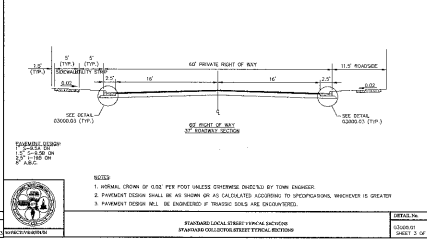
STANDARD PRECAST CONCRETE MANHOLE FUNCTION BOX
DETAIL NO. 03000.05
SHEET 1 OF 1



NOTES:

- CONCRETE SHALL BE 3000 P.S.I.
- CONCRETE SHALL BE FINISHED WITH A BRUSHED SURFACE.
- EXPANSION JOINTS SHALL BE LOCATED AT THE INTERSECTIONS OF DRIVEWAYS AND STREET INTERSECTIONS.

STREET A AND B
DETAIL NO. 03000.06
SHEET 1 OF 1



NOTES:

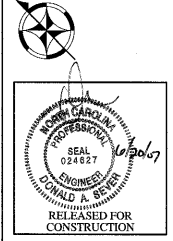
- CONCRETE SHALL BE 3000 P.S.I.
- CONCRETE SHALL BE FINISHED WITH A BRUSHED SURFACE.
- EXPANSION JOINTS SHALL BE LOCATED AT THE INTERSECTIONS OF DRIVEWAYS AND STREET INTERSECTIONS.

STANDARD LOCAL STREET TYPE SECTION
DETAIL NO. 03000.07
SHEET 1 OF 1

DE-SP-093
APPROVED
TOWN OF CARY

Approved by: *[Signature]* Date: 2-15-07
Engineering: *[Signature]* Date: 2-15-07

CHAS. H. SELLS, INC.
Civil Engineering, Surveying and Planning
15401 Wexford Parkway
Cary, NC 27513
Tel: 919-678-0033
Fax: 919-678-0036
www.chasells.com



AMBERLY TOWN CENTER
Cary, NC

GS Carolina
4000 Westgate Blvd., Suite 270
Raleigh, NC 27607

REVISIONS	DATE	BY

PROJECT # 06-404 DATE: 06/007
DRAWN BY: MB CHECKED BY: DS
TITLE
SITE DETAILS
C9.1